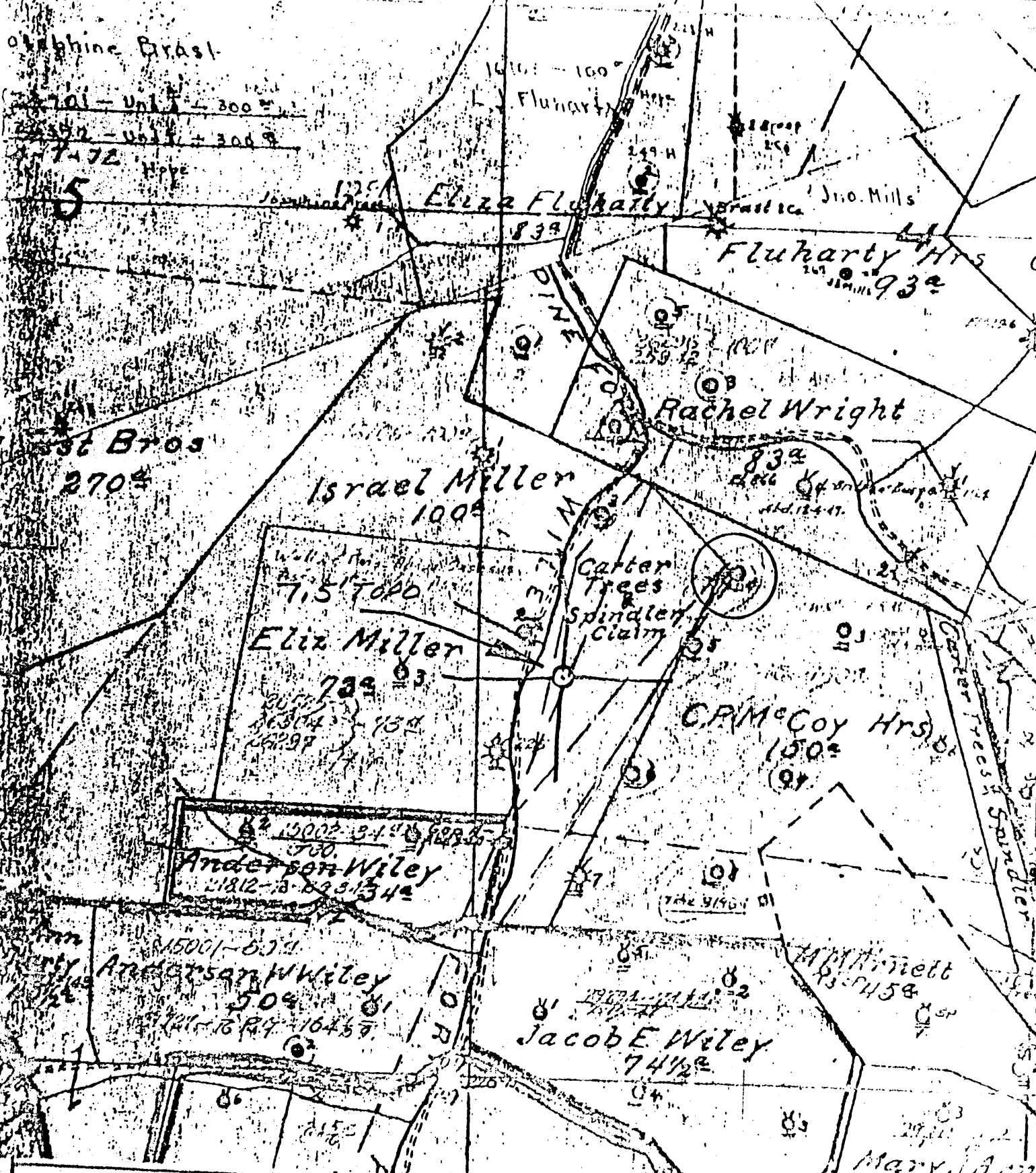


Graphine Brass

701 - Unit 1 - 300
702 - Unit 2 - 300
703 - Unit 3 - 300
704 - Unit 4 - 300
705 - Unit 5 - 300



(+) DENOTES LOCATION OF WELL ON UNITED STATES TOPOGRAPHIC MAPS

FORM IV-6
(8-78)



DATE 1-4-1977
 OPERATOR'S WELL NO. 4
 API WELL NO. 47-103-0900
 STATE COUNTY PERMIT

N57 N5W4

STATE OF WEST VIRGINIA
 DEPARTMENT OF MINES
 OIL AND GAS DIVISION

WELL TYPE: OIL GAS _____ LIQUID INJECTION _____ WASTE DISPOSAL _____
 (IF "GAS", PRODUCTION _____ STORAGE _____ DEEP _____ SHALLOW
 LOCATION: ELEVATION 1102.49 WATER SHED PINEY FORK
 DISTRICT GREENE COUNTY WETZEL
 QUADRANGLE PINE GRAVE 7.5'

SURFACE OWNER _____ ACREAGE _____
 OIL & GAS ROYALTY OWNER _____ LEASE NO. _____ LEASE ACREAGE _____

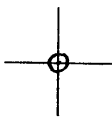
PROPOSED WORK: DRILL _____ CONVERT _____ DRILL DEEPER _____ REDRILL _____ FRACTURE OR
 STIMULATE _____ PLUS OFF OLD FORMATION _____ PERFORATE NEW
 FORMATION _____ OTHER PHYSICAL CHANGE IN WELL (SPECIFY) _____

PLUS AND ABANDON _____ CLEAN OUT AND REPLUS _____
 TARGET FORMATION _____ ESTIMATED DEPTH _____
 WELL OPERATOR Pennzoil Company DESIGNATED AGENT _____
 ADDRESS P. O. Box 1588 ADDRESS P. O. Box 1588
Parkersburg, WV 26101 Parkersburg, WV

McCoy Hrs 4

LATITUDE 39° 32' 30"

00° 04' 08" LONGITUDE



7'5 OGIS topo location

7.5' 10C 1.96 S 15' 10C _____
' 1.38 W (calc.) _____

Company _____

Farm _____

Quad PINE GROVE 7 1/2'

County WETZEL

District GREEN

WELL LOCATION MAP

File No. 103 - 0900

(095)

No. 1

SOUTH PENN OIL COMPANY—COMPLETION

SERIAL NO. _____ FARM McCoy Heirs. WELL NO. 4.
 ELEVATION 1102 N. 5. S. _____ E. _____ W. 1.
 LEASE NO. _____ ACRES 150.
 WATERS OF PINEY,
 DISTRICT Greene, COUNTY Wetzel, STATE W. Va.
 DRILLING COMMENCED 1/19-1898 COMPLETED 4/3-1898 DEPTH 2940'

SANDS	TOP	BOTTOM	ELEV. TOP	CASING
PGM. COAL OR SHALE	845'			
Big Injun Sand.	2170'	2320'	10"	853'
Stray Sand.	2895'		8 1/2"	1413'
Gordon Sand.	2926'	2935'	6-5/8"	2348'

PACKERS AND DEPTH SET

INITIAL PROD. 200 Bbls. SAND Gordon. DEPTH 2095'

GAS TEST
 SHOT 6/8-1901 QUARTS 60. -- 6/8-1903 -- 90 qts.
 REMARKS 6/3-1909-- 90 qts.

REPORTED BY Piney District. ABANDONED _____

103-900

70154 →
900

Green District, Wetzel County, W. Va.
By South Penn Oil Co.
Piney Fork.
Completed in 1896.

	Top.	Bottom.
Pittsburgh Coal	845	
Big Injun Sand	2170	2320
Stray Sand (gas, 2905')	2895	
Gordon Sand (oil, 2928')	2926	2935
Total depth		2940