



West Virginia Department of Environmental Protection
Office of Oil and Gas
WELL LOCATION FORM: GPS

API: 47-103-00790 P WELL NO.: WV 655551 (Lough #1302)

FARM NAME: Lough

RESPONSIBLE PARTY NAME: EQT Production Company

COUNTY: Wetzel DISTRICT: Clay

QUADRANGLE: Hundred 7.5'

SURFACE OWNER: Don J. Greathouse

ROYALTY OWNER: G.S. Lough et. al.

UTM GPS NORTHING: 4395104

UTM GPS EASTING: 543449 GPS ELEVATION: 354 m (1161 ft)

The Responsible Party named above has chosen to submit GPS coordinates in lieu of preparing a new well location plat for a plugging permit or assigned API number on the above well. The Office of Oil and Gas will not accept GPS coordinates that do not meet the following requirements:

1. Datum: NAD 1983, Zone: 17 North, Coordinate Units: meters, Altitude: height above mean sea level (MSL) – meters.

2. Accuracy to Datum – 3.05 meters

3. Data Collection Method:

Survey grade GPS : Post Processed Differential
Real-Time Differential

Mapping Grade GPS : Post Processed Differential
Real-Time Differential

4. Letter size copy of the topography map showing the well location.

I the undersigned, hereby certify this data is correct to the best of my knowledge and belief and shows all the information required by law and the regulations issued and prescribed by the Office of Oil and Gas.

Ben R. Sengler
Signature

P.S. 2092
Title

11-15-2011
Date

RECEIVED
Office of Oil & Gas

DEC 26 2011

WV Department of
Environmental Protection

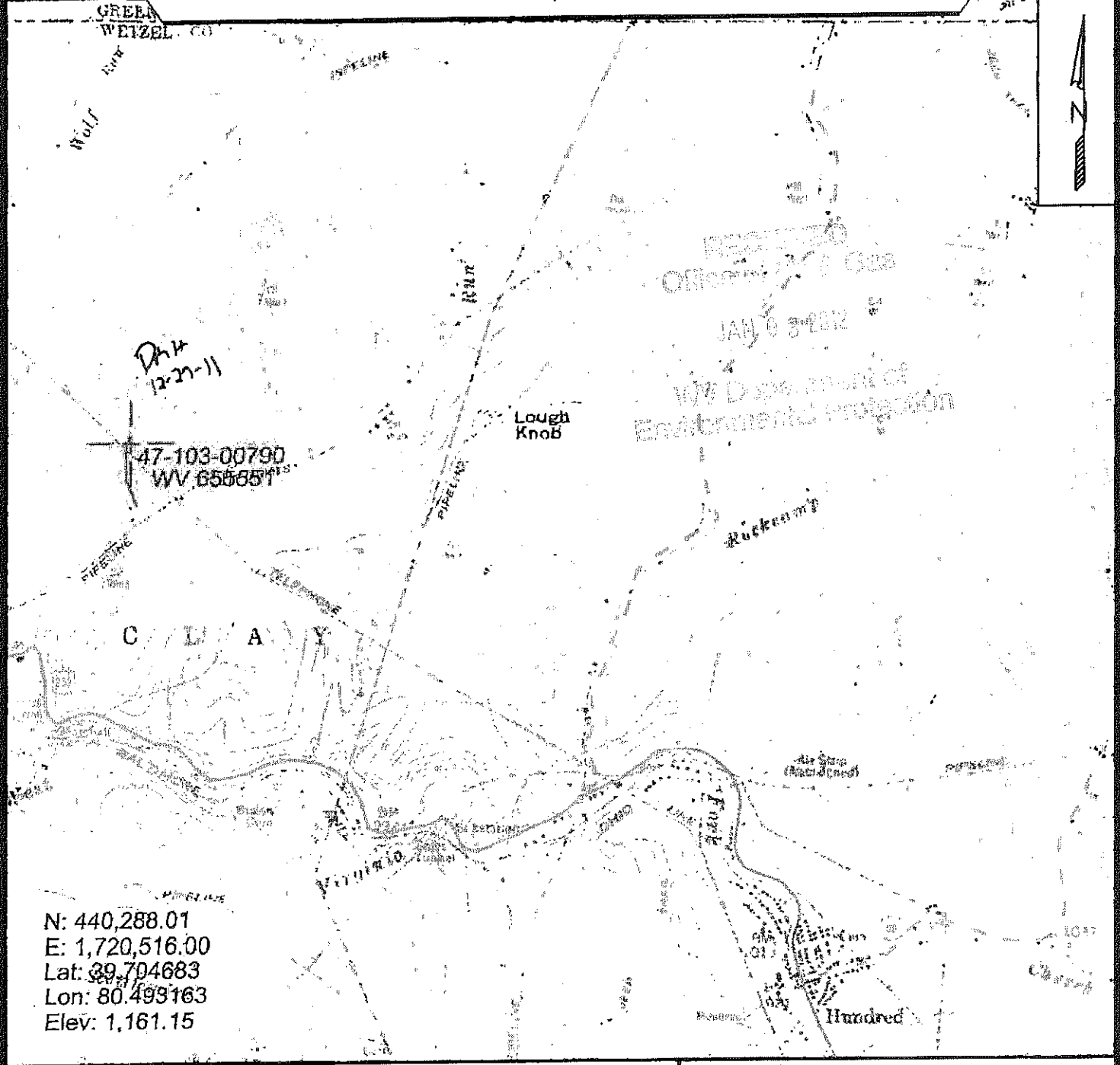
103.00790 P

Topo Quad: Hundred
County: Wetzel
District: Clay

Scale: 1" = 2000'
Date: October 26, 2011
Project No: 40-34-00-09

47-103-00790 (WV 655551)

Topo



N: 440,288.01
 E: 1,720,516.00
 Lat: 39.704683
 Lon: 80.493163
 Elev: 1,161.15



SURVEYING AND MAPPING SERVICES PERFORMED BY:
ALLEGHENY SURVEYS, INC.
 1-800-482-8606
 P.O. BOX 438
 BIRCH RIVER, WV 26610
 PH: (304) 649-8606
 FAX: (304) 649-8608

PREPARED FOR:
EQT Production Company
 1710 Pennsylvania Ave.
 Charleston, WV 25302