

A-3

LOCATION FOR WELL No. 457

Littleton DISTRICT

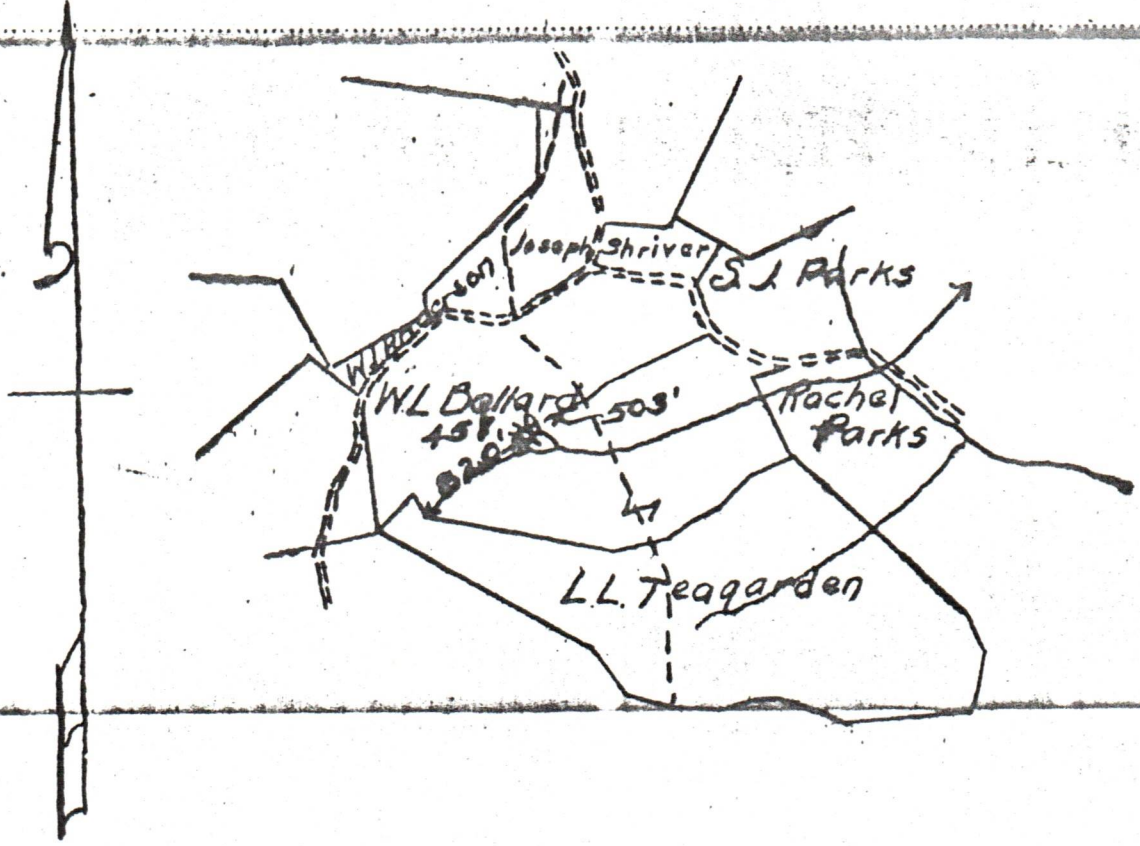
On M. Ballard Farm, on waters of Teagarden Fork

Center District, Wetzel County, West Virginia

Lease No. 3248 Acres 47 N. 12 S. E. 6 W.

Scale, one inch equals 80 Poles Sent to 1

Location to be



MEAS.
 LOCATION ~~MASS 4-24-1911~~
 F. A. Guy
 As per plat. Except as noted
 On Field Map 19
 Returned to Pittsburgh 19

PERMIT no. 103-0754

RESERVE

SPECIAL INSTRUCTIONS

09/15/2023

Location Meas 4-24-11 by F. A. Guy As per plat, except as noted. On field map

Returned to Pittsburgh

Location changed on account of

Authorized by Date Signed

WELL RECORD.

AWH

Malinda Bellard Farm *55* Acres
 Center District *Hetzl* County *W. Va* State

Well No. *457*
 Rig Commenced *July 24* 190*3*
 Rig Completed *July 31* 190*3* } *A.R. Davis* Contractor.
 Drilling Commenced *Aug. 8* 190*3*
 Drilling Completed *Oct. 2* 190*3* } *Schaffner Bros* Contractor.

ROCK FORMATION.	TOP.	BOTTOM.	REMARKS.
Conductor	16		
Pittsburg Coal	1075	1081	
Big Sand	1520	1555	Steel L.
Gas Sand	1600		1817
Salt "	1770	1870	2340
Maple "	2260		2358
Little Lime	2280		
Big Iron	2358		
Gas	2440		
Total Depth	2448		

Gas Time 48 Das

CASING RECORD.

Size	Charged to Well.		Put in Well.		Pulled Out.		Left in Well.		Transferred Before Completion.		Left at Well, Not in Use.	
	Feet	In	Feet	In	Feet	In	Feet	In	Feet	In	Feet	In
13"	279		177				177				102	
10"	1607	5	1382	1			1382	1			225	4
8"	2068	10	1824	2			1824	2			244	8
6 3/8"	2559	10	2356	8			2356	8			203	2

Production First 24 hours } Bbls. _____ Approved by _____ 09/15/2023
 Supt. _____

PROOF.—Sum of Three right hand columns equals First or "Charged to Well."
 Use as many sheets as necessary to make a complete record.
 In making out this record please use copying ink or an indelible pencil.

Permit no. - 103-0754