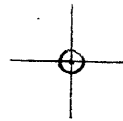


LATITUDE 39° 30' 00"

90° 32' 30"

LONGITUDE



7'5 OGIS topo location

7.5' loc 2.275 15' loc _____
 0.91w (calc.) _____

Company _____

Farm _____

Quad Folsom 7 1/2'

County WETZEL

District GRANT

WELL LOCATION MAP

File No. 103 -0742

Latitude

Longitude

2.26 s
.88 w

Topo Location

7.5' Loc. _____ 15' Loc. _____
(calc.) _____

#207 MTW Co Rept 1909

Company Wheeling

Farm H L Smith #1

15' Quad _____
(sec.)

7.5' Quad Folsom

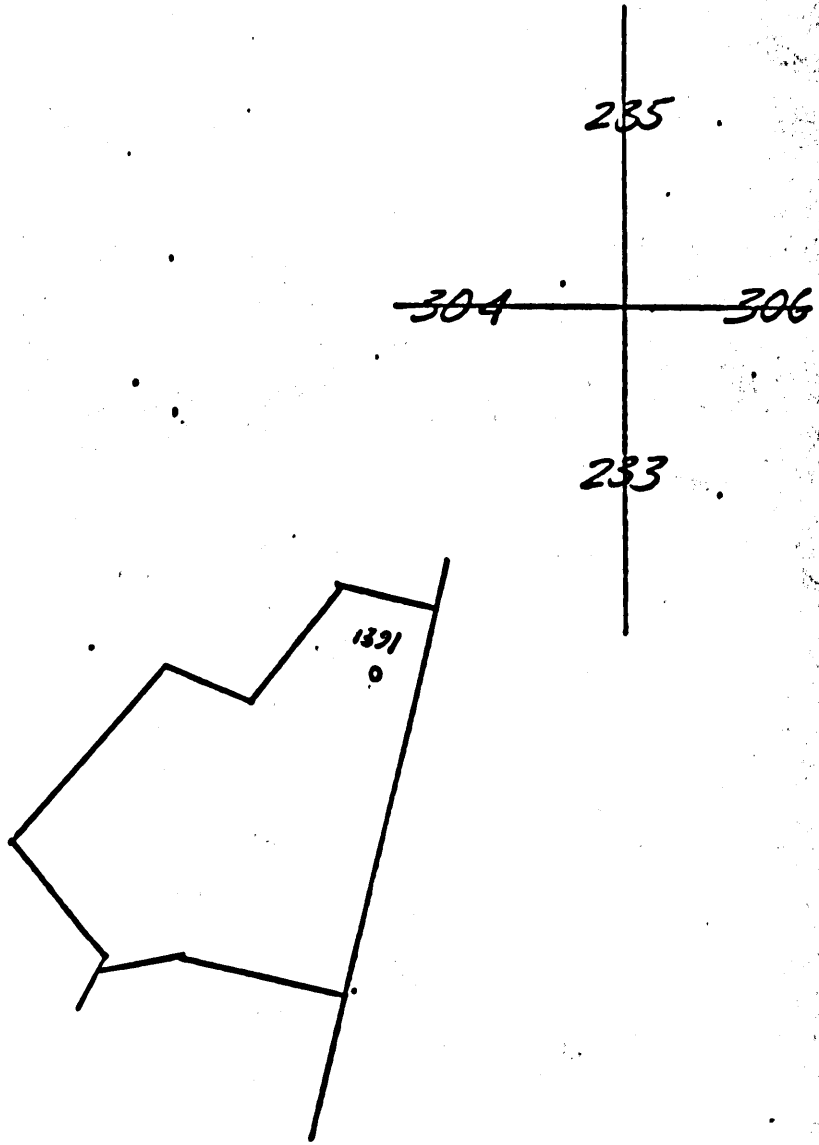
District Grant

WELL LOCATION PLAT

County 103 Permit 70470

Now
742

COMPANY **COLUMBIA GAS TRANSMISSION CORPORATION** MAP NO. Folsom
FARM Mary L.S. Cooke WELL NO. 601391
DISTRICT Grant COUNTY Wetzel STATE WV
SCALE 1" = 1320' LONG. 80°33'29" LAT. 39°28'02"



WET-742

The Manufacturers Light & Heat Co.

Division **W. Va.** **TRIAL GAS** 2000 Bank Building, Pittsburgh, Penna.
 Record of Well No. **1391** on **H. L. Smith** Farm **Acres**
SEDALIA Field **Gran** District **H. L. Smith** County **W. Va.** State **W. Va.**
 Rig commenced **JUN 11 1905** 1905, Completed **JUN 19 1905**
 Drilling commenced **June 24** 1905, Completed **Aug 21** 1905
 Cost per foot **\$1.35** Contractor **Thos Alexander** Address **H. W. Alexander**
 Drillers' names **John W Alexander**

BOILER			ENGINE			RIG			
No.	Name of Maker	U. S. No.	No.	Name of Maker	U. S. No.	Year	Old	Height	Name of Builder
						<i>New</i>		<i>8 1/2</i>	<i>J. M. Ferris</i>

14 inch	10 inch	8 1/2 inch	6 3/4 inch	6 inch	5 1/2 inch	5 inch	4 inch
<i>14</i>	<i>240</i>	<i>1240</i>	<i>2045.5</i>				

14 inch	10 inch	8 1/2 inch	6 3/4 inch	6 inch	5 1/2 inch	5 inch	4 inch
<i>14</i>			<i>2045.5</i>				<i>2885</i>

When Shot	Size of Torpedo	1st Day's Production	Tubing	Rods	Tanks	Size of Packer	Depth Set	Packed With	1st Month's Production	Rock Pressure
						<i>4x6 1/8</i>	<i>2797</i>	<i>4"</i>	<i>150</i>	<i>305</i>

FORMATION	FORMATION			REMARKS
	Top	Bottom	Thickness	
<i>Pittsburg Coal</i>	<i>760</i>	<i>771</i>	<i>11</i>	
<i>Little Bunkard</i>	<i>775</i>	<i>1000</i>	<i>225</i>	
<i>Big "</i>	<i>1240</i>	<i>1260</i>	<i>20</i>	
<i>Harry up Sand</i>	<i>1360</i>	<i>1430</i>	<i>70</i>	
<i>Gas Sand</i>	<i>1500</i>	<i>1660</i>	<i>160</i>	
<i>Gate "</i>	<i>1620</i>	<i>1750</i>	<i>130</i>	
<i>Little Lime</i>	<i>1955</i>	<i>2000</i>	<i>45</i>	
<i>Pencil lean</i>	<i>2000</i>	<i>2005</i>	<i>5</i>	
<i>Big Lime</i>	<i>2005</i>	<i>2065</i>	<i>60</i>	
<i>Big Lamin</i>	<i>2065</i>	<i>2245</i>	<i>180</i>	<i>Gas in Sand at 2155</i>
<i>Sand & Shells</i>	<i>2530</i>	<i>2670</i>	<i>140</i>	
<i>30 foot</i>	<i>2785</i>	<i>2815</i>	<i>30</i>	
<i>Shay</i>	<i>2833</i>	<i>2845</i>	<i>12</i>	
<i>Gordin</i>	<i>2851</i>	<i>2863</i>	<i>12</i>	<i>Gas from 2851 to 2843</i>
<i>Total Depth</i>		<i>2882</i>		

WET-742

Examined above information and measurements and found to be correct by *Thos Alexander* Contractor.
 Examined and approved by *H. L. Snyder* Superintendent of Co.
 NOTE - The above blank must be filled out carefully by the Contractor, with a complete and accurate record of the Well, and company, when presented for payment.
 All formations and known sands must be given by their proper name, with steel line measurements, and under the head of "Remarks" must be recorded in what sand and at what depth in the line or water was found, the quantity of the sand, and thickness of pay.
 Make no memoranda of boiler and engine if owned by Contractor.

0002 0692