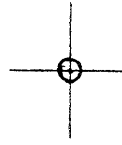


LATITUDE 39° 40' 00"



LONGITUDE 80° 27' 30"

7'5 OGIS topo location

7.5' loc 107S 15' loc \_\_\_\_\_  
                  1.17W (calc.) \_\_\_\_\_

Company \_\_\_\_\_

Farm \_\_\_\_\_

Quad HUNDRED 7 1/2'

County WETZEL

District CHURCH

WELL LOCATION MAP

File No. 103-0740

(048)

*The Pennsylvania Light & Heat Co.*

LOCATION FOR WELL No. 2425 GAS

Lease No. 1390 for 52 Acres Hundred District

DESCRIPTION

Well No. 1 on farm of Sallie & S.C. Ashcraft  
District Church County Wetzel State W.Va.  
500 feet from West line of Geo. W. Thomas Farm  
603 feet from North line of Eliza E. Oliver Farm  
feet from \_\_\_\_\_ line of \_\_\_\_\_ Farm  
feet \_\_\_\_\_ of well on \_\_\_\_\_ Farm

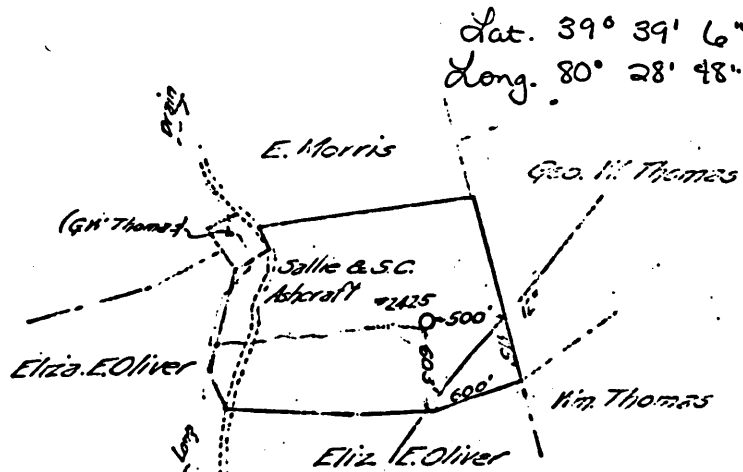
As shown on Sketch below. Scale of sketch; 1" equals 800 feet

Location made April 10, 1919 Signed H.E. Sawyer, Field

Reservation around Buildings 300 Feet. Adam Hostuttler, Asst

SPECIAL CONDITIONS:-

*Lease expires Aug. 4, 1919  
Fischer Oil Co owns oil. spec. Agr. #309*



WET-740

E.G. Burson Dis't. Supt. Pittsburgh, Pa., April 11, 1919  
Hundred, W.Va.

You are hereby authorized to commence work on above well at once, as well must be commenced by at once 1919, and must be completed by August 4 1919

All charges for labor and material incident to above well must be charged to this Well No. 2425, and when work is completed report must be filled <sup>PPH</sup> on reverse side of this sheet and forwarded to Pittsburgh Office. Retain one copy of this order for your files.

APPROVED JOHN FOLEY H.A. Quay  
Genl. Manager

0002 0657

Manufacturers Light & Heat Company

245 Fourth Ave., Pittsburgh, Pa.

Division \_\_\_\_\_  
 Record of Well No. **8428** on **Salley & G. Ashcraft,** Farm **53** Area \_\_\_\_\_  
 Hundred **Field** Church Station **Wetzel** County **W. Va.** State \_\_\_\_\_  
 Rig Commenced **May 24** 191**9**, Completed **June** \_\_\_\_\_  
 Drilling Commenced **July 21** 191**9**, Completed **AUG 25** 191**9**  
 Cost per foot \_\_\_\_\_ Contractor **T.B. Foley** Address **Pittsburgh Pa.**  
 Driller's Names **Wade Renner & Howard Cross**

| BOILER |     |               | ENGINE |     |               | RIG |     |        |                 |
|--------|-----|---------------|--------|-----|---------------|-----|-----|--------|-----------------|
| H. P.  | No. | Name of Maker | H. P.  | No. | Name of Maker | New | Old | Height | Name of Builder |
|        |     |               |        |     |               |     |     |        |                 |

| CONDUCTOR AND CASING USED IN DRILLING |         |         |         |         |         |         |         |         |           |
|---------------------------------------|---------|---------|---------|---------|---------|---------|---------|---------|-----------|
| Diameter                              | 12 inch | 16 inch | 20 inch | 24 inch | 30 inch | 36 inch | 42 inch | 48 inch | 60 inch   |
| 16                                    |         | 242     | 1852'   |         |         |         |         |         | 1595' 11" |

| CONDUCTOR AND CASING LEFT IN WELL |         |         |           |         |         |         |         |         |           |
|-----------------------------------|---------|---------|-----------|---------|---------|---------|---------|---------|-----------|
| Diameter                          | 12 inch | 16 inch | 20 inch   | 24 inch | 30 inch | 36 inch | 42 inch | 48 inch | 60 inch   |
| 16                                |         | 242     | 1852' 11" |         |         |         |         |         | 1595' 11" |

| OIL WELL |                 |                      |        |      |       |                |           |             |                     |                   |
|----------|-----------------|----------------------|--------|------|-------|----------------|-----------|-------------|---------------------|-------------------|
| When Set | Size of Torpedo | 1st Day's Production | Tubing | Rods | Teaks | Size of Packer | Depth Set | Packed with | 1st Minute Pressure | 1st Hour Pressure |
|          |                 |                      | 4"     |      |       | 3 1/4" X 4"    | 4"        |             | 25"                 | 250               |

| FORMATION                        | REMARKS |        |           |
|----------------------------------|---------|--------|-----------|
|                                  | Top     | Bottom | Thickness |
| Flats <i>dark soft</i>           | 50      | 200    | 150       |
| Coal                             | 450     | 454    | 4         |
| Bluff Sand <i>light hard</i>     | 500     | 600    | 20        |
| Maple town Coal <i>soft</i>      | 747     | 746    | 4         |
| Pittsburgh <i>hard</i>           | 838     | 847    | 9         |
| Murphy Sand <i>white hard</i>    | 974     | 1028   | 51        |
| Red rock <i>red soft</i>         | 1035    | 1047   | 7         |
| " " <i>red soft</i>              | 1077    | 1085   | 13        |
| " " <i>red soft</i>              | 1100    | 1115   | 15        |
| Little Dunward <i>light hard</i> | 1190    | 1265   | 15        |
| Big " <i>light hard</i>          | 1312    | 1378   | 53        |
| First Salt Sand <i>hard</i>      | 1475    | 1550   | 75        |
| second " <i>hard</i>             | 1578    | 1591   | 13        |
| Total Depth                      | 1591    |        |           |

Water at 537 six Barrels Per Hr.

Gas at 1585 to 1590  
 test 50/10 Water in 3"  
 tubed with 4" tubing 1595' 11"  
 packed with Oil Well Supply  
 anchor Packer, Packer set 1532' 7"  
 3 joints of anchor under Packer  
 63' 4"  
 1 min 2min 3min 4min 5min 15min  
 25- 50- 72- 95- 110- 250\*

APPROVED  
 JOHN FOLEY  
 General Partner

WET-740

Examined above information and measurements found to be correct by \_\_\_\_\_ Contractor.  
 Examined and approved by W. J. Burdick Superintendent of Co.  
 NOTE: The above blank must be filled out carefully by the Contractor, with a complete and accurate record of the well, and accompany, when presented for payment the bill for drilling.  
 All formations and layers made must be given by their proper name, with steel line measurements, and under the head of "Remarks" must be recorded in what sand and at what depth Oil, Gas or Water was found, the quantity of same, the quality of the sand, and thickness of strata.  
 Make no measurements of boiler and engine if owned by contractor.

0002 0660



**The Manufacturers Light & Heat Company** R130  
 Division Hundred 248 Fourth Ave., Pittsburgh, Pa.  
 Record of Well No. 8425 on S. & S. C. Ashcraft Farm 52 Acres  
 Hundred Field Church District Wetzel County W. Va. State  
 Rig Commenced June 25th 1926. Completed July 2nd 1926.  
 Drilling Commenced July 26th 1926. Completed August 24th 1926  
 Cost per Foot \$2.25 Contractor F. G. Burson (Mrs. I. & H. C. address Hundred, W. Va.)  
 Drillers' Names W. C. Lemley. B. Keffer

| BOILER |     |               | ENGINE |     |               | RIG |     |        |                 |
|--------|-----|---------------|--------|-----|---------------|-----|-----|--------|-----------------|
| H. P.  | No. | Name of Maker | H. P.  | No. | Name of Maker | Now | Old | Height | Name of Builder |
|        |     |               |        |     |               |     |     |        |                 |

| CONDUCTOR AND CASING USED IN DRILLING |            |            |            |            |          |          |          |          |          |
|---------------------------------------|------------|------------|------------|------------|----------|----------|----------|----------|----------|
| Conductor                             | 2 1/2 inch | 1 1/2 inch | 1 1/4 inch | 1 1/8 inch | 3/4 inch | 5/8 inch | 3/4 inch | 5/8 inch | 3/4 inch |
| Old                                   |            | Old        | Old        | 2059' 2"   |          |          |          |          |          |

| CONDUCTOR AND CASING LEFT IN WELL |            |            |            |            |          |          |          |          |          |
|-----------------------------------|------------|------------|------------|------------|----------|----------|----------|----------|----------|
| Conductor                         | 2 1/2 inch | 1 1/2 inch | 1 1/4 inch | 1 1/8 inch | 3/4 inch | 5/8 inch | 3/4 inch | 5/8 inch | 3/4 inch |
| Old                               |            | Old        | Old        | 2059' 2"   |          |          |          |          |          |

| When Shut        | Size of Turbine | 1st Day's Production | OIL WELL                            |        |           | GAS WELL       |                               |             |                     |                      |
|------------------|-----------------|----------------------|-------------------------------------|--------|-----------|----------------|-------------------------------|-------------|---------------------|----------------------|
|                  |                 |                      | Tapping                             | Hoops  | Tanks     | Size of Tanker | Depth Met                     | Packed with | 1st Minute Pressure | 10th Minute Pressure |
| Aug. 27          | 30 Qts          |                      | Top                                 | Bottom | Thickness | REMARKS        |                               |             |                     |                      |
| Drilling Deeper. |                 |                      |                                     |        |           |                |                               |             |                     |                      |
|                  |                 |                      | Pittsburgh, Coal.                   | 838    | 847       | 9              |                               |             |                     |                      |
|                  |                 |                      | 2nd Salt Sand <i>light hard</i>     | 1578   | 1670      | 92             | Show of gas at 1585 1591      |             |                     |                      |
|                  |                 |                      | 3rd Salt Sand <i>light hard</i>     | 1695   | 1720      | 25             | Water at 1645.5 bails per Hr. |             |                     |                      |
|                  |                 |                      | Red Rock <i>red soft</i>            | 1930   | 1945      | 15             |                               |             |                     |                      |
|                  |                 |                      | Little Lime <i>white sand</i>       | 1986   | 2002      | 16             |                               |             |                     |                      |
|                  |                 |                      | Pencil Cave <i>dark soft</i>        | 2002   | 2010      | 8              |                               |             |                     |                      |
|                  |                 |                      | Big Lime <i>light sand</i>          | 2015   | 2085      | 70             |                               |             |                     |                      |
|                  |                 |                      | Big Injun Sand <i>light sand</i>    | 2085   | 2325      | 240            | Show of gas at 2092 to 2099   |             |                     |                      |
|                  |                 |                      | Gordon Stray Sand <i>light sand</i> | 2920   | 2941      | 31             | " " " " 2136 " 2141.2145.     |             |                     |                      |
|                  |                 |                      | Gordon Sand <i>light sand</i>       | 2979   | 3010      | 31             | " " " " 2148                  |             |                     |                      |
|                  |                 |                      | 4th Sand <i>light sand</i>          | 3020   | 3030      | 10             | Oil at 3023 to 3025           |             |                     |                      |
|                  |                 |                      | 5th Sand <i>light sand</i>          | 3068   | 3078      | 10             | Gas test. 10/10 water in 2".  |             |                     |                      |
|                  |                 |                      | Total depth                         | 3088   |           |                |                               |             |                     |                      |
|                  |                 |                      | Slate <i>dark soft</i>              | 1670   | 1670      | 10             |                               |             |                     |                      |
|                  |                 |                      | Slate <i>dark soft</i>              | 1680   | 1680      | 10             |                               |             |                     |                      |
|                  |                 |                      | Slate <i>dark soft</i>              | 1720   | 1720      | 100            |                               |             |                     |                      |
|                  |                 |                      | Slate <i>dark soft</i>              | 1820   | 1860      | 40             |                               |             |                     |                      |
|                  |                 |                      | Slate <i>dark soft</i>              | 1865   | 1875      | 10             |                               |             |                     |                      |
|                  |                 |                      | Slate <i>dark soft</i>              | 1875   | 1930      | 55             |                               |             |                     |                      |
|                  |                 |                      | Slate <i>dark soft</i>              | 1945   | 1980      | 35             |                               |             |                     |                      |
|                  |                 |                      | Slate <i>dark soft</i>              | 1980   | 1986      | 6              |                               |             |                     |                      |
|                  |                 |                      | Slate & shells <i>dark</i>          | 2325   | 2410      | 85             |                               |             |                     |                      |
|                  |                 |                      | Slate <i>dark soft</i>              | 2441   | 2474      | 33             |                               |             |                     |                      |
|                  |                 |                      | Slate <i>dark soft</i>              | 3010   | 3020      | 10             |                               |             |                     |                      |
|                  |                 |                      | Slate <i>dark soft</i>              | 3030   | 3068      | 38             |                               |             |                     |                      |
|                  |                 |                      | Slate & Limestone                   | 3058   | 3068      | 10             |                               |             |                     |                      |
|                  |                 |                      | Slate <i>dark soft</i>              | 3078   | 3088      | 10             |                               |             |                     |                      |

*151000*  
*3088*  
*1591*  
*1497*

WET-740

APPROVED  
 JOHN FOLEY  
 GENERAL SUPV

Examined and approved by \_\_\_\_\_  
 Contractor \_\_\_\_\_  
 Superintendent of Co. \_\_\_\_\_  
 All dimensions and depths shall be given in feet and inches, and make the level of "marks" used be noted in what way and at what depth well, size of water was used, the quality of same, the quality of the sand, and thickness of pay.  
 Make no payments of labor and engine if caused by contractor.

0002 0662