

COMPANY **COLUMBIA GAS TRANSMISSION CORPORATION** MAP NO. *Hundred*

FARM *Madge D. Bradley*

WELL NO. *601135*

DISTRICT *Church*

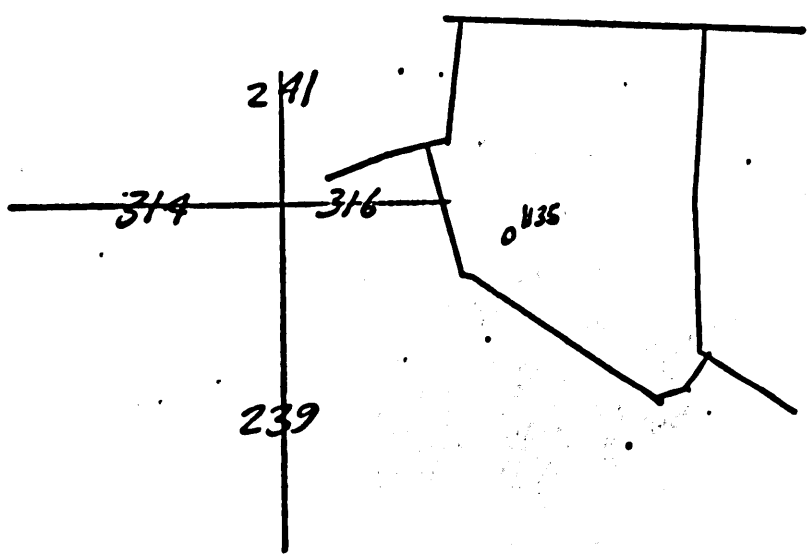
COUNTY *Wetzel*

STATE *WV*

SCALE: *1" = 1320'*

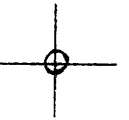
LONG. *80°25'08"*

LAT. *39°41'57"*



WET-734

LATITUDE 39° 42' 30"



LONGITUDE 80° 25' 00"

7'5 OGIS topo location

7.5' loc 0.76 S 15' loc _____
 0.19 W (calc.) _____

Company _____

Farm _____

Quad HUNDRED 7 1/2'

County WETZEL

District CHURCH

WELL LOCATION MAP

File No. 103 - 0734

(050)

The Manufacturers Light and Heat Co.

Farmers Bank Building, Pittsburgh, Penna.

Division *Whitney*
 Record of Well No. *1135* on *Rutcher Steins* Farm *W. Va.* State *W. Va.*
Hundred Field *Branch* Township *W. Va.* County *W. Va.* State *W. Va.*
 Rig commenced *June 5* 1905, Completed *June 12* 1905.
 Drilling commenced *June 27* 1905, Completed *Sept* 1905.
 Cost per foot *1.35* Contractor *E. J. Arins & Co.* Address *Hundred W. Va.*
 Drillers' names *E. J. Arins and C. E. Slaney*

BOILER			ENGINE			RIG		
H. P.	No.	Name of Maker	H. P.	No.	Name of Maker	New	Old	Name of Builder
						<i>New</i>		<i>82 Lums & Co.</i>

CONDUCTOR AND CASING USED IN DRILLING									
10 inch	8 inch	6 inch	4 inch	3 inch	2 inch	1 1/2 inch	1 inch	3/4 inch	5/8 inch
<i>10'</i>	<i>300'</i>	<i>1620'</i>	<i>2337'</i>						

CONDUCTOR AND CASING LEFT IN WELL									
10 inch	8 inch	6 inch	4 inch	3 inch	2 inch	1 1/2 inch	1 inch	3/4 inch	5/8 inch
<i>10'</i>		<i>1100'</i>	<i>2332'</i>					<i>4 inch</i>	<i>3330'</i>

When Set	Size of Torpedo	1st Day's Production	Tubing	Boots	Tanks	Size of Packer	Depth Set	Packed With	1st Minute's Pressure	Back Pressure
		<i>The well has made 3 barrels a day since tested.</i>				<i>5x4</i>	<i>3214 ft</i>	<i>4"</i>	<i>45"</i>	<i>To top of 6 1/2' Sink and 2' water</i>

FORMATION	Top		Thickness	REMARKS
	Bottom	Bottom		
<i>Lime sand & slate</i>	<i>10"</i>	<i>611</i>		
<i>native coal</i>	<i>611</i>	<i>614</i>	<i>3'</i>	<i>ordinary</i>
<i>Slate and lime</i>	<i>614</i>	<i>1020</i>		
<i>crisp iron coal</i>	<i>1020</i>	<i>1025</i>	<i>5'</i>	<i>good quality</i>
<i>iron</i>	<i>1025</i>	<i>1118</i>		
<i>fine coal</i>	<i>1118</i>	<i>1126</i>	<i>8'</i>	<i>very shiner coal</i>
<i>mostly cove rock</i>	<i>1126</i>	<i>1520</i>		
<i>bank and sands</i>	<i>1520</i>	<i>1600</i>	<i>80'</i>	
<i>white cove</i>	<i>1600</i>	<i>1620</i>	<i>20'</i>	
<i>Bus sand & slate</i>	<i>1620</i>	<i>1540</i>		
<i>1st salt sand</i>	<i>1840</i>	<i>1990</i>	<i>150'</i>	<i>dry</i>
<i>2nd " "</i>	<i>2065</i>	<i>2170</i>	<i>105'</i>	<i>"</i>
<i>Mar on sand</i>	<i>2235</i>	<i>2285</i>	<i>50'</i>	
<i>Mar on gas</i>		<i>2250</i>		<i>Enough to fire boiler</i>
<i>Big Lime</i>	<i>2285</i>	<i>2307</i>	<i>22'</i>	<i>no pencil cove</i>
<i>Big iron sand</i>	<i>2367</i>	<i>2580</i>	<i>213'</i>	<i>Smell gas at 2382'</i>
<i>Slate and gritty shells</i>	<i>2580</i>	<i>3167</i>	<i>557'</i>	
<i>Campbell's Run sand</i>	<i>3167</i>	<i>3207</i>	<i>40'</i>	<i>18" gas well at 3147 d. l.</i>
<i>Red Rock</i>	<i>3207</i>	<i>3216</i>	<i>9'</i>	
<i>String sand</i>	<i>3216</i>	<i>3228</i>	<i>12'</i>	<i>nothing</i>
<i>Dark slate</i>	<i>3228</i>	<i>3271</i>	<i>43'</i>	
<i>Govlon sand</i>	<i>3271</i>	<i>3302</i>	<i>31'</i>	<i>Still sand</i>
<i>Oil at</i>		<i>3300</i>		
<i>Final depth</i>		<i>3302</i>		

WET-734

Examined above information and measurements and found to be correct by *E. J. Arins & Co.* Contractor. Examined and approved by *H. L. Sample* Superintendent of *W. Va.*
 NOTE: The above blank must be filled out carefully by the Contractor with a complete and accurate record of the Well, and accompany when presented for payment, the bill for drilling.
 All formations and known sands must be given by their proper name, with steel line measurements, and under the head of "Remarks" must be recorded in what sand and at what depth Oil, Gas or Water was found, the quantity of same, the quality of the sand, and thickness of pay.
 Make no memoranda of boiler and engine if owned by Contractor.

0002 0578