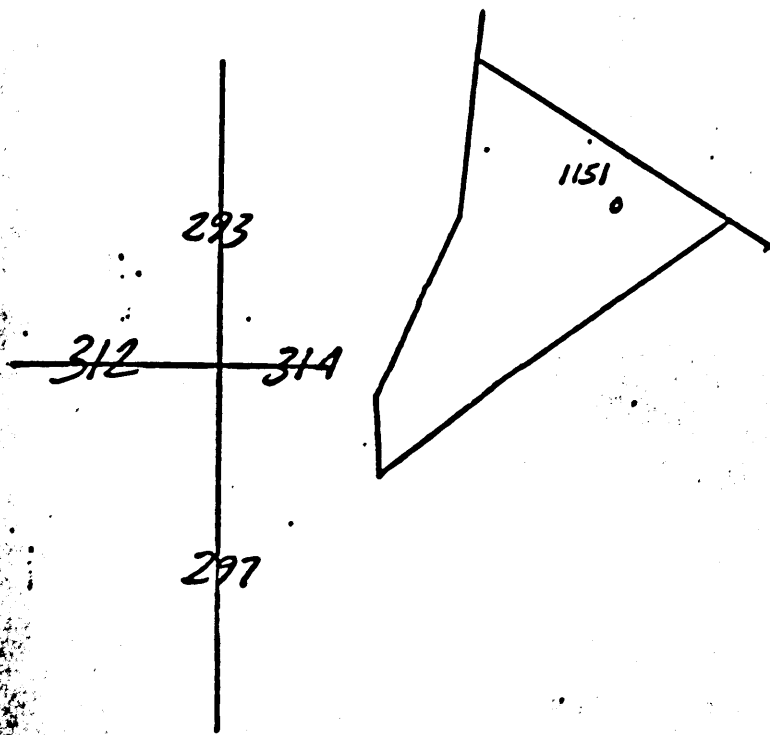




COMPANY COLUMBIA GAS TRANSMISSION CORPORATION MAP NO. Hundred  
FARM J P Giblin WELL NO. 601151  
DISTRICT Church COUNTY Wetzel STATE WV  
SCALE: 1" = 1320' LONG. 80° 26' 22" N LAT. 39° 40' 43" N



WET-730

**The Manufacturers Light & Heat Co.**  
Farmers Bank Building, Pittsburgh, Penna.

Record of Well No. **1151** on **Rebecca Lilly** Farm **98** Acres  
**Humboldt** Field **Church** **Wetzel** County **W. Va.** State  
 Rig commenced **191** Completed **191**  
 Drilling Commenced **191** Completed **Oct. 21 - 1913**  
 Cost per foot **1.65** Contractor **Thos. Almon & Son** Address **Baker Pa**  
 Drillers' names

BOILER			ENGINE			RIG		
S. N.	No.	Name of Maker	S. N.	No.	Name of Maker	No.	Size	Name of Builder

CONDUCTOR AND CASING USED IN DRILLING									
Size	Length	Weight	Size	Length	Weight	Size	Length	Weight	Remarks

CONDUCTOR AND CASING LEFT IN WELL									
Size	Length	Weight	Size	Length	Weight	Size	Length	Weight	Remarks

OIL WELL			GAS WELL			
Class	Size of Toprod	1st Day's Penetration	Top	Bottom	Thickness	Remarks
			2285	2545	260	
			2863	2998	35	
			3029	3068	40	
			3124	3148	24	
			3184	3194	10	
			3204	3228	24	
			3274	3288	14	
				3260		Log from logan. lower

WET-730

Examined and approved by **Thos. Almon & Son** Contractor  
 Examined and approved by **A. Snyder** Superintendent of Co.  
 NOTE - The above blank must be filled out carefully by the Contractor, with a complete and accurate record of the Well, and accompany, when presented for payment the bill for drilling.  
 All formations and known sands must be given by their proper name, with steel line measurements, and under the head of "Remarks" must be recorded in what sand and at what depth Oil, Gas or Water was found, the quantity of same, the quality of the sand, and thickness of pay.  
 Make no movements of boiler and engine if owned by Contractor.