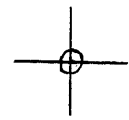


LATITUDE 39° 40' 00"

LONGITUDE 80° 32' 30"



7'5 OGIS topo location

7.5' loc 2.535 15' loc \_\_\_\_\_  
' 0.86w (calc.) \_\_\_\_\_

Company \_\_\_\_\_

Farm \_\_\_\_\_

Quad LITTLETON 7 1/2'

County WETZEL

District CENTER

WELL LOCATION MAP

File No. 103-0702

# HOPE NATURAL GAS COMPANY

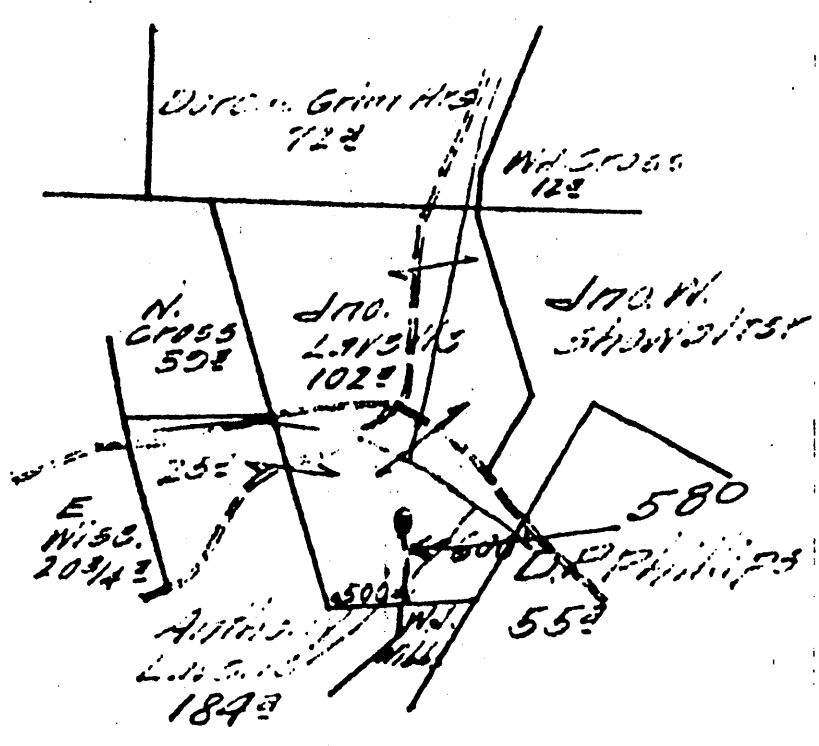
LOCATION FOR WELL No. **4719**

Instructions **14**

DISTRICT

In. *well* Farm, on waters of **Knob Fork** District, \_\_\_\_\_ County, West Virginia.

Lease No. **11362** Acres **20** N. **13** S. **4** E. **4** W.  
 Scale one inch equals **1/2 mi** Location made in Pittsburgh **22-1917** Sent to Clarksburg **July 22, 1917**  
 Location to be **600 ft. from top of ... at a point**  
*... ..*



# 103-0702

**32**

Well Book .....  
 Lease Book .....  
 Wall Map **11362** **1917** J.C.L.  
 Line Map **11362** **1917** J.C.L.  
 Sheets **MAK 3** **1917** J.C.L.

TITLE \_\_\_\_\_ RESERVE *... ..*

SPECIAL INSTRUCTIONS: COMPLETE WELL ON OR BEFORE \_\_\_\_\_

Same Lease on which Located Well No. \_\_\_\_\_

Location made **1-25-17** by **J. H. Cunningham** per plat, except as noted. On field map **1-29-17** Returned to Pittsburgh **1-29-17**  
 Location changed on account of **Rock ledge**  
 Authorized by **J. A. Blavin** Date **1-27-17** Signed **M. V. Bradley**

