

Hope Natural Gas Co.

LOCATION FOR WELL No. 818

Littleton DISTRICT

On D.L. Lusk Farm, on waters of

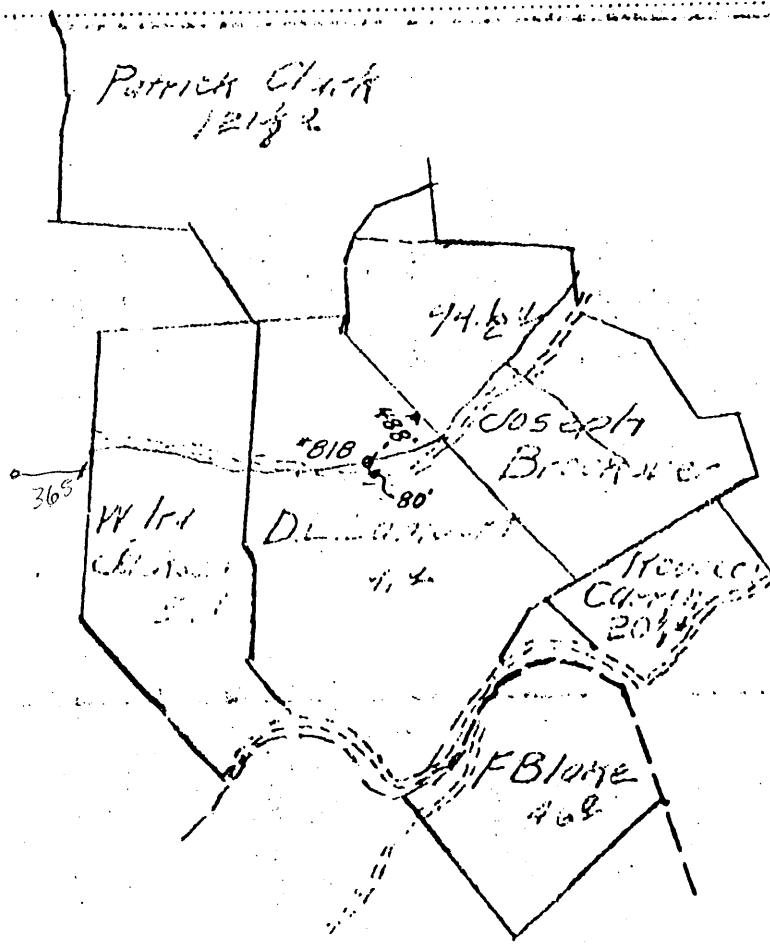
Center District, Wetzel County, West Virginia

Lease No 5273 Acres 150 N. 13 S. E. 3 W.

Scale, one inch equals 80 P.M. Sent to 1

Location to be

Bk 146 P. 12



ON SHB

WET-678

RESERVE

SPECIAL INSTRUCTIONS

Location made 5-12-14 by D.C. Straight As per plat, except as noted. On field

Returned to Pittsburgh

Location changed on account of

Authorized by Date 1 Signed

LATITUDE 39° 40' 00"

LONGITUDE 80° 32' 30"



7.5 OGIS topo location

7.5' loc 2.785
2.13W

15' loc _____
(calc.) _____

Company _____

Farm _____

Quad LITTLETON 7 1/2'

County WETZEL

District CENTER

WELL LOCATION MAP

File No. 103-0678

(040)

Hope Natural Gas Company

REPAIR RECORD

Well No. 818

Littleton

District

Farm Name J. Lambert

N 13 S E W 5

Repairs *Moving in - Oct. 12-45*
Commenced *January 10 1946*

Repairs Completed April 8th 1946

CASING AND TUBING RECORD

Size	Before Repairs	Pulled	Put in Well	After Repairs	Disposition of Amount Pulled
13	117'0"	None	None	117'0"	
6 5/8	1923'0"	None	None	1923'0"	
5 3/16	2450'0"	None	None	2450'0"	
3" TBG	2980'0"	2980'0"	3038'0"	3038'0"	3" Tubing

SHOOTING RECORD

Date	Quarts	Top of Shell	Bottom of Shell	Diameter	Sand	TEST BEFORE SHOT			TEST AFTER SHOT			Test Taken After Shot No. Hours	By Whom Shot
						Reading	Liquid	Opening	Reading	Liquid	Opening		
2/14/46	20	2927	2934	4 1/2	Gord	20/10 M	1"	34/10 M	1"	2 Hr	Marietta Torp Co		
OPEN SHOT						124,000		162,000					

RECORD OF ANY DEEPER DRILLING

Formation	Top	Bottom	Names of Drillers	Time (Days)
	2942		William E Kuhn	60
Commenced drilling at depth of			Homer P Stroanider	2
Drilled 54 feet Pocket only.			Names of Tool Dressers	Time (Days)
			Charles U Henderson	60
			John J Murphy	2
Tubed as follows:-				
First or bottom joint 22'10" is all perforated then two pcs (31'4"), then 1 full joint 22'7" all perforated, then two pieces (26'2"), then packer, then 3" tubing to top of well.				
			PACKER RECORD (ALSO NOTE BELOW IF ANY PACKERS ARE PULLED)	
			Size	Kind
			5 3/16 x 3	Disc Wall Packer
			Anchor	Amount Above Anchor
			100 ft.	2938'0"
OIL AND GAS DISCOVERIES IN DEEPER DRILLING				
Oil at			None	Fl. is
Gas at			None	Fl. is
Total Depth	2996 Steel Line			

VOLUME AND PRESSURE REPORT

BEFORE REPAIRS

Reading	Liquid	Opening	Rock or Minute Pressure	Sands Gas From
10/10	Mercury	3/4" Flow Meter	56 Lbs Rock	Gordon

AFTER REPAIRS

VOLUME TEST

Date of Test	Flow Meter or open Flow	Size of Opening	PITOT TUBE		OPEN FLOW Lbs.	Sands Gas From
			Reading	Liquid Used		
April 4 1946 Time Blown 4 hours	F.M.	1"	31/10	Mercury	154.400	Gordon

PRESSURE TEST

Date of Test	Opening	1 Min.	2 Min.	3 Min.	4 Min.	5 Min.	6 Min.	7 Min.	8 Min.	9 Min.	10 Min.	30 Min.	60 Min.	Hrs.
4/4/46	3" Tubing	8	16	19	23	24	26	28	30	31	32	38	41	16

OIL: From None Sand
Estimated Production None Bbl per Day None

Remarks: Old Gordon sand gas well, pulled tubing, cleaned out, shot, drilled pocket, re-run tubing, well is now in first class condition.

By *H. B. Byers* District Superintendent

Net-678

712 WELL RECORD.

Copy *150*
Jackson Lambert Farm *150* Acres
Centre District *Wetzel* County *W. Va.* State.

Well No. *1*
 Rig Commenced *Oct 17* 190 *5*
 Rig Completed *" 25* 190 *5* } *SOO Co. (Rice)* Contractor.
 Drilling Commenced *Dec 9* 190 *6*
 Drilling Completed *Feb 1* 190 *6* } *Cornahan Dig. Co.* Contractor.

ROCK FORMATION.	TOP.	BOTTOM.	REMARKS.
<i>Condit</i>		<i>16</i>	
<i>Coal Maple Iron</i>	<i>760</i>		
<i>" Pgh</i>	<i>855</i>		
<i>Funkh's Sand</i>	<i>1353</i>	<i>1393</i>	
<i>Salt</i>	<i>1640</i>	<i>1890</i>	
<i>Pencil Cove</i>	<i>2025</i>	<i>2035</i>	
<i>Big Lime</i>	<i>2035</i>	<i>2095</i>	
<i>" Indian</i>	<i>2095</i>	<i>2370</i>	
<i>Stray Sand</i>	<i>2880</i>	<i>2920</i>	<i>Steel Line</i>
<i>Gordon</i>	<i>2924</i>		
<i>Gas</i>	<i>2978</i>		
<i>Total Fifth</i>		<i>2942</i>	<i>" 1</i>

A217

ENTERED	
WELL BOOK	_____
LEASE RECORD	_____
LEASE DOCKET	_____
WALL MAP	<i>S.W.P.</i>
WORKING MAP	<i>S.W.P.</i>
COPY SENT	_____

CASING RECORD.

Size.	Charged to Well.		" Put in Well.		Pulled Out.		Left in Well.		Transferred Before Completion.		Left at Well, Not in Use.	
	Feet.	In.	Feet.	In.	Feet.	In.	Feet.	In.	Feet.	In.	Feet.	In.
<i>13</i>	<i>219</i>	<i>-</i>	<i>117</i>	<i>-</i>			<i>117</i>	<i>-</i>	<i>101</i>	<i>10</i>		
<i>10</i>	<i>1415</i>		<i>1180</i>		<i>1180</i>				<i>57</i>		<i>1358</i>	
<i>8 1/2</i>	<i>1964</i>	<i>9</i>	<i>1677</i>		<i>1677</i>				<i>287</i>	<i>8</i>	<i>1677</i>	
<i>6 5/8</i>	<i>2236</i>	<i>8</i>	<i>1923</i>	<i>8</i>			<i>1923</i>	<i>8</i>	<i>313</i>			
<i>5 3/16</i>	<i>2784</i>	<i>10</i>	<i>2450</i>				<i>2450</i>	<i>-</i>	<i>343</i>		<i>48</i>	<i>4</i>

Production } *Gas* - Bbls.
 First 24 Hours }

Approved by

J. P. King

Supt.

Proof. - Sum of Three right hand columns equals First or "Charged to Well"
 Use as many sheets as necessary to make a complete record.

Wet - 678