

LOCATION FOR WELL No. 457

Littleton DISTRICT

M. Ballard

Farm, on waters of Teagarden Fork

Center Church

District

Hetzell

County, West Virginia

Lot No. 224A

Acres 47

N. 12

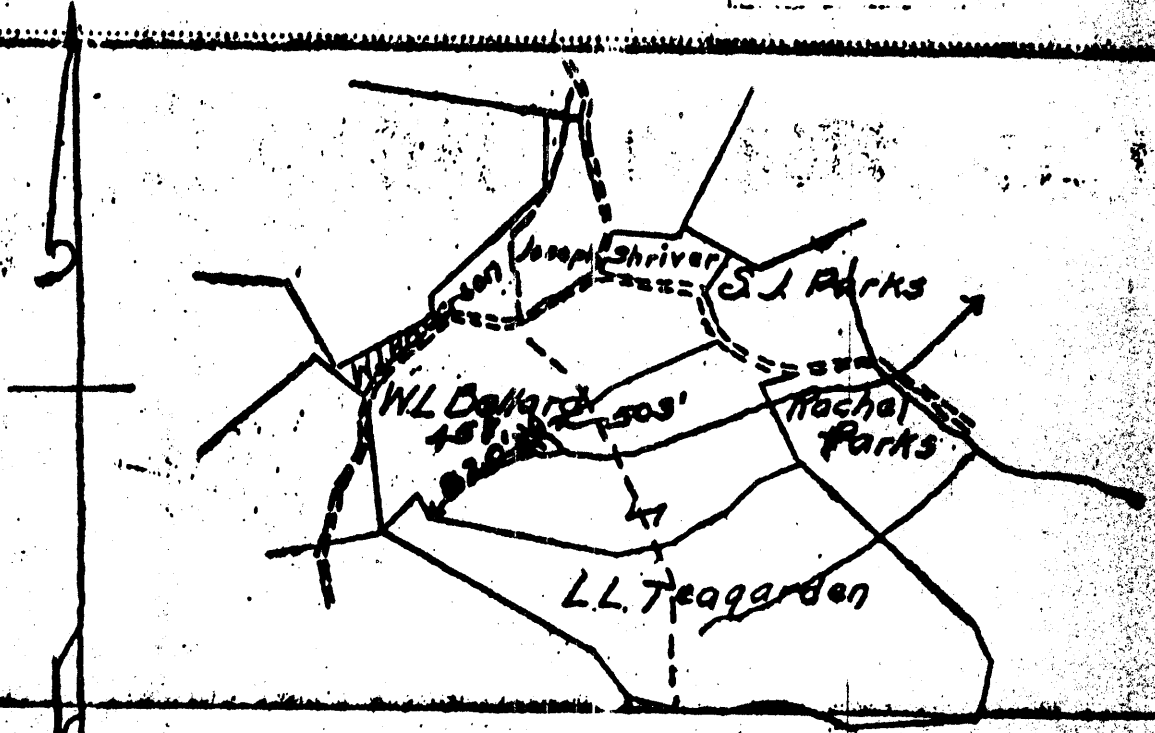
S.

E. 6

W.

Scale, one inch equals 80 Poles = 1320 ft. Sent to

Location to be



Big Run 7.5 min

39	37	30	.54 S
80	30		1.37 W

determined via property maps

103-664

MEAS.
 LOCATION MADE 4-24-1911
 by F. A. Guy
 As per plat. Except as noted
 On Field Map.....19
 Returned to Pittsburgh.....19

PERMIT NO. 403-096

RESERVE

SPECIAL INSTRUCTIONS

Location made 4-24-11 by F. A. Guy As per plat, except as noted. On field map

Returned to Pittsburgh

Location changed on account of

Authorized by Date Signed

LOCATION FOR WELL No. 457

Littleton

DISTRICT

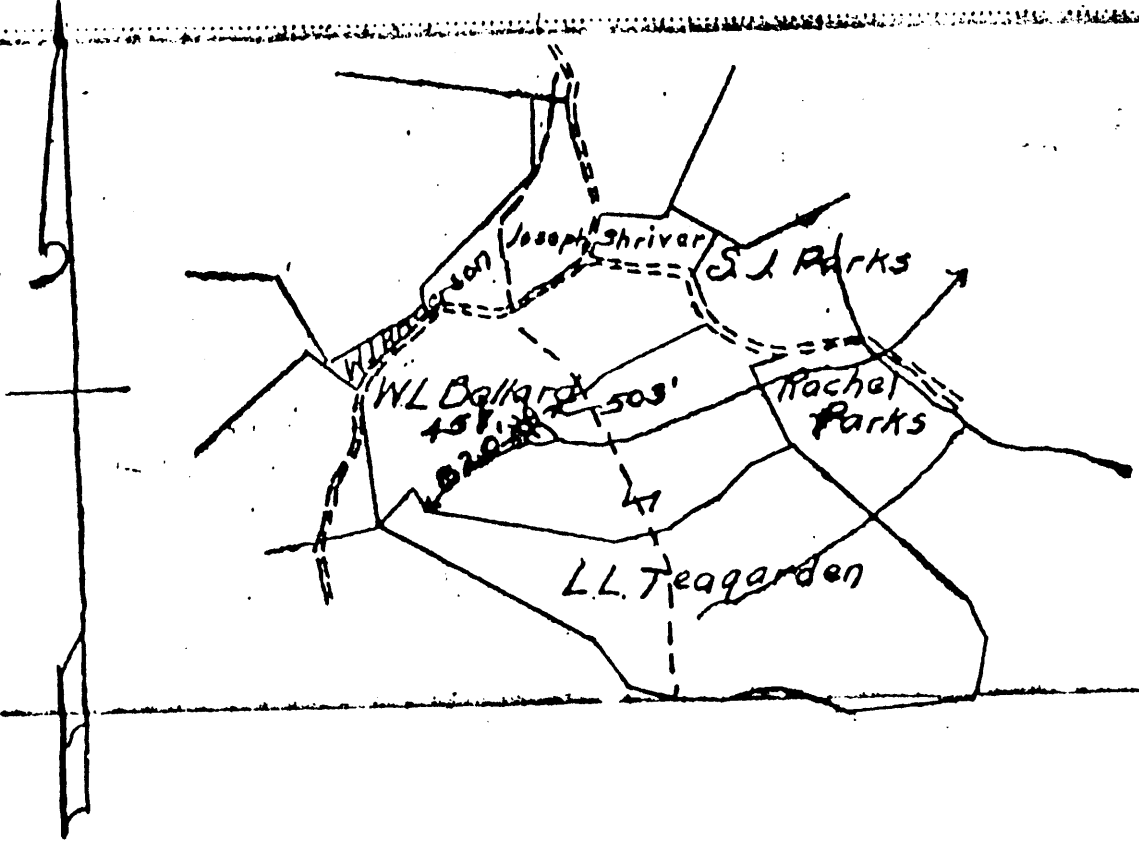
On M. Ballard Farm, on waters of Teagarden Fork

Center Church District, Wetzel County, West Virginia

Lease No. 3248 Acres 47 N. 12 S. E. 6 W.

Scale, one inch equals 80 Poles Sent to 1

Location to be



Meas.
 LOCATION ~~MA 4-24-1911~~
 by F. A. Guy
 As per plat. Except as noted
 On field map 19
 Returned to Pittsburgh 19

PERMIT no. 103 ~~0754~~ 664

RESERVE

SPECIAL INSTRUCTIONS

Location Meas 4-24-11 by F. A. Guy As per plat, except as noted. On field map

Returned to Pittsburgh 1

Location changed on account of

Authorized by Date 1 Signed

WELL RECORD.

Malinda Bellard Farm 53 Acres
 Center District Wetzel County W. Va. State
 Well No. 457
 Rig Commenced July 24 1903
 Rig Completed July 31 1903
 Drilling Commenced Aug 1 1903
 Drilling Completed Oct 2 1903

A. R. Davis Contractor
 Schaffner Bros Contractor

ROCK FORMATION.	TOP	BOTTOM	REMARKS
Conductor	16		
Pittsburg Coal	1075	1096	Steel L
Big Sand	1520	1555	
Gas Sand	1600		1817
Salt	1770	1870	2340
Mapin	2260		2358
Little Linn	2280		
Big Linn	2358		
Gas	2440		
Total Depth	2448		

Cracked

Gas Time 48 Days

CASING RECORD.

Size	Charged to Well		Put in Well		Pulled Out		Left in Well		Removed before Completion		Left as Well Not in Use	
	Feet	In	Feet	In	Feet	In	Feet	In	Feet	In	Feet	In
13"	279		177				177				102	
10"	1607	5	1382	1			1382	1			225	4
8 1/2"	2068	10	1824	2			1824	2			244	8
6 7/8"	2557	10	2356	8			2356	8			203	25

Production First 24 hours } _____ Bbls.
 Approved by _____ Supt.

*Minor.—Sum of Three right hand columns equals First or "Charged to Well."
 Use as many sheets as necessary to make a complete record.
 In making out this record please use copying ink or an indelible pencil.

103-664

Perma no. = 103

1978 Book

WELL RECORD.

UWA

Melinda Bellard Farm 55 Acres
Center Church District Metzel County W. Va. State

Well No. 457
 Rig Commenced July 24 1903
 Rig Completed July 31 1903
 Drilling Commenced Aug. 8 1903
 Drilling Completed Oct. 2 1903

A. R. Davis Contractor.
Schaffner Bros Contractor.

ROCK FORMATION.	TOP.	BOTTOM.	REMARKS.
Conductor	16		
Pittsburg Coal	1075	1081	
Big Limestone	1520	1555	Steel L.
Gas Sand	1600		1817
Salt "	1770	1870	2340
Maple "	2260		2358
Little Limestone	2280		
Big Limestone	2358		
Gas	2440		
Total Depth	2448		

Gas Time 48 Days

CASING RECORD.

Size	Charged to Well.		Put in Well.		Pulled Out.		Left in Well.		Transferred Before Completion.		Left at Well, Not in Use.	
	Feet	In	Feet	In	Feet	In	Feet	In	Feet	In	Feet	In
13"	279		177				177				102	
10"	1607	5	1382	1			1382	1			225	4
8 1/4"	2068	10	1824	2			1824	2			244	8
6 7/8"	2557	10	2356	8			2356	8			203	2

Production First 24 hours } Bbls. _____ Approved by _____ Supt. _____

FOOTNOTES.—Sum of Three right hand columns equals First or "Charged to Well."
 Use as many sheets as necessary to make a complete record.
 In making out this record please use copying ink or an indelible pencil.

Permit no. - 103-6754 ⁶⁶⁴