

Hope Natural Gas Co.

LOCATION FOR WELL No. 162

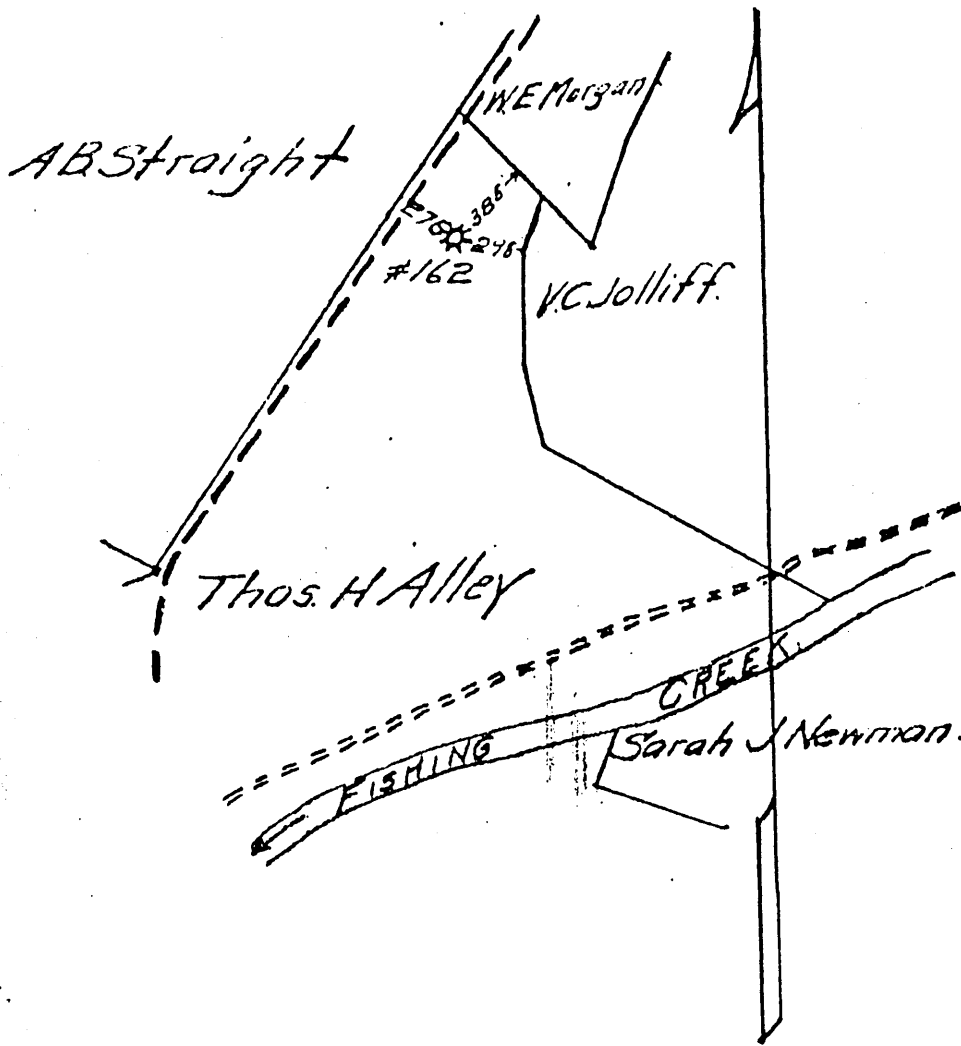
103-061

Pine Grove DISTRICT.

On Thos H Alley Farm, on waters of Fishing Creek
Grant GREEN District, Wetzel County, West Virginia.

Lease No. 740 Acres Range: N. 9 S. B. W. 4

Scale 1" = 800' Made 10-21- 1908



103-659

ENTERED
LINE MAP

BY _____

WELL NO.	
DATE LOCATED	
WELL DEPTH	
WORKING DEPTH	
LOCATION	

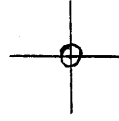
DATE-1-2-09

LOCATION	MEAS	DATE	10-21-1908
BY	J. P. McClintock		
AS per plat.	Except as noted		
On Field Map			13
Returned to Pittsburg			19

RESERVE:

SPECIAL INSTRUCTIONS:

LATITUDE 39° 35' 00"



00° 04' 00" LONGITUDE

7'5 OGIS topo location

7.5' 10C 1.025 15' 10C _____
 ' 1.02W (calc.) _____

Company _____

Farm _____

Quad PINE GROVE 7 1/2'

County WETZEL

District GREEN

WELL LOCATION MAP

File No. 103-0659

(035)

WELL RECORD.

13178 ✓
12814
The Alley Farm, District of Columbia, County of Washington, State of Maryland
Well No. 1

Rig Commenced July 30 1891
Rig Completed Aug 4th 1891
Drilling Commenced Aug 11th 1900
Drilling Completed Oct 18 1900
J. S. Johnston Contractor
Geo. J. Gale Contractor

FORMATION.	TOP.	REMARKS.	BOTTOM.
Conduetion			16
10" casing			476
8 1/4" "			1208
6 5/8" "			1691
5 1/2" "			2142
Pittsburg Coal	7451		7012
Quartzite Sand	1260		1320
Salt Sand	1600		1650
Village Hill	1700		1730
Blue Sand	1730		1740
Big Sand	1940		2000
Big Blue Sand	2000		2240
600 ft Sand	2650		2600
Old Rock	2675		2695
London Gray	2785		
Sand	2785		
Sand measured	2822		
Total Depth			2822
10" casing pulled 8 1/4" casing 690 ft pulled 563 ft left in well. Casing left at 7112			
10" casing at well	476	11	
8 1/4" " " "	767	0	
6 5/8" " " "	504	6	
5 1/2" " " "	1008	1	
J. G. Gale 10/22/1900			

NOTE: A good record must show the formation from top to bottom of well.

o K. J. G.

copy not very clear

103-0659

Green District, Wetzel County, W. Va.
 By South Penn Oil Co.
 1/3 mile northwest of Pine Grove.
 Elevation, 1000' E.

#230 on county rept.

	Top.	Bottom.
Pittsburgh Coal	745	752
Dunkard Sand	1260	1320
Salt Sand	1600	1650
Little Lime	1900	1930
Pencil Cave	1930	1940
Big Lime	1940	2000
Big Injun Sand	2000	2240
Fifty-foot Sand (Berea)	2550	2600
Red rock	2675	2695
Gordon Stray Sand (gas, 2785'; increased at 2822')	2785	
Total depth		2822