

Hope Natural Gas Co.

LOCATION FOR WELL No. 101

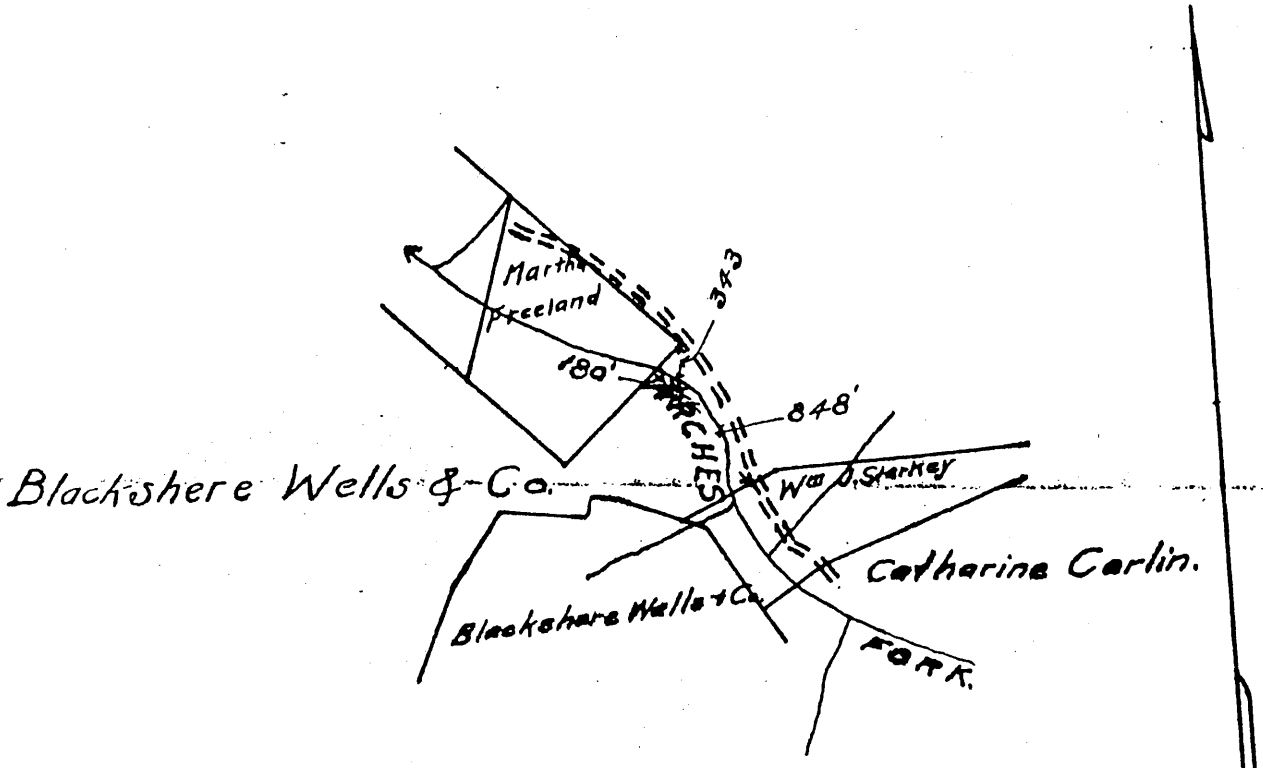
Wetzel DISTRICT.

On Blackshere Wells & Co Farm, on waters of Archers fork

Grant District, Wetzel County, West Virginia.

Lease No. 729 Acres 3800 Range: N. 1 S. E. 3 W.

Scale 1" = 80 poles Made 19



new
 LOCATION ~~MADE~~ *Oct 7* 1908
 BY *Richard Scott*
 As per plat. Except as noted
 On Field Map _____ 19____
 Returned to Pittsburgh _____ 19____

103-0657

RESERVE:.....

 SPECIAL INSTRUCTIONS:.....

WELL RECORD.

M

RWH

B. McLean Farm _____ Acres _____
Grant District *Madison* County *Ala* State

Well No. *101*
 Rig Commenced _____ 190 } _____ Contractor.
 Rig Completed _____ 190 }
 Drilling Commenced _____ 190 }
 Drilling Completed _____ 190 } _____ Contractor.

ROCK FORMATION.	TOP.	BOTTOM.	REMARKS.
<i>Conductor</i>		<i>12</i>	<i>5 7/8 casing was put in after well was drilled to Gordon by H.D. Co</i>
<i>Pittsburg Coal</i>	<i>656</i>	<i>646</i>	
<i>Big Spring</i>	<i>1772</i>		
<i>Gas</i>	<i>2080</i>		
<i>Total Depth</i>		<i>2084</i>	
<i>Continued on Record</i>			
<i>Commenced May 26 - 1905</i>			
<i>Big Spring</i>	<i>1972</i>	<i>2117</i>	
<i>Gray Sand</i>	<i>2723</i>	<i>2743</i>	
<i>Gas (exist)</i>	<i>2723</i>		
<i>Gordon Sand</i>	<i>2713</i>	<i>2750</i>	
<i>Gas</i>	<i>2743</i>		
<i>Total Depth</i>		<i>2750</i>	
<i>Completed Aug 2 - 1905</i>			

2750
2084

666 new ftg.

CASING RECORD.

Size	Charged to Well.		Put In Well.		Pulled Out.		Left in Well.		Transferred Before Completion.		Left at Well, Not in Use.	
	Feet	In	Feet	In	Feet	In	Feet	In	Feet	In	Feet	In
<i>10</i>							<i>240</i>					
<i>8 1/4</i>							<i>1138</i>					
<i>6 5/8</i>							<i>1972</i>					
<i>5 7/8</i>							<i>2260</i>	<i>8</i>				

Approved by _____

Production First 24 hours _____ Bbls. _____ Supt. _____

Proof. - Sum of Three right hand columns equals First or "Charged to Well."
 Use as many sheets as necessary to make a complete record.
 In making out this record please use copying ink or an indelible pencil.

103-657