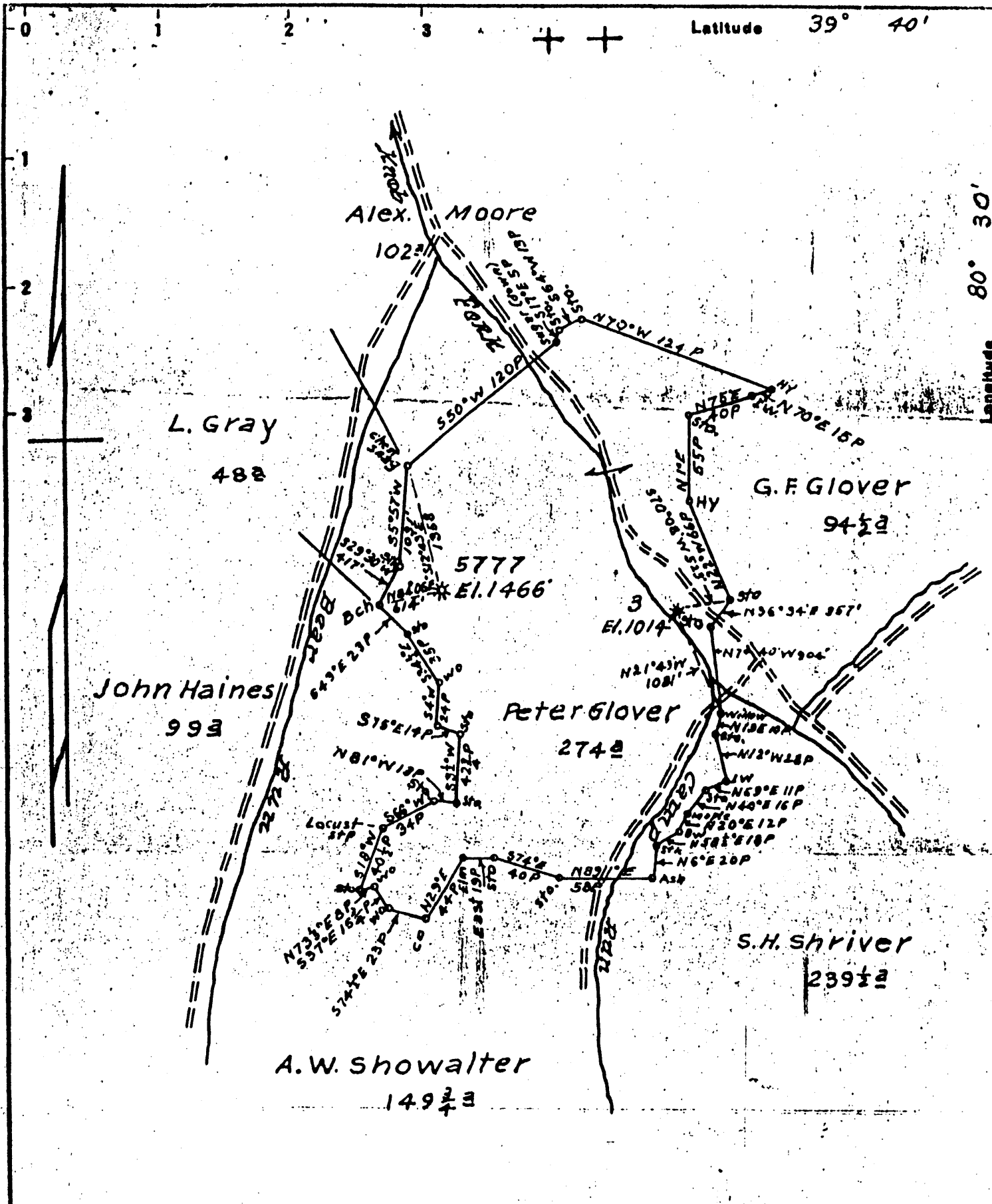


Latitude 39° 40'

Longitude 80° 30'



New Location...
 Drill Deeper...
 Abandonment... 5777

FB 932 P-1.
 Map Sh. 32 N 15 E 4-5 FB 929 P 37-38

Company	<u>Hope Natural Gas Co</u>
Address	<u>Clarksburg W.Va.</u>
Farm	<u>Peter Glover</u>
Tract	Acres <u>274</u> Lease No. <u>243</u>
Well (Farm) No.	Serial No. <u>As Shown</u>
Elevation (Spirit Level)	<u>As Shown</u>
Quadrangle	<u>Littleton</u>
County	<u>Wetzel</u> District <u>Center</u>
Engineer	<u>Wm Bowers</u>
Engineer's Registration No.	<u>900</u>
File No.	Drawing No.
Date	<u>5-2-49</u> Scale <u>1" = 1320'</u>

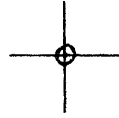
STATE OF WEST VIRGINIA
 DEPARTMENT OF MINES
 OIL AND GAS DIVISION
 CHARLESTON

WELL LOCATION MAP
 FILE NO. 103-0646

+ Denotes location of well on United States Topographic Maps, scale 1 to 62,500, latitude and longitude lines being represented by border lines as shown.

- Denotes one inch spaces on border line of original tracing.

LATITUDE 39° 40' 00"



80° 32' 30"

LONGITUDE

7.5 OGIS topo location

7.5' loc 0.33 S 15' loc _____
' 1.21 W (calc.) _____

Company _____

Farm _____

Quad LITTLETON 7 1/2'

County WETZEL

District CENTER

WELL LOCATION MAP

File No. 103-0646

(043)

273

WELL RECORD

11679

Peter Glover Farm
Day District *Wetzel* County *W. Va.* State

Well No. *1*
 Rig Commenced _____ 189____ } *C. E. Englefield* Contractor
 Rig Completed _____ 189____ }
 Drilling Commenced *Feb 4* 189*7* } *W. M. Graham* Contractor
 Drilling Completed *May 19* 189*7* }

FORMATION	TOP	REMARKS	BOTTOM
<i>Condr</i>	<i>12 ft</i>		
<i>13 1/4 sand</i>	<i>203</i>		
<i>8 1/4</i>	<i>1730</i>		
<i>6 1/8</i>	<i>1970</i>		
<i>Mapleton Coal</i>	<i>670</i>		
<i>Rgh</i>	<i>781</i>		
<i>Level Dunkard Sand</i>	<i>1160</i>		<i>1190</i>
<i>Big</i>	<i>1370</i>		<i>1345</i>
<i>Sat Sand</i>	<i>1700</i>		<i>1770</i>
<i>Big Lene</i>	<i>1850</i>		<i>1998</i>
<i>Injun Sand</i>	<i>1998</i>		
<i>Gas at</i>	<i>1998</i>		
<i>Total Depth</i>			<i>2018</i>

Note: A good record must show the formation from top to bottom of well

API 703 0646