

West Virginia Department of Environmental Protection
Office of Oil & Gas
WELL LOCATION FORM: GPS

API: 47- 103 - 0571 P WELL NO: No.151
FARM NAME: John Mills
RESPONSIBLE PARTY NAME: East Resources, Inc.
COUNTY: Wetzel DISTRICT: Green
QUADRANGLE: Centerpoint 7.5'
SURFACE OWNER: W.Va. Public Lands Corporation
ROYALTY OWNER: East Resources, Inc. et al.
UTM GPS NORTHING: 4,371,792 (NAD 27)
UTM GPS EASTING: 528,322 (NAD 27) GPS ELEVATION: 284 m.

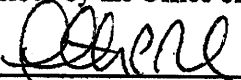
The Responsible Party named above has chosen to submit GPS coordinates in lieu of preparing a new well location plat for a plugging permit on the above well. The Office of Oil & Gas will not accept GPS coordinates that do not meet the following requirements:

1. Datum: NAD 1983, Zone:17 North, Coordinate Units: meters, Altitude: height above mean sea level (MSL) - meters.
2. Accuracy to Datum - 3.05 meters
3. Data Collection Method:

Survey Grade GPS Post Processed Differential
 Real-Time Differential
Mapping Grade GPS Post Processed Differential
 Real-Time Differential

RECEIVED
Office of Oil & Gas
NOV - 4 2010
WV Department of
Environmental Protection

I the undersigned, hereby certify this data is correct to the best of my knowledge and belief and shows all the information required by law and the regulations issued and prescribed by the Office of Oil and Gas.

 Timothy P. Roush
Signature

Professional Surveyor
Title

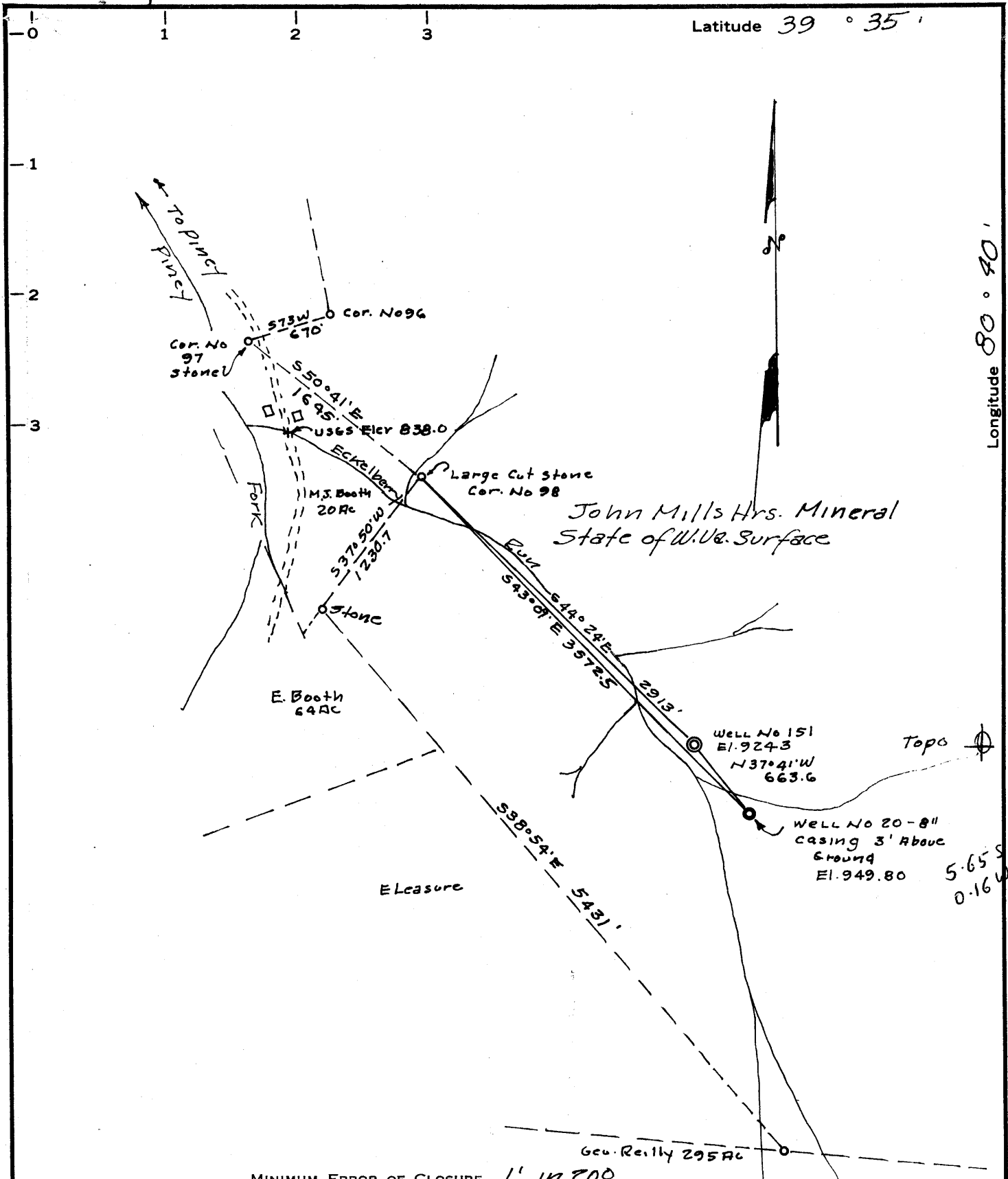
October 28, 2010
Date

M

P

Latitude 39 ° 35'

Longitude 80 ° 40'



MINIMUM ERROR OF CLOSURE 1" IN 200

SOURCE OF ELEVATION USGS Elev @ Intersection of Eckelberry Run

& Piney Fork Road Elev. 838.0

New Location
 Drill Deeper
 Abandonment

"I, THE UNDERSIGNED, HEREBY CERTIFY THAT THIS MAP IS CORRECT TO THE BEST OF MY KNOWLEDGE AND BELIEF AND SHOWS ALL THE INFORMATION REQUIRED BY PARAGRAPH 6 OF THE RULES AND REGULATIONS OF THE OIL AND GAS SECTION OF THE MINING LAWS OF WEST VIRGINIA."

Company Quaker State Oil Refg. Corp.
 Address P.O. Box 1327 - Parkersburg, W. Va.
State of W. Va. Surface
 Farm John Mills Hrs Mineral
 Tract. 5200 Acres _____ Lease No. _____
 Well (Farm) No. 151 Serial No. _____
 Elevation (Spirit Level) 924.3
 Quadrangle Littleton SW
 County Wetzel District Greene
 Engineer [Signature]
 Engineer's Registration No. 2492
 File No. _____ Drawing No. _____
 Date Mar. 24, 1966 Scale 1" = 1000'

STATE OF WEST VIRGINIA
 DEPARTMENT OF MINES
 OIL AND GAS DIVISION
 CHARLESTON

WELL LOCATION MAP
 FILE NO. WET-571

+ Denotes location of well on United States Topographic Maps, scale 1 to 62,500, latitude and longitude lines being represented by border lines as shown.
 — Denotes one inch spaces on border line of original tracing.



STATE OF WEST VIRGINIA
DEPARTMENT OF MINES
OIL AND GAS DIVISION 21

Rotary
Spudder
Cable Tools
Storage

Oil or Gas Well Oil & Gas
(KIND)

Quadrangle Littleton

Permit No. WET-571

WELL RECORD

Company Quaker State Oil Refining Corporation
Address P. O. Box 1327, Parkersburg, W. Va.
Farm John Mills Estate Acres 5200
Location (waters) Eckelberry Run
Well No. 151 Elev. 924.3
District Greene County Wetzel
The surface of tract is owned in fee by ---
Address ---
Mineral rights are owned by Mills-Wetzel Lands, Inc.
Address 418 S. 5th St. Geneva, Illinois
Drilling commenced 5-2-66
Drilling completed 6-15-66
Date Shot From To
With ---

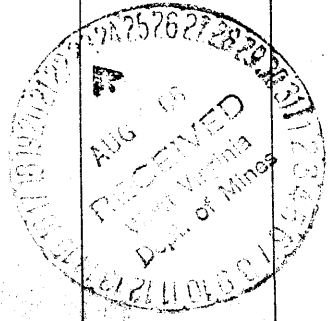
| Casing and Tubing | Used in Drilling | Left in Well | Packers |
|-------------------|------------------|--------------|----------------|
| Size | | | Kind of Packer |
| 16 | | | |
| 13 | 16 | 16' | |
| 10 | 276 | -- | Size of |
| 8 1/4 | 1233 | -- | |
| 7 3/8 | 1963 | 1963 | Depth set |
| 5 3/16 | | 2850' | |
| 4 1/2 | | | |
| 3 | | | Perf. top |
| 2 | | | Perf. bottom |
| Liners Used | | | Perf. top |
| | | | Perf. bottom |

Open Flow 10ths Water in --- Inch
10ths Merc. in --- Inch
Volume 12,000 cf Cu. Ft.
Rock Pressure 224# lbs. 96 hrs.
Oil 1 BOPD bbls., 1st 24 hrs.

Attach copy of cementing record.
CASING CEMENTED 4 1/2" SIZE 2850 No. Ft. 7-8-66 Date
Amount of cement used (bags) 150 cf of Pozmix
Name of Service Co. Dowell
COAL WAS ENCOUNTERED AT 345 FEET 60 INCHES
450 FEET Show INCHES 683 FEET 12 INCHES
FEET INCHES FEET INCHES

WELL ACIDIZED (DETAILS) No
WELL FRACTURED (DETAILS) by Halliburton 7-15-66 in two stages - used 35,800 gallon of crude oil & solvent, 18,000# 20-40 sand and 800# of Adomite Mark II
RESULT AFTER TREATMENT (Initial open Flow or bbls.) 5 BOPD & 30,000 cf
ROCK PRESSURE AFTER TREATMENT --- HOURS
Fresh Water 75 Feet Salt Water 1731 Feet
Producing Sand Gordon Depth

| Formation | Color | Hard or Soft | Top | Bottom | Oil, Gas or Water | Depth | Remarks |
|---------------------|-------|--------------|---------|--------|-------------------|-------|---------|
| Gravel & clay | | | Surface | 6 | | | |
| Lime | | | 6 | 12 | | | |
| Shale | | | 12 | 24 | | | |
| Red rock | | | 24 | 32 | | | |
| Lime | | | 32 | 40 | | | |
| Shale | | | 40 | 54 | | | |
| Sand | | | 54 | 62 | | | |
| Shale | | | 62 | 75 | | | |
| Lime | | | 75 | 80 | | | |
| Shale | | | 80 | 92 | | | |
| Red rock | | | 92 | 104 | | | |
| Lime | | | 104 | 109 | | | |
| Shale | | | 109 | 122 | | | |
| Lime | | | 122 | 130 | | | |
| Red rock | | | 130 | 136 | | | |
| Shale | | | 136 | 150 | | | |
| Red rock | | | 150 | 155 | | | |
| Lime | | | 155 | 162 | | | |
| Shale | | | 162 | 174 | | | |
| Lime | | | 174 | 182 | | | |
| Shale | | | 182 | 203 | | | |
| Sand | | | 203 | 227 | | | |
| Shale & lime shells | | | 227 | 274 | | | |
| Lime | | | 274 | 292 | | | |
| Shale & lime shells | | | 292 | 345 | | | |
| Coal | | | 345 | 350 | | | |
| Shale & lime shells | | | 350 | 397 | | | |
| Lime | | | 397 | 401 | | | |
| Shale | | | 401 | 415 | | | |
| Red rock | | | 415 | 425 | | | |



For-post
8-23-66
WB

| Formation | Color | Hard or Soft | Top 2/ | Bottom | Oil, Gas or Water | Depth Found | Remarks |
|-------------------------------|-------|--------------|--------|--------|----------------------------|-------------|---------|
| Lime | | | 425 | 447 | Show of coal @ 450' | | |
| Shale | | | 447 | 460 | | | |
| Lime | | | 460 | 480 | | | |
| Shale & shells | | | 480 | 500 | | | |
| Red rock | | | 500 | 514 | | | |
| Lime | | | 514 | 520 | | | |
| Shale | | | 520 | 530 | | | |
| Lime | | | 530 | 562 | | | |
| Shale & shells | | | 562 | 610 | | | |
| Lime | | | 610 | 622 | | | |
| Shale | | | 622 | 643 | | | |
| Lime | | | 643 | 660 | | | |
| Shale | | | 660 | 670 | | | |
| Lime | | | 670 | 678 | | | |
| Shale & shells | | | 678 | 683 | | | |
| Coal-Pittsburgh | | | 683 | 684 | | | |
| Shale & shells | | | 684 | 690 | | | |
| Lime | | | 690 | 724 | | | |
| Shale & lime shells | | | 724 | 763 | | | |
| Lime | | | 763 | 775 | | | |
| Red rock | | | 775 | 782 | | | |
| Lime | | | 782 | 792 | | | |
| Shale | | | 792 | 807 | | | |
| Sand | | | 807 | 830 | | | |
| Shale | | | 830 | 843 | | | |
| Lime | | | 843 | 870 | | | |
| Shale | | | 870 | 874 | | | |
| Red rock | | | 874 | 886 | | | |
| Lime | | | 886 | 898 | | | |
| Shale | | | 898 | 905 | | | |
| Lime | | | 905 | 922 | | | |
| Red rock | | | 922 | 933 | | | |
| Lime | | | 933 | 940 | | | |
| Red rock | | | 940 | 962 | | | |
| Shale | | | 962 | 978 | | | |
| Lime | | | 978 | 984 | | | |
| Shale, lime shells & red rock | | | 984 | 1025 | | | |
| Red rock | | | 1025 | 1050 | | | |
| Shale | | | 1050 | 1090 | | | |
| Sand 150' salt | | | 1090 | 1126 | Oil - 2 BOPD - 1090-1110 | | |
| Shale | | | 1126 | 1129 | | | |
| Sand 80' | | | 1129 | 1140 | | | |
| Shale | | | 1140 | 1155 | | | |
| Lime | | | 1155 | 1161 | | | |
| Sandy shale | | | 1161 | 1219 | | | |
| Sand | | | 1219 | 1270 | | | |
| Shale | | | 1270 | 1295 | | | |
| Lime | | | 1295 | 1309 | | | |
| Shale | | | 1309 | 1312 | | | |
| Lime | | | 1312 | 1345 | | | |
| Sand 200' salt | | | 1345 | 1415 | | | |
| Shale | | | 1415 | 1447 | | | |
| Sand 150' salt | | | 1447 | 1469 | | | |
| Shale | | | 1469 | 1475 | | | |
| Lime | | | 1475 | 1480 | | | |
| Shale & shells | | | 1480 | 1495 | | | |
| Lime | | | 1495 | 1508 | | | |
| Shale & lime shells | | | 1508 | 1565 | | | |
| Sand 200' salt | | | 1565 | 1605 | | | |
| Shale | | | 1605 | 1611 | | | |
| Sand 300' salt | | | 1611 | 1630 | | | |
| Black shale | | | 1630 | 1635 | | | |
| Sand | | | 1635 | 1663 | | | |
| Shale | | | 1663 | 1690 | | | |
| Sand 200' salt | | | 1690 | 1766 | 1/2 bailer water/hr @ 1731 | | |
| Shale & shells | | | 1766 | 1795 | | | |
| Red rock | | | 1795 | 1849 | | | |

Continued on Page Two

Date August 22, 1966

APPROVED Quaker State Oil Refining Corporation, Owner
 By Thomas H. Richard
 (Title) Engineer

Form OG-10



STATE OF WEST VIRGINIA
DEPARTMENT OF MINES
OIL AND GAS DIVISION 21 -

- Rotary
- Spudder
- Cable Tools
- Storage

Quadrangle Littleton

Permit No. WET-571

WELL RECORD

Oil or Gas Well (KIND)

Company Quaker State Oil Refining Corporation
 Address P. O. Box 1327, Parkersburg, W. Va.
 Farm John Mills Estate Acres 5200
 Location (waters) Eckelberry Run
 Well No. 151 Elev. 924.3
 District Greene County Wetzel
 The surface of tract is owned in fee by _____
 Address _____
 Mineral rights are owned by Mills-Wetzel Lands, Inc.
 Address Geneva, Illinois
 Drilling commenced: 5-2-66
 Drilling completed 6-15-66
 Date Shot From _____ To _____
 With _____
 Open Flow /10ths Water in _____ Inch
 /10ths Merc. in _____ Inch
 Volume _____ Cu. Ft.
 Rock Pressure _____ lbs. _____ hrs.
 Oil _____ bbls., 1st 24 hrs.

| Casing and Tubing | Used in Drilling | Left in Well | Packers |
|-------------------|------------------|--------------|----------------|
| Size | | | Kind of Packer |
| 16 | | | |
| 13 | | | Size of |
| 10 | | | Depth set |
| 8 1/4 | | | |
| 6 5/8 | | | Perf. top |
| 5 3/16 | | | Perf. bottom |
| 4 1/2 | | | |
| 3 | | | Perf. top |
| 2 | | | Perf. bottom |
| Liners Used | | | |

WELL ACIDIZED (DETAILS) _____
 WELL FRACTURED (DETAILS) _____

Attach copy of cementing record.
 CASING CEMENTED _____ SIZE _____ No. Ft. _____
 Amount of cement used (bags) _____
 Name of Service Co. _____
 COAL WAS ENCOUNTERED AT _____ FEET _____ INCH _____
 _____ FEET _____ INCHES _____ FEET _____ INCH
 _____ FEET _____ INCHES _____ FEET _____ INCH

RESULT AFTER TREATMENT (Initial open Flow or bbls.) _____
 ROCK PRESSURE AFTER TREATMENT _____ HOURS _____
 Fresh Water _____ Feet _____ Salt Water _____ Feet _____
 Producing Sand _____ Depth _____

| Formation | Color | Hard or Soft | Top | Bottom | Oil, Gas or Water | Depth | Remarks |
|---|-------|--------------|------|---|----------------------------|--------------------------|------------------------------------|
| | | | | (Continued from Page No. ONE) | | | |
| Sandy shale | | | 1849 | 1916 | 1948 924 <u>1024</u> | 924 <u>683</u> 241 | 1 BOPD & 3.4 BOPD, 2610 cf @ 2104- |
| lime | | | 1916 | 1922 | | | |
| Shale | | | 1922 | 1939 | | | |
| lime | | | 1939 | 1945 | | | |
| Shale P.C. | | | 1945 | 1948 | | | |
| lime | | | 1948 | 2005 | | | |
| Injun Sand | | | 2005 | 2192 | | | |
| Shale & shells | | | 2192 | 2290 | | | |
| Sandy shale | | | 2290 | 2350 | | | |
| Sand | | | 2350 | 2395 | | | |
| lime | | | 2395 | 2410 | | | |
| Shale & shells | | | 2410 | 2558 | | | |
| Sand | | | 2558 | 2566 | | | |
| Shale | | | 2566 | 2620 | | | |
| Pink shale | | | 2620 | 2650 | | | |
| Shale & shells | | | 2650 | 2764 | | | |
| Gordon Stray? | | | 2764 | 2802 | | | 12,000 cf @ 2790-92 |
| Shale | | | 2802 | 2812 | | | |
| Gordon | | | 2812 | 2826 | | | 1 BOPD @ 2812-26 |
| Shale | | | 2826 | 2850 | | | |
| TOTAL DEPTH | | | | 2850 | | | |
| Logged by Firdwell 6-16-66: G R, Density, Neutron and Induction | | | | Perforations by Smythe & Williams 7-15-66: 2813 - 2824 (9 holes) & 2779 - 2797 (12 holes) | | | |