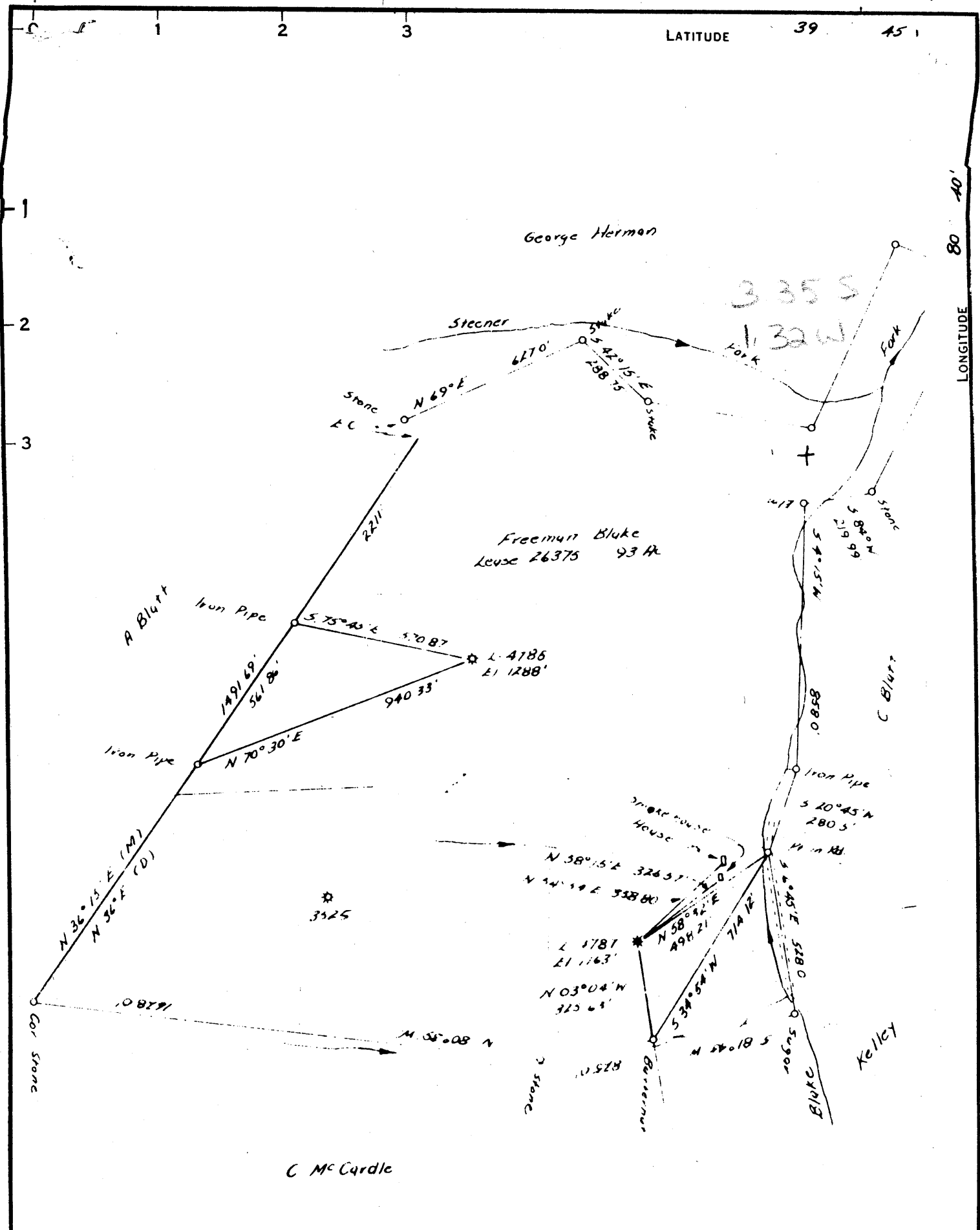


M x



COAL OWNED BY **R.M. White**

- NEW LOCATION **Storge**
- RECONDITION
- DRILL DEEPER
- ABANDONMENT

I, the undersigned hereby certify that this map is correct to the best of my knowledge and belief and shows all the information required by paragraph 6 of the rules and regulations of the oil and gas section of the mining laws of West Virginia.  
 Minimum degree of accuracy is one part in **200**

Signed *[Signature]* (J.F.)

COMPANY **The Manufacturers Light And Heat Company**  
 ADDRESS **800 Union Trust Bldg. Pittsburgh, Penna.**  
 FARM **Freeman Blake**  
 MAP **P-2517** ACRES **93** LEASE NO **L-26375**  
 WELL (FARM) NO **3** SERIAL NO **L-4787**  
 ELEVATION (SPIRIT LEVEL) **1163'**  
 QUADRANGLE **Littleton 15' NW**  
 COUNTY **Wetzel** DISTRICT **Proctor**  
 POINT OF PROVEN ELEVATION **Intersection of roads at Scheibelhood farm in Steener Fork**  
 FILE NO. **Y-25-796**  
 DATE **July 30, 1963** DRAWING NO. **Y-25-796**  
 SCALE **1" = 400'**

STATE OF WEST VIRGINIA  
 DEPARTMENT OF MINES  
 OIL AND GAS DIVISION  
 CHARLESTON  
**WELL LOCATION MAP**  
 FILE NO. **WET-554**

+ DENOTES LOCATION OF WELL ON UNITED STATES TOPOGRAPHIC MAPS SCALE 1 TO 62 500 LATITUDE AND LONGITUDE LINES BEING REPRESENTED BY BORDER LINES AS SHOWN.  
 - DENOTES ONE INCH SPACES ON BORDER LINE OF ORIGINAL TRACING.



STATE OF WEST VIRGINIA  
DEPARTMENT OF MINES  
OIL AND GAS DIVISION

Quadrangle Littleton

WELL RECORD

Permit No. WET-554

Oil or Gas Well GAS  
*Storage*  
(MWD)

Company The Mfrs. Lt. and Ht. Co.  
Address 800 Union Trust Bldg., Pittsburgh 19, Pa.  
Farm Freeman Blake Acres 93  
Location (waters) \_\_\_\_\_  
Well No. 4787 Elev. 1163.00'  
District Proctor County Wetzel  
The surface of tract is owned in fee by \_\_\_\_\_  
Address \_\_\_\_\_  
Mineral rights are owned by \_\_\_\_\_  
Address \_\_\_\_\_

Drilling commenced September 17, 1963  
Drilling completed September 26, 1963  
Date Started 9/26/63 From Maxton To \_\_\_\_\_  
With Pilot Tube

Open Flow 45 /10ths Water in \_\_\_\_\_ Inch  
4 1/2 /10ths Merc. in \_\_\_\_\_ Inch  
Volume 4,090,000 Cu. Ft.  
Rock Pressure 720 lbs. 24 hrs.  
Oil \_\_\_\_\_ bbls., 1st 24 hrs.  
Fresh water \_\_\_\_\_ feet  
Salt water \_\_\_\_\_ feet

Casing and Tubing	Used in Drilling	Left in Well	Packers
Size			
16			Kind of Packer
12 3/8"	32'	32'	
10			Size of
8 5/8"	1033'	1033'	Depth set
6"			Perf. top
5 1/2"	2069'	2069'	Perf. bottom
4"			Perf. top
2"			Perf. bottom
Liners Used			

CASING CEMENTED \_\_\_\_\_ SIZE \_\_\_\_\_ No. Ft. \_\_\_\_\_  
COAL WAS ENCOUNTERED AT 947 FEET \_\_\_\_\_ INCHES  
\_\_\_\_\_ FEET \_\_\_\_\_ INCHES \_\_\_\_\_ FEET \_\_\_\_\_ INCHES  
\_\_\_\_\_ FEET \_\_\_\_\_ INCHES \_\_\_\_\_ FEET \_\_\_\_\_ INCHES

Formation	Color	THICKNESS	Top	Bottom	Oil, Gas or Water	Depth Found	Remarks
Pittsburgh Coal			947	953			
Murphy Sand			1020	1043			
Big Dunkard Sand			1425	1455			
First Salt Sand			1684	1704			
Third Salt Sand			1826	1863			Perforated from 1954' to 1968'
Maxton Sand			1954	1980			Perforated from 1970' to 1980'
Total Depth				2049			
5 1/2" Floast Shoe Set				2069			
1 1/2" Floast Check Valve Set				2059			

