

0

1

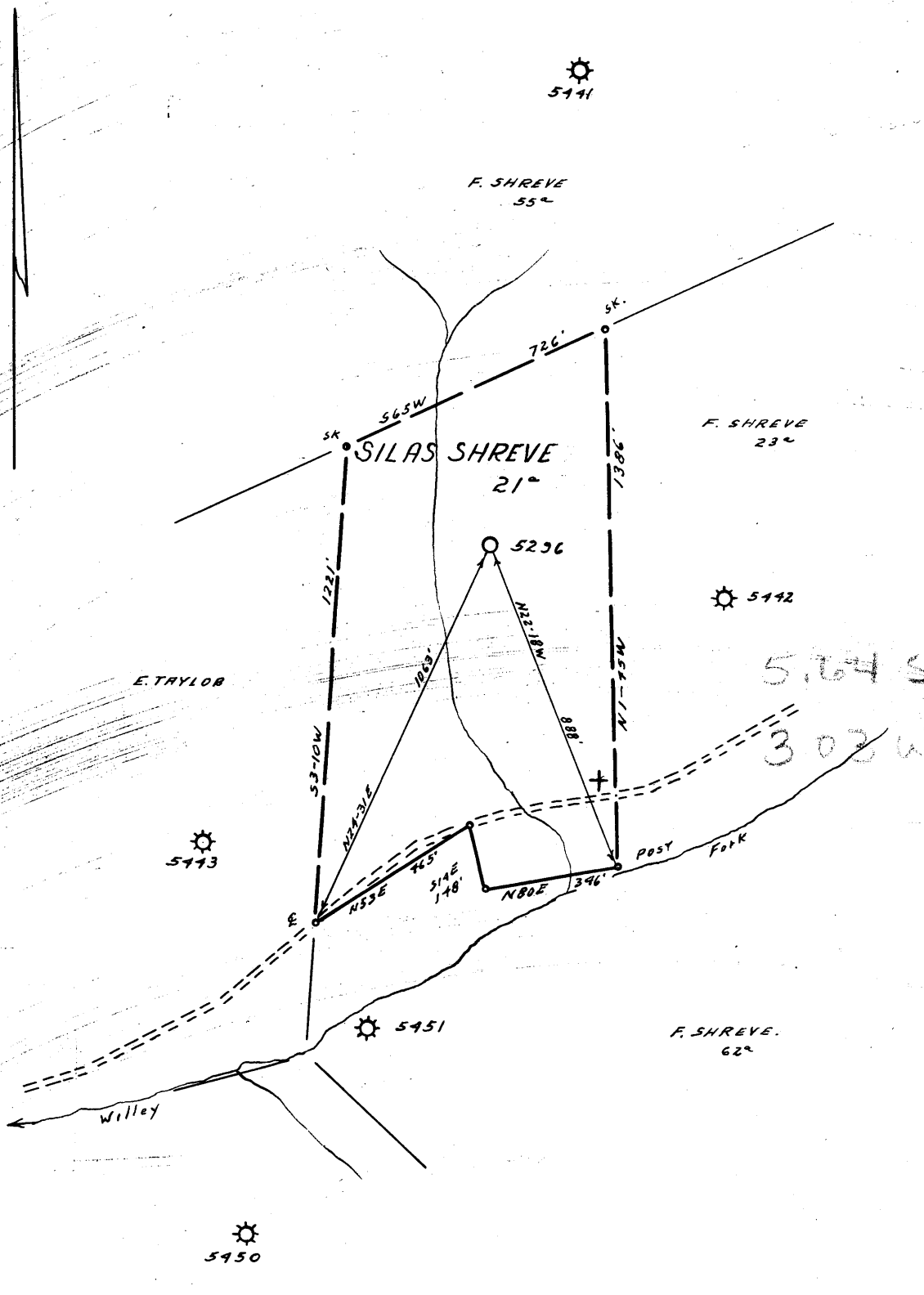
2

3

1

2

3



- Redrill.....  PARTIAL PLUG
- New Location.
- Drill Deeper.....
- Abandonment.....

Company EQUITABLE GAS CO. W.VA. DIV.  
 Address PITTSBURGH 19, PA.  
 Farm SILAS SHREVE  
 Tract \_\_\_\_\_ Acres 21 Lease No. 16735  
 Well (Farm) No. 1 Serial No. 5296  
 Elevation (Spirit Level) 972' VA.  
 Quadrangle LITTLETON SE 23 EC  
 County WETZEL District GRANT  
 Engineer James R. Hoffman  
 Engineer's Registration No. 1084  
 File No. 205/28 Drawing No. \_\_\_\_\_  
 Date 7-13-62 Scale 1" = 400'

STATE OF WEST VIRGINIA  
 DEPARTMENT OF MINES  
 OIL AND GAS DIVISION  
 CHARLESTON

**WELL LOCATION MAP**

FILE NO. Wet-524  
 RECONDITION FOR STORAGE

+ Denotes location of well on United States Topographic Maps, scale 1 to 62,500, latitude and longitude lines being represented by border lines as shown.

— Denotes one inch spaces on border line of original tracing.

9-045

RDM



STATE OF WEST VIRGINIA  
DEPARTMENT OF MINES  
OIL AND GAS DIVISION

Quadrangle Littleton SE 2.3

Permit No. WET-524

**WELL RECORD**  
PARTIAL PLUG AND RECONDITION

Oil or Gas Well Gas Storage  
(KIND)

Company Equitable Gas Company  
Address 420 Blvd. of the Allies, Pgh. 19, Pa.  
Farm S. Shreve Acres 22  
Location (waters) Littleton SE 2.3  
Well No. 5296 Elev. 972  
District Grant County Wetzel  
The surface of tract is owned in fee by T. and Ola Dulaney  
Address Big Run, West Va.  
Mineral rights are owned by F. M. Tuttle et al  
Address West Virginia  
New Martinsville  
Repair Drilling commenced 7-23-62  
Repair Drilling completed 10-24-62  
Date Shot -- From -- To --  
With --  
Open Flow /10ths Water in -- Inch  
/10ths Merc. in -- Inch  
Volume -- Cu. Ft.  
Rock Pressure -- lbs. -- hrs.  
Oil -- bbls., 1st 24 hrs.  
WELL ACIDIZED --  
WELL FRACTURED --

Casing and Tubing	Used in Drilling	Left in Well	Packers
Size			Kind of Packer
16			Combination
13			Size of <u>6-5/8" x 3"</u>
10	<u>409</u>	<u>409</u>	Depth set <u>1930</u>
8 1/4	<u>1295</u>	<u>1295</u>	Perf. top <u>1930</u>
6 3/4	<u>1875</u>	<u>1875</u>	Perf. bottom <u>1995</u>
5 3/16			Perf. top <u>--</u>
3			Perf. bottom <u>--</u>
2			
Liners Used			

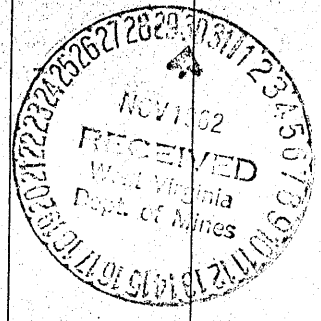
CASING CEMENTED	SIZE	No. Ft.	Date
COAL WAS ENCOUNTERED AT	<u>205</u>	<u>60</u>	<u>INCHES</u>
<u>335</u>	<u>60</u>	<u>448</u>	<u>INCHES</u>
<u>590</u>	<u>60</u>	<u>685</u>	<u>INCHES</u>

RESULT AFTER TREATMENT --

ROCK PRESSURE AFTER TREATMENT --

Fresh Water -- Feet Salt Water -- Feet

Formation	Color	Hard or Soft	Top	Bottom	Oil, Gas or Water	Depth	Remarks
✓ Coal			205	210			
✓ Coal			335	340			Driller
✓ Coal			448	450			Driller
✓ Mapletown Coal			590	595			Driller
✓ Pittsburgh Coal			685	691			Driller
✓ Murphy Sand			822	875			Driller
✓ Big Dunkard Sand			1130	1185			
✓ Gas Sand			1305	1368			
✓ Salt Sand			1430	1465			
✓ Salt Sand			1483	1511			
✓ Salt Sand			1563	1642			
✓ Maxton Sand			1843	1856			
✓ Big Lime			1871	1924			
✓ Big Injun Sand			1936	1992			
✓ Big Injun Sand			2005	2148			
✓ Squaw Sand			2278	2283			
✓ Fifty Foot Sand			2643	2649			
Cleaned Out to				2714			
Cavings			2707	2714			
Cement			1996	2707			
Iron			1995	1996			
Completed Total Depth				1995			



NOTE: Log shown from Gamma Ray Survey except where noted.  
168' - old 3" tubing and packer left in hole from 2,882' to 2,714'.  
Well located in Mobley Gas Storage Pool Area.  
Aquagel around 3" from 1930' to surface.

Record of Well No. *5296* Located on *Silas Shreeves* Farm *No. 8* 19-18  
 District *Wetzel* County *W. Va.* State  
 Division *D* District No. *12* Drilled under Well Order *1321*  
 Rig built by *John Craig* Began *Dec. 17* 1918 Completed *Dec. 21* 1918  
 Well drilled by *Eugen McEdgar* Began *Jan. 22* 1919 Completed *Apr. 5* 1919  
 Depth of Well *2882* feet Size of Hole *6 5/8* Producing *Gas*  
 Elev: *972*

CASED WITH REMARKS

AMOUNT	SIZE	KIND
<i>16'</i>	<i>13"</i>	<i>Wood</i>
<i>409'</i>	<i>10"</i>	<i>New</i>
<i>1295'</i>	<i>8 1/4"</i>	<i>"</i>
<i>1895'</i>	<i>6 5/8"</i>	<i>"</i>
<i>2882'</i>	<i>3</i>	

COAL VEINS *Mapletown 690 Pgh. 685*  
*695 Pgh. 691*

FORMATIONS

NAME	TOP	BOTTOM	OIL	GAS	WATER	REMARKS
<i>Big Dunkard</i>	<i>1150</i>	<i>1250</i>				<i>Pencil Coal Cemented</i>
<i>Says Sand</i>	<i>1334</i>	<i>1390</i>				
<i>1st. Salt sand</i>	<i>1435</i>	<i>1475</i>				
<i>2nd "</i>	<i>1495</i>	<i>1530</i>			<i>1610</i>	<i>5. Baileys sh.</i>
<i>3rd "</i>	<i>1575</i>	<i>1695</i>			<i>1600</i>	<i>Hole full</i>
<i>Slate</i>	<i>1708</i>	<i>1710</i>				
<i>Maxon sand</i>	<i>1775</i>	<i>1790</i>				
<i>Little lime</i>	<i>1865</i>	<i>1885</i>				
<i>Pencil Coal</i>	<i>1885</i>	<i>1890</i>				
<i>Big Lime</i>	<i>1890</i>	<i>1944</i>		<i>194992</i>		<i>show</i>
<i>Big Trifun</i>	<i>1944</i>	<i>2150</i>		<i>2034</i>		<i>2 7/8" to 1.4W2"</i>
<i>Soft sand</i>	<i>2265</i>	<i>2370</i>		<i>2045</i>		
<i>Spry Stray</i>	<i>2714</i>	<i>2760</i>		<i>2751-58</i>		<i>6M 2"</i>
<i>Gordon sand.</i>	<i>2796</i>	<i>2816.</i>		<i>2801-08</i>		<i>2.47M 2" 762 Mcf</i>

6580  
 30 Sec. 7 2 lbs.  
 1 Min. 14 4 "  
 2 " 35 7 "  
 5 " 57 16 "  
 10 " 109 31 "  
 15 " 158 47 "  
 30 " 276 87 "

Rock Pressure 309-18 lbs. in

Taken Apr. 2-1919 / Apr. 10-1919  
 By

WELL TUBED AND PACKED. Apr. 10 1919.

VIZ:- 139 No. 2882 ft. of 3"  
 1-6" X 3" Larkin Anchor Packer.  
 8 No. 144 ft. 3" anchor.  
 1-3" R. & L.

FIRST PRESSURE TEST IN 3" TUBING  
 6 7/8 X 3"  
 30 Sec. 19 lbs.  
 1 Min. 35 "  
 2 " 60 "  
 5 " 134 "  
 10 " 265 "  
 15 " 242 "  
 30 " 469 "  
 40 500 "  
 Rock Pressure 635-18 lbs. in  
 Taken Apr. 10-1919 19  
 By

REMARKS

MATERIAL FOR THIS WELL RECEIVED FROM FOLLOWING SOURCES:

12108 ft. Lumber new @ 35.  
 500+ Nails  
 1 set Rig irons new  
 1 set Rig timbers new

\$423.72 A. J. Risdelle  
 Stock  
 \$100.00 Silas Shreves