

1 2 3

Latitude 39° 40'

P

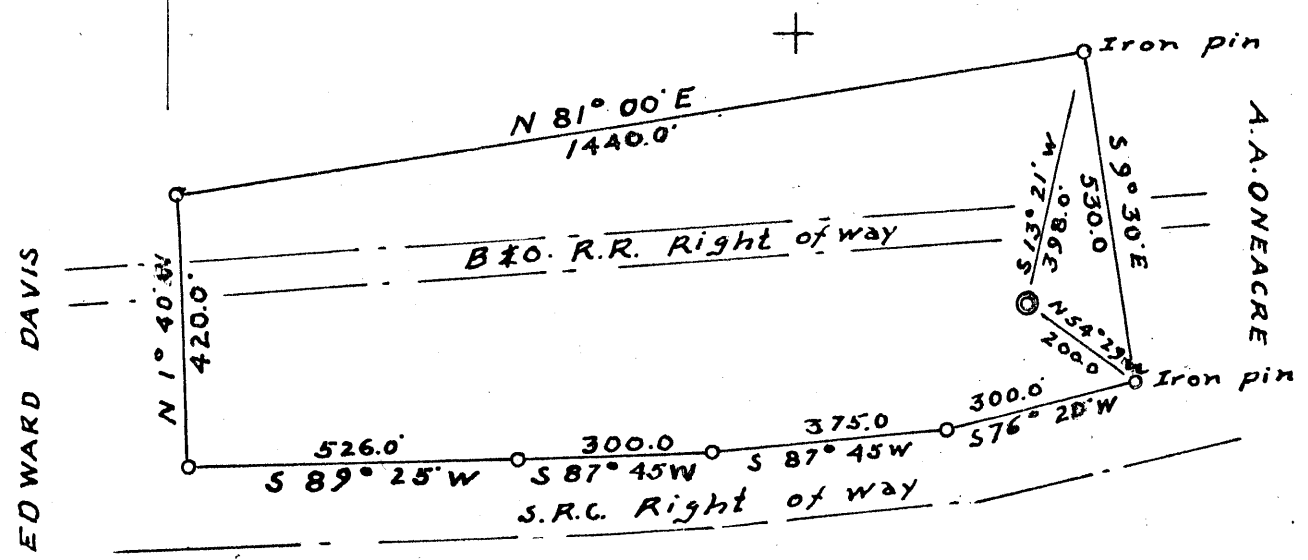


1  
2  
3

Longitude 80° 50'

OHIO RIVER

3.625  
2.920



P. W. JOHNSON

New Location

Drill Deeper

Abandonment

Company LONE TREE OIL & GAS

Address NEW MARTINSVILLE W.Va.

Farm STEPHAN GISCO

Tract \_\_\_\_\_ Acres 13 Lease No. ONE

Well (Farm) No. ONE Serial No. \_\_\_\_\_

Elevation (Spirit Level) 638.0

Quadrangle NEW MARTINSVILLE - C

County WETZEL District MAGNOLIA

Engineer G. L. McEntire

Engineer's Registration No. 1187

File No. \_\_\_\_\_ Drawing No. \_\_\_\_\_

Date June 23, 1957 Scale 1" = 300'

STATE OF WEST VIRGINIA  
DEPARTMENT OF MINES  
OIL AND GAS DIVISION  
CHARLESTON

WELL LOCATION MAP  
FILE NO. Wet-454

+ Denotes location of well on United States Topographic Maps, scale 1 to 62,500, latitude and longitude lines being represented by border lines as shown.

- Denotes one inch spaces on border line of original tracing.

5-0 0



STATE OF WEST VIRGINIA  
DEPARTMENT OF MINES  
OIL AND GAS DIVISION 9

*New Martinsville*

WELL RECORD

Permit No. WET-454

Oil or Gas Well DRY  
(KIND)

Company LONE TREE OIL AND GAS COMPANY  
Address NEW MARTINSVILLE, WEST VIRGINIA  
Farm S PEPHEN GISCO Acres 16  
Location (waters) OHIO RIVER  
Well No. I Elev. 638  
District magnolia County WETZEL  
The surface of tract is owned in fee by S PEPHEN GISCO  
NEW MARTINSVILLE Address WEST VIRGINIA  
Mineral rights are owned by SAME  
Address \_\_\_\_\_  
Drilling commenced JUNE 1957  
Drilling completed AUGUST 1957  
Date Shot \_\_\_\_\_ From \_\_\_\_\_ To \_\_\_\_\_  
With \_\_\_\_\_  
Open Flow \_\_\_\_\_ /10ths Water in \_\_\_\_\_ Inch  
\_\_\_\_\_ /10ths Merc. in \_\_\_\_\_ Inch  
Volume \_\_\_\_\_ Cu. Ft.  
Rock Pressure \_\_\_\_\_ lbs. \_\_\_\_\_ hrs.  
Oil \_\_\_\_\_ bbls., 1st 24 hrs.  
Fresh water 42' feet \_\_\_\_\_ feet  
Salt water \_\_\_\_\_ feet \_\_\_\_\_ feet

Casing and Tubing	Used in Drilling	Left in Well	Packers
Size			
16			Kind of Packer
18	23'		
10			Size of
8 1/4	285'		
6 3/8			Depth set
5 3/16			
3			Perf. top
2			Perf. bottom
Liners Used			Perf. top
			Perf. bottom

CASING CEMENTED \_\_\_\_\_ SIZE \_\_\_\_\_ No. Ft. \_\_\_\_\_ Date \_\_\_\_\_

COAL WAS ENCOUNTERED AT 274 FEET \_\_\_\_\_ INCHES  
\_\_\_\_\_ FEET \_\_\_\_\_ INCHES \_\_\_\_\_ FEET \_\_\_\_\_ INCHES  
\_\_\_\_\_ FEET \_\_\_\_\_ INCHES \_\_\_\_\_ FEET \_\_\_\_\_ INCHES

Formation	Color	Hard or Soft	Top	Bottom	Oil, Gas or Water	Depth Found	Remarks
SOIL			0	20			
LIME			20	30			
SLATE	PINK		30	40			
LIME			40	46			
SLATE	PINK		46	55			
LIME			55	70			
SAND			70	75			
LIME			75	85			
SLATE	RED		85	100			
LIME			100	110			
SLATE	PINK		110	120			
SAND		HARD	120	124			
SLATE			124	152			
LIME		HARD	152	157			
SLATE	RED		157	205			
LIME		HARD	205	215			
SHELLS			215	257			
SLATE	RED		257	290			
LIME			290	300			
SLATE	GRAY	SOFT	300	367			
SLATE	BROWN	SOFT	367	374			
COAL			374	376			
SLATE	WHITE	SOFT	376	386			
SLATE	BROWN	HARD	386	436			
LIME	BROWN	HARD	436	460			
SLATE	BLACK		460	470			
LIME		HARD	470	480			
SLATE	PINK	SOFT	480	505			
SLATE	RED	SOFT	505	611			
SLATE	GRAY		611	657			
SLATE	BLACK	SOFT	657	667			

Formation	Color	Hard or Soft	Top 9	Bottom	Oil, Gas or Water	Depth Found	Remarks
SLATE	GRAY	MEDIUM	667	690			
SLATE	PINK	MEDIUM	690	754			
LIME			754	758			
SANDY SLATE	BLACK	HARD	758	760			
SLATE	BROWN	SOFT	<del>760</del>	765			
SLATE	RED	SOFT	<del>765</del>	808			
sandy SLATE	BROWN	HARD	808	820	T.D.		

Date OCTOBER 9 1957., 19\_\_

APPROVED LONE TREE OIL AND GAS COMPANY, Owner

By Carl S. Moore  
(Title) AGENT