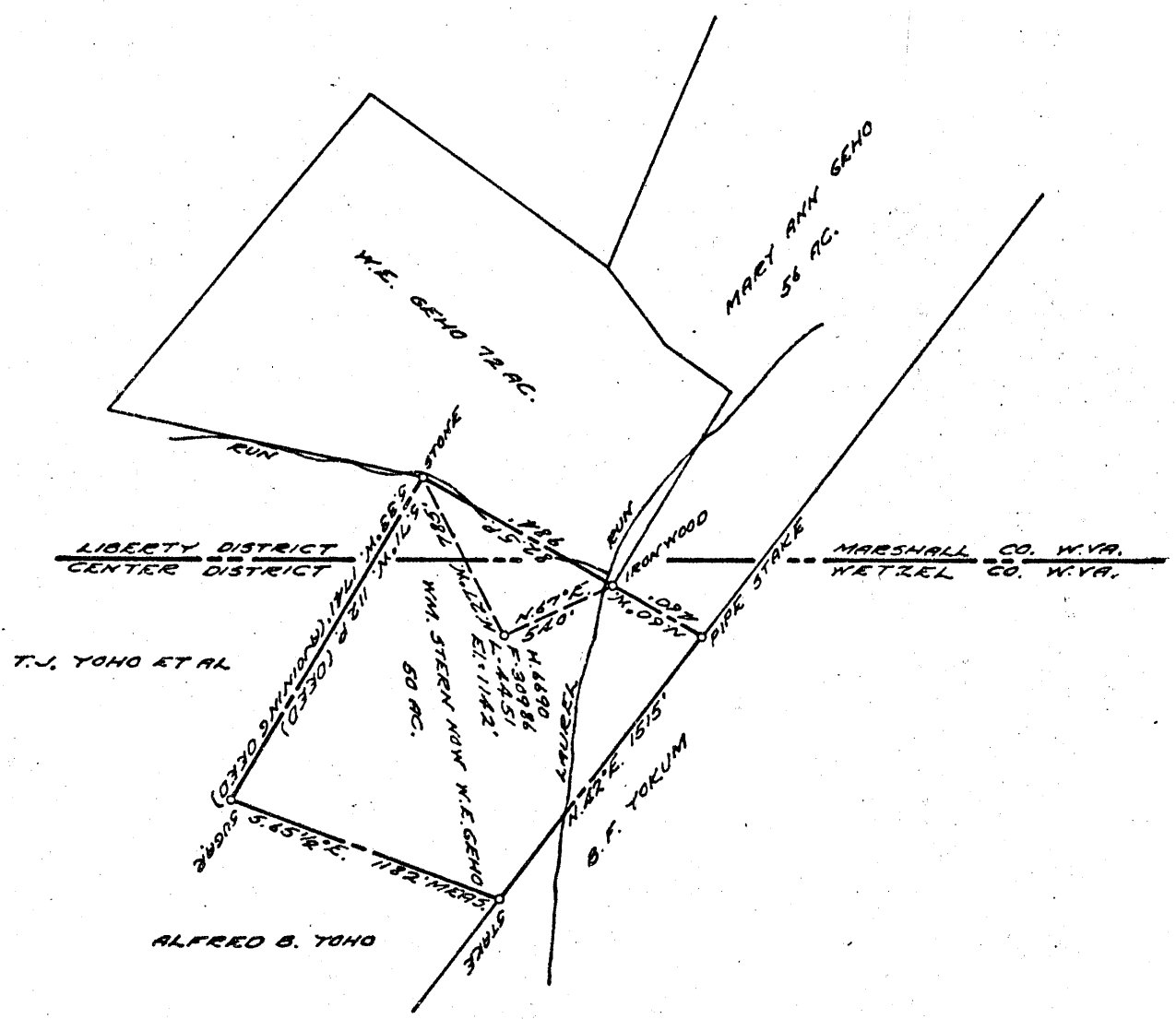


2.032  
2.60W



COAL OWNED BY \_\_\_\_\_  
 REDRILL FOR STORAGE

NEW LOCATION.....

DRILL DEEPER.....

ABANDONMENT.....

295

COMPANY THE MANUFACTURERS LIGHT & HEAT

ADDRESS 800 UNION TRUST BLDG., PGH. PA.

FARM W.E. GEHO

TRACT \_\_\_\_\_ ACRES 50 LEASE No. 26567

WELL (FARM) No. 1 SERIAL No. AA51

ELEVATION (SPIRIT LEVEL) 1142'

QUADRANGLE LITTLETON - NC

COUNTY WETZEL DISTRICT CENTER

ENGINEER Thomas E. Virgin - M.

ENGINEER'S REGISTRATION No. 1503

FILE No. \_\_\_\_\_ DRAWING No. Y-15-583

DATE 21 MAY 1957 SCALE 1" = 800'

STATE OF WEST VIRGINIA  
 DEPARTMENT OF MINES  
 OIL AND GAS DIVISION  
 CHARLESTON

**WELL LOCATION MAP**

FILE No. Wet-450-Redrill

+ DENOTES LOCATION OF WELL ON UNITED STATES TOPOGRAPHIC MAPS, SCALE 1 TO 62,500. LATITUDE AND LONGITUDE LINES BEING REPRESENTED BY BORDER LINES AS SHOWN.

- DENOTES ONE INCH SPACES ON BORDER LINE OF ORIGINAL TRACING.



STATE OF WEST VIRGINIA  
DEPARTMENT OF MINES  
OIL AND GAS DIVISION

Quadrangle Littleton

WELL RECORD

Permit No. WET-450-R

Oil or Gas Well GAS  
(KIND)

Company The Manufacturers Light and Heat Company  
Address 800 Union Trust Building  
Pittsburgh 19, Pennsylvania  
Farm W. E. Geho Acres 50  
Location (waters) \_\_\_\_\_  
Well No. 4451 Elev. 1142'  
District Center County Wetzel  
The surface of tract is owned in fee by \_\_\_\_\_  
Address \_\_\_\_\_  
Mineral rights are owned by \_\_\_\_\_  
Address \_\_\_\_\_  
Drilling commenced October 15, 1957  
Drilling completed December 28, 1957  
Date Shot From \_\_\_\_\_ To \_\_\_\_\_  
With \_\_\_\_\_  
Open Flow /10ths Water in \_\_\_\_\_ Inch  
/10ths Merc. in \_\_\_\_\_ Inch  
Volume \_\_\_\_\_ Cu. Ft.  
Rock Pressure \_\_\_\_\_ lbs. \_\_\_\_\_ hrs.  
Oil \_\_\_\_\_ bbls., 1st 24 hrs.  
Fresh water \_\_\_\_\_ feet \_\_\_\_\_ feet  
Salt water \_\_\_\_\_ feet \_\_\_\_\_ feet

Casing and Tubing	Used in Drilling	Left in Well	Packers
Size			Kind of Packer
16			
13			
10 "		370	Size of
8 1/4 "		1397	
8 5/8 7"		2034	Depth set
5 3/16			
3			Perf. top
2			Perf. bottom
Liners Used			Perf. top
			Perf. bottom

CASING CEMENTED \_\_\_\_\_ SIZE \_\_\_\_\_ No. Ft. \_\_\_\_\_ Date \_\_\_\_\_  
COAL WAS ENCOUNTERED AT \_\_\_\_\_ FEET \_\_\_\_\_ INCHES  
\_\_\_\_\_ FEET \_\_\_\_\_ INCHES FEET \_\_\_\_\_ INCHES  
\_\_\_\_\_ FEET \_\_\_\_\_ INCHES FEET \_\_\_\_\_ INCHES

Formation	Color	Hardness THICKNESS	Top	Bottom	Oil, Gas or Water	Depth Found	Remarks
Schlumberger Well Survey							
Pittsburgh Coal		6	877	883			All pipe measured over threads. Run 370' of 10 3/4" Casing, SM.H40, 32# on a steel shoe. Not cemented. Run 20 bags of Aquagel at 1337' to hold back cave. Run 1397' of 8 5/8" Casing, SM. J. 24# on a steel shoe. Cemented with 380 bags of cement, 14.2 pounds per gallon. No return of cement at the surface. Run 2034' of 7" Casing, Sm. J. 20# on a steel shoe set at 2020'. Cemented with 300 bags cement, 15# per gallon. Good return of cement at the surface. Hole was cleaned out to depth of 2464' and plugged back with 40 bags cement to total depth of 2270' 10" Shoe set at 367' 8" Shoe set at 1387'
Maxton Sand				1882			
Big Injun Sand				2280			
Total Depth				2270			
7" Shoe set at							
			1142 877 265				

