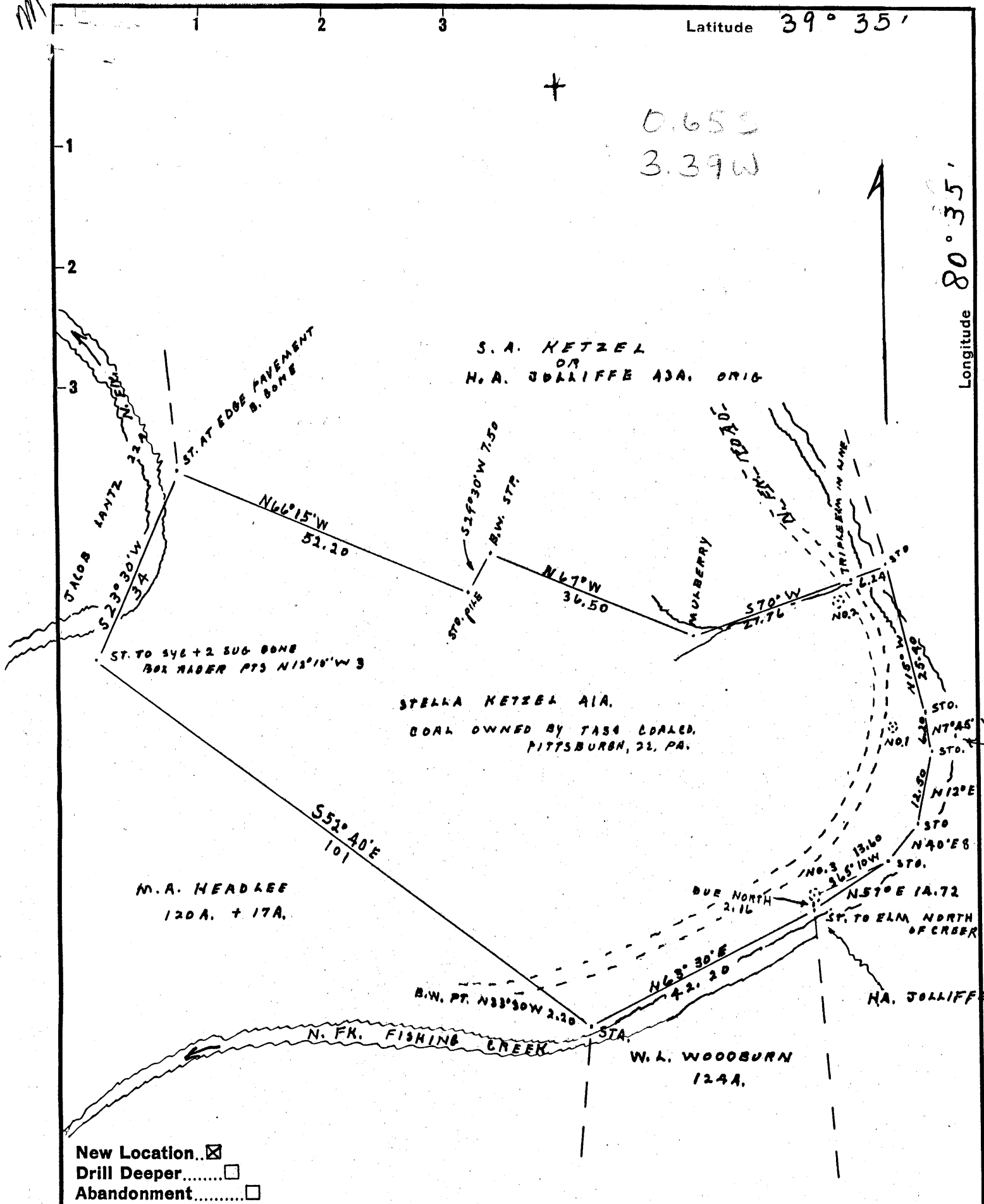


Latitude 39° 35'

Longitude 80° 35'

0.655  
3.39W



New Location...   
 Drill Deeper.....   
 Abandonment.....

A. B. LOWMYER AGT.  
 Company PINE RUN DEVELOPMENT CO.  
 Address MIDDLEBORNE, W.VA.  
 Farm STELLA. A. KETZEL  
 Tract 1 Acres 41 Lease No. \_\_\_\_\_  
 Well (Farm) No. 3 Serial No. \_\_\_\_\_  
 Elevation (Spirit Level) 761.70  
 Quadrangle LITTLETON  
 County WETZEL District GRANT  
 Engineer J. M. Cochran  
 Engineer's Registration No. CO. SURVEYOR  
 File No. \_\_\_\_\_ Drawing No. \_\_\_\_\_  
 Date 5-21-56 Scale 1" = 20 ROD

STATE OF WEST VIRGINIA  
 DEPARTMENT OF MINES  
 OIL AND GAS DIVISION  
 CHARLESTON

**WELL LOCATION MAP**  
 FILE NO. Wet-431

+ Denotes location of well on United States Topographic Maps, scale 1 to 62,500, latitude and longitude lines being represented by border lines as shown.

- Denotes one inch spaces on border line of original tracing.



STATE OF WEST VIRGINIA  
DEPARTMENT OF MINES  
OIL AND GAS DIVISION

*Littleton*

WELL RECORD

Permit No. Well 431

Oil or Gas Well GAS

Company PINE RUN DEVELOPMENT CO.  
Address Middlebourne, W. Va.  
Farm Stella Ketzal Acres 11  
Location (waters) North Fork of Fishing Creek  
Well No. 3 Elev. 761.7'  
District Grant County Wetzel  
The surface of tract is owned in fee by Stella Ketzal  
Address Pine Grove, W. Va.  
Mineral rights are owned by Same  
Address ""  
Drilling commenced June 6, 1956  
Drilling completed June 17, 1956  
Date Shot Not Shot From          To           
With           
Open Flow 34 /10ths Water in One Inch  
         /10ths Merc. in          Inch  
Volume 60,000 Cu. Ft.  
Rock Pressure Not taken lbs.          hrs.  
Oil          bbls., 1st 24 hrs.  
Fresh water 30 feet 80 feet  
Salt water          feet          feet

Casing and Tubing	Used in Drilling	Left in Well	Packers
Size			Kind of Packer
16			
18			
10			Size of
8 1/4	22 ft.	22	6"
6 5/8	100	100	Depth set
5 3/16			368'
3			Perf. top
2			Perf. bottom <u>485'</u>
Liners Used	109 ft 5"	109	Perf. top
			Perf. bottom

2" Tubing  
Casing CEMENTED SIZE No. Ft. 40 Date  
June 18, 1956

COAL WAS ENCOUNTERED AT 372' FEET 12 INCHES  
481' FEET 60 INCHES FEET INCHES  
FEET INCHES FEET INCHES

Formation	Color	Hard or Soft	Top	Bottom	Oil, Gas or Water	Depth Found	Remarks
Gravel			00	25			
Sand			25	40			Water
Slate and shell			40	80			
Sand			80	92			"
Slate & Shell			92	185			
Redrock			185	190			
Slate			190	215			
Lime			215	220			
Slate			220	245			
Lime			245	252			
Redrock			252	257			
Lime			257	275			
Redrock			275	295			
Lime			295	355			
Slate			355	362			
Lime			362	369			
Slate			369	374			
Coal			274	375			Little Gas
Slate			375	392			
Lime			392	405			
Slate & Shell			405	462			
Lime			462	468			
Slate	White		468	481			
Coal			481	486			
Sand			486	490	TOTAL DEPTH		

