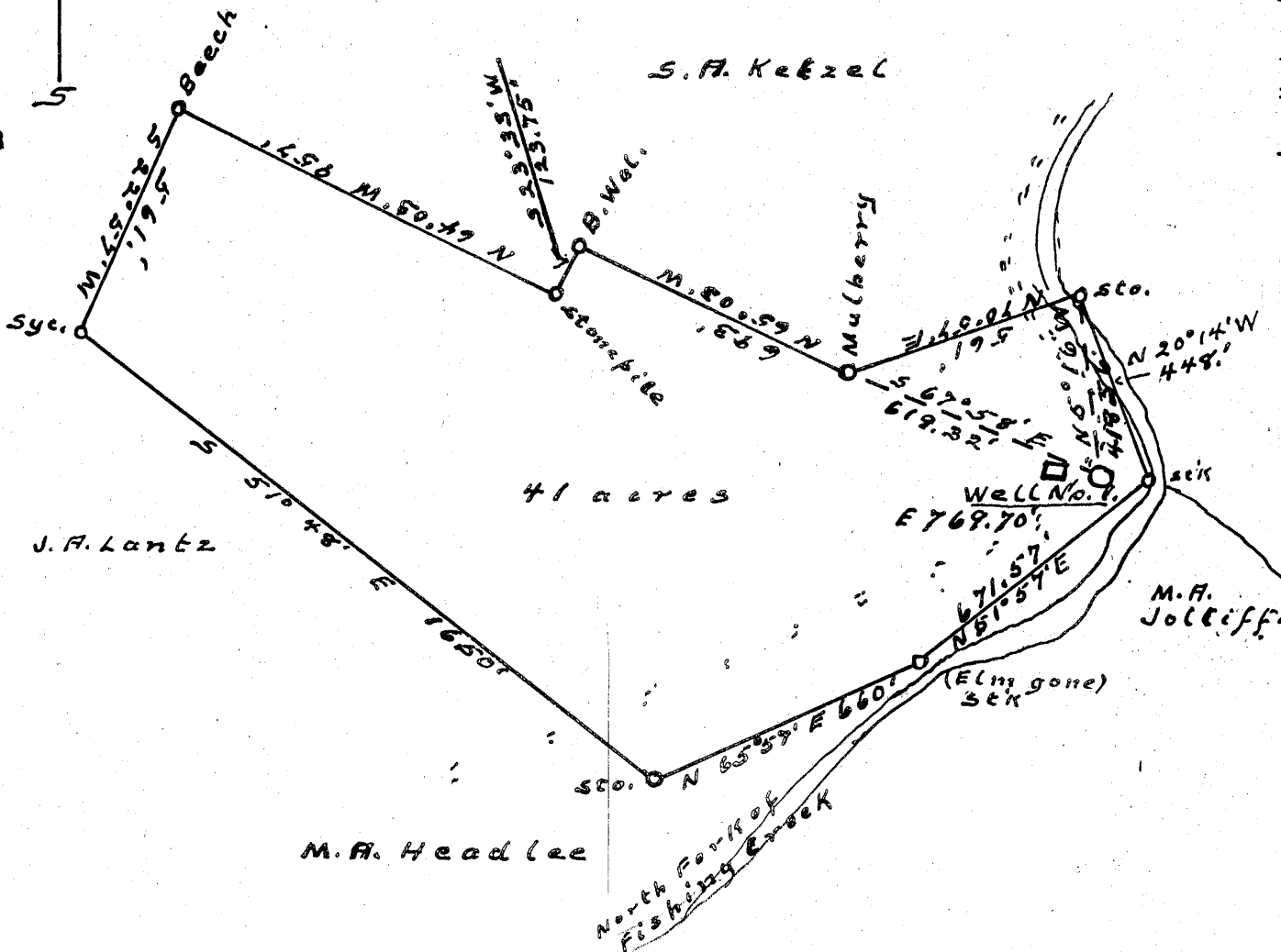


Latitude 39° 35'

Longitude 80° 35'

0.56 S

3.35 W



41 acres

Coal Owner:-  
 Tasa Coal Company  
 725 Liberty Avenue  
 Pittsburgh 22, Pa.

New Location...   
 Drill Deeper.....   
 Abandonment.....

Company Pine Run Development Co.

Address F. B. Lowmyer, Asst. Middlebourne, W. Va.

Farm Stella A. Ketzal

Tract 1 Acres 41 Lease No. \_\_\_\_\_

Well (Farm) No. 1 Serial No. \_\_\_\_\_

Elevation (Spirit Level) 769.70'

Quadrangle Littleton

County Wetzel District Grant

Engineer J. M. Cochran County Surveyor

Engineer's Registration No. \_\_\_\_\_

File No. 0+6 Drawing No. \_\_\_\_\_

Date 3-20-56 Scale 1" = 400'

STATE OF WEST VIRGINIA  
 DEPARTMENT OF MINES  
 OIL AND GAS DIVISION  
 CHARLESTON

### WELL LOCATION MAP

FILE NO. Wet-428

+ Denotes location of well on United States Topographic Maps, scale 1 to 62,500, latitude and longitude lines being represented by border lines as shown.

- Denotes one inch spaces on border line of original tracing.

WEST VIRGINIA DEPARTMENT OF MINES  
OIL AND GAS DIVISION

WELL RECORD

*Ricketts*  
Permit No. *met 428*

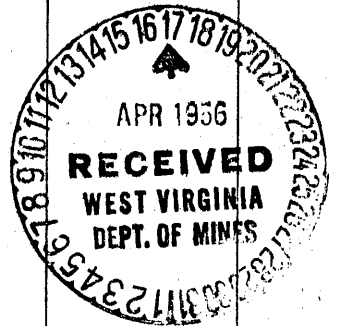
Oil or Gas Well Gas  
(Kind)

Company Pine Run Development Co.  
Address Middlebourne, W. Va.  
Farm Stella Ketsel Acres 43  
Location (waters) North Fork Creek  
Well No. 1 Elev. 769.7'  
District Grant County Netzel  
The surface of tract is owned in fee by Stella Ketsel  
Address Pine Grove, W. Va.  
Mineral rights are owned by Same person  
Address \_\_\_\_\_  
Drilling commenced March 25, 1956  
Drilling completed April 7, "  
Date shot Not shot Depth of shot \_\_\_\_\_  
Open Flow 18/10ths Water in 1 inch inch  
/10ths Merc. in \_\_\_\_\_ inch  
Volume 34000 Cu. Ft.  
Rock Pressure \_\_\_\_\_ lbs. \_\_\_\_\_ hrs.  
Oil \_\_\_\_\_ bbls., 1st 24 hrs.  
Fresh water at 35 feet feet 125 feet  
Salt water None feet None feet

Casing and Tubing	Used in Drilling	Left in Well	Packers
Size			
16			Kind of Packer
13			
10			Size of
8 1/4	15 ft.	15 ft	
6 5/8	87	67	Depth set
5 3/16	470	470	
3			Perf. top
2			Perf. bottom
Liners Used			Perf. top
			Perf. bottom

CASING CEMENTED \_\_\_\_\_ SIZE \_\_\_\_\_ No. FT. \_\_\_\_\_  
COAL WAS ENCOUNTERED AT 385 FEET \_\_\_\_\_ INCHES  
491 FEET \_\_\_\_\_ INCHES FEET \_\_\_\_\_ INCHES  
FEET \_\_\_\_\_ INCHES FEET \_\_\_\_\_ INCHES

Formation	Color	Hard or Soft	Top	Bottom	Oil Gas, or Water	Depth Found	Remarks
Gravel			00	14 ft			
Slate			14	28 "			
Sand			28	35 "	Water		
Slate & Shell			35	120 "			
Sand			120	125 "	Little water		
Slate & Lime			125	155 "			
Sand			155	165 "			
Slate			165	176 "			
Sand			176	181 "			
Redrock			181	195 "			
Sand			195	205 "			
Redrock			205	210 "			
Sand			210	225 "			
Redrock			225	238 "			
Sand			238	255 "			
Redrock			255	268 "			
Lime			268	285 "			
Slate & Lime			285	295 "			
Redrock			295	310 "			
Lime			310	343 "			
Slate & Lime			343	351 "			
Sand			351	380 "			
Slate			380	385 "			
Coal			385	387 "	Little Gas		
Slate			387	400 "			
Lime			400	440 "			
Sand			440	445 "			
Shale			445	460 "			
Lime			460	465 "			
Slate			465	468 "			
Lime			468	479 "	Gas hit soon Blowed out		
Slate			479	491 "			
Coal			491	498 "			
Slate			498	500 "			
TOTAL DEPTH 500							



*Gas hit soon Blowed out*