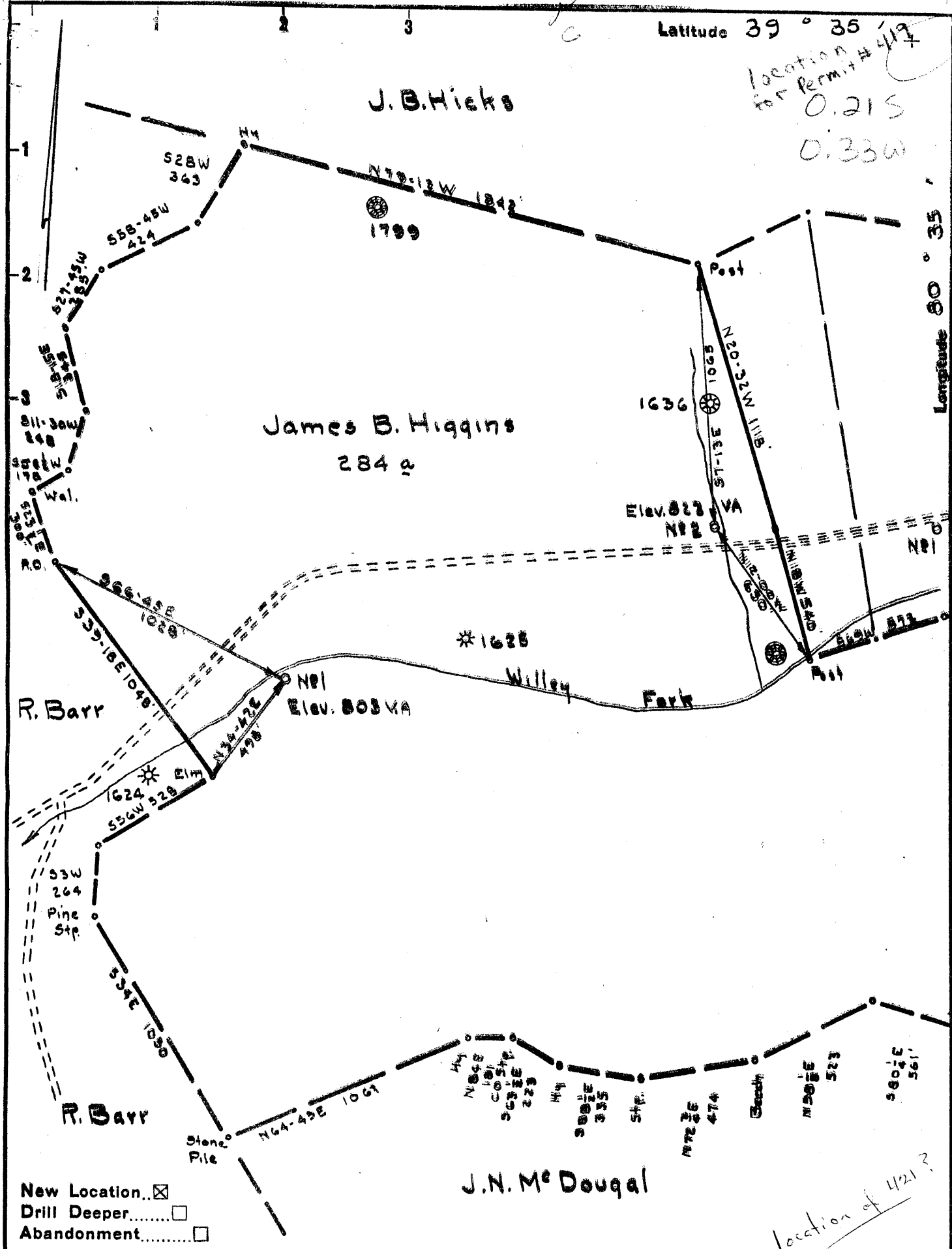


Latitude 39° 35' 41.9"

Location for Permit # 419
0.215
0.330



- New Location...
- Drill Deeper.....
- Abandonment.....

location of 421?

Company P.C. McKenzie Co.
 Address Pittsburgh Pa.
 Farm James B. Higgins
 Tract _____ Acres 300 Lease No. _____
 Well (Farm) No. 1 & 2 Serial No. _____
 Elevation (Spirit Level) As Shown
 Quadrangle Littleton S.E.
 County Wetzel District Grant
 Engineer James D. Jeffries
 Engineer's Registration No. 1084
 File No. 182/148 Drawing No. _____
 Date 8-31-55 Scale 1" = 500'

STATE OF WEST VIRGINIA
 DEPARTMENT OF MINES
 OIL AND GAS DIVISION
 CHARLESTON

WELL LOCATION MAP

FILE NO. ~~Wet-419-#1~~
Wet-421-#2

+ Denotes location of well on United States Topographic Maps, scale 1 to 62,500, latitude and longitude lines being represented by border lines as shown.
 - Denotes one inch spaces on border line of original tracing.

Latitude

39 37 30

8035

Longitude

OGIS
7.5' loc
Kla
5/16/94

Topo Location

7.5' Loc. 2.845 15' Loc. 5.725
0.01W (calc.) 0.01W

Company _____

Farm _____

15' Quad Littleton C
(sec.) _____

7.5' Quad Big Run

District Grant

WELL LOCATION PLAT

County 103 Permit 421



STATE OF WEST VIRGINIA
DEPARTMENT OF MINES
OIL AND GAS DIVISION /7

Quadrangle Littleton, S. E.

WELL RECORD

Permit No. WET-421

Oil or Gas Well Dry Hole
(KIND)

Company P. C. McKenzie Company
Address P. O. Box 10396, Pittsburgh 34, Pa.
Farm James B. Higgins Acres 300
Location (waters) Big Run
Well No. 2 Elev. 823'
District Grant County Wetzel

The surface of tract is owned in fee by James O. Higgins
Address Pine Grove, W.Va. 8 1/4

Mineral rights are owned by W. L. Higgins, atty. in fact
for Bessie W. Booth, et al Address Coburn, W. Va.

Drilling commenced October 29, 1955
Drilling completed November 5, 1955

Date Shot 11/8/55 From 506' To 510'
With 15 sticks - 60% dynamite

Open Flow /10ths Water in see below Inch
/10ths Merc. in Inch

Volume see below Cu. Ft.

Rock Pressure 65 lbs. 48 hrs.

Oil bbls., 1st 24 hrs.

Fresh water 58 feet

Salt water feet

Casing and Tubing	Used in Drilling	Left in Well	Packers
Size			Kind of Packer
16			
13			
10			Size of
8 1/4			
6 3/8	215'	none	Depth set
5 3/16	485'	485'	
3			Perf. top
2			Perf. bottom
Liners Used			Perf. top
			Perf. bottom

CASING CEMENTED _____ SIZE _____ No. Ft. _____ Date _____

COAL WAS ENCOUNTERED AT 34 FEET INCHES
256 FEET INCHES 405 FEET INCHES
FEET INCHES FEET INCHES

Formation	Color	Hard or Soft	Top	Bottom	Oil, Gas or Water	Depth Found	Remarks
Clay			0	18			
Rock			18	22			
Slate			22	34			
Lime			34	51	Show Coal at 34'		
Sand			51	62	Water at 58'		
Slate			62	74			
Lime			74	93			
Slate			93	97			
Sand			97	114			
Slate			114	132			
Sand			132	161			
Slate			161	170			
Lime		Gritty	170	190			
Slate			190	205			
Rock	Red		205	210			
Slate			210	220			
Lime			220	242			
Slate			242	260	Show Coal at 256'		
Lime			260	281			
Slate & Lime			281	305			
Lime		Hard	305	315			
Lime		Broken	315	325			
Slate			325	338			
Lime			338	400			
Slate			400	405			
Coal - Mapletown			405	406			
Slate			406	410			
Lime			410	418			
Slate			418	423			
Lime			423	430			
Slate & Lime Shells			430	442			
Lime			442	450			
Slate			450	455			
Lime			455	460			
Lime		Broken	460	489			
Slate	Black		489	494			

Formation	Color	Hard or Soft	Top ¹⁷	Bottom	Oil, Gas or Water	Depth Found	Remarks
Lime			494	498			
Slate			498	506 1/2			
Coal- Pittsburgh			506 1/2	509 1/2			
Lime			509 1/2	521			
		Total Depth		521'			
		Open Flow:					
		Before Shot - 6/10 w 3/4"		= 10,000			
		After Shot - 8/10 2 3/4"		= 11,500			

Date....., 19.....

APPROVED....., Owner

By.....
(Title)