

COAL OWNED BY Miss Marion Franklin Byers
 Reopened * (Everett Moore)

NEW LOCATION.....
 DRILL DEEPER.....
 ABANDONMENT.....

COMPANY The Manufacturers Light & Heat
 ADDRESS 800 Union Trust Bldg. Pgh. Pa.
 FARM George & Mary Foland
 TRACT 1 ACRES 44.62 LEASE No. 26465
 WELL (FARM) No. 1 SERIAL No. 1775
 ELEVATION (SPIRIT LEVEL) 1273'
 QUADRANGLE Littleton
 COUNTY Wetzel DISTRICT Proctor
 ENGINEER John A. Landa
 ENGINEER'S REGISTRATION No. _____
 FILE No. _____ DRAWING No. Y-13-876
 DATE 17 Aug. 1953 SCALE 1" = 800'

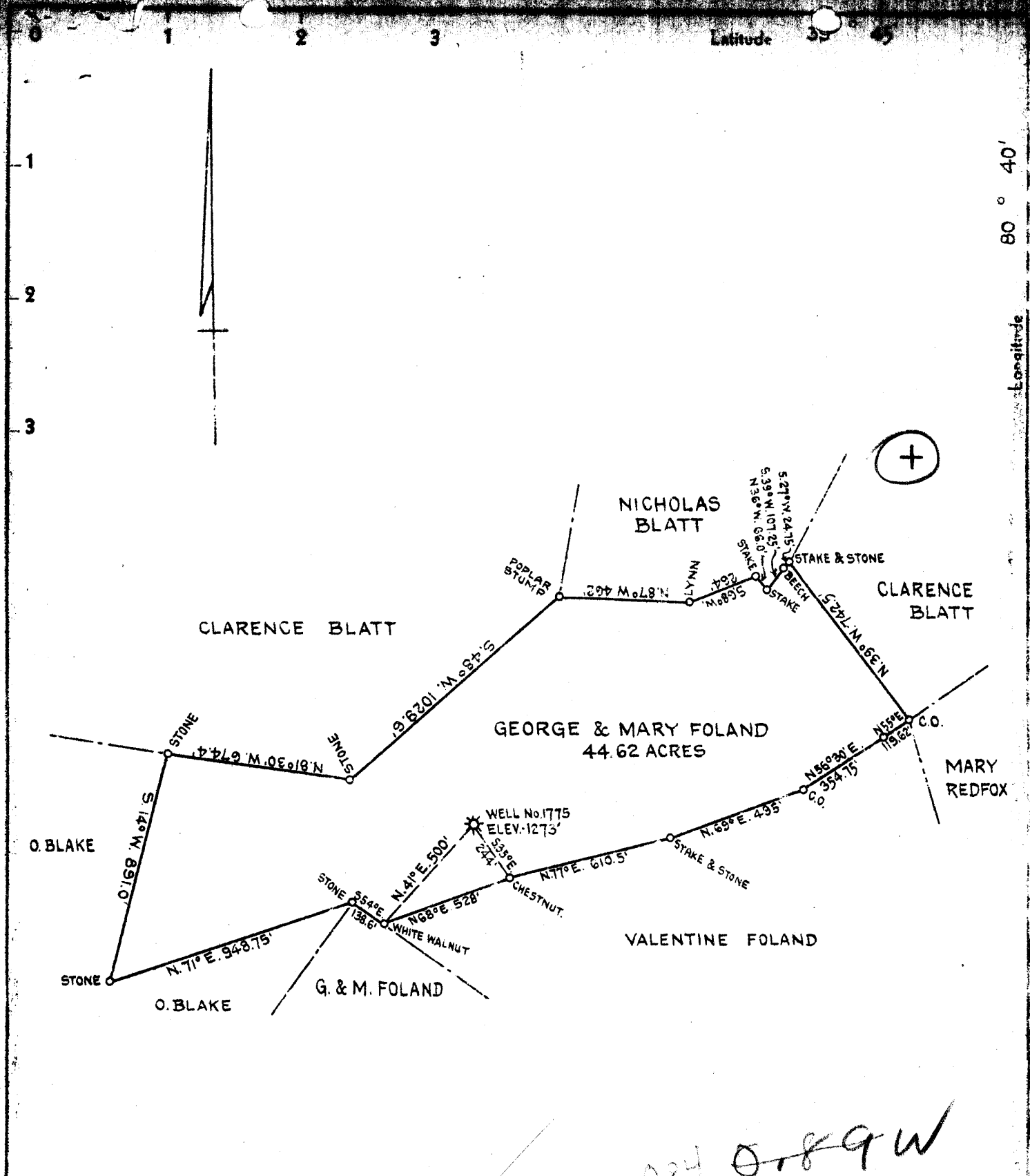
STATE OF WEST VIRGINIA
 DEPARTMENT OF MINES
 OIL AND GAS DIVISION
 CHARLESTON

WELL LOCATION MAP

FILE No. Wet-387-Redrill

+ DENOTES LOCATION OF WELL ON UNITED STATES TOPOGRAPHIC MAPS, SCALE 1 TO 62,500. LATITUDE AND LONGITUDE LINES BEING REPRESENTED BY BORDER LINES AS SHOWN.

- DENOTES ONE INCH SPACES ON BORDER LINE OF ORIGINAL TRACING.



0.84 0.89 W
3.35

COAL OWNED BY MISS BEATRICE YEATER - UNOPERATED

New Locations
 Drill Deeper
 Abandonment

AUG 30 1943

Y1W

Company THE MANUFACTURERS LIGHT & HEAT CO.
 Address 800-UNION TRUST BLDG. PITTSBURGH PA.,
 Farm GEORGE & MARY FOLAND
 Tract 1 Acres 44.62 Lease No. 4918
 Well (Farm) No. 1 Serial No. 1775
 Elevation (Spirit Level) 1273'
 Quadrangle LITTLETON N.W. QUARTER
 County WETZEL District PROCTOR
 Engineer *Porter J. Cook*
 Engineer's Registration No.
 File No. Drawing No. Y-10-931
 Date AUGUST 10, 1943 Scale 1" = 500'

STATE OF WEST VIRGINIA
 DEPARTMENT OF MINES
 OIL AND GAS DIVISION
 CHARLESTON

WELL LOCATION MAP

File No. **WET-451-A**

now 387

- Denotes location of well on United States Topographic Maps, scale 1 to 62,500, latitude and longitude lines being represented by border lines as shown.

- Denotes one inch spaces on border line of original tracing.



STATE OF WEST VIRGINIA
DEPARTMENT OF MINES
OIL AND GAS DIVISION

906

WELL RECORD

Permit No. Drilled in 1911
by the Wheeling Natural Gas Co.

Oil or Gas Well Gas
(KIND)

Company The Manufacturers Light & Heat Co.
Address 800 Union Trust Bldg., Pittsburgh, Pa.
Farm George Foland Acres 83
Location (waters) _____
Well No. 1 - 1775 Elev. 1273 ft.
District Proctor County Wetzel
The surface of tract is owned in fee by Valentine Foland
Address Besse, W. Va.
Mineral rights are owned by The Manufacturers Light & Heat Company Address Pittsburgh.
Drilling commenced 10/5/14
Drilling completed 12/12/14
Date Shot From _____ To _____
With _____

Casing and Tubing	Used in Drilling	Left in Well	Packers
Size			
16			Kind of Packer
18	302' 9"	302' 9"	
10	1388' 9"		Size of
8 1/4	1820'	1820'	
6 1/2	2077'	2077'	Depth set
5 3/16			
3			Perf. top
2			Perf. bottom
Liners Used			Perf. top
			Perf. bottom

Open Flow 11/10ths Water in _____ 2 Inch
_____ /10ths Merc. in _____ Inch
Volume 160,000 Cu. Ft.
Rock Pressure 15 lbs. 6 5/8" hrs.
Oil _____ bbls., 1st 24 hrs.
Fresh water _____ feet _____ feet
Salt water _____ feet _____ feet

CASING CEMENTED _____ SIZE _____ No. Ft. _____ Date _____

COAL WAS ENCOUNTERED AT 635 FEET 36 INCHES
994 FEET 72 INCHES 1090 FEET 96 INCHES
1710 FEET 36 INCHES _____ FEET _____ INCHES

Formation	Color	Hard or Soft	Top	Bottom	Oil, Gas or Water	Depth Found	Remarks
Clay & Slate			0	45			
Sand			45	60			Little water at 50'
Slate			60	160			
Red Rock			160	400			
Slate & Lime			400	420			
Sand			420	635			
Waynesburg Coal			635	638			
Lime & Slate			638	994			
Mapletown Coal			994	1000			
Lime & Slate			1000	1090			
Pittsburgh Coal			1090	1098			
Slate			1098	1110			
Sand			1110	1140			
Slate			1140	1170			
Murphy Sand			1170	1205			
Lime & Slate			1205	1250			
Red Rock			1250	1300			
Slate & Lime			1300	1400			
Red Rock			1400	1410			
Lime & Slate			1410	1435			
Little Dunkard			1435	1485			
Red Rock			1485	1505			
Sand			1505	1515			
Slate			1515	1530			
Big Dunkard			1530	1540			
Slate			1540	1585			
Sand			1585	1630			
Slate			1630	1640			
Lime			1640	1655			
Slate			1655	1675			
Sand			1675	1710			
Coal			1710	1713			
Lime & Sand			1713	1750			
Slate			1750	1820			
Salt Sand			1820	1850			No water in Salt Sand

AUG 1913
DEPARTMENT OF MINES
OIL AND GAS DIVISION

Formation	Color	Hard or Soft	Top	Bottom	Oil, Gas or Water	Depth Found	Remarks
Black Slate			1850	1865			
Slate & Sand			1865	1910			
Black Slate			1910	1940			
Slate & Sand			1940	2065			
Lime			2065	2071			
<i>Salt</i> Mason Sand			2071	2113	Gas 2104'		
Slate & Lime			2113	2144			
Total depth				2144			

Date August 10th, 1943

APPROVED THE MANUFACTURERS LIGHT & HEAT CO., Owner

By Harry H. Fowler
 Land Dept. (Title) Office Mgr.