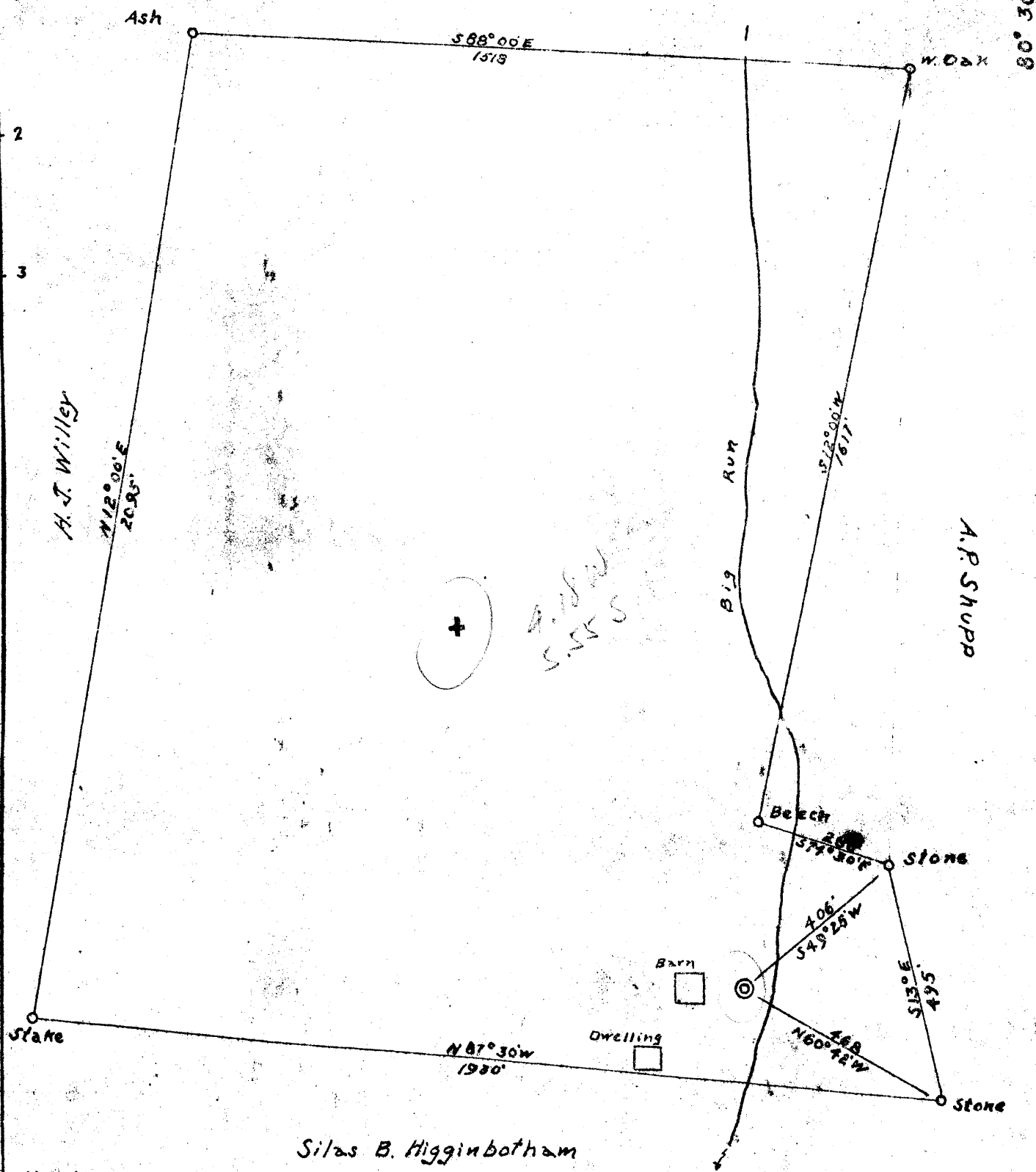


WM

39° 40'

William Swisher



Abandon
Drill Deeper
New Location X

Company	Foster McKinze Co
Address	545 William Penn Place Pittsburg, Pa.
Farm	Silas B. Higginbotham
Tract One	Acres 80 Lease No. 21160-3
Well (Farm) No	One Serial No.
Quadrangle	Littleton
County	Weizel
District	Grant
Elevation (spirit)	825
Engineers	George L. McElaine
Registration No	1187
Date	1/27/51 Scale 1" = 300'

STATE OF WEST VIRGINIA
DEPARTMENT OF MINES
OIL AND GAS DIVISION
CHARLESTON

WELL LOCATION MAP
FILE NO. Wet-371

+ Denotes location of well on United States Topographic Maps, scale 1 to 62,500. latitude and longitude lines being represented by border lines as shown.

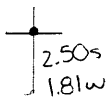
- Denotes one inch spaces on border line of original tracing.

6-6-15

39°37'30"

Latitude

Longitude



Topo Location

7.5' Loc. _____ 15' Loc. _____
 _____ (calc.) _____

Company Foster-McKinze Co

Farm Silas Higginbotham

15' Quad _____
(sec.)

7.5' Quad Big Run

District Grant

WELL LOCATION PLAT

County 103 **Permit** 371

WEST VIRGINIA DEPARTMENT OF MINES
OIL & GAS DIVISION
W E L L R E C O R D

Permit No. Wet-371

Gas Well

Littleton Quad.

Company Foster-McKenzie Co.
Address 545 Wm. Penn. Place, Pgh. 19, Pa.
Farm (Silas B. Higginbotham, et al)
now A.C. & L.J. Higginbotham etux
Well No. 1 Elev. 825'
District Grant
County Wetzel
Surface
Commenced 2/14/51
Completed 2/26/51
Volume 35,000 c.f.
Rock Pressure 140#
Fresh water at 41', 180' 250'

Casing & Tubing

10"	21	
8-5/8	207'9"	207'9"
6-5/8	374'4"	

Coal at 34' 12"

71	6	
153	show	
404	12	
501	108	

Band gravel	0	21
Rock	21	26
Slate	26	34
✓ Coal	34	35
Slate	35	40
Rock	40	47 hole full water
Slate	47	51
Sandstone	51	60
Slate	60	71
- Show coal	71	71-1/2
Slate dark	71-1/2	100
Slate white	100	110
Sand	110	147
- Slate	147	179 show coal 153
Sand	179	186 hole full water 180'
Shale	186	196
Red Lime	196	208
Slate	208	216
Lime	216	248
Sand	248	260 Little water
Lime	260	266
Slate	266	312
Lime	312	326
Slate	326	334
Lime	334	398 sh, gas 394'
Slate	398	404
- Coal mapletown	404	405
Slate	405	432
Lime	432	482
Slate grey	482	497
Slate dark soft	497	501
- Pgh. coal	501	510
Gas	500 to	511'
Total Depth	530'	

825
321
797

825
404
727

825
153
672

825
404
421

825
401
324