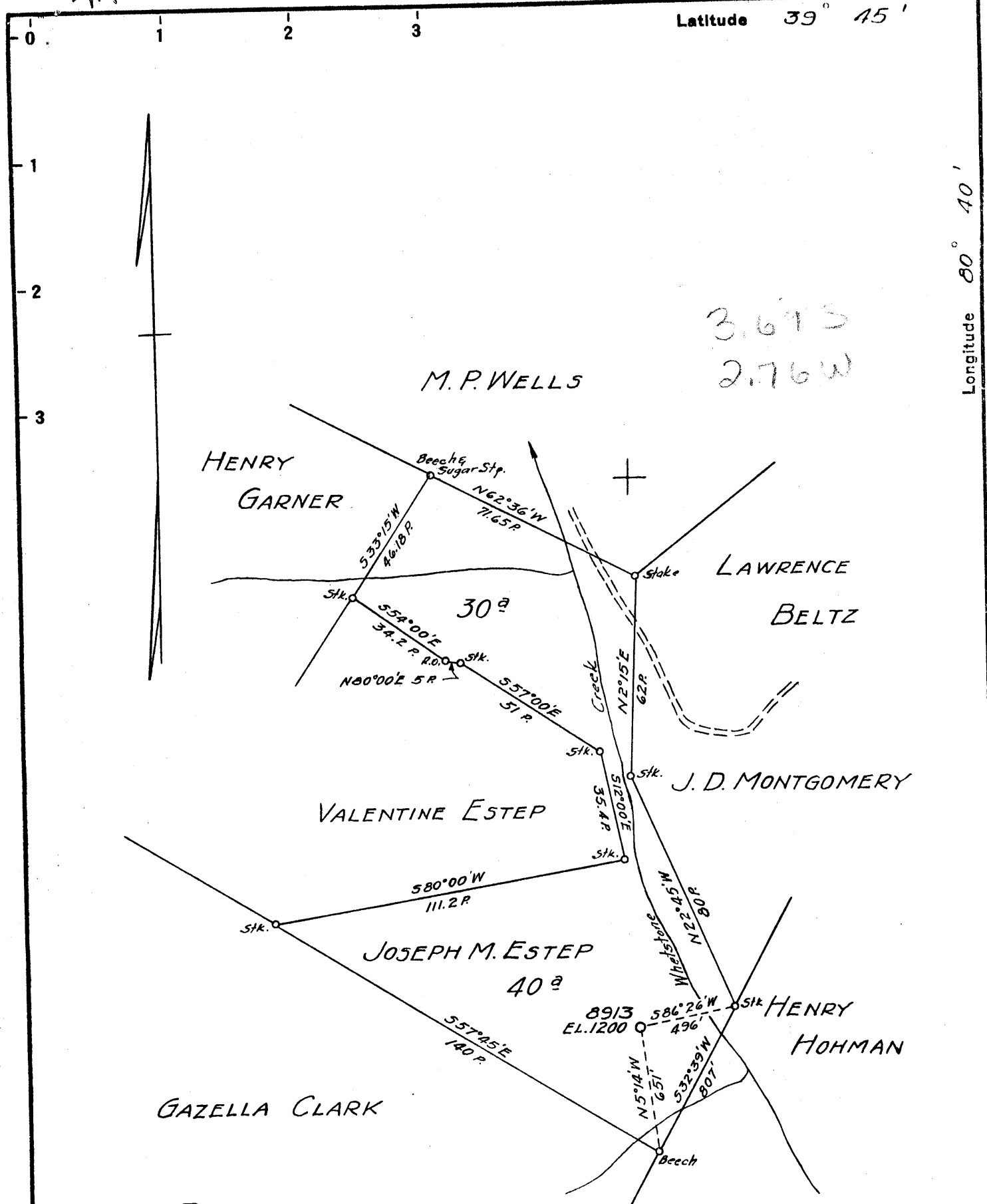


Latitude 39° 45'

Longitude 80° 40'



issued - 9-3-70

MAP SH. 33 Sq. N18 W-5 F.B. 763 P. 3 & 4

The Manufacturers Light & Heat Co.
 Company ~~HOPE NATURAL GAS CO.~~
 Address ~~P.O. Box 1196, Pittsburgh, Penna., 15230~~
~~CLARKSBURG, W. VA.~~
 Farm JOSEPH M. ESTEP
 Tract _____ Acres 40 Lease No. 55892
 Well (Farm) No. _____ Serial No. 4303
8913
 Elevation (Spirit Level) 1200
 Quadrangle LITTELTON NW
 County WETZEL District PROCTOR
 Engineer W.M. Bowers
 Engineer's Registration No. 900
 File No. _____ Drawing No. _____
 Date 7-22-44 Scale 1" = 40' x 1.5"

STATE OF WEST VIRGINIA
 DEPARTMENT OF MINES
 OIL AND GAS DIVISION
 CHARLESTON

WELL LOCATION MAP

FILE NO. WET-317-REDRIN-P

MANUFACTURERS LGT. & HEAT CO.
 + Denotes location of well on United States Topographic Maps, scale 1 to 62,500, latitude and longitude lines being represented by border lines as shown.

- Denotes one inch spaces on border line of original tracing.



STATE OF WEST VIRGINIA
DEPARTMENT OF MINES
OIL AND GAS DIVISION

Littleton

WELL RECORD

Permit No. WET-317-R

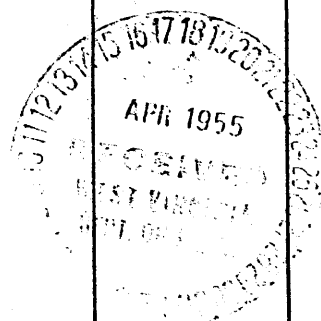
Oil or Gas Well Storage
(KIND)

Company THE MANUFACTURERS LIGHT AND HEAT COMPANY
Address 800 UNION TRUST BLDG., PGH., PENNA.
Farm Jos. M. Estep Acres 40
Location (waters) _____
Well No. 4303 (7-22215) Elev. 1200'
District Proctor County Wetzel
The surface of tract is owned in fee by _____
Address _____
Mineral rights are owned by _____
Address _____
Drilling commenced April 1, 1954
Drilling completed January 25, 1955
Date Shot _____ From _____ To _____
With _____
Open Flow 0 /10ths Water in 3/8 Inch
_____ /10ths Merc. in _____ Inch
Volume None Cu. Ft.
Rock Pressure _____ lbs. _____ hrs.
Oil _____ bbls., 1st 24 hrs.
Fresh water _____ feet _____ feet
Salt water _____ feet _____ feet

Casing and Tubing	Used in Drilling	Left in Well	Packers
Size			
16			Kind of Packer
13			
10		300'7"	Size of
8 1/4		1367'2"	
6 3/4		1982'0"	Depth set
5 3/16			
3			Perf. top
2			Perf. bottom
Liners Used			Perf. top
			Perf. bottom

CASING CEMENTED _____ SIZE _____ No. Ft. _____ Date _____
COAL WAS ENCOUNTERED AT 870 FEET _____ INCHES
965 FEET _____ INCHES FEET _____ INCHES
FEET _____ INCHES FEET _____ INCHES

Formation	Color	Hard or Soft	Top	Bottom	Oil, Gas or Water	Depth Found	Remarks
Clg. out to Set Bridge				2386	Schlumberger	Measurement	
Gravel			2386	2370	7" Delivery	String set at 1964	
Lead Plug				2370			
Gravel & Red Clay			2370	2271	8" Steel Die	nipple used to screw on t	
Lead Plug				2271	42' of original	8" pipe	
Gravel & Red Clay			2271	2221			
Lead Plug				2221	10-3/4 Casing	cemented with 125 bags	
Cement			2221	2190		cement. No return	
Red Mud			2190	2115			
Stone			2115	2100	8-5/8" casing	cemented with 300 bags	
Lead Plug			2100			cement. Good Return	
Cement			2100	2010			
Total Depth			2010		7" casing	cemented with 225 bags cemen	
					Good Return		
Top of Maxon Sand			1964				
Bottom of Maxon Sand				2010			
Coal Record							
Coal			870	875			
Pittsburgh Coal			965	972			
(Coal record copied from original record)							



WEST VIRGINIA DEPARTMENT OF MINES
OIL & GAS DIVISION
W E L L R E C O R D

Permit No. Wet 317
Littleton Quad.
Company
Address
Farm
Location
Well No
District
Surface
Mineral
Commenced
Completed
Open flow
Volume
Fresh Water
Salt Water

Hope Natural Gas Company
445 West Main St., Clarksburg, W.Va.
Joseph M. Estep Acres 40
8913 Elev. 1200
Proctor Wetzel County

Gas Well
CASING & TUBING

	10	303	303
8 1/4	1352	1352	
6 5/8	2075	2075	
5 3/16	2862	2862	

Casing not cemented

Aug. 21, 1944
Oct. 13, 1944
20/10ths W in 2" OF
189,000 C F.
None recorded
1400' 1750'

Coal at 870' 60";
965' 84"

Clay	0	10	Slate	1650	1690
Stone	10	20	First Salt	1690	1760
Lime	20	30	Slate	1760	1915
Clay	30	40	Lime	1915	1960
Lime	40	55	Second Salt	1960	2007
Red Rock	55	68	Slate Shell	2001	2052
Lime	68	85	Big Lime	2052	2100
Sand	85	106	Big Injun	2100	2880
Lime	106	130	Slate Shell	2380	2600
Sand	130	140	Slate	2600	2680
Clay	140	160	Slate Shell	2680	2730
Lime	160	178	Thirty Foot	2730	2780
Sand	178	190	Slate	2780	2830
Red Rock	190	205	Slate Shell	2830	2840
Lime	205	228	Pink Rock	2840	2890
Sand	228	235	Slate	2890	2950
Red Rock	235	247	Gordon Stray	2950	2968
Sand	247	258	Slate	2968	3002
Slate	258	298	Gordon	3002	3008
Sand	298	320	Slate Shell	3008	3125
Slate	320	395	TOTAL DEPTH		3125
Lime	395	412			
Slate	412	450	Gas 2954-2964		
Lime	450	480			
Slate	480	500			
Sand	500	575			
Slate	575	600			
Lime	600	620			
Slate	620	700			
Sand	700	720			
Slate	720	750			
Lime	750	870			
Coal	870	875			
Lime	875	965			
Pittsburgh Coal	965	972			
Lime	972	995			
Slate	995	1030			
Sand	1030	1040			
Slate	1040	1115			
Red Rock	1115	1125			
Lime	1125	1145			
Red Rock	1145	1170			
Slate	1170	1240			
Red Rock	1240	1260			
Lime	1260	1275			
Slate	1275	1300			
Red Rock	1300	1310			
Little Dunkard	1310	1315			
Slate	1315	1335			
Lime	1335	1410			
Slate	1410	1450			
Big Dunkard	1450	1470			
Slate	1470	1550			
Gas Sand	1550	1650			

2950

2052

1200

965

235