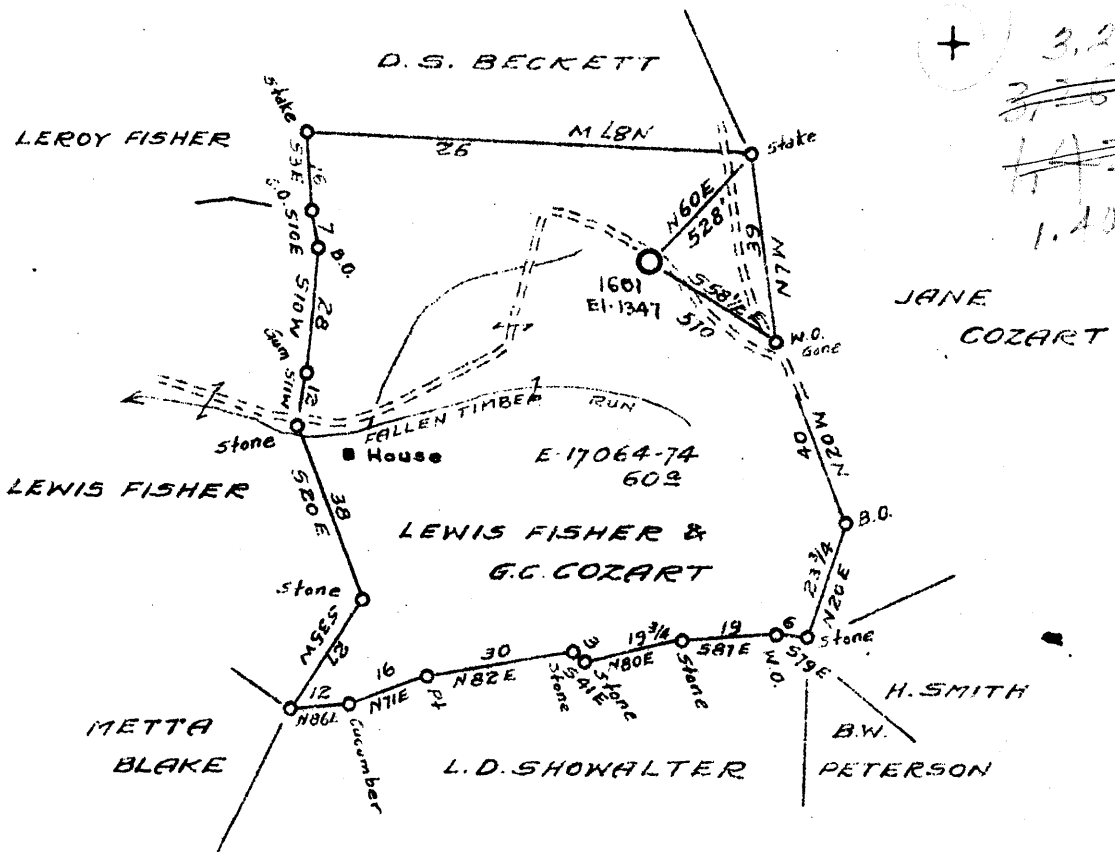


Latitude 39 35

Longitude 80 30



New Location X
 Drill Deeper
 Abandonment

Company CARNEGIE NATURAL GAS
 Address PITTSBURGH, PA.
 Farm LEWIS FISHER & G.C. COZART
 Tract _____ Acres 60 Lease No. E-17064-74
 Well (Farm) No. 1 Serial No. 1601
 Elevation (Spirit Level) 1347
 Quadrangle LITTLETON SE
 County WETZEL District GRANT
 Engineer D.T. BRITTON
 Engineer's Registration No. _____
 File No. _____ Drawing No. _____
 Date 5-25-44 Scale 1" = 40 rods

STATE OF WEST VIRGINIA
 DEPARTMENT OF MINES
 OIL AND GAS DIVISION
 CHARLESTON

WELL LOCATION MAP
 FILE NO. WET-311

+ Denotes location of well on United States Topographic Maps, scale 1 to 62,500, latitude and longitude lines being represented by border lines as shown.
 - Denotes one inch spaces on border line of original tracing

WEST VIRGINIA DEPARTMENT OF MINES
OIL & GAS DIVISION
W E L L R E C O R D

Permit No. Wet 311
Littleton S.E. Quad.

Gas Well
CASING & TUBING

Company	Carnegie Natural Gas Company			
Address	1014 Frick Bldg., Pittsburgh, Pa.	10	406	406
Farm	Fisher & Cozart Acres 60	8 1/2	1537	1537
Location	Fallen Timber Run	6 5/8	2021	2021
Well No	1 - E 1601 Elev. 1347	3	3360	3360
District	Grant Wetzell County			
Surface	See reverse side			OWS Anchor Packer
Mineral				Size 6 5/8 x 3"
Commenced	June 29, 1944			Depth 3156'
Completed	Sept. 10, 1944			
Date shot	9-14-44 Depth 3176 to 3192			Perf. top 3173
Volume	283,000 C.F.			Perf. bot 3194
Rock Pressure	55 lbs. 1 hrs.			Perf. top 3340
No oil				Perf. bot 3360
Salt Water	1940-1948			

Coal at 960'; 1053'

Clay	Red	S	0	20	Sand, 1st Salt Sand	Lt	H	1850	1880
Clay	Y	S	20	25	Slate	Dk	S	1880	1910
Lime	Lt	M	25	60	Sand, 2nd Salt	Lt	H	1910	2050
Slate	Lt	S	60	95	Slate	Lt	H	2050	2072
Red Rock		S	95	105	Gritty Lime	Lt	H	2072	2125
Lime	Lt	S	105	150	Red Rock		S	2125	2175
Red Rock		S	150	180	Gritty Lime	Lt	H	2175	2210
Slate	Dk	S	180	325	Slate	Dk	S	2210	2240
Sand	Lt	M	325	370	Lime	Lt	H	2240	2255
Slate	Dk	S	370	400	Slate	Dk	S	2255	2265
Lime	Lt	M	400	415	Lime, Little	Lt	H	2265	2275
Slate	Lt	S	415	470	Pencil Cave	Dk	S	2275	2280
Red Rock		S	470	505	Big Lime	Lt	H	2280	2335
Slate & Lime Shells	Lt	M	505	535	Big Injun Sand	Lt	H	2335	2510
Slate	Dk	S	535	605	Slate	Dk	S	2510	2630
Red Rock		S	605	615	Lime	Lt	H	2630	2650
Lime	Lt	H	615	630	Slate & Lime	Lt	H	2650	2982
Slate	Dk	S	630	650	Sand, Garden Stray	Lt	H	2982	3120
Red Rock		S	650	665	& Sand				
Sand	Lt	M	665	705	Slate	Lt	S	3120	3148
Slate	Lt	S	705	715	Sand, 4th Gully	Lt	H	3148	3194
Sand	Lt	H	715	795	Slate & Shell	Lt	M	3194	3275
Slate	Lt	S	795	820	Slate	Lt	S	3275	3360
Lime	Lt	H	820	960					
Coal	Dk	S	960	964					
Lime	Dk	H	964	975					
Slate	Lt	S	975	1000					
Lime	Lt	H	1000	1053					
Coal	Bk	S	1053	1063					
Slate	Dk	S	1063	1125					
Lime	Lt	H	1125	1135					
Slate	Dk	S	1135	1150					
Red Rock		S	1150	1160					
Slate	Dk	S	1160	1180					
Lime	Lt	H	1180	1205					
Slate	Lt	S	1205	1210					
Lime	Lt	H	1210	1245					
Red Rock		S	1245	1310					
Lime	Lt	H	1310	1335					
Red Rock		S	1335	1345					
Lime	Lt	H	1345	1400					
Slate	Dk	S	1400	1440					
Lime	Lt	H	1440	1470					
Slate	Lt	S	1470	1530					
Lime	Lt	Broken	1530	1548					
Sand, Big Dunkard	Lt	H	1548	1565					
Slate	Lt	S	1565	1590					
Slate	Dk	S	1590	1652					
Sand	Lt	H	1652	1673					
Slate	Dk	S	1673	1710					
Sand, Gas	Lt	M	1710	1735					
Slate	Dk	S	1735	1746					
Sand & Shells	Lt	M	1746	1755					
Slate	Dk	S	1755	1850					

OWNERS OF SURFACE

Lewis Fisher, Smithfield, W.Va.
G.C. & C.H. Cozart, Smithfield, W.Va.

Water in coal

OWNERS OF MINERAL RIGHTS

Lewis Fisher, Smithfield, W.Va.
G.C. & C. H. Cozart, Smithfield, W.Va.
F.M. Fisher, Smithfield, W.Va.
Minnie M. Fisher, Waynesburg, Pa.
W.L. Wade, Bloomingdale, Ohio
Malissa H. Wade, Cameron, W.Va.

2280
 1347

 953

 2280
 130

 2410
 1347

 1063

 2410
 1063

 1347