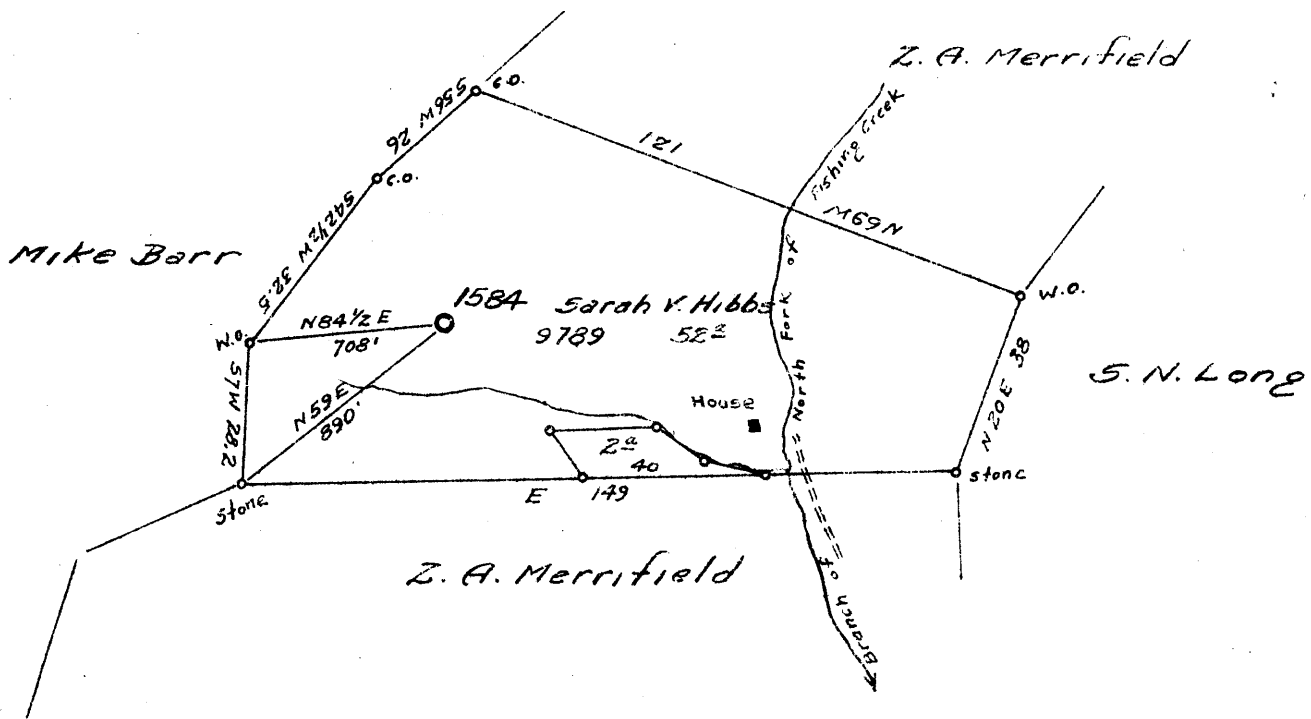


Latitude 39 35

Longitude 80 30



abd. may 49

*0.90 S
2.73 W
(2.77-11)*

New Location X
Drill Deeper
Abandonment

Company CARNEGIE NATURAL GAS
 Address PITTSBURGH, PA.
 Farm SARAH V. HIBBS
 Tract _____ Acres 52 Lease No. E-9789-74
 Well (Farm) No. 1 Serial No. 1584
 Elevation (Spirit Level) 1205
 Quadrangle LITTLETON SE
 County NETZEL District GRANT
 Engineer D.T. BRITTON
 Engineer's Registration No. _____
 No. _____ Drawing No. _____
 Date 4-26-43 Scale 1" = 40 rods

STATE OF WEST VIRGINIA
DEPARTMENT OF MINES
OIL AND GAS DIVISION
CHARLESTON

WELL LOCATION MAP
FILE NO. Wet-291 Abd.

+ Denotes location of well on United States Topographic Maps, scale 1 to 62,500, latitude and longitude lines being represented by border lines as shown.

- Denotes one inch spaces on border line of original tracing.

6-6 46

WEST VIRGINIA DEPARTMENT OF MINES
OIL & GAS DIVISION
W E L L R E C O R D

12/19

Permit No. Wet 291
Littleton S.E. Quad.

Gas Well
CASING & TUBING

Company	Carnegie Natural Gas Company				
Address	1015 Frick Bldg., Pittsburgh, Pa.	.750"	707 Sm		
Farm	Sarah V. Hibbs Acres 52	8.625"	1508 "		
Location	North Fork	7.000"	2240 "		
Well No	1, E. 1584 Elev. 1205 Bar	3.00"	3154 "		
District	Grant Wetzel County				
Surface	John Wycoff, R.F.D., Smithfield, W.Va.				
Mineral	Heirs of Sarah V. Hibbs, Odgar Gallagher				
	Atty-in-fact, Pine Grove, W.Va.	OWS Packer			
Commenced	Nov. 16, 1943	Size 6 5/8 x 8 1/2			
Completed	Jan. 24, 1944	Depth 2240'			
Date shot	1-27-44 Depth 3114-3124				
Open flow	2/10ths W in 2"	OWS Packer			
Volume	60,000 C.F.	6 5/8 x 3			
Rock Pressure	255 lbs. 48 hrs.	Depth 3040'			
Fresh Water	690'				
Salt Water	1850'	Perf. top 3108'			
		Perf. bot 3154'			

Coal at 910'; 1008'

Clay	Y	S	0	15	Sand-B.D.	Lt	H	1435	1472
Mud	Bl	S	15	30	Shale	Lt	S	1472	1480
Slate	Lt	S	30	65	Lime	Lt	H	1480	1484
Red Rock		S	65	75	Shale	Bk	S	1484	1493
Lime	Lt	H	75	85	Sand	Lt	H	1493	1514
Slate	Lt	S	85	165	Slate	Dk	S	1514	1520
Rock		S	165	190	Shale	Bk	S	1520	1528
Slate	Lt	S	190	285	Lime	Wh	H	1528	1545
Sand	Lt	MH	285	310	Slate	Wh	S	1545	1600
Slate	Dk	S	310	370	Sand-Gas	Lt	H	1600	1695
Red Rock		S	370	390	Slate	Lt	S	1695	1745
Slate	Lt	S	390	470	Salt Sand	Wh	H	1745	1780-1st
Sand	Lt	H	470	500	Slate	Dk	S	1780	1820
Slate	Dk	S	500	550	Salt Sand	Lt	H	1820	1885-2nd
Lime	Lt	S	550	570	Slate	Dk	S	1885	1915
Slate	Dk	S	370	614	Salt Sand	Lt	H	1915	2010-3rd
Lime Sand	Lt	MH	614	660	Slate	Dk	S	2010	2135
Slate	Lt	S	660	685	Red Rock		S	2135	2140
Sand	Lt	MH	685	700	Slate	Lt	S	2140	2150
Lime	Lt	MH	700	718	Red Rock		S	2150	2175
Red Rock		S	718	727	Slate	Dk	S	2175	2180
Lime	Lt	H	727	901	Lime-Little	Lt	H	2180	2204
Slate	Dk	S	901	910	Cave-Pencil	Dk	S	2204	2220
Coal-Mpletn	Bk	S	910	912	Big Lime	Lt	H	2220	2284
Slate	Dk	S	912	940	Big Injun	Lt	H	2284	2495
Lime	Lt	H	940	1008	Slate	Dk	S	2495	2585
Coal-Pitts.	Bk	S	1008	1012	Slate Shells	Lt	MH	2585	2655
Lime	Lt	H	1012	1045	Lime	Lt	H	2655	2685
Slate	Lt	S	1045	1066	Slate	Lt	S	2685	2810
Lime	Lt	H	1066	1100	Slate Shells	Lt	H	2810	2875
Red Rock		S	1100	1110	Slate-50'	Lt	S	2875	2910
Slate	Dk	S	1110	1145	Red Rock		S	2910	2918
Lime	Lt	H	1145	1225	Slate	Dk	S	2918	3030
Red Rock		S	1225	1255	Sand-30'	Lt	H	3030	3050
Slate	Lt	S	1255	1270	Slate	Lt	S	3050	3058
Lime	Lt	H	1270	1292	Gordon Stray	Lt	H	3058	3066 Sand
Red Rock		S	1292	1298	Slate	Dk	S	3066	3105
Lime	Wh	H	1298	1303	Gordon Sand	Lt	H	3105	3130
Red Rock		S	1303	1325	Slate	Lt	S	3130	3184
Lime	Lt	H	1325	1340	4th Sand	Lt	H	3184	3193
Slate	Lt	S	1340	1355	Slate	Lt	S	3193	3233
Sand-L.D.	Lt	H	1355	1372	5th Sand	Lt	Med H	3233	3243
Slate	Wh	S	1372	1378	Slate	Lt	S	3243	3314
Red Rock		S	1378	1383	Slate Shells	Lt	S	3314	3334 T.D.
Slate	Wh	S	1383	1391	Filled with stone & cement to			3154'	
Red Rock		S	1391	1308	Oil(show) 2362; Gas(little) 3108-16-18'				
Lime Shell	Wh	H	1398	1402	Gas 3108-test 10/10 W 1" 33,330 C.F.				
Red Rock		S	1402	1425	Gas 3116-test 3/10 W 2" 73,000 C.F.				
Slate	Lt	S	1425	1435					

2220
1205
1205