

New Location
 Drill Deeper
 Abandonment

AUG 19 1947

Company Little Creek Oil Co.
 Address Hundred, W Va.
 Farm W. B. Peterson
 Tract ONE Acres 340 Lease No. _____
 Well (Farm) No. 2-4-5#8 Serial No. _____
 Elevation (Spirit Level) # 2 = 809 # 5 = 1025
 # 7 = 985 # 8 = 1015
 Quadrangle Littleton
 County Wetzel District Center Day
 Engineer A. L. Headley
 Engineer's Registration No. _____
 File No. _____ Drawing No. _____
 Date 5-27-1947 Scale 1 inch = 800ft

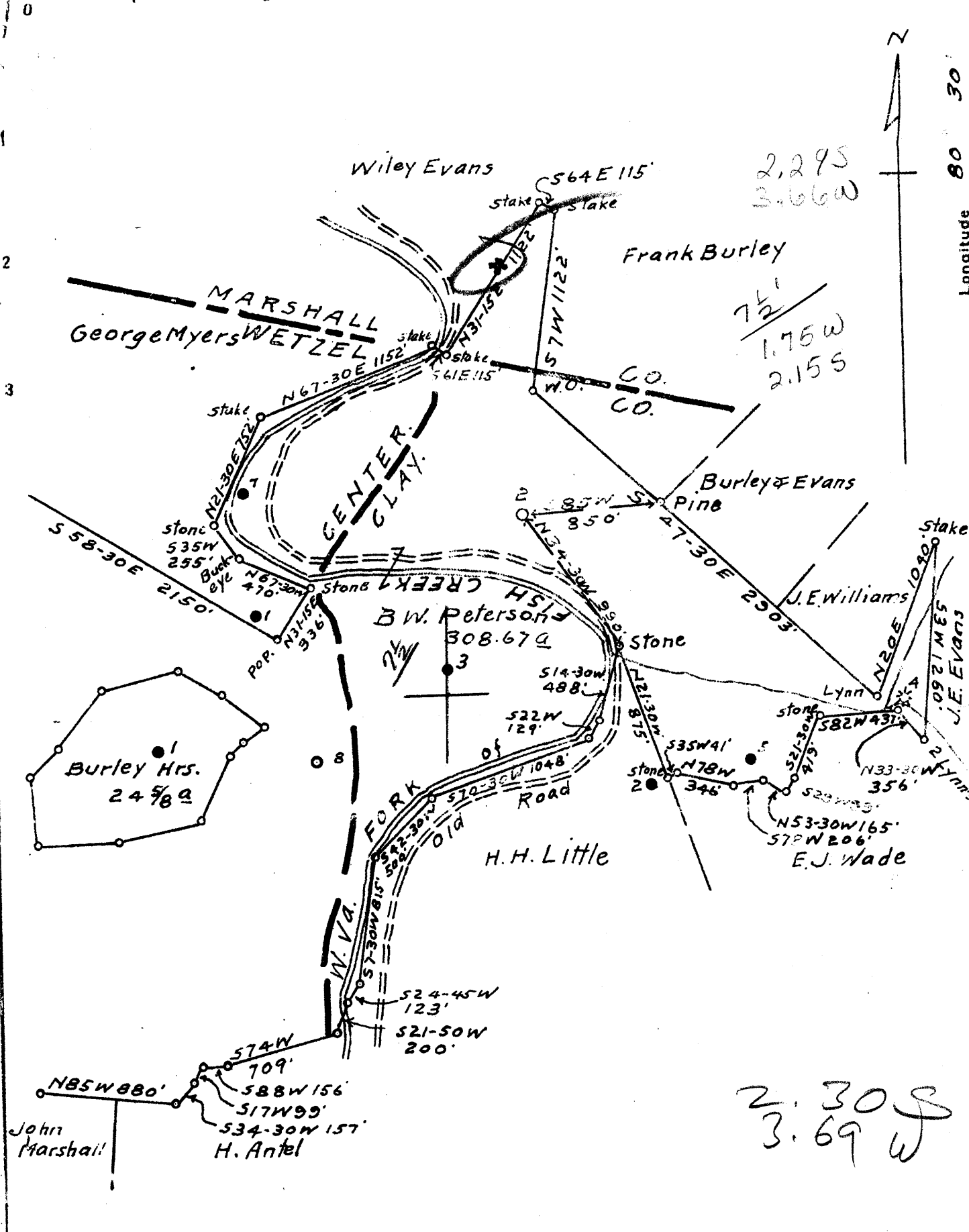
STATE OF WEST VIRGINIA
 DEPARTMENT OF MINES
 OIL AND GAS DIVISION
 CHARLESTON
 Now WET-284
 WELL LOCATION MAP
 FILE NO. WET-577-A-#2
~~WET-579-A-#4~~

+ Denotes location of well on United States Topographic Maps, scale 1 to 62,500, latitude and longitude lines being represented by border lines as shown.

- Denotes one inch spaces on border line of original tracing.

Littleton Quad

W. B. PETERSON Nos. 284 - LITTLE CREEK OIL CO. - WET-577+579



Company Johns Gas Co.
 Address Parkersburg, W.Va.
 Farm B.W. Peterson
 Tract 1 Acres 308.67 Lease No. _____
 Well (Farm) No. 2 Serial No. _____
 Elevation (Spirit Level) 879
 Quadrangle Littleton
 County Wetzel District CENTER
 Engineer O.D. Nutter
 Engineer's Registration No. _____
 File No. _____ Drawing No. _____
 Date July 17, 1942 Scale 1" = 800'

STATE OF WEST VIRGINIA
 DEPARTMENT OF MINES
 OIL AND GAS DIVISION
 CHARLESTON

WELL LOCATION MAP
 FILE NO. WET-284
 (was: 577-A)

+ Denotes location of well on United States Topographic Maps, scale 1 to 62,500, latitude and longitude lines being represented by border lines as shown.

- Denotes one inch spaces on border line of original tracing.

WEST VIRGINIA DEPARTMENT OF MINES
OIL & GAS DIVISION
W E L L R E C O R D

Permit No. Wet 284 (284)
Littleton Quad.

Oil Well
CASING & TUBING
8 1/2 1217 1217
6 5/8 1892 1892

Company Johns Gas Company
Address P.O. Box 1072 Parkersburg, W.Va.
Farm B.W. Peterson Acres --
Location Fish Creek
Well No 2 Elev. 879
District ~~Clay~~ Wetzel County
Surface --
Mineral Nampeco Corp., Wheeling, W.Va.
Commenced July 20, 1942
Completed Aug. 15, 1942

Mapletown Coal	604	612	
Pitts. Coal	709	714	2 blrs. pr. hr. Water
Little Dunkard	1060	1090	
Big Dunkard	1218	1244	
Gas Sand	1326	1360	
First Sand-Salt	1565	1650	Show gas 1605' 4 blrs. water
Second Salt Sand	1680	1725	
Little Lime	1862	1870	
Pencil Cave	1870	1874	
Big Lime	1874	1922	
Big Injun	1922	2175	Gas at 1943' 460 M' 24 hrs. reduced
Gordon Sand	2767	2794	hole at 2755'
TOTAL DEPTH		2795	Oil at 2781-2783' Gas at 2791'

SECOND DRILLING

Fourth Sand	2795	2815
TOTAL DEPTH	2815	2839

1922
1862
60

1874
879

2004
1275
879
1125

2839
2795
44



STATE OF WEST VIRGINIA
DEPARTMENT OF MINES
OIL AND GAS DIVISION

1036

WELL RECORD

Now Wet-284
Permit No. Wet-577-⁵A

Oil or Gas Well (KIND)

Company Little Creek Oil Company
Address Hundred, W. Va,
Farm W. B. Peterson Acres 340
Location (waters) _____
Well No. 2 Elev. 809
District Center & Clay County Wetzel
The surface of tract is owned in fee by _____
Address _____
Mineral rights are owned by _____
Address _____
Drilling commenced June 22, 1923
Drilling completed _____
Date Shot _____ From _____ To _____
With _____
Open Flow _____ /10ths Water in _____ Inch
_____ /10ths Merc. in _____ Inch
Volume _____ Cu. Ft.
Rock Pressure _____ lbs. _____ hrs.
Oil _____ bbls., 1st 24 hrs.
Fresh water _____ feet _____ feet
Salt water _____ feet _____ feet

Casing and Tubing	Used in Drilling	Left in Well	Packers
Size			Kind of Packer
16			
13			Size of
10			Depth set
8 1/4	1217	1217	
6 5/8	1892	1892	
5 3/16			
3			Perf. top
2	2839	2839	Perf. bottom
Liners Used			Perf. top
			Perf. bottom

CASING CEMENTED _____ SIZE _____ No. Ft. _____ Date _____

COAL WAS ENCOUNTERED AT _____ FEET _____ INCHES
_____ FEET _____ INCHES _____ FEET _____ INCHES
_____ FEET _____ INCHES _____ FEET _____ INCHES

Formation	Color	Hard or Soft	Top	Bottom	Oil, Gas or Water	Depth Found	Remarks
Mapletown Coal			604	612			
Pittsburgh coal			709	714			
Little Dunkard sand			1060	1090			
Big Dunkard sand			1218	1244	Gas	1326 - 1360	
1st salt sand			1565	1650	Gas	1605	Show
2d salt sand			1680	1725			
Little Lime			1862	1870			
Pencil cave			1870	1874			
Big lime			1874	1922			
Big Injun			1922	2175	Gas	1943	
Gordon sand			2767	2794	Gas & Oil	2781 - 2783	
Total depth				2839			

(Over)

AUG 20 1924