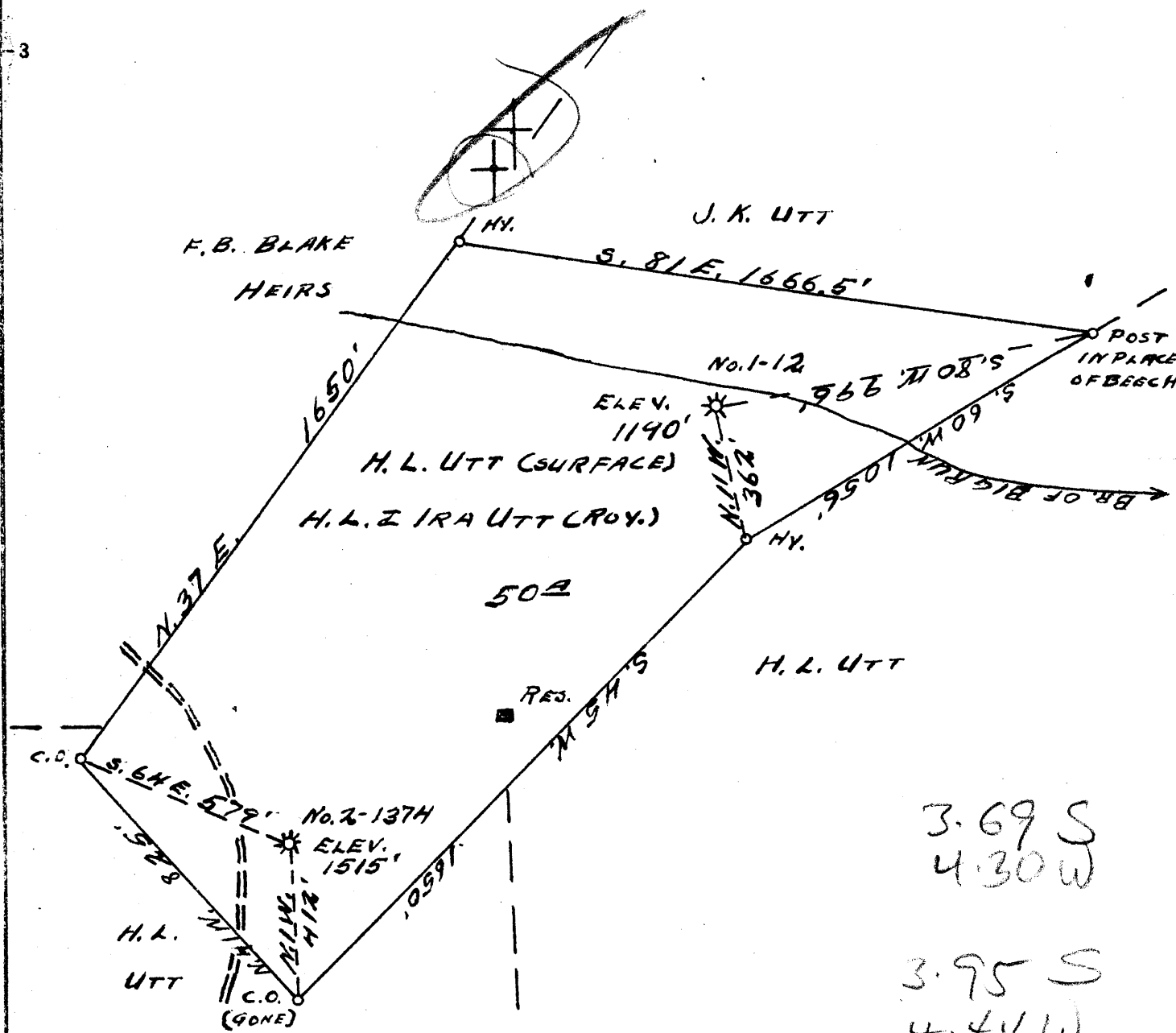


Latitude 39 40'

Longitude 80 30'



WELL No. 2-1374 TO BE DRILLED DEEPER

Company CARNEGIE NATURAL GAS CO.
 Address PITTSBURGH, PENNA.
 Farm H. L. & IRA UTT
 Tract ONE Acres 50 Lease No. E-492774
 Well (Farm) No. 2 Serial No. 1374
 Elevation (Spirit Level) SEE ABOVE
 Quadrangle LITTLETON S.E. 1/4 SEC.
 County WETZEL District GRANT
 Engineer D. T. BRITTON
 Engineer's Registration No. _____
 File No. _____ Drawing No. _____
 Date 5-31-1939 Scale 1" = 400'

STATE OF WEST VIRGINIA
 DEPARTMENT OF MINES
 OIL AND GAS DIVISION
 CHARLESTON

WELL LOCATION MAP
 FILE NO. WIT-283

+ Denotes location of well on United States Topographic Maps, scale 1 to 62,500, latitude and longitude lines being represented by border lines as shown.

- Denotes one inch spaces on border line of original tracing.

WEST VIRGINIA DEPARTMENT OF MINES
OIL & GAS DIVISION
W E L L R E C O R D

Permit No. Wet 283-D
Littleton Quad.

Company
Address
Farm
Location
Well No
District
Surface
Mineral

Commenced
Completed
Open flow
Volume
Rock Pressure

Carnegie Natural Gas Company
1014 Frick Bldg., Pittsburgh, Pa. 3
Thomas Utt Acres 50
Big Run
E- 1374 Elev. 1515'
Grant Wetzel County
H.L. Utt, Uniontown, W.Va.
H. L. Utt, Uniontown, W. Va.
and Ira Utt Box 24, R. #3, Mannington, W.Va.
June 16, 1944
July 13, 1944
42/10ths W in 2" Open - 273,000 '
273,000 C.F.
52 lbs. 1 hrs.

Gas Well
CASING & TUBING

3289

Hook Wall Packer
Size 6 5/8 x 3
Depth 2392'

DRILLED DEEPER

Commenced drilling down at			2670	
Slate	Dk	S	2670	2700
Slate	Dk	S	2700	2725
Shells	Lt	H	2725	2760
Slate	Dk	S	2760	2780
Shells	Dk	H	2780	2800
Shells	Dk	H	2800	2825
Shells	Lt	H	2825	2850
Slate	Lt	S	2850	2860
Slate	Lt	S	2860	2875
Shells	Dk	S	2875	2900
Slate	Dk	S	2900	2910
Slate	Lt	S	2910	2950
Lime Shell	Dk	H	2950	2955
Slate	Lt	S	2955	2975
Shells	Dk	S	2975	3000
Slate	Dk	S	3000	3075
Lime Shell	Lt	H	3075	3080
Slate	Dk	S	3080	3100
Shells	Lt	H	3100	3115
Slate	Dk	S	3115	3130
Lime Shells	Lt	H	3130	3150
Slate	Dk	S	3150	3160
Slate	Lt	S	3160	3180
Red		S	3180	3185
Gordon Stray	Lt	H	3185	3214
Gordon Sand	Gr	H	3214	3241
Slate	Dk	S	3241	3289
TOTAL DEPTH				3289

Gas 3214' 3230

2670
619

WEST VIRGINIA DEPARTMENT OF MINES
OIL & GAS DIVISION
W E L L R E C O R D

Permit No. Wet 283
Littleton Quad.
Company
Address
Farm
Location
Well No
District
Surface
Mineral

Commenced
Completed
Open Flow
Volume
Rock Pressure

Carnegie Natural Gas Company
Hundred, West Virginia
H.L. & Ira Utt Acres 50
Branch Big Run
E-1374 Elev. 1190'
Grant Wetzel County
H.L. Utt, Uniontown, W.Va.
H.L. Utt, Uniontown, W.Va. and
Ira Utt, Route #3, Box 24, Mannington, W.Va.
Dec. 7, 1942
March 24, 1943
44/10ths W in 3"
630,000 C.F.
220 lbs. 1 hrs.

Gas Well
CASING & TUBING

6 5/8 283'
Bottom Hole Packer
Size 6 5/8
Depth 2278'

DRILLED DEEPER

Waynesburg Coal		774	777	
Mapleton Coal		1062	1066	
Pittsburgh Coal		1152	1158	
Murphy Sand		1280	1324	Show of gas 1315-1318
Little Dunkard		1546	1594	
Big Dunkard		1614	1667	
Gas Sand		1690	1716	- Dunkard?
1st Salt Sand		1898		Gas at 1901-1904
TOTAL DEPTH	<u>1-12-27</u>		1908	
1st Salt Sand			1940	
2nd Salt Sand		1955	2005	Water 1970
3rd Salt Sand		2048	2091	Water 2066
4th Salt Sand		2160	2195	
Maxon Sand		2265		Show of gas 2278
<i>salt</i>				Show of gas & oil 2298-2300
TOTAL DEPTH			2327	Gas at 2314-2316
Maxon Sand	Dk	H	2265	2351
Pencil Cave	Dk	S	2351	2355
Big Lime	Lt	H	2355	2412
Big Injun	Lt	H	2412	2586
Slate	Dk	S	2586	2590
Squaw Sand	Lt	H	2590	2627
Slate	Lt	S	2627	2637
Lime	Lt	H	2637	2665
Slate	Dk	S	2665	2670
TOTAL DEPTH			2670	

Gas 2494-2499

2712
 125
 2480
 2712
 965

2712
 1320

2327
 2355
 219
 2355
 1190
 1165

15 15
 1152
 363