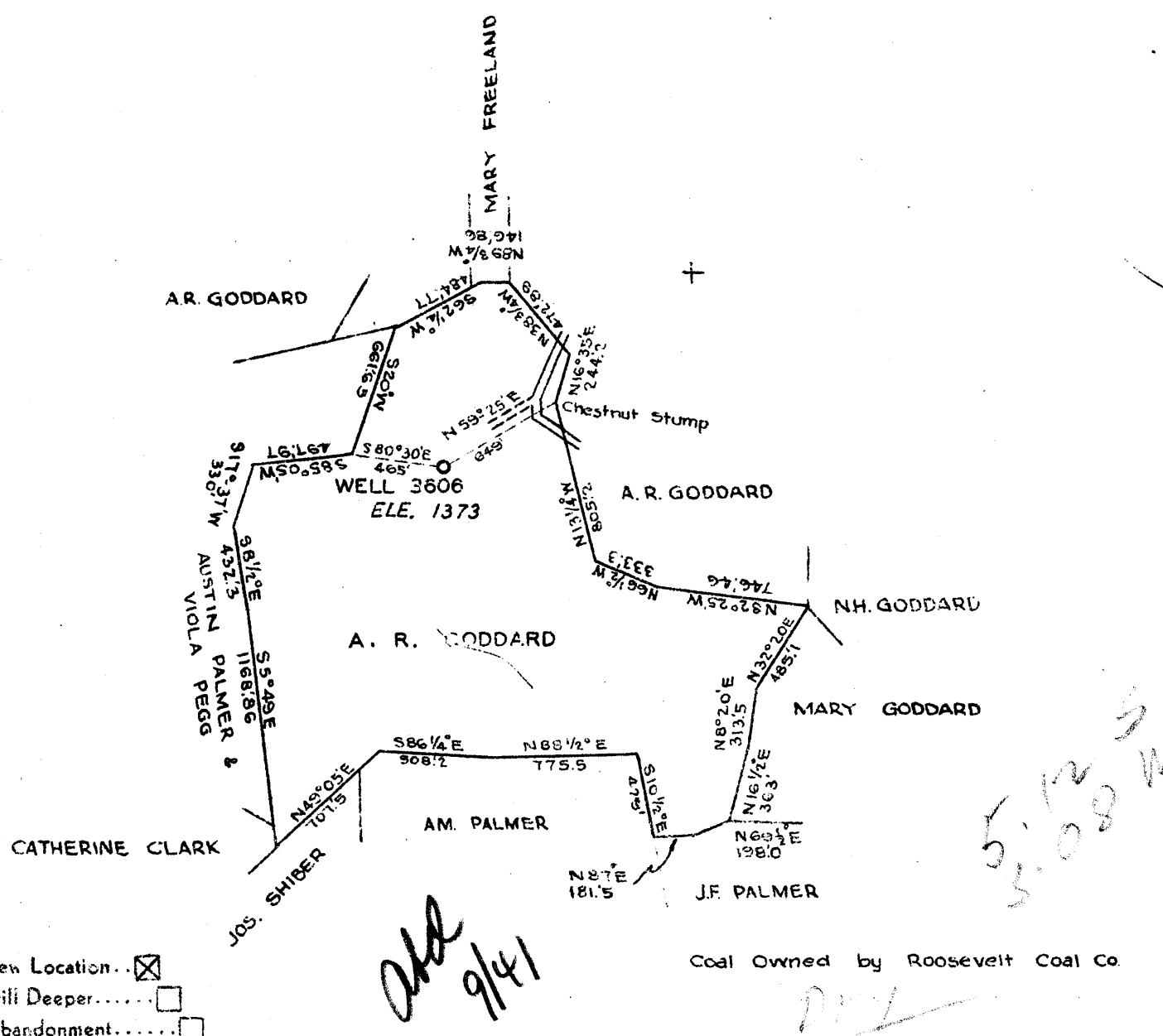


1
2
3



Company THE MANUFACTURERS LIGHT & HEAT CO.
 Address 800 UNION TRUST BLDG. PGH. PA.
 Farm A R GODDARD
 Tract Acres 100 Lease No. 13022
 Well (Farm) No. Serial No. 3606
 Elevation (Spirit Level) 1373'
 Quadrangle LITTLETON W. VA.
 County WETZEL District PROCTOR
 Engineer *H.R. Wetzel*
 Engineer's Registration No.
 File No. Drawing No. 136
 Date 6-19-41 Scale 1" = 800'

STATE OF WEST VIRGINIA
 DEPARTMENT OF MINES
 OIL AND GAS DIVISION
 CHARLESTON
 WELL LOCATION MAP
 File No. **WET-259**
 + Denotes location of well on United States Topographic Maps, scale 1 to 62,500, latitude and longitude lines being represented by border lines as shown.
 --- Denotes one inch spaces on border line of original tracing.

OF WEST VIRGINIA
DEPARTMENT OF MINES
OIL AND GAS DIVISION

WELL RECORD

Permit No. NET 259

Oil or Gas Well Dry hole
(KIND)

Company The Manufacturers Light & Heat Co.
 Address 800 Union Trust Bldg., Pittsburgh, Pa.
 Farm A. R. Goddard Acres 100
 Location (waters).....
 Well No. 1 - 3606 Elev. 1373 ft.
 District Proctor County Wetzel
 The surface of tract is owned in fee by A. R. Goddard
R D 2 Address Proctor, WVa.
 Mineral rights are owned by The Mfrs Light & Heat Co.
800 Union Trust Bldg Address Pittsburgh, Pa.
 Drilling commenced 8/1/12
 Drilling completed 9/9/12
 Date shot..... Depth of shot.....
 Open Flow /10ths Water in..... Inch
 /10ths Merc. in..... Inch
 Volume..... Cu. Ft.
 Rock Pressure..... lbs..... hrs.
 Oil..... bbls., 1st 24 hrs.
 Fresh water..... feet..... feet
 Salt water..... feet..... feet

Casing and Tubing	Used in Drilling	Left in Well	Packers
Size			
16.....			Kind of Packer.....
13.....			
10.....	<u>455' 4"</u>		Size of.....
8 1/4.....	<u>1630' 2"</u>		
6 5/8.....	<u>2226' 3"</u>		Depth set.....
5 3/16.....			
3.....			Perf. top.....
2.....			Perf. bottom.....
Liners Used.....			Perf. top.....
			Perf. bottom.....

CASING CEMENTED..... SIZE..... No. Ft..... Date.....
 COAL WAS ENCOUNTERED AT 686 FEET 12 INCHES
1012 FEET 12 INCHES 1105 FEET 36 INCHES
 FEET..... INCHES..... FEET..... INCHES

Formation	Color	Hard or Soft	Top	Bottom	Oil, Gas or Water	Depth Found	Remarks
Clay, Lime, Slate			0	120			
Sand			120	130			
Slate, Lime, Red Rock			130	686			
Coal			686	687			
Slate, Lime, Red Rock			687	1012			
Mapletown Coal			1012	1013			
Lime & Slate			1013	1105			
Pittsburgh Coal			1105	1108			
Slate, Lime, Red Rock			1108	1315			
Cave			1290	1310			
Slate, Lime & Red Rock			1315	1462			
Little Dunkard Sand			1462	1490			
Lime			1490	1520			
Sand L.D.			1520	1545			
Slate & Pink Rock			1545	1586			
Big Dunkard Sand			1586	1610			
Lime & Slate			1610	1675			
Gas Sand U.			1675	1700			
Slate			1700	1718			
1st Salt Sand	L.G.S.		1718	1772			
Slate, Lime & Shale			1772	1825			
2nd Salt Sand	1st		1825	1885			
Slate & Lime			1885	1915			
Sand 2nd salt			1915	1952			
Shale, Lime, Slate			1952	2050			
3rd Salt Sand			2050	2076			
Lime, Shale, Slate, Rock			2076	2195			
Pencil Cave			2195	2205			
Big Lime			2205	2268			
Big Injun			2268	2520			
Slate, Lime & Shells			2520	2664			
Beaver Sand	Wetzel		2664	2722			
Slate, Lime, Shells			2722	2870			
50-Foot Sand	Beaver		2870	2906			
Slate, Lime			2906	2945			
30-Foot Sand	Beaver		2945	2965			
Red Rock, Slate			2965	3067			
Stray Sand			3067	3095			
Slate, Shells, Lime			3095	3230			
Total depth				3230			

2205
1373

832

