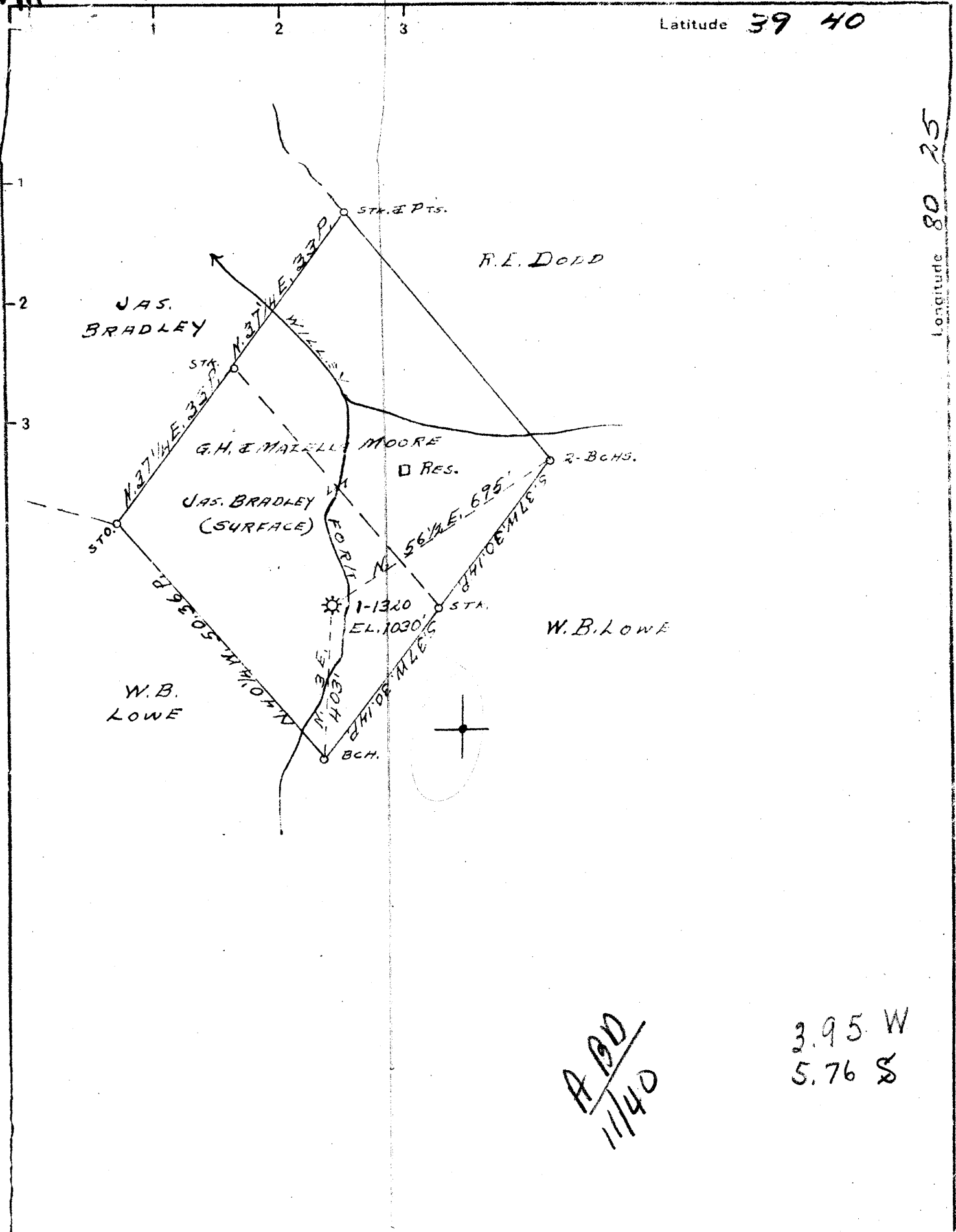


Latitude 39 40

Longitude 80 25



*A.D.D.*  
*1/140*

*3.95 W*  
*5.76 S*

WELL TO BE DRILLED DEEPER.

Company CARNEGIE NAT. GAS COMPANY  
 Address PITTSBURGH - PENNA.  
 Farm G.H. & MAZELLA H. MOORE  
 Tract ONE Acres 24 Lease No. E-11715-74  
 Well (Farm) No. 1 Serial No. 1320  
 Elevation (Spirit Level) 1030'  
 Quadrangle MANNINGTON S.W. 1/4  
 County WETZEL District GRANT  
 Engineer D.T. BRITTON  
 Engineer's Registration No. \_\_\_\_\_  
 File No. \_\_\_\_\_ Drawing No. \_\_\_\_\_  
 Date 3-14-1942 Scale 1" = 20 P. = 330'

STATE OF WEST VIRGINIA  
 DEPARTMENT OF MINES  
 OIL AND GAS DIVISION  
 CHARLESTON

WELL LOCATION MAP  
 FILE NO. WET-237

+ Denotes location of well on United States Topographic Maps, scale 1 to 62,500, latitude and longitude lines being represented by border lines as shown.

- Denotes one inch spaces on border line of original tracing.



WEST VIRGINIA DEPARTMENT OF MINES  
OIL & GAS DIVISION  
W E L L R E C O R D

Dry Hole

Permit No. Wet-237

CASING & TUBING

8-1/4      1225  
6-5/8      2005  
5-3/16      2870

|                     |  |
|---------------------|--|
| Company             | Carnegie Natural Gas Co.                 |
| Address             | 1014 Frick Bldg., Pittsburgh, Pa.        |
| Farm                | Mazella V. Moore      ACRES 24           |
| Location            | Willey Fork                              |
| Well No.            | 1-E-1320      ELEV. 1030                 |
| Surface             | James Bradley, Coburn, W. Va.            |
| Mineral             | G.M. & Mazella V. Moore, Woodruff, W.Va. |
| Commenced Deepening | Sept. 25, 1940                           |
| Completed Deepening | Oct. 2, 1940                             |
| Gas                 | -  |
| Oil                 | -  |
| Rock Pressure       | -  |
| Water               | -  |

ORIGINAL DEEPENING RECORD - Completed Deepening March 13, 1926  
With open flow 8/10ths Water in 2" and 134,000 c.f.  
Rock Pressure 285 lbs. 20 hrs.  
Salt water at 1645

|                          |      |      |             |
|--------------------------|------|------|-------------|
| Mapletown Coal           | 650  | 654  |             |
| Pgh. Coal                | 745  | 753  |             |
| Little Dunkard           | 1105 | 1120 |             |
| Big Dunkard              | 1220 | 1270 |             |
| Gas Sand                 | 1390 | 1485 |             |
| 1st Salt Sand            | 1519 | 1665 | W at 1645   |
| 2nd Salt Sand            | 1727 | 1790 |             |
| Maxton Sand              | 1880 | 1975 |             |
| Big Lime                 | 1975 | 2040 |             |
| Big Injun                | 2040 | 2225 | Gas at 2060 |
| 50-Foot                  | 2655 | 2700 |             |
| 30-Foot                  | 2775 | 2809 |             |
| Gordon Stray             | 2840 | 2846 |             |
| Gordon Sand              | 2869 | 2905 | Gas at 2878 |
| 4th Sand                 | 2917 | 2934 | Gas at 2921 |
| Total Original Deepening |      | 3042 |             |

1975      1030  
1030      745  
            285

RECORD OF WELL DRILLED DEEPER and TO BE ABANDONED:

|                     |      |      |                     |
|---------------------|------|------|---------------------|
| Drilled deeper from | 3042 |      |                     |
| <del>Sand</del>     | 3044 |      |                     |
| Slate               | 3044 | 3060 |                     |
| Lime Shell          | 3060 | 3064 |                     |
| Slate               | 3064 | 3072 |                     |
| Slate & Lime        | 3072 | 3117 |                     |
| 6th Sand            | 3117 | 3123 | Show of gas at 3118 |
| Total Depth         |      | 3150 |                     |

(Submitted for plat service distribution  
March 12, 1941 - Active area)

1975  
1030  
        
2605  
7030  
        
10225