



West Virginia Department of Environmental Protection
Office of Oil and Gas
WELL LOCATION FORM: GPS

API: 47-103-00223 P WELL NO.: WV 605262 (Morgan #5262)

FARM NAME: Morgan

RESPONSIBLE PARTY NAME: EOT Production Company

COUNTY: Wetzel DISTRICT: Grant

QUADRANGLE: Big Run 7.5'

SURFACE OWNER: Coastal Lumber Company

ROYALTY OWNER: Frances M. Dudley

UTM GPS NORTHING: 4,381,765

UTM GPS EASTING: 541,744 GPS ELEVATION: 355 m (1167 ft)

The Responsible Party named above has chosen to submit GPS coordinates in lieu of preparing a new well location plat for a plugging permit or assigned API number on the above well. The Office of Oil and Gas will not accept GPS coordinates that do not meet the following requirements:

1. Datum: NAD 1983, Zone: 17 North, Coordinate Units: meters, Altitude: height above mean sea level (MSL) – meters.
2. Accuracy to Datum – 3.05 meters
3. Data Collection Method:
Survey grade GPS : Post Processed Differential
Real-Time Differential
Mapping Grade GPS : Post Processed Differential
Real-Time Differential
4. Letter size copy of the topography map showing the well location.

I the undersigned, hereby certify this data is correct to the best of my knowledge and belief and shows all the information required by law and the regulations issued and prescribed by the Office of Oil and Gas.

Ben P. Slaughter
Signature
8-26-2011
Date

P.S. 2092
Title

Topo Quad: Big Run 7.5'

Scale: 1" = 2000'

County: Wetzel

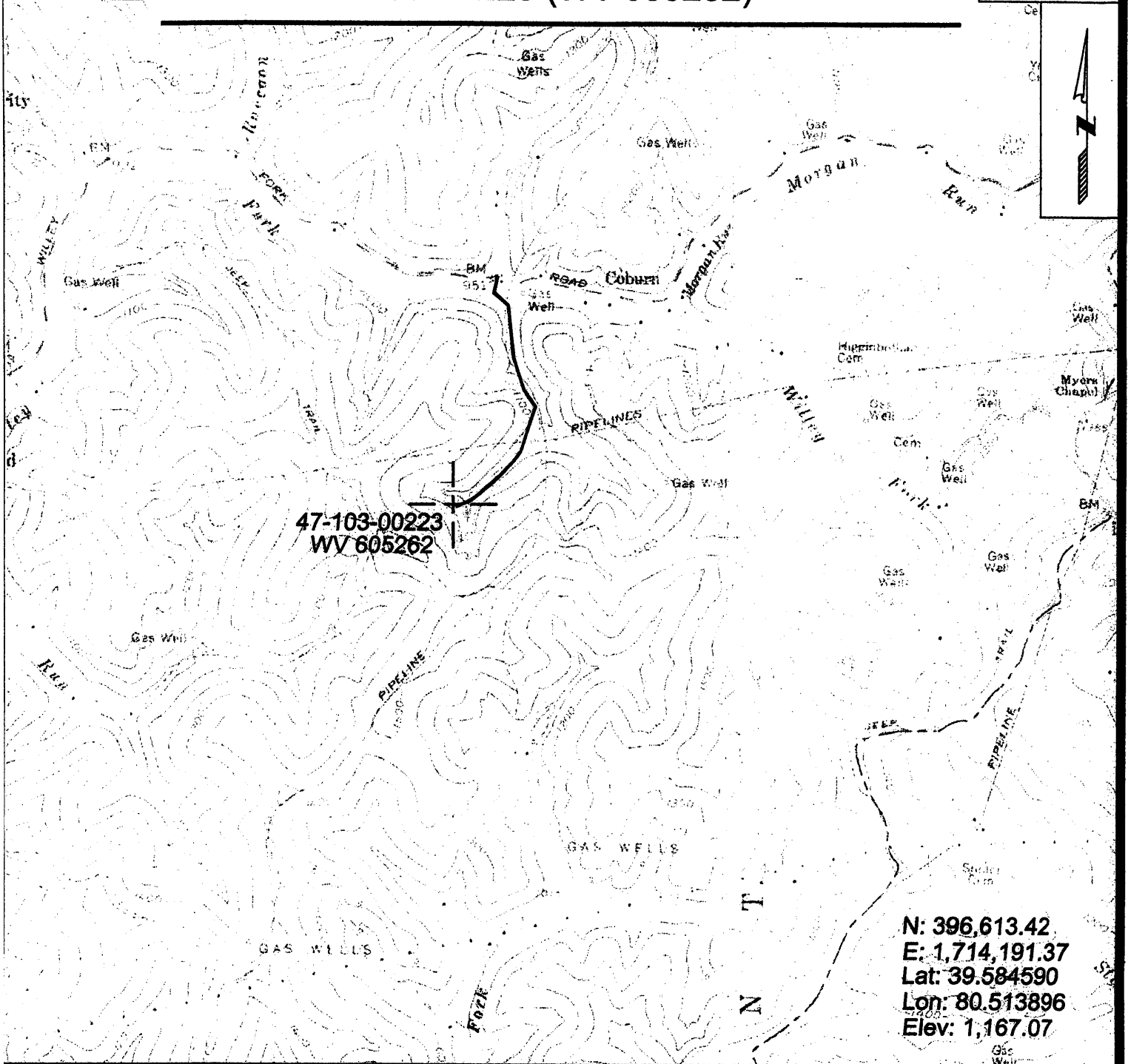
Date: June 20, 2011

District: Grant

Project No: 40-34-00-09

47-103-00223 (WV 605262)

Topo



N: 396,613.42
 E: 1,714,191.37
 Lat: 39.584590
 Lon: 80.513896
 Elev: 1,167.07



SURVEYING AND MAPPING SERVICES PERFORMED BY:

ALLEGHENY SURVEYS, INC.

1-800-482-8606
 P.O. BOX 438
 BIRCH RIVER, WV 26610
 PH: (304) 649-8606
 FAX: (304) 649-8608

PREPARED FOR:

EQT Production Company

1710 Pennsylvania Ave.
 Charleston, WV 25302

WEST VIRGINIA DEPARTMENT OF MINES

OIL & GAS DIVISION

WELL RECORD

Permit No. Wet-223

Gas Well

Littleton S. E. Quad.

CASING & TUBING

Company Pittsburgh & West Va. Gas Co.,
 Address Clarksburg, W. Va.
 Farm Mollic R. Morgan ACRES 137
 Location Littleton S/E 2-4
 Well No. 5262 ELEV. 1148
 District Grant - Wetzel County
 Surface LeRoy Taylor, Hundred, W. Va.
 Mineral Laura M. Miller, Parkersburg, W.Va.
 Drilling commenced March 21, 1939
 Drilling completed April 8, 1939
 Open Flow 5/10ths Water in 2-inch
 Volume 105,792 c.f.
 Rock Pressure 162 lbs. 21 hrs.
 Water -

Formation Color ^{Hwy} 5 Top Base Result				Formation Color ^{Hwy} 5 Top Base Result			
Began Drilling	Deeper at		2199				
Big Injun	drk h		2308				
Slate&Shells	" hs	2308	2408	2308			
Lime	wh h	2408	2460	1148			
Slate&Shells	drk s	2460	2479	2150			
Lime	wh h	2479	2503				
Slate	drk s	2503	2514				
Slate&Shells	" hs	2514	2655				
Thirty Foot	" h	2655	2681				
Slate&Shell	wh hs	2681	2708				
Lime	wh h	2708	2768				
Slate&Shells	drk s	2768	2780				
Sand&Shell	drk h	2780	2800				
Slate&Shells	wh hs	2800	2850				
Thirty Foot	wh h	2850	2863				
Slate	drk s	2863	2870				
Gordon Stray	" h	2870	2904	Slate 2892-94			
Slate&Shells	" hs	2904	2939				
Gordon Sand	wh h	2939	2990	Gas 2978-80	Slate 2964-66		
Slate	wh s	2990	3005				
4th Sand	wh h	3005	3015	Gas 3010	5/10 W 2"		
Slate&Shells	" hs	3015	3200				
7yard Sand	" h	3200	3206	Gas 3200	8/10 W 2"		
Slate	" s	3206	3230				
Total Depth			3230				