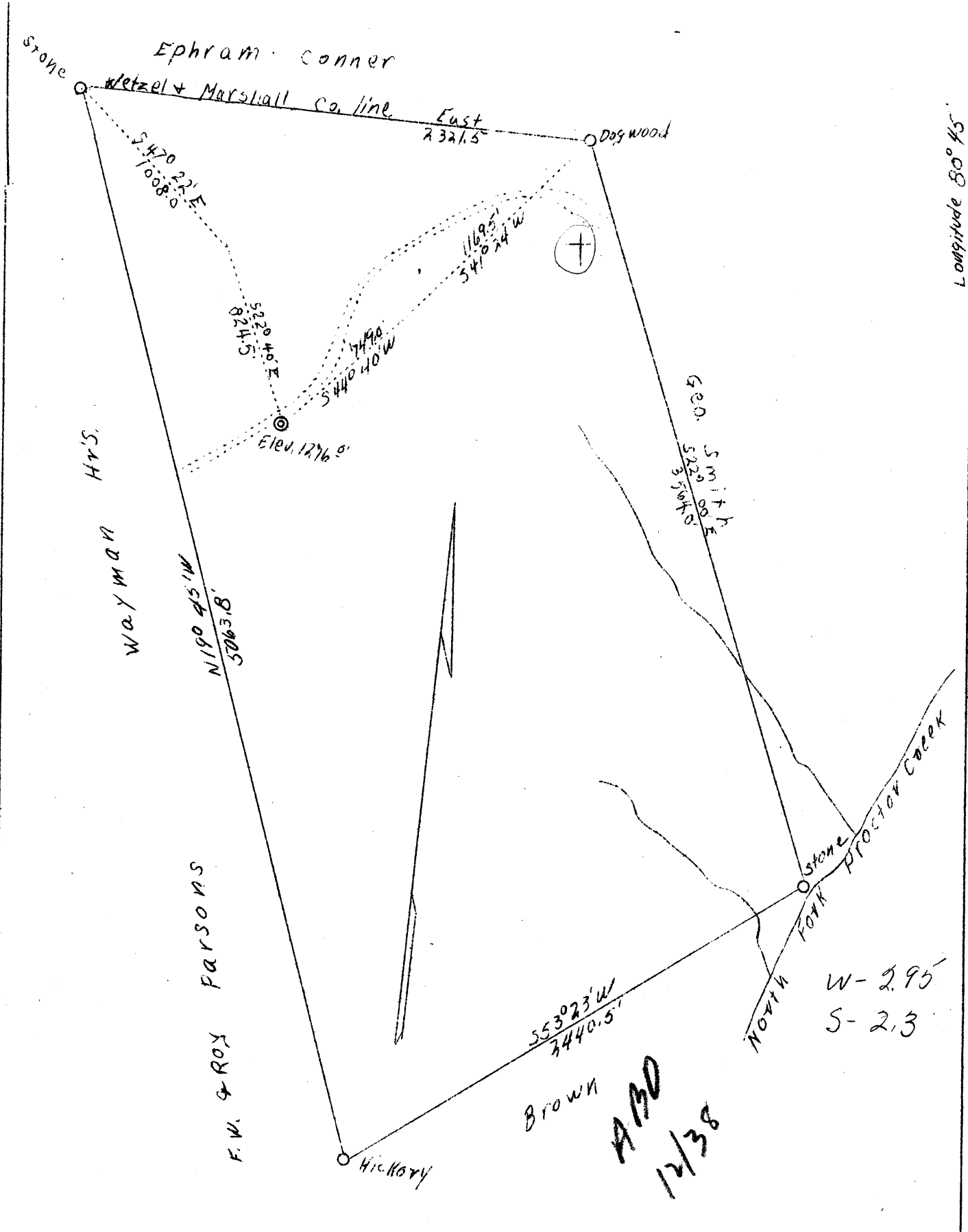


Latitude 39° 45'

Longitude 80° 45'



Company	Geo. Wasmuth
Address	Glendale W.Va.
Farm	Ina Lowery
Tract	1
Acres	219.15
Lease No.	1
Well (Farm) No.	1
Quadrangle	New Martinsville <i>NE.</i>
County	Wetzel
District	Proctor
Eng.	Geo. L. McIntire
Date	11/21/38
Scale	1" = 600'

61-1276

STATE OF WEST VIRGINIA
 Department Of Mines
 OIL AND GAS DIVISION
 Charleston

WELL LOCATION MAP

File No. Wet-215

x Denotes location of well on U.S. Topographic Maps, scale 1 to 62,500, latitude and longitude lines being represented by border lines as shown.

WEST VIRGINIA DEPARTMENT OF MINES

OIL & GAS DIVISION

WELL RECORD

Permit No. Wet-215-P

Quad.

Dry Hole

CASING & TUBING

Company	Geo. P. Wasmuth	1 1/2	20
Address	Glendale, W. Va.	8-1/4	260
Farm	Ian Wayman ACRES 219	5-3/16	1136
Location	Ohio River	COAL ENCOUNTERED:	
Well No.	One ELEV. 1276	Feet	Inches
District	Proctor County Wetzel	800	18
Surface & Mineral	Ina Lowry, Proctor, W. Va.	883	18
Drilling commenced	Dec. 7, 1938		
Drilling completed	Dec. 20, 1938		
Date shot	-		
Open Flow	-		
Volume	-		
Rock Pressure	-		
Fresh Water	60		
Salt Water	None		

Formation Color ^{Mar} TOP Base Result Formation Color ^{Mar} TOP Base Result

Soil		0	12							
Rock		12	20							
Red Rock		20	25							
Rock		25	50	Water						
Slate		50	90							
Red Rock		90	105							
Slate		105	130							
Red Rock		130	140							
Slate		140	180							
Red Rock		180	225							
Slate		225	270							
Lime Shells		270	325							
Sand		325	370							
Lime		370	385							
Sand		385	450							
Lime		450	465							
Slate		465	560							
Lime Shells		560	635							
Red Rock		635	655							
Slate		655	675							
Lime		675	727							
Red Rock		727	800							
Coal Blossom		800	801 1/2							
Slate		801 1/2	815							
Lime		815	880							
Slate		880	883							
Coal Blossom Phos		883	884 1/2							
Slate		884 1/2	897							
Sand		897	945							
Red Rock		945	975							
Slate		975	1030							
Red Rock		1030	1040							
Slate		1040	1136							
Lime		1136	1168							
Sand Horse Neck		1168	1190	Dry						
Slate		1190	1217							
Cow Run Sand		1217	1239	Dry						
Slate		1239	1275							
Red Rock		1275	1286							
Total Depth			1286	Dry Hole						