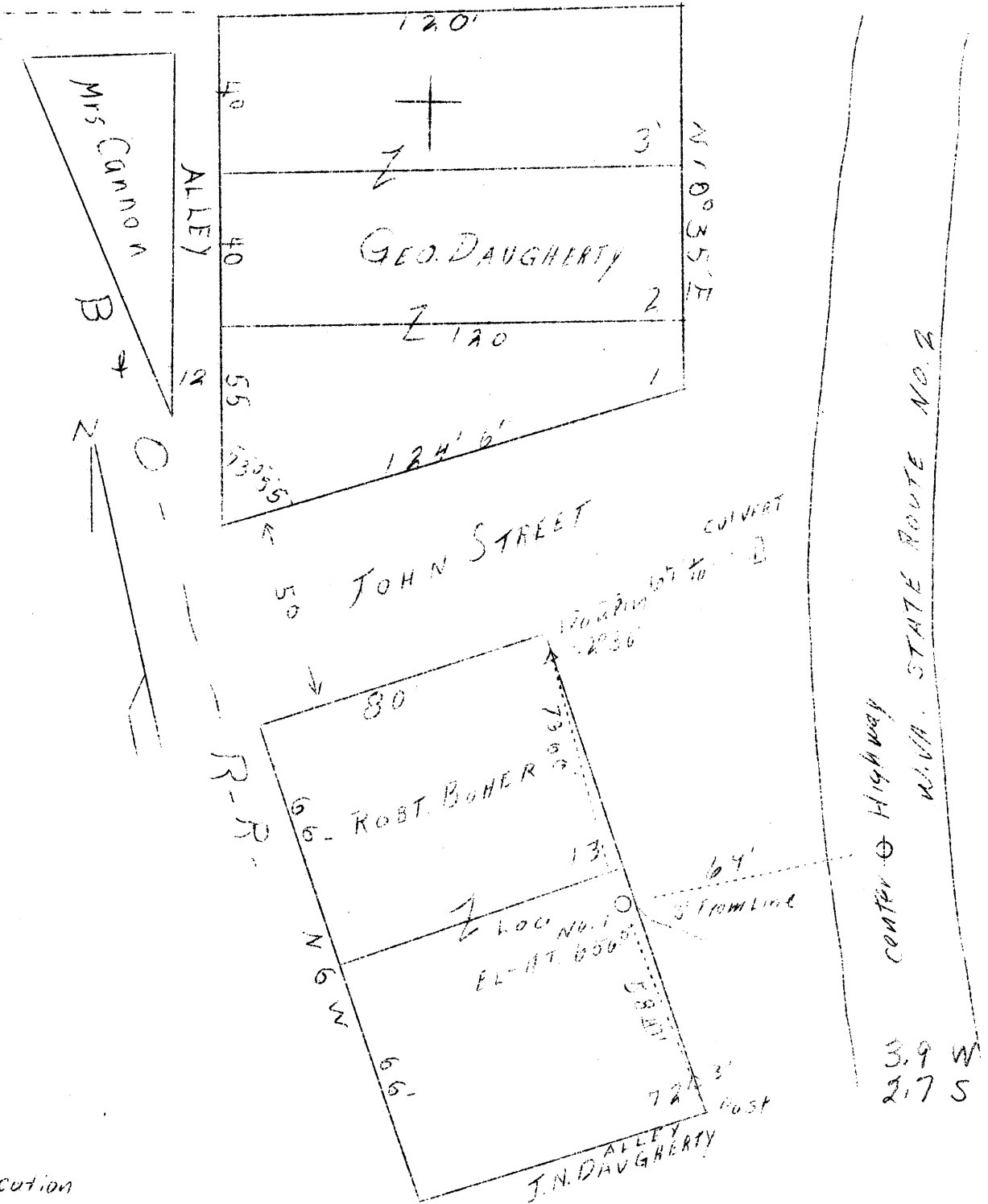


LATITUDE 39° 45'

LONGITUDE 80° 45'

O.W. & Rose Erlewine



New location

Company W. F. Burgess  
 Address Moundsville, W. Va.  
 Acres Lots 1, 2 & 3, Block 1 - 1st Addition, Lots 12 & 13 old plat, Proctor, W. Va.  
 Well (Farm) No. -  
 Farm -  
 Elevation (SP) 656.54  
 Quadrangle New Martinsville N, E  
 County Wetzel  
 District Proctor  
 Engineer F. W. Parsons  
 Eng. Reg. No. 203  
 File No. W  
 Date Nov. 5, 1938  
 Scale 1" 20'

STATE OF WEST VIRGINIA  
 Department of Mines  
 OIL & GAS DIVISION  
 Charleston

WELL LOCATION MAP

File No. Wet. 211

x Denotes location of well on U. S. Topographic Maps, scale 1 to 62,500, latitude and longitude lines being represented by border lines as shown.

- Denotes one inch spaces on border line of original tracing.

WEST VIRGINIA DEPARTMENT OF MINES

OIL & GAS DIVISION

W E L L R E C O R D

Permit No. Wet-211

Gas Well

New Martinsville Quad.

CASING & TUBING

Company	Burgess & Wasmuth	8-1/4	15
Address	Moundsville, W. Va.	6-1/4	147 147
Farm	Geo. Daugherty & Robt. Bohrer	4-7/8	389 389
Acres	Lots	2	567 567
Location	Ohio River		
Well No.	One ELEV. 656	Packer:	
District	Proctor - Wetzel County	4-7/8x2 Larson	
Surface & Mineral	Geo. Daugherty & Robt Bohrer	Depth set - 550	
	Proctor, W. Va.	Perf. bottom - 564	
Drilling commenced	11-8-38 Completed 11-23-38		
Open Flow	-	Coal Encountered:	
Volume	650,000 c.f.	Mapletown - show	
Rock Pressure	105 lbs. hrs.	Pittsburgh - 246	
Fresh Water	85		
Salt Water	None		

<i>Formation Color</i>					<i>Formation Color</i>				
<i>5</i>	<i>TOP</i>	<i>Base</i>	<i>Result</i>		<i>5</i>	<i>TOP</i>	<i>Base</i>	<i>Result</i>	

✓ 1st Cow Run	lgt. h	546	566	gas 560					
Coal formations very thin Light show of gas in Pittsburgh vein.									