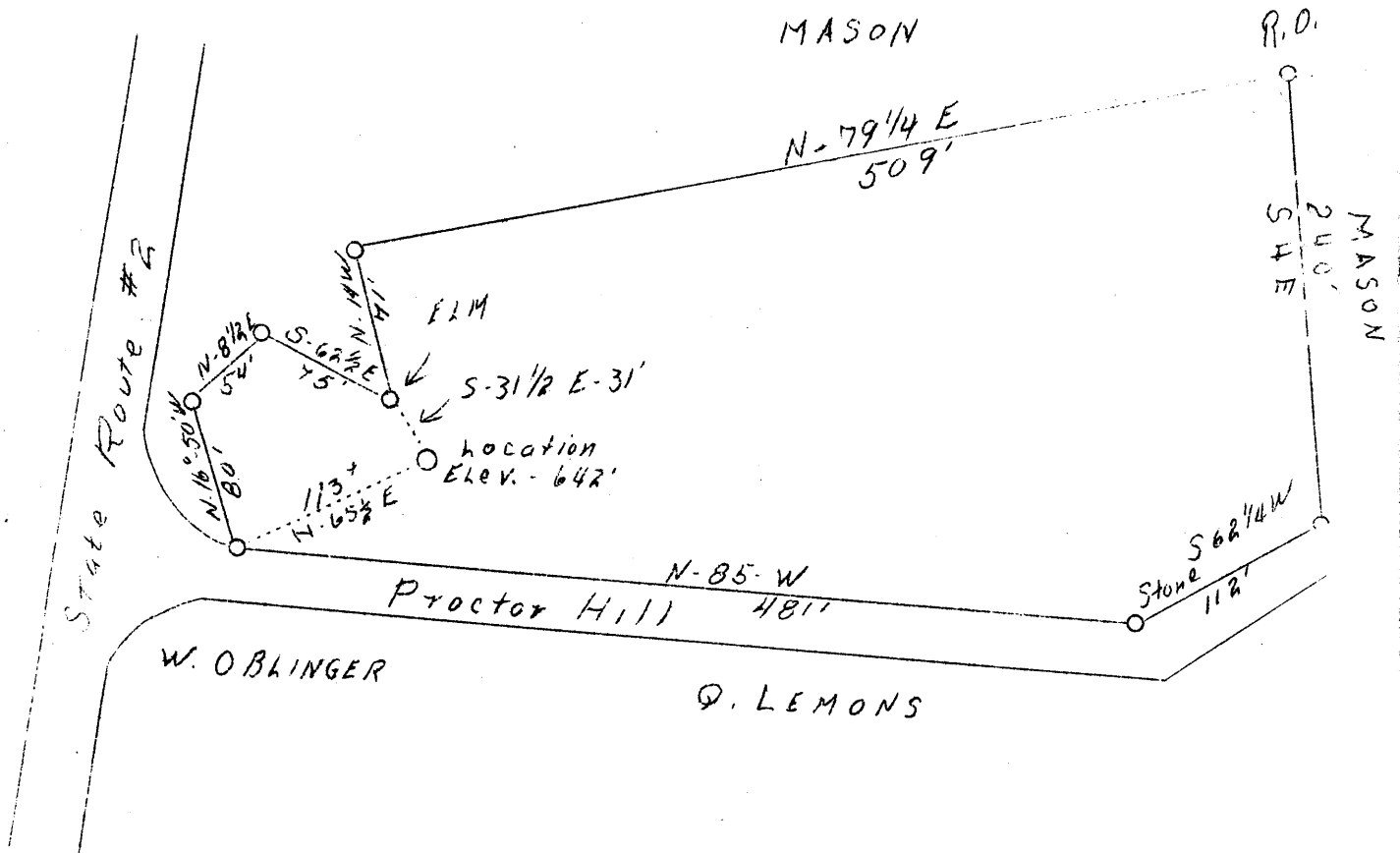
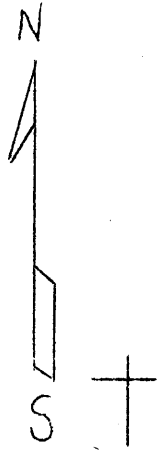


LATITUDE 39°45'

LONGITUDE 85°045'



3.88 W
2.8 S

*ADD
10/27/38*

New Location

Company	Wasmuth, Callahan Gas Co.
Address	Glendale W.Va.
Farm	J.W. Monroe Estate
Tract	1
Acres	2
Lease No.	1
Well (Farm) No.	1
Elev. (Spirit Level)	642
Quadrangle	New Martinsville N.E.
County	Wetzel
District	Proctor
Eng.	F.W. Persons
Eng. Reg. No.	203
File No.	7
Date	8/14/38
Scale	100' - 1"

STATE OF WEST VIRGINIA
 Department of Mines
 OIL AND GAS DIVISION
 Charleston

WELL LOCATION MAP

File No. Wet-200

x Denotes location of well on U.S. Topographic Maps, scale 1 to 62,500, latitude and longitude lines being represented by border lines as shown.

-n Denotes one inch spaces on border line of original tracing.