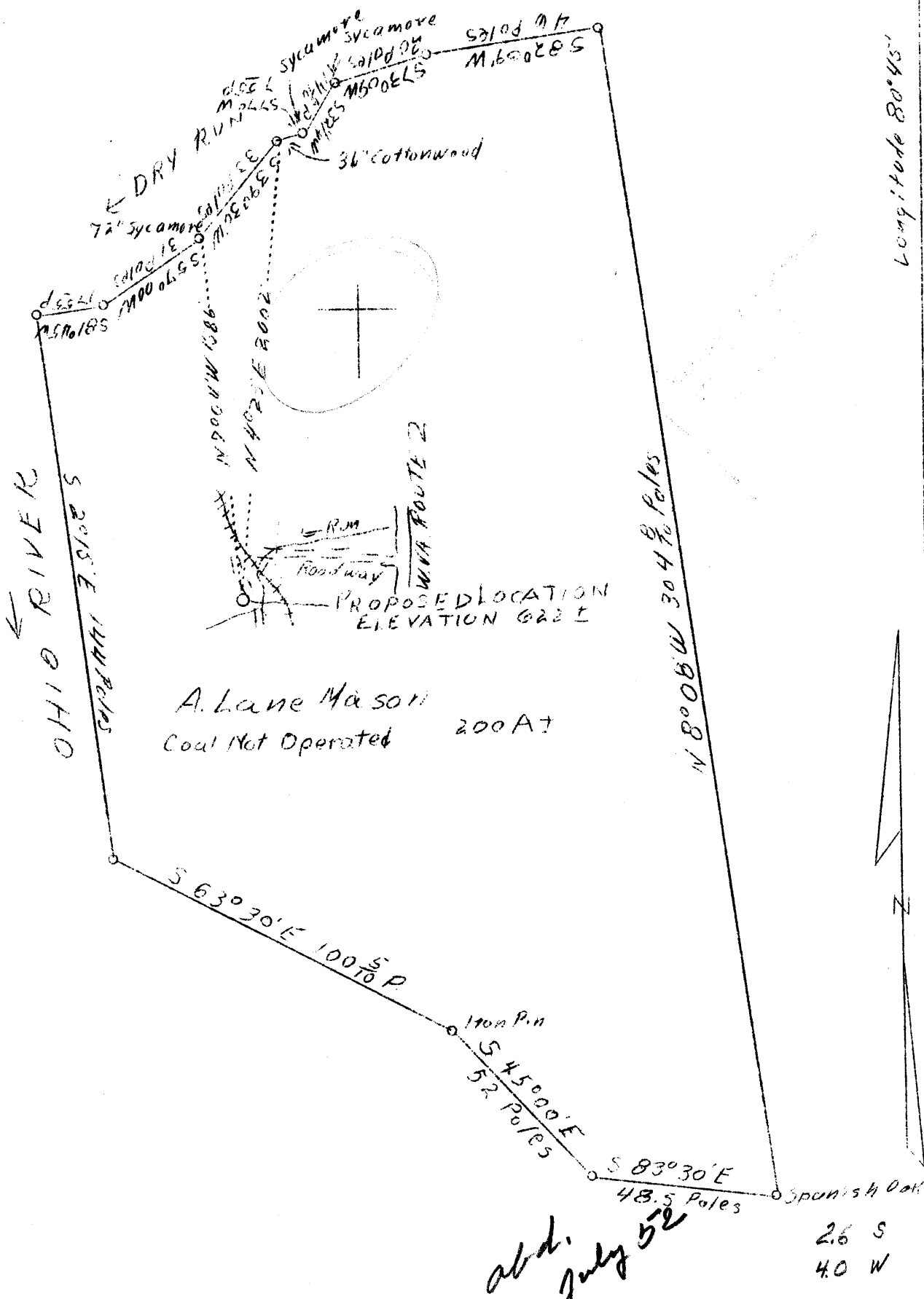


Latitude 39° 45'

Longitude 80° 45'



A. Lane Mason  
 Coal Not Operated 200 A<sup>+</sup>

abd. July 52

26 S  
 40 W

Company	Hazlett Bros. & Conley
Address	74-6th St. McMechen, W. Va.
Farm	A. Lane Mason
Tract	-
Acres	217 plus
Well (Farm) No.	Three
Quadrangle	New Martinsville N.E.
County	Wetzel
District	Proctor
Engineer	Walter W. Stegman
Eng. Reg. No.	394
File No.	O. W.
Date	August 8, 1938
Scale	1" = 600'

STATE OF WEST VIRGINIA  
 Department of Mines  
 OIL & GAS DIVISION  
 Charleston

WELL LOCATION MAP  
 File No. Wet-192

x Denotes location of well on U. S. Topographic Maps, scale 1 to 62,500, latitude and longitude lines being represented by border lines as shown.  
 - Denotes one inch spaces on border line of original tracing.

62-677

WEST VIRGINIA DEPARTMENT OF MINES

OIL & GAS DIVISION

WELL RECORD

Permit No. Wet-192

Gas Well

New Martinsville Quad.

CASING & TUBING

Company	Hazlett Bro. & Conley	10	60	60
Address	6th St. McMechen, W. Va.	8-1/4	155	155
Farm	A. Lane Mason ACRES 235	6-5/8	520	520
Well No.	Three ELEV. - 622'			
District	Proctor County Wetzel			
Surface & Mineral	A. Lane Mason, Proctor, W. Va.			
Drilling commenced	August 20, 1938			
Drilling completed	August 29, 1938			
Shot	-			
Open Flow	40/10ths Merc. in 2-inch 1,107,000 cu			
Rock Pressure	130 lbs. 24 hrs.			
Fresh Water	80			
Salt Water	-			

Formation	Color	HTV. S	TOP	Base	Result	Formation	Color	HTV. S	TOP	Base	Result
Gravel			00	60							
Lime Shells	white	h	60	100							
Lime	white	h	100	122							
M T Coal	black	s	122	123							
Lime Shells	white	h	123	130							
Lime	white	h	130	212							
P. B. Coal	black	s	212	213							
Shale	grey	s	213	225							
Lime	white	h	225	250							
Shale	grey	s	250	300							
Lime	white	h	300	330							
Red rock	red	s	330	440							
Lime	white	h	440	455							
Sand	grey	h	455	485							
Shale	grey	s	485	510							
Sand	dark	h	510	525							
Sand 1st Cr.	grey	s	525	535	Gas 525						