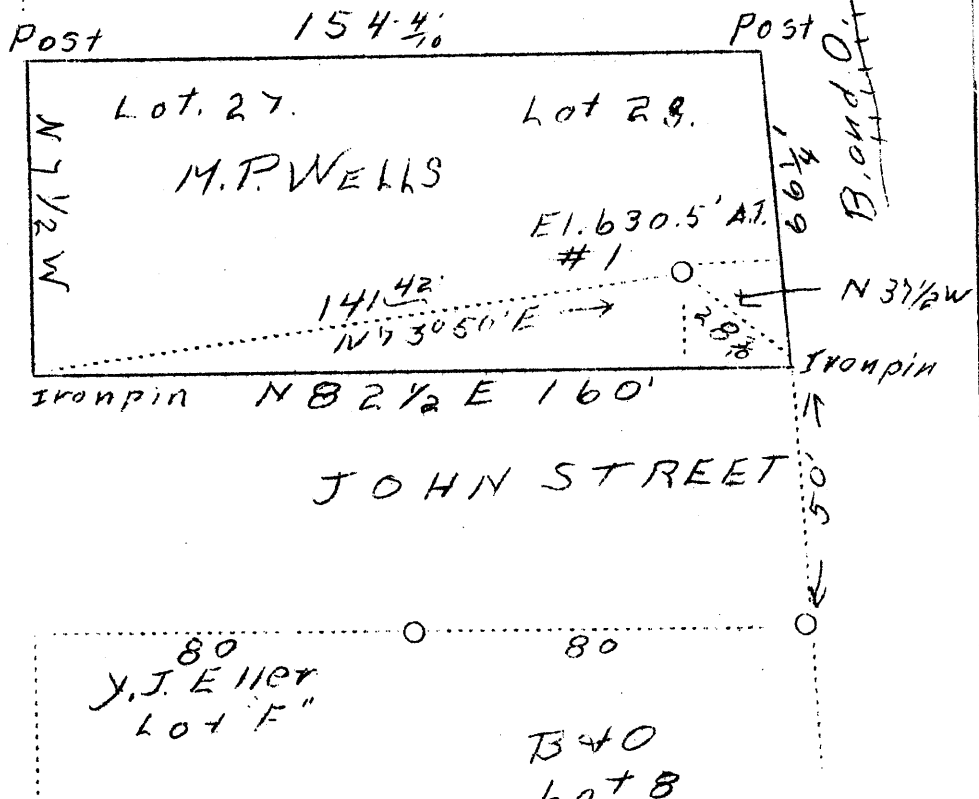


LATITUDE 39° 43'

LONGITUDE 80° 49'



OBLINGER ESTATE



M.E. CHURCH

MAIN STREET

80
Y.J. Eller
Lot F

B & O
Lot B

1.4 S
1.6 W

New Location

Company	George Myers
Address	New Martinsville, W. Va.
Farm	Lots 27-28, M. P. Wells Proctor, W. Va.
Well (Farm) No.	One
Elevation (SP)	630-5/10" A.T.
Quadrangle	New Martinsville
County	Wetzel
District	Proctor
Engineer	F. W. Parsons
Eng. Reg. No.	203
File No.	W
Date	July 28, 1938
Scale	1" = 40'

STATE OF WEST VIRGINIA
 Department of Mines
 OIL & GAS DIVISION
 Charleston

WELL LOCATION MAP

File No. Wet-191

x Denotes location of well on U. S. Topographic Maps, scale 1 to 62,500, latitude and longitude lines being represented by border lines as shown.

- Denotes one inch spaces on border line of original tracing.

Latitude

39°45'00"

Longitude

86°47'30"

2.60s
1.71w

Topo Location

7.5' Loc. _____ 15' Loc. _____
(calc.) _____

Company George Myers

Farm MP Wells 1

15' Quad _____
(sec.)

7.5' Quad New Martinsville

District Procta

WELL LOCATION PLAT

County 103 Permit 191

WEST VIRGINIA DEPARTMENT OF MINES

OIL & GAS DIVISION

WELL RECORD

Permit No. Wet-191

Gas Well

New Martinsville Quad.

CASING & TUBING

Company	George Myers et als	6-5/8	20	200
Address	New Martinsville, W. Va.	2		533
Farm	M. P. Wells ACRES lots			
Location	Ohio River		Packer - Anchor	
Well No.	One ELEV. 630.5'		Size - 6-5/8	
District	Proctor County Wetzel		Depth set - 520	
Surface & Mineral	M.P. Wells, New Martinsville, W. Va.			
Drilling commenced	Aug. 15, 1938		Coal Encountered:	
Drilling completed	Aug. 26, 1938		At 130 & 198'	
Shot	Not shot			
Volume	470,000 c.f.			
Rock Pressure	140 lbs. 24 hrs.			
Oil	None			
Fresh Water	None			
Salt Water	None			

FORMATION Color ^{Has} TOP Base RESULT

FORMATION Color ^{Has} TOP Base RESULT

FORMATION	Color	^{Has}	TOP	Base	RESULT	FORMATION	Color	^{Has}	TOP	Base	RESULT
Soil	brn.	s	0	56							
Lime	wh.	h	56	86							
Slate	wh.	s	86	96							
Lime	wh.	h	96	114							
Slate	blk.	s	114	130							
Coal MPIN	blk.	s	130	132							
Lime	wh.	h	132	148							
Slate	blk.	s	148	174							
Lime	wh.	h	174	198							
Coal-Pgh.	blk.	s	198	200							
Lime	wh.	h	200	215							
Slate	wh.	s	215	240							
Lime	wh.	h	240	255							
Sand	wh.	h	255	270							
Sand	wh.	s	270	275							
Lime	wh.	h	275	315							
Slate	wh.	s	315	335							
Lime	wh.	h	335	345							
Red Rock	red.	s	345	385							
Lime	wh.	h	385	390							
Sand	wh.	s	390	395							
Lime	wh.	h	395	410							
Slate	wh.	s	410	430							
Red Rock	red	s	430	440							
Slate	blue	s	440	464							
Sand	wh.	h	464	500							
Slate	blk.	s	500	520							
Sand	wh.	h	520	533	Gas 523-533	Cow Run					