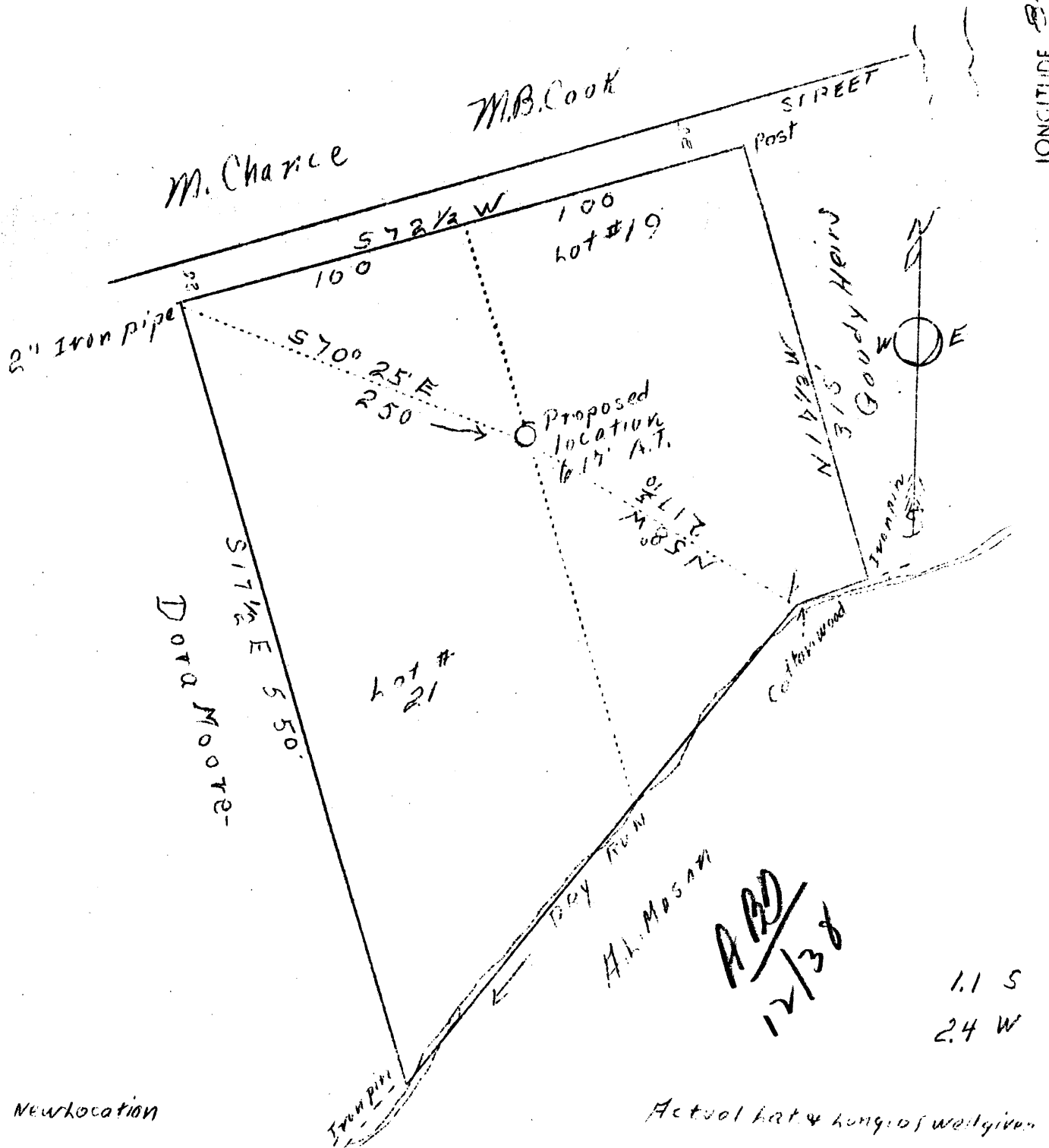


LATITUDE 39° 43'

LONGITUDE 80° 49'



Company J. T. Fonner & T. C. Kingsley
 Address Middlebourn, W. Va.
 Farm R. B. Chance
 Lots 19 & 21
 Acres 3-85/100
 Lease No. One
 Well (Farm) No. One
 Elevation (S.P.) 617' A.T.
 Quadrangle New Martinsville (NE)
 County Wetzel
 District Proctor
 Engineer F. J. Parsons
 Eng. Reg. No. 203
 File No. W
 Date August 1, 1938
 Scale 1" = 100'

STATE OF WEST VIRGINIA
 Department of Mines
 OIL & GAS DIVISION
 Charleston

WELL LOCATION MAP

File No. Wet-190

x Denotes location of well on U. S. Topographic Maps, scale 1 to 62,500, latitude and longitude lines being represented by border lines as shown.

- Denotes one inch spaces on border line of original tracing.

Latitude

Longitude

+
207s
1.73w

Topo Location

7.5' Loc. _____ 15' Loc. _____
(calc.) _____

Company Forner & Kingsley

Farm RB Chance

15' Quad _____
(sec.)

7.5' Quad New Martinsville

District Proctor

WELL LOCATION PLAT

County 103 **Permit** 190

WEST VIRGINIA DEPARTMENT OF MINES

OIL & GAS DIVISION

WELL RECORD

Permit No. Wet-190

Well

New Martinsville Quad.

CASING & TUBING

Company J. C. Fenner & T. C. Kingsley
 Address Middlebourne, W. Va.
 Farm R. B. Chance ACRES -
 Location Ohio River
 Well No. - ELEV. 617'
 District Proctor County Wetzel
 Surface & Mineral -
 Address Proctor, W. Va.
 Drilling commenced -
 Drilling completed -
 Shot -
 Open Flow -
 Volume -
 Rock Pressure -
 Oil -
 Water -

10 50
 8-1/4 210

Formation Color ^{Mar} s TOP Base Result Formation Color ^{Mar} s TOP Base Result

Soil	brown	s	0	10						
Sand	brown	s	10	56						
Lime	white	h	56	86	water					
Slate	white	s	86	96						
Lime	white	h	96	114						
Slate	black	s	114	130						
✓ Coal MT	black	s	130	132						
Lime	white	h	132	148						
Slate	dark	s	148	160						
Lime	white	h	160	174						
Slate	white	s	174	190						
Lime	white	h	190	195						
Slate	black	s	195	198						
✓ Coal PBY	black	s	198	200						
Lime	white	h	200	215						
Slate	white	s	215	240						
Lime	white	h	240	255						
Sand	white	h	255	270						
Sand	white	s	270	275						
Lime	white	s	275	285						
Shale	white	s	285	295						
Lime	white	s	295	315						
Slate	white	s	315	325						
Slate	white	s	325	335						
Lime	white	h	335	345						
Red R.	red	s	345	385						
Lime	white	h	385	390						
Sand	white	s	390	395						
Lime	white	h	395	410						
Slate	white	s	410	430						
Red R.	red	s	430	440						
Slate	blue	s	440	464						
Top Sand	white	h	464	509						
✓ Coal B&C	black	s	509	510						
Shale	dark	s	510	520						
Lime	white	h	520	530						
✓ Sand (P.C.R.)	white	h	530	540						
Slate	dark	s	540	565						
✓ Sand L.D?	white	h	565	583	DRY					