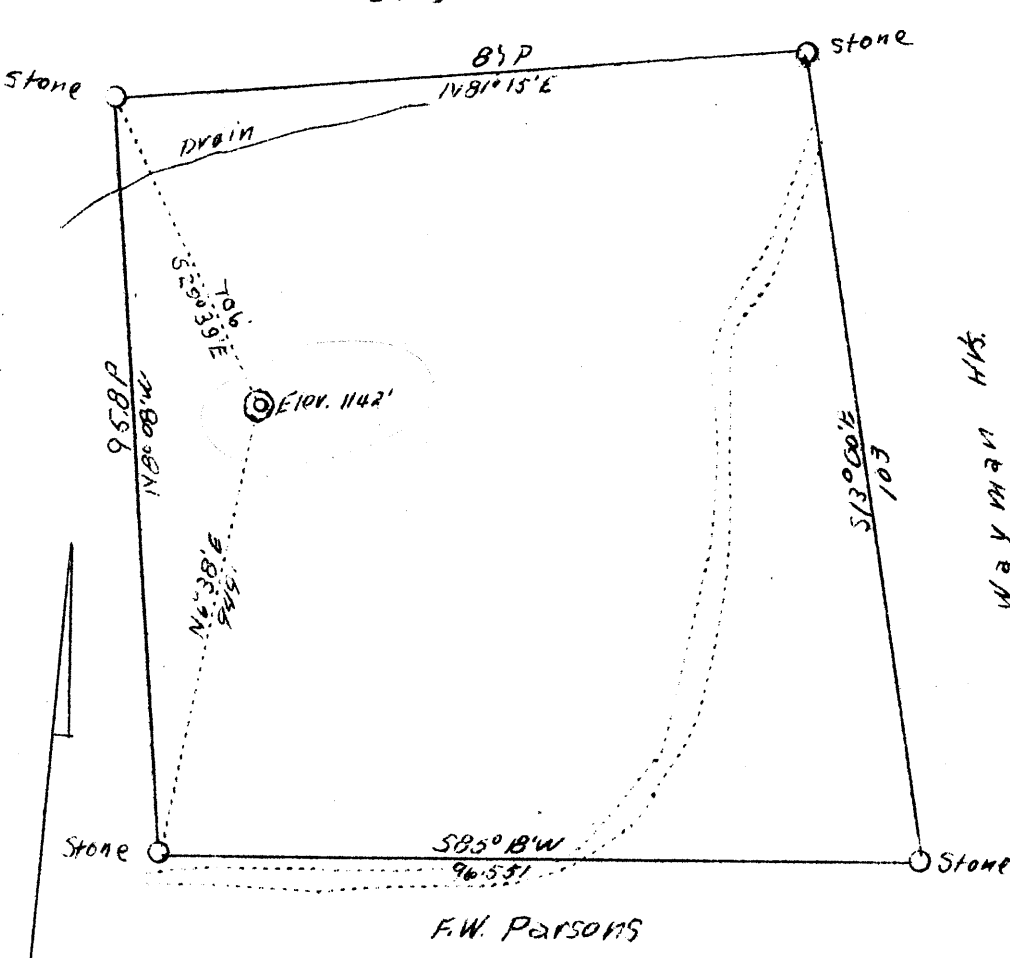


LATITUDE 39° 45'

LONGITUDE 80° 45'



abd. aug 52

2.6 S
3.6 W

Company	J. I. McIntire
Address	% Training School Vineland, N. J.
Farm	C. C. Parsons
Tract	1
Acres	57.3
Lease No.	2
Well (Farm) No.	1
Quadrangle	New Martinsville N.E.
County	Netzel
District	Proctor
Engineer	G. L. McIntire
Eng. Reg. No.	-
Date	7-21-38
Scale	1" = 400'

Cl-1142'

STATE OF WEST VIRGINIA
 Department of Mines
 OIL & GAS DIVISION
 Charleston

W E L L L O C A T I O N M A P

File No. WRE-186

X Denotes location of well on U. S. Topographic Maps, scale 1 to 62,500, latitude and longitude lines being represented by border lines as shown.

- Denotes one inch spaces on border line of original tracing.

WEST VIRGINIA DEPARTMENT OF MINES

OIL & GAS DIVISION

WELL RECORD

Permit No. West-186

Gas Well

New Martinsville Quad.

CASING & TUBING

Company	J. Thomas McIntire	10	10	10
Address	Vineland, N. J.	8-1/4	180	
Farm	Clark C. Parsons ACRES 53	6-5/8	650	
Location	Ohio River	5-3/16	1065	1065
Well No.	One ELEV. 1140 1142'	2	1091	1091
District	Proctor - Wetzel County			
Surface & Mineral	Clark C. Parsons, Proctor, W. Va.			Packer - Anchor
Drilling commenced	Sept. 2, 1938			Size - 5"
Drilling completed	Sept. 21, 1938			Depth set - 1000
Open Flow	115/10ths Water in 2-inch			
Volume	454,000 c.f.			COAL ENCOUNTERED:
Rock Pressure	138 lbs. 24 hrs.			Feet Inches
Water	-			364
				676
				755

Formation Color ^{Max} TOP Base Result Formation Color ^{Max} TOP Base Result

Formation	Color	Max	TOP	Base	Result	Formation	Color	Max	TOP	Base	Result
Clay		0		5							
Red Rock		5		15							
White Shale		15		50							
Red Rock		50		50							
Sand		60		78							
Red Rock		78		93							
Black Shale		93		127							
Red Rock		127		142							
Black Shale		142		182							
Red Rock		182		199							
Sand		199		214							
Black Shale		214		284							
Red Rock		284		294							
Sand		294		309							
Black Shale		309		359							
Washington Coal		359		364							
Lime		364		369							
Sand		369		420							
Coal		420		425							
Black Shale		425		500							
Red Rock		500		530							
Sand		530		545							
Gray Shale		545		555							
Lime		555		674							
Maple Town Coal		674		676							
Lime		676		707							
Gray Shale		707		730							
Lime		730		744							
Black Shale		744		755							
Pittsburgh Coal		755		760							
Black Shale		760		780							
Sand		780		820							
Gray Shale		820		858							
Red Rock		858		868							
Black Shale		868		880							
Red Rock		880		1000							
Black Shale		1000		1021							
Sand		1021		1055							
Sand Shale		1055		1065							
Lime		1065		1071							
Sand		1071		1091		Gas 1082 - 1091					
Total Depth				1091							