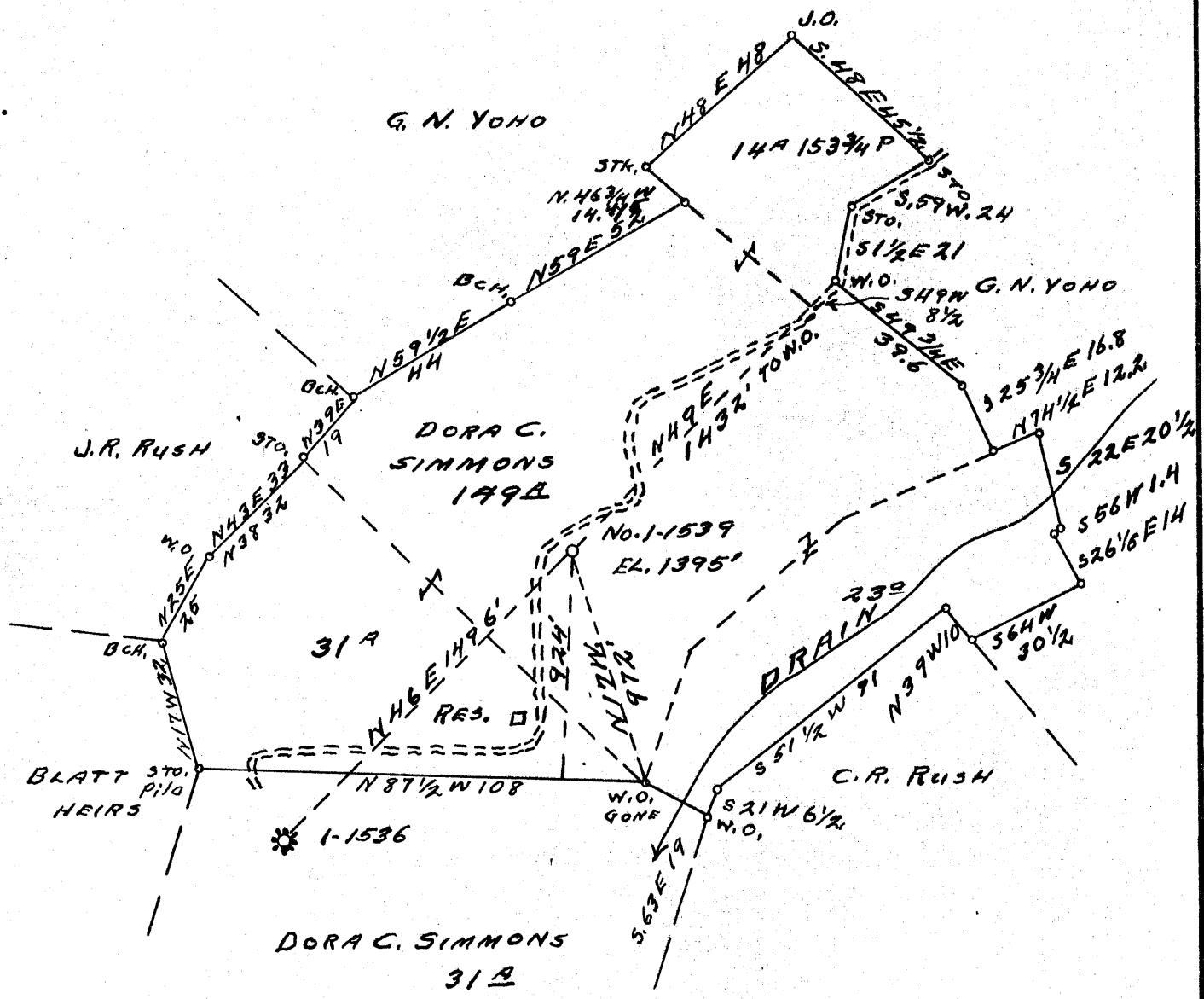


1 2 3

Latitude 39° 45'

Longitude 80° 35'

2.51 S
4.09 W



4-7-55 - N&W - MANUFACTURES LGE & HEAT CO - WELL 15300

Company CARNEGIE NAT. GAS COMPANY
 Address PITTSBURGH-PENNA.
 Farm DORA C. SIMMONS
 Tract TWO Acres 149 Lease No. E-1502277
 Well (Farm) No. 1 Serial No. 1539
 Elevation (Spirit Level) 1395'
 Quadrangle LITTLETON N.W. 1/4
 County WETZEL District PROCTOR
 Engineer D.T. Britton
 Engineer's Registration No. _____
 File No. _____ Drawing No. _____
 Date 6-21-1938 Scale 1"=40P.=660'

STATE OF WEST VIRGINIA
 DEPARTMENT OF MINES
 OIL AND GAS DIVISION
 CHARLESTON

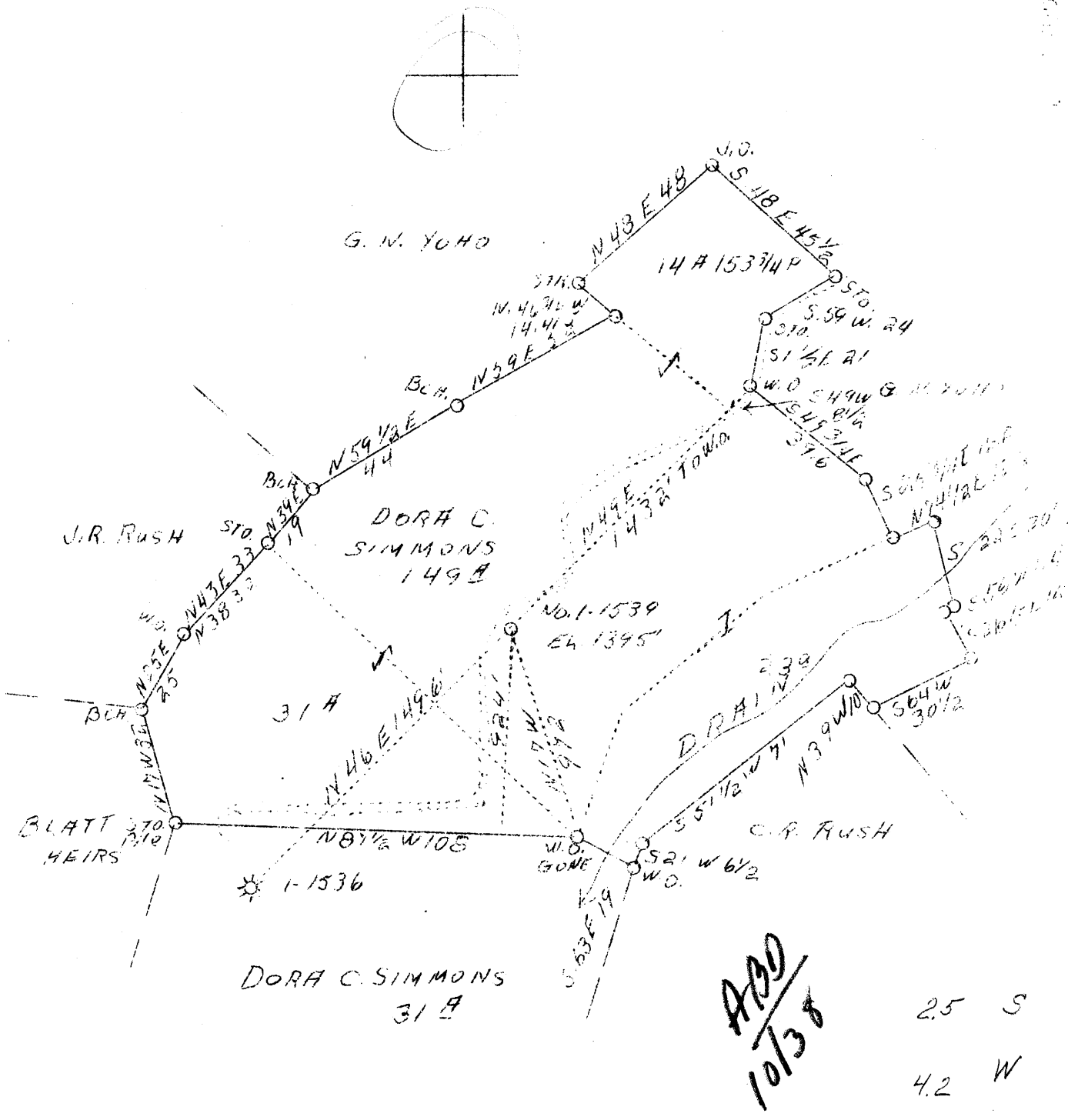
WELL LOCATION MAP
 FILE NO. Wet-18.3-REDRILL

† Denotes location of well on United States Topographic Maps, scale 1 to 62,500, latitude and longitude lines being represented by border lines as shown.

- Denotes one inch spaces on border line of original tracing.

LATITUDE 39° 45'

80° 35'



Company Carnegie Natural Gas Co.
 Address Pittsburgh, Pa.
 Farm Dora C. Simmons
 Tract Two
 Acres 149
 Lease No. E-15029-77
 Well (Farm) No. 1
 Serial No. 1539
 Elevation 1395' (Spirit Level)
 Quadrangle Littleton N. W. 1/4 N.C.
 County Wetzell
 District Proctor
 Engineer D. T. Britton
 Date June 21, 1938
 Scale 1" = 40 P. = 660'

STATE OF WEST VIRGINIA
 Department of Mines
 OIL & GAS DIVISION
 Charleston

WELL LOCATION MAP

File No. Wet-183

X Denotes location of well on U. S. Topographic Maps, scale 1 to 62,500, latitude and longitude lines being represented by border lines as shown.

- Denotes one inch spaces on border line of original tracing.



STATE OF WEST VIRGINIA
DEPARTMENT OF MINES
OIL AND GAS DIVISION

WELL RECORD

Quadrangle Sutton

Permit No. WET-183-R

Scope
Oil or Gas Well GAS
(KIND)

Company THE MANUFACTURERS LIGHT AND HEAT COMPANY

Address 800 UNION TRUST BLDG., PGH., PA.

Farm Dora C. Simmons Acres 149

Location (waters) _____

Well No. 4435 (F-15300) Elev. 1395'

District Proctor County Wetzel

The surface of tract is owned in fee by _____

Address _____

Mineral rights are owned by _____

Address _____

Drilling commenced April 2, 1955

Drilling completed June 28, 1955

Date Shot _____ From _____ To _____

With _____

Open Flow 0 /10ths Water in _____ 3/8 Inch

_____ /10ths Merc. in _____ Inch

Volume 0.000 Cu. Ft.

Rock Pressure _____ lbs. _____ hrs.

Oil _____ bbls., 1st 24 hrs.

Fresh water _____ feet _____ feet

Salt water _____ feet _____ feet

| Casing and Tubing | Used in Drilling | Left in Well | Packers |
|-------------------|------------------|--------------|----------------|
| Size | | | Kind of Packer |
| 16 | | | |
| 13 | | | |
| 10 | | 294'2" | Size of |
| 8 1/4 | | 1334'9" | |
| 7 | | 2008'0" | Depth set |
| 5 3/16 | | 2097'5" | |
| 3 | | | Perf. top |
| 2 | | | Perf. bottom |
| Liners Used | | | Perf. top |
| | | | Perf. bottom |

CASING CEMENTED _____ SIZE _____ No. Ft. _____ Date _____

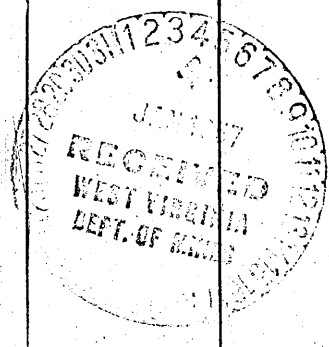
COAL WAS ENCOUNTERED AT _____ FEET _____ INCHES

_____ FEET _____ INCHES _____ FEET _____ INCHES

_____ FEET _____ INCHES _____ FEET _____ INCHES

| Formation | Color | Hard or Soft | Top | Bottom | Oil, Gas or Water | Depth Found | Remarks |
|--|-------|--------------|------|--------|--------------------------|-------------|---------|
| Cleaned out to Permanent bridge Cement | | | 2715 | 2715 | Schlumberger measurement | | |
| Stone & Red Clay | | | 2685 | 2685 | | | |
| Set 6" lead plug | | | 2675 | 2675 | | | |
| Cement | | | 2400 | 2400 | | | |
| Stone & Red Clay | | | 2400 | 2390 | | | |
| Set 6" lead plug | | | 2390 | 2130 | | | |
| Stone & Red Clay | | | 2130 | 2130 | | | |
| Clg. out to Cement | | | 2130 | 2082 | | | |
| Total Depth | | | 2130 | 2130 | | | |
| | | | 2130 | 2119 | | | |

Reconditioned for storage on Work order No. 1551-L-854-4



WEST VIRGINIA DEPARTMENT OF MINES

OIL & GAS DIVISION

WELL RECORD

Well No. Wet-183

Littleton N.W. Quad.

Gas Well

CASING & TUBING

| | | | | |
|--------------------|---------------------------|-----------------------------------|--------|-------|
| Company | Carnegie Natural Gas Co. | 10 | 293-5 | 293-5 |
| Address | Hundred, W. Va. | 8-1/4 | 1317 | 1317 |
| Farm | Dora C. Simmons ACRES 149 | 6-5/8 | 1999 | 1999 |
| Location | Lyn Camp Run | COAL ENCOUNTERED: | | |
| Well No. | 1-1539 ELEV. 1395 | Feet | Inches | |
| District | Proctor County Wetzel | 997 | 24 | |
| Surface & Mineral | See Below | 1098 | 48 | |
| Drilling commenced | Aug. 2, 1938 | SURFACE & MINERAL RIGHTS OWNERS: | | |
| Drilling completed | Oct. 3, 1938 | Dora C. Simmons, Howard, W. Va. | | |
| Shot | - | Olive M. Long, R2, Jewett, O. | | |
| Open Flow | 5/10ths Water in 1-inch | L.W. Simmons, Howard, W. Va. | | |
| Volume | 26,443 c. f. | R. G. Simmons R#1 Glen Easton W. | | |
| Rock Pressure | - | Robert Simmons, Howard, W. Va. | | |
| Fresh Water | 1098-1102 | Mrs. Elsie Mason, Cameron, W. Va. | | |
| Salt Water | 1920 | Amy F. Simmons, Howard, W. Va. | | |

Formation Color ^{Har} TOP Base Result Formation Color ^{Har} TOP Base Result

| | | | | | | | | | |
|--------------|-------|-----|------|------|-----------------|-------|---------|---------|------|
| Clay | yel. | s | 0 | 10 | Rock | red | s | 1140 | 1155 |
| Sand | light | h | 10 | 20 | Slate | dark | s | 1155 | 1175 |
| Slate | light | s | 20 | 50 | Lime | white | h | 1175 | 1210 |
| Lime | white | med | 50 | 70 | Slate | dark | s | 1210 | 1240 |
| Slate | dark | s | 70 | 95 | Rock | red | s | 1240 | 1270 |
| Lime | light | h | 95 | 120 | Slate | light | s | 1270 | 1300 |
| Slate | dark | s | 120 | 155 | Rock | red | s | 1300 | 1317 |
| Lime | light | med | 155 | 185 | Lime | light | med | 1317 | 1330 |
| Slate | dark | s | 185 | 225 | Lime | gray | s | 1330 | 1350 |
| Rock | red | s | 225 | 260 | Lime | light | h | 1350 | 1360 |
| Slate | dark | s | 260 | 315 | Slate | dark | s | 1360 | 1380 |
| Rock | red | s | 315 | 325 | Rock | red | s | 1380 | 1407 |
| Sand | dark | med | 325 | 335 | Slate Shells | dark | med | 1407 | 1450 |
| Rock | red | s | 335 | 355 | Lime | light | " | 1450 | 1835 |
| Lime | white | h | 355 | 375 | Slate | dark | s | 1535 | 1580 |
| Slate Shells | lt. | s | 375 | 420 | Big Dunkard | light | h | 1580 | 1660 |
| Slate | white | s | 420 | 440 | Slate | dark | s | 1660 | 1715 |
| Slate Lime | light | med | 440 | 490 | Gas Sand | dark | med | 1715 | 1740 |
| Lime | light | med | 490 | 520 | Slate | dark | s | 1740 | 1815 |
| Rock | red | s | 520 | 540 | 1st Salt S. | light | bkn | 1815 | 1840 |
| Lime | lt. | h | 540 | 548 | Slate Shells | dark | s | 1840 | 1895 |
| Slate Shells | Dr. | s | 548 | 594 | 2nd Salt S. | dark | h | 1895 | 1940 |
| Lime | light | h | 594 | 610 | Slate | dark | s | 1940 | 1990 |
| Slate | dark | s | 610 | 630 | Lime | dark | med | 1990 | 2010 |
| Lime | white | h | 630 | 642 | Sand and Salt | dark | med | 2010 | 2023 |
| Slate Shells | Dr. | s | 642 | 665 | Slate | dark | s | 2023 | 2090 |
| Lime | white | h | 665 | 700 | Maxton Sand | dark | h | 2090 | 2118 |
| Slate | dark | s | 700 | 735 | Slate | dark | s | 2118 | 2140 |
| Lime | light | h | 735 | 753 | Sand | dark | bkn | 2140 | 2155 |
| Slate | dark | s | 753 | 765 | Slate | dark | s | 2155 | 2170 |
| Lime | white | med | 765 | 788 | Sand | dark | h | 2170 | 2235 |
| Slate | dark | s | 788 | 800 | Big Lime | dark | h | 2235 | 2276 |
| Lime | light | med | 800 | 820 | Injun Sand | dark | bkn | 2276 | 2480 |
| Rock | red | s | 820 | 835 | Slate Shells | white | s | 2480 | 2620 |
| Lime | dark | med | 835 | 848 | Lime | white | h | 2620 | 2640 |
| Slate | dark | s | 848 | 858 | Slate Shells | light | s | 2640 | 2930 |
| Lime | white | h | 858 | 874 | Rock | red | s | 2930 | 2940 |
| Slate | dark | s | 874 | 880 | Slate Shells | White | s | 2940 | 3078 |
| Lime | white | med | 880 | 910 | Gordon Sand | white | h | 3078 | 3105 |
| Rock | red | s | 910 | 930 | Slate Shells | dark | s | 3105 | 3415 |
| Lime | white | h | 930 | 980 | Total Depth | | | | 3415 |
| Slate Shells | " | med | 980 | 990 | | | | | |
| Coal Maple | Black | s | 997 | 999 | Water 1098-1102 | 3 | bailers | per hr. | |
| Lime | white | h | 999 | 1030 | " 1920-1925 | hole | full | | |
| Slate Shells | Dark | s | 1030 | 1060 | | | | | |
| Lime | white | h | 1060 | 1082 | | | | | |
| Slate | dark | s | 1082 | 1098 | | | | | |
| Coal Pgh. | black | s | 1098 | 1102 | | | | | |
| Slate Shells | Dr. | med | 1102 | 1140 | | | | | |

Handwritten notes and calculations on the right side of the table, including numbers like 2235, 1395, and 840.

G-3374
5/10 W
in 1" op.

1395
997
378

1098
1098
297C

1102
1098
297C