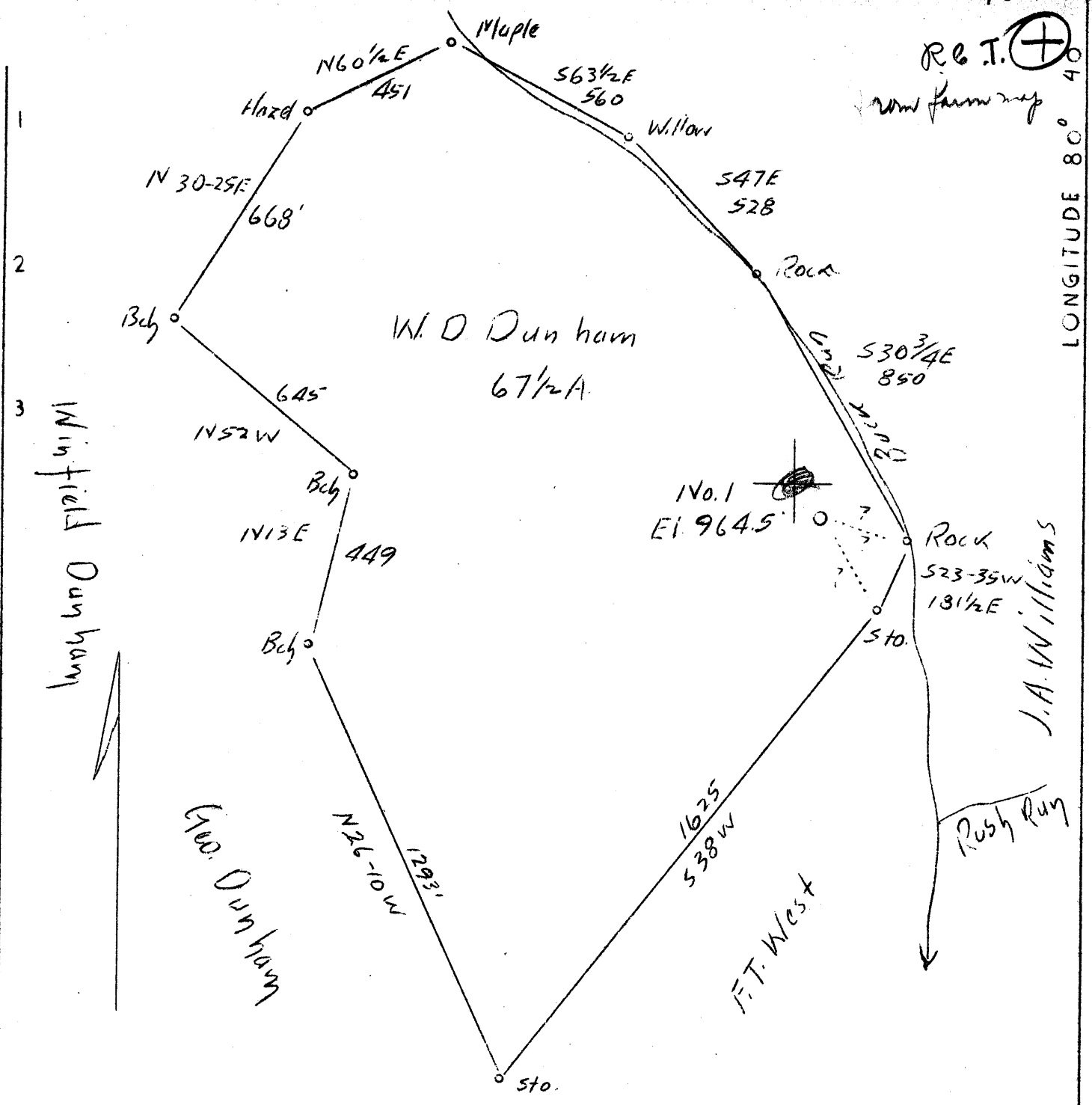


LATITUDE 39

40

LONGITUDE 80° 40'



R.E.T. (+)

from farm map

W.D. Dunham  
67 1/2 A.

No. 1  
Elev. 964.5

Rock  
523-35W  
13 1/2 E

J.A. Williams

Rush Run

F.T. West

Winfield Dunham

Geo. Dunham

0.3 W  
0.58 S.

Wetzel  
Acres 52

Company	G.F.Eagon
Address	New Martinsville, W.Va.
Farm	W.D.Dunham
Tract	Acres 67 1/2 Lease No.
Well (Farm) No.	1 Serial No.
Elevation ( Spirit Level)	964.5
Quadrangle	New Martinsville Littleton W.V.
County	Wetzel District Proctor
Engineer	F.W.Parsons
Engineer's Registration No.	203
File No.	Drawing No.
Date	Nov. 24, 1937 Scale 1"=400'

STATE OF WEST VIRGINIA  
 Department of Mines  
 OIL AND GAS DIVISION  
 CHARLESTON

WELL LOCATION MAP

File No. WET-175

+ Denotes location of well on United States Topographic Maps, scale 1 to 62,500, latitude and longitude lines being represented by border lines as shown.

— Denotes one inch spaces on border line of original tracing.