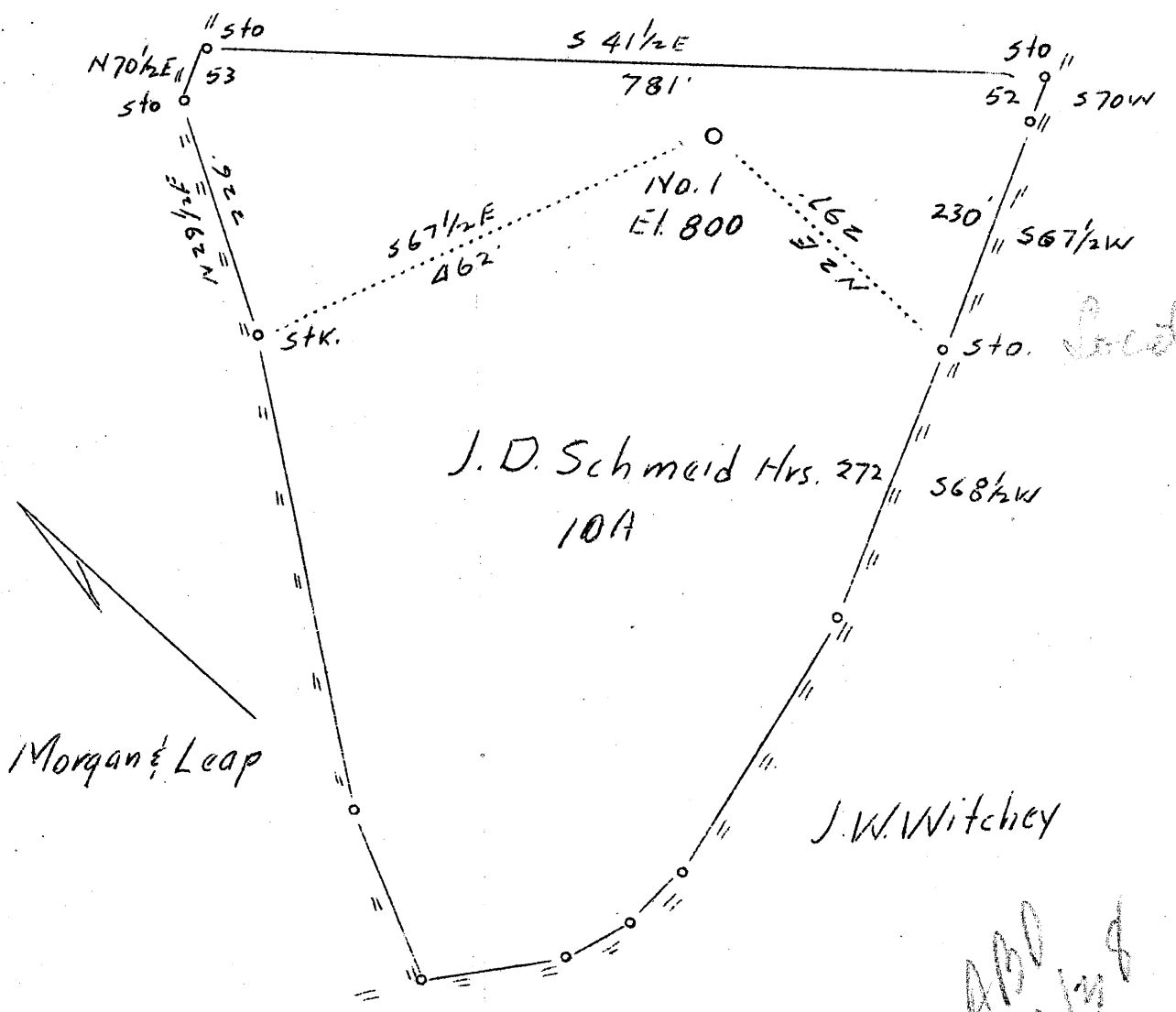


LATITUDE 39° 36'

LONGITUDE 80° 51'

Morgan, Leap & Brast.



Company Braden Hugus & et al
 Address Wheeling, W.Va.
 Farm J.D.Schmeid Heirs
 Tract One Acres 10 Lease No.
 Well (Farm) No. 1 Serial No.
 Elevation (Spirit Level) 800'
 Quadrangle New Martinsville (L)?
 County Wetzell District Magnolia
 Engineer J.M.Cochran
 Engineer's Registration No. Co.Surveyor
 File No. Drawing No.
 Oct. 12, 1937 Scale 1"-165'

STATE OF WEST VIRGINIA
 Department of Mines
 OIL AND GAS DIVISION
 CHARLESTON

WELL LOCATION MAP
 File No. WVET-173

+ Denotes location of well on United States Topographic Maps, scale 1 to 62,500, latitude and longitude lines being represented by border lines as shown.
 — Denotes one inch spaces on border line of original tracing.

Magnolia District, Wetzel County, W. Va.
By Braden, Hagan, et al., 1212 Indiana Ave., Chester, W. Va.
Drilled under permit Wet-173.
On 10 acres, on Fishing Creek.

Elevation.....800' J.
Surface owned by J. B. Schmidt heirs, New Martinsville, W. Va., and
minerals by Morgan, Leep, and Brant, New Martinsville, W. Va.
Drilling commenced Nov. 5, 1937; completed, Dec. 14, 1937.

Fresh water at 1630, 3 boilers.
10" casing, 956'; 8 1/2", 1135'; 6 1/2", 1672'; all pulled?
Dry hole? Completion report to Dept. of Mines filed Dec. 27, 1937
(not dated or signed).

Record to 1007 from Mrs. Griffith Sept. 2, 1938.
Located 3.45 mi. S. of 39° 40' and 0.02 mi. W. of 80° 50' - C - New
Martinsville Quadrangle.

	Top.	Bottom.
Lime, hard	135	195
Slate, soft	195	500
Sand, hard	500	535
Slate, soft	535	539
✓ Coal Sewickley	539	541
Slate, soft	541	550
Lime, hard	550	560
Slate and shells, soft	560	635
✓ Coal Pha	635	642
Slate, soft	642	690
Sand, hard	690	690
Slate, soft	690	730
Red rock	730	810
Slate, soft	810	825
Red rocky	825	870
Slate, blue, soft	870	890
Slate, black, soft	890	925
Red rock, soft	925	955
Lime, hard	955	965
Slate, blue	965	1020
Red rock	1020	1030
Slate, blue, soft	1030	1040
Red rock	1040	1045
Slate, blue, soft	1045	1130
Red rocky	1130	1135
Slate, blue, soft	1135	1170
Lime, hard	1170	1185
Slate, soft #	1185	1265
Sand, hard Gas Sand	1265	1308
Slate, soft	1308	1340
Sand, hard	1340	1385
Slate, soft	1385	1395
✓ Sand, hard Salt Sand - 2nd Cow Run -	1395	1530
Slate, soft	1530	1545
Lime and sand, hard	1545	1575
Slate, soft	1575	1635
✓ Maxton Sand	1635	1675
Lime and shells	1675	1715
Slate, soft	1715	1722
Sand, hard	1722	1740
✓ Pencil Cove	1740	1748
✓ Lime, hard Big Lime	1748	1808
✓ Keener Sand	1808	1840

1748
800
948

	Top.	Bottom.
✓ Broken sand	1840	1904
Sand, hard	1904	1910
Broken.....	1910	1935
Total depth		1935

Injury

[Faint, mostly illegible text, likely bleed-through from the reverse side of the page. The text appears to be a log or list of items, possibly including measurements and descriptions of well components.]