

Homer O. Renner

0.68 W  
2.39 S

Company	Null & Moorhead Gas Co.
Address	Hurdred, W. Va.
Farm	Jackson Hostuttler Hes.
Tract	One Acres 255 Serial No.
Well (Farm) No.	No. 2 Lease No.
Quadrangle	Mannington <i>Fig. 6.</i>
County	Wetzel
District	Church
Engineer	David Wood
Engineer's Registration No.	233-16-5767
File No.	Drawing No.
Date	Sept. 15, 1937 Scale 1"-400'

STATE OF WEST VIRGINIA  
 Department of Mines  
 OIL AND GAS DIVISION  
 CHARLESTON

WELL LOCATION MAP  
 File No. WV 17-172

+ Denotes location of well on United States Topographic Maps, scale 1 to 62,500, latitude and longitude lines being represented by border lines as shown.

— Denotes one inch spaces on border line of original tracing.



Latitude

Longitude

1.79s  
1.51w

Topo Location

7.5' Loc. \_\_\_\_\_ 15' Loc. \_\_\_\_\_  
(calc.) \_\_\_\_\_

Company Pure Oil Co

Farm Jackson Hostetler #2

15' Quad \_\_\_\_\_  
(sec.)

7.5' Quad Hundred

District Church

WELL LOCATION PLAT

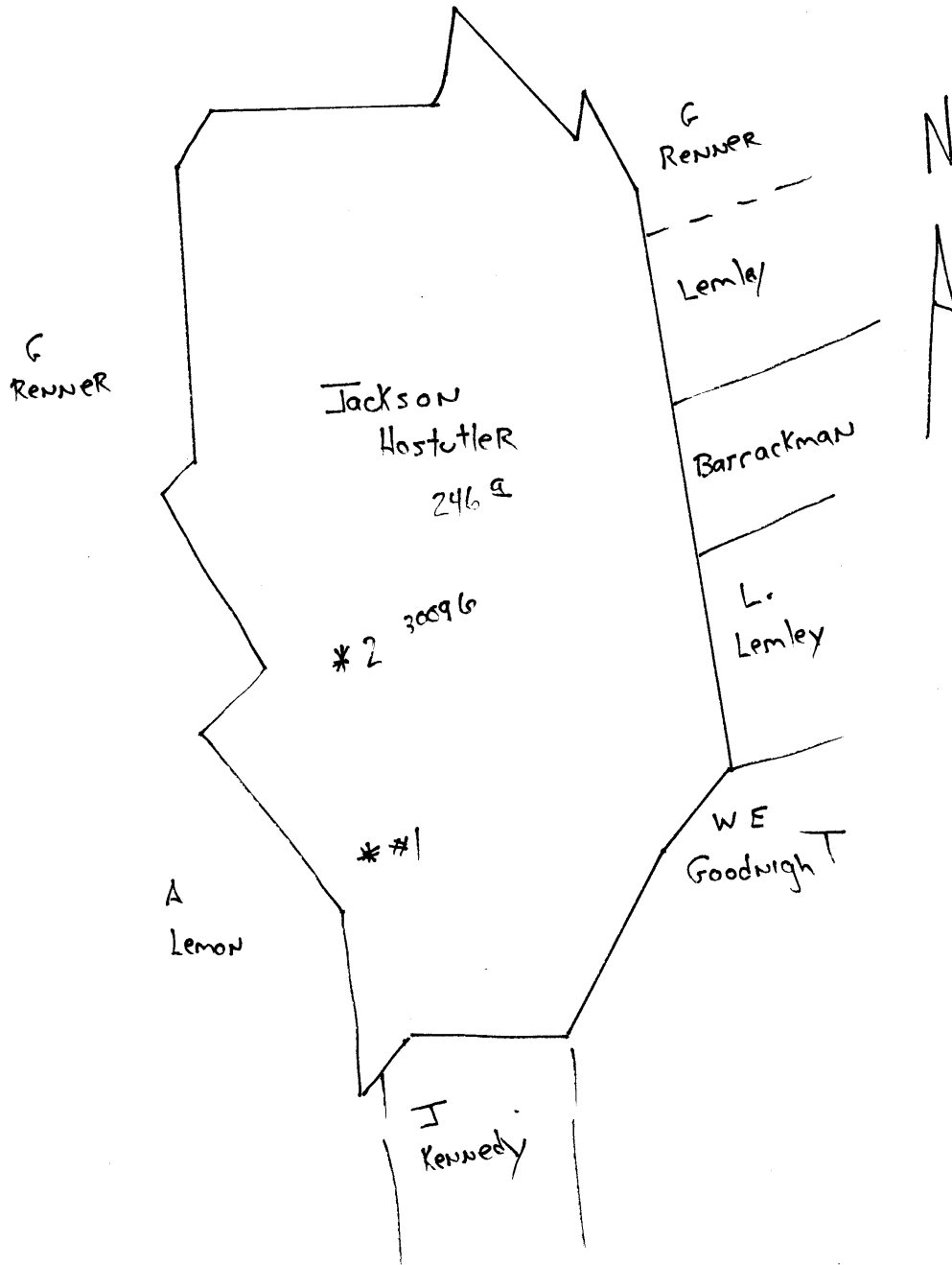
County 103 Permit 30096

NOW  
172

30096

Church

Now: WET 172



on church fork of  
fish creek

Church District, Wetzel County, W. Va.

By ~~The Pure Oil Co., Dawes, W. Va.~~

Abandoned under permit Wet-96. A

On 254.95 acres, surface owned by Hostutler Hairs et al.,  
Hundred, W. Va., and minerals by Hostutler Hairs et al.,  
and J. A. Van Sweeringen Estate et al., Hundred, W. Va.,  
and Uniontown, Pa.

Elevation, 1195' L.

Conductor, 12"; 10" casing, 220'; 8 $\frac{1}{2}$ ", 1472'; 6 $\frac{5}{8}$ ", 2216'.

Coal was encountered at 655-657, 901-905, and 995-1002'.

Remarks: All 10" and 8 $\frac{1}{2}$ " pulled.

Abandonment reported to Dept. of Mines Oct. 26, 1932.

Well was not shot.

Gas well.

Record to RGT from Mrs. Griffith Sept. 10, 1938.

	Top.	Bottom.
Waynesburg Coal	655	657
Mapletown (Sewickley) Coal	901	905
Pittsburgh Coal	995	1002
Little Dunkard Sand	1390	1441
Big Dunkard Sand	1462	1485
Gas Sand	1610	1740
1st Salt Sand	1785	1830
Slate	1830	1835
2nd Salt Sand	1835	1875
Slate	1875	1985
3rd Salt Sand (gas, 1990')	1985	2010
Slate	2010	2170
Red rock	2170	....
Big Lime	2205	2270
Big Injun Sand (gas, 2355')	2270	....
Total depth		2386

~~W 377 A~~

Church District, Wetzel County, W. Va.

By The Pure Oil Co.

Contractor, Ellis Miller.

Well started July 12, 1921; completed, Aug 30, 1921.

Gas well: 36/10 water through 2" opening; 300,000 cu. ft. gas in Big Injun Sand.

Conductor, 12"; 10" casing, 220'; 8 1/2", 1472'; 6-5/8", 2216'.  
(Perforation) Tubed: 2254'; packer set, 2256'.

Record from E. Townley, Room 2308, 35 W. Wacker Drive, Chicago, Ill., March 13, 1931.

NOV 172

	Top.	Bottom.
Pittsburgh Coal (SEM)	995	1002
Little Dunkard Sand	1390	1441
Big Dunkard Sand	1462	1485
Gas Sand	1610	1740
1st Salt Sand	1735	1830
Slate	1800	1835
2nd Salt Sand	1835	1875
Slate	1875	1985
3rd Salt Sand (gas, 1990')	1985	2010
Slate	2110	2170
Red rock	2120	
Big Lime	2205	2270
Big Injun Sand (gas, 2355')	2270	
Total depth		2386