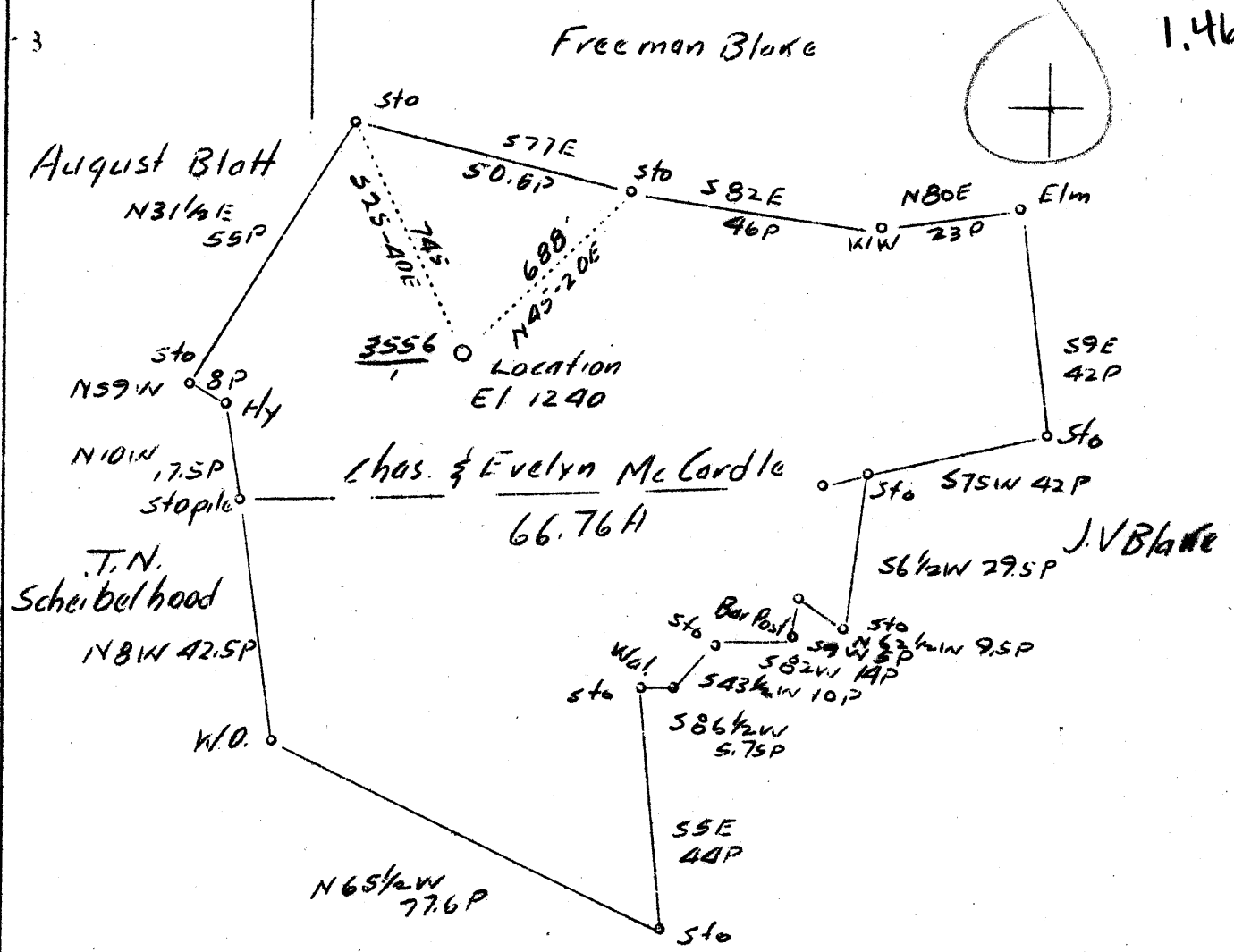


LATITUDE 39° 45'

LONGITUDE 80° 40'

3.46S  
1.46W



1.48W  
3.52

Company	The Manufacturers Light & Heat Co.
Address	Pittsburgh, Pa.
Farm	Charles & Evelyn McCardle
Tract	Acres 66.76 Lease No. 17177
Well (Farm) No.	1 Serial No. 3556
Elevation (Spirit Level)	1240'
Quadrangle	Littleton <b>NW</b>
County	Wetzel District Proctor
Engineer	A.J. Russell
Engineer's Registration No.	
File No.	Drawing No. Y-7 797
Date	Aug. 27, 1937 Scale 1"=500'

STATE OF WEST VIRGINIA  
Department of Mines  
OIL AND GAS DIVISION  
CHARLESTON

WELL LOCATION MAP  
File No. WET-168

+ Denotes location of well on United States Topographic Maps, scale 1 to 62,500, latitude and longitude lines being represented by border lines as shown.

— Denotes one inch spaces on border line of original tracing.



STATE OF WEST VIRGINIA  
DEPARTMENT OF MINES  
OIL AND GAS DIVISION

*Siddleton*

*Stoyan*

WELL RECORD

Permit No. WET - 168

Oil or Gas Well Gas

Company THE MANUFACTURERS LIGHT & HEAT COMPANY  
Address 800 Union Trust Bldg., Pgh., Penna.  
Farm Charles McCardle Acres 82  
Location (waters) \_\_\_\_\_  
Well No. 3556 Elev. 1240'  
District Proctor County Wetzel  
The surface of tract is owned in fee by Chas. McCardle  
Address \_\_\_\_\_  
Mineral rights are owned by The Mfrs. Light & Heat Co.  
800 Union Trust Bldg., Address Pgh., Penna.  
Drilling commenced August 27, 1952  
Drilling completed November 19, 1952  
Date Shot \_\_\_\_\_ From \_\_\_\_\_ To \_\_\_\_\_  
With \_\_\_\_\_  
Open Flow \_\_\_\_\_ /10ths Water in \_\_\_\_\_ Inch  
\_\_\_\_\_ /10ths Merc. in \_\_\_\_\_ Inch  
Volume \_\_\_\_\_ Cu. Ft.  
Rock Pressure \_\_\_\_\_ lbs. \_\_\_\_\_ hrs.  
Oil \_\_\_\_\_ bbls., 1st 24 hrs.  
Fresh water \_\_\_\_\_ feet \_\_\_\_\_ feet  
Salt water \_\_\_\_\_ feet \_\_\_\_\_ feet

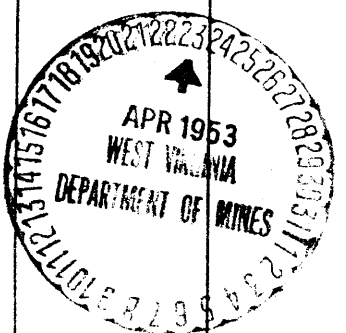
Casing and Tubing	Used in Drilling	Left in Well	Packers
Size			
16			Kind of Packer
13			
10			Size of
8 1/4			
6 3/4			Depth set
5 3/16			
4 1/2	2098'11"	2098'11"	Perf. top
2			Perf. bottom
Liners Used			Perf. top
			Perf. bottom

CASING CEMENTED \_\_\_\_\_ SIZE \_\_\_\_\_ No. Ft. \_\_\_\_\_ Date \_\_\_\_\_

COAL WAS ENCOUNTERED AT \_\_\_\_\_ FEET \_\_\_\_\_ INCHES  
\_\_\_\_\_ FEET \_\_\_\_\_ INCHES \_\_\_\_\_ FEET \_\_\_\_\_ INCHES  
\_\_\_\_\_ FEET \_\_\_\_\_ INCHES \_\_\_\_\_ FEET \_\_\_\_\_ INCHES

Formation	Color	Hard or Soft	Top	Bottom	Oil, Gas or Water	Depth Found	Remarks
Maxon Sand Gas			2074 2077	2097 2083	Schlumberger Measurement		
Dlg. to Filled back (Cement Plug)				2099 2097 2097	6 5/8" casing P. G. Perforation 1/2" shots at the following depth:		
Total Depth					5 shots	2026 - 2028	
					7 shots	2026 - 2030	
					3 shots	2029 - 2030	
					5 shots	2032 - 2033	
					Tubing Centralizers set at the following depth beginning at the top of well.		
					1 -	56'8"	
					2 -	532'4"	
					3 -	925'11"	
					4 -	1215'3"	
					5 -	1500'4"	
					6 -	1750'10"	
					7 -	1992'2"	
					8 -	2089'8"	

The Manufacturers Light and Heat Company Active Well - - Reconditioned



WEST VIRGINIA DEPARTMENT OF MINES

OIL AND GAS DIVISION

WELL RECORD

Permit No. Wet. 168

Gas Well

Littleton Quad.

CASING & TUBING

Company	The Manufacturers Light & Heat	13	Cond.	16	16
Address	800 Union Trust Bldg., Pittsburgh, Pa.	10		553'6"	553'6"
Farm	Charles McCardle Acres 82	8 1/2		1575'11"	1575'11"
Location	Not given	6 5/8		2064'10"	2064'10"
Well No.	3556				
District	Proctor				
Surface	Charles McCardle, Bebee, W.Va.				
Mineral	The Mrs. Light & Heat Co., Pittsburgh, Pa.				
Drilling	Commenced 10/12/37				
	Completed 11/11/37				
Date Shot	Not shot				
Volume	10,170,420 Cu.Ft.				
Rock Press .	410# 24 hrs.				

Formation Color					Hor	Top	Base	Result	Formation Color					Hor	Top	Base	Result
Clay			S		0	20		Slate					1308	1324			
Lime			H		20	35		Lime					1324	1337			
Slate					35	46		Slate					1337	1360			
Red Rock	Red		S		46	52		Red Rock	Red	S			1360	1365			
Slate					52	222		Lime					1365	1415			
Red Rock	Red		S		222	364		Shale	Dark				1415	1441			
Slate					364	455		Lime					1441	1461			
Lime					455	475		Slate	Dark				1461	1470			
Slate			S		475	516		Lime					1470	1480			
Red Rock	Red		S		516	537		Slate	White				1480	1508			
Lime			H		537	542		Lime					1508	1514			
Slate					542	587		Shale	Dark				1514	1536			
Lime					587	592		Slate	Light				1536	1548			
Slate					592	635		Red Rock	Red	S			1548	1556			
Lime					635	640		B. Dunkard					1556	1576			
Slate	Dark		S		640	650		Slate					1576	1615			
Lime					650	658		Lime					1615	1630			
Slate					658	665		Slate					1630	1640			
Lime					665	675		Gas Sand		H			1640	1677			
Shale					675	690		Slate					1677	1685			
Lime					690	735		Lime					1685	1700			
Slate	Dark		S		735	780		Sand Lower bed sand					1700	1724			
Slate	Light		H		780	830		Shale					1724	1734			
Lime					830	882		Sand					1734	1760			
Slate	Dark				882	915		Shale					1760	1780			
Lime					915	978		Sand Salt Sand					1780	1850		Water	
Mapletown Coal B.			S		978	980		Slate					1850	1870		1825-	
Slate			S		980	997		Lime			H		1870	1873		1845	
Lime					997	1030		Slate	Light	S			1873	1995		1200'	
Slate					1030	1040		Shale	Dark				1995	2030		in 48	
Lime					1040	1058		Salt or Maxon		H			2030	2092		hrs.	
Slate			S		1058	1076		TOTAL DEPTH				2092	2092				
Pitts. Coal	Black		S		1076	1078										Gas	
Slate					1078	1089										2082-	
Lime					1089	1100										2091	
Slate					1100	1110											
Lime					1110	1125											
Red Rock	Red		S		1125	1130											
Slate					1130	1150											
Lime & Sand					1150	1190											
Slate	Dark				1190	1216											
Red Rock	Red		S		1216	1250											
Slate					1250	1260											
Red Rock	Red		S		1260	1275											
Lime					1275	1283											
Slate					1283	1290											
Red Rock	Red		S		1290	1308											

1240  
778  
202

1240  
1076  
164