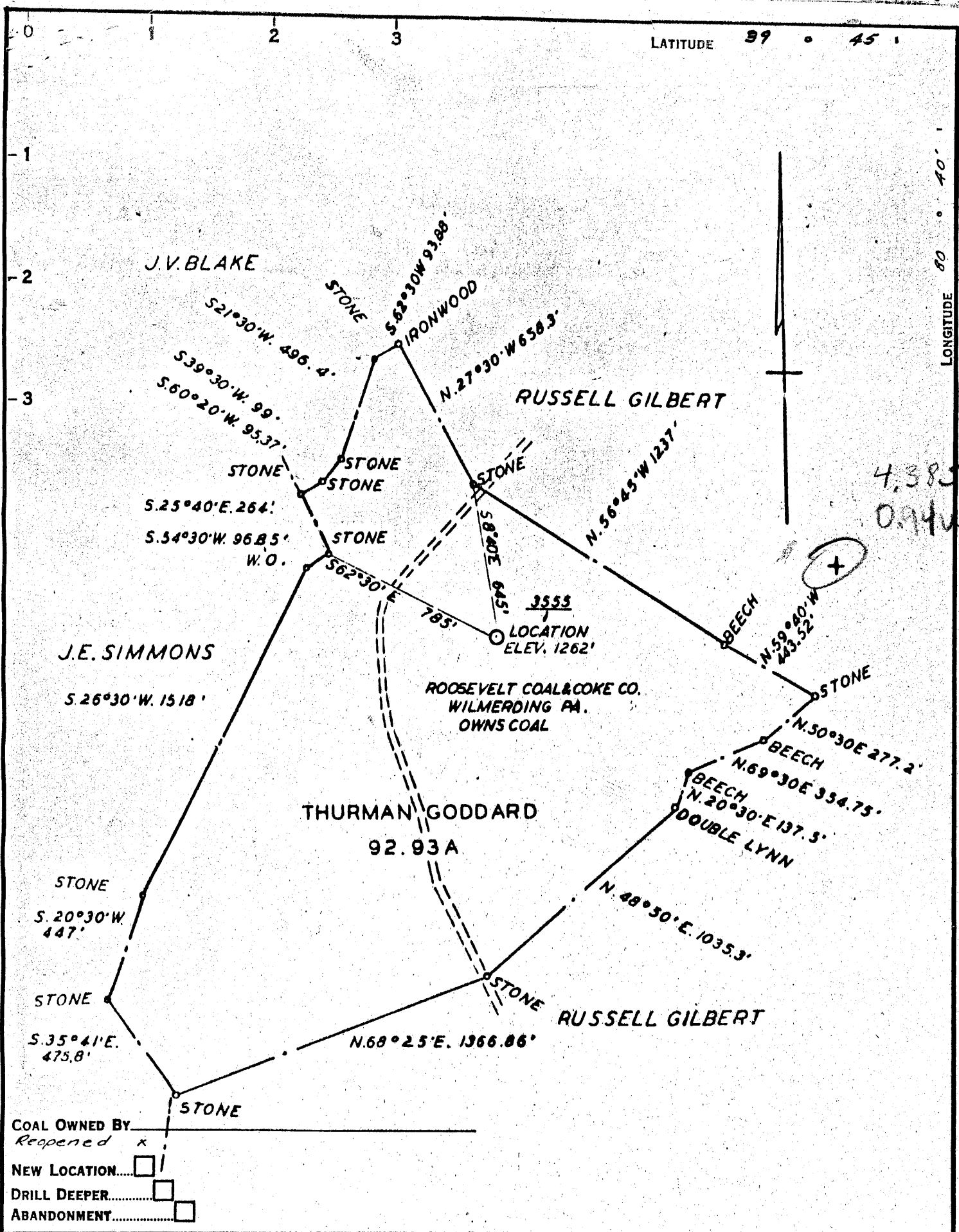


LATITUDE 39 ° 45 '

LONGITUDE 80 ° 40 '



4,385  
0.94W

COMPANY The Manufacturers Light & Heat Co  
 ADDRESS 800 Union Trust Bldg, Fgh. Pa.  
 FARM Thurman Goddard  
 TRACT 1 ACRES 92.93 LEASE No. 26909  
 WELL (FARM) No. 1 SERIAL No. 3555  
 ELEVATION (SPIRIT LEVEL) 1262'  
 QUADRANGLE Littleton  
 COUNTY Wetzel DISTRICT Prater  
 ENGINEER John A. London  
 ENGINEER'S REGISTRATION No. 12710  
 FILE No. \_\_\_\_\_ DRAWING No. V-13-880  
 DATE 18 Aug. 1953 SCALE 1" = 800'

STATE OF WEST VIRGINIA  
 DEPARTMENT OF MINES  
 OIL AND GAS DIVISION  
 CHARLESTON

**WELL LOCATION MAP**

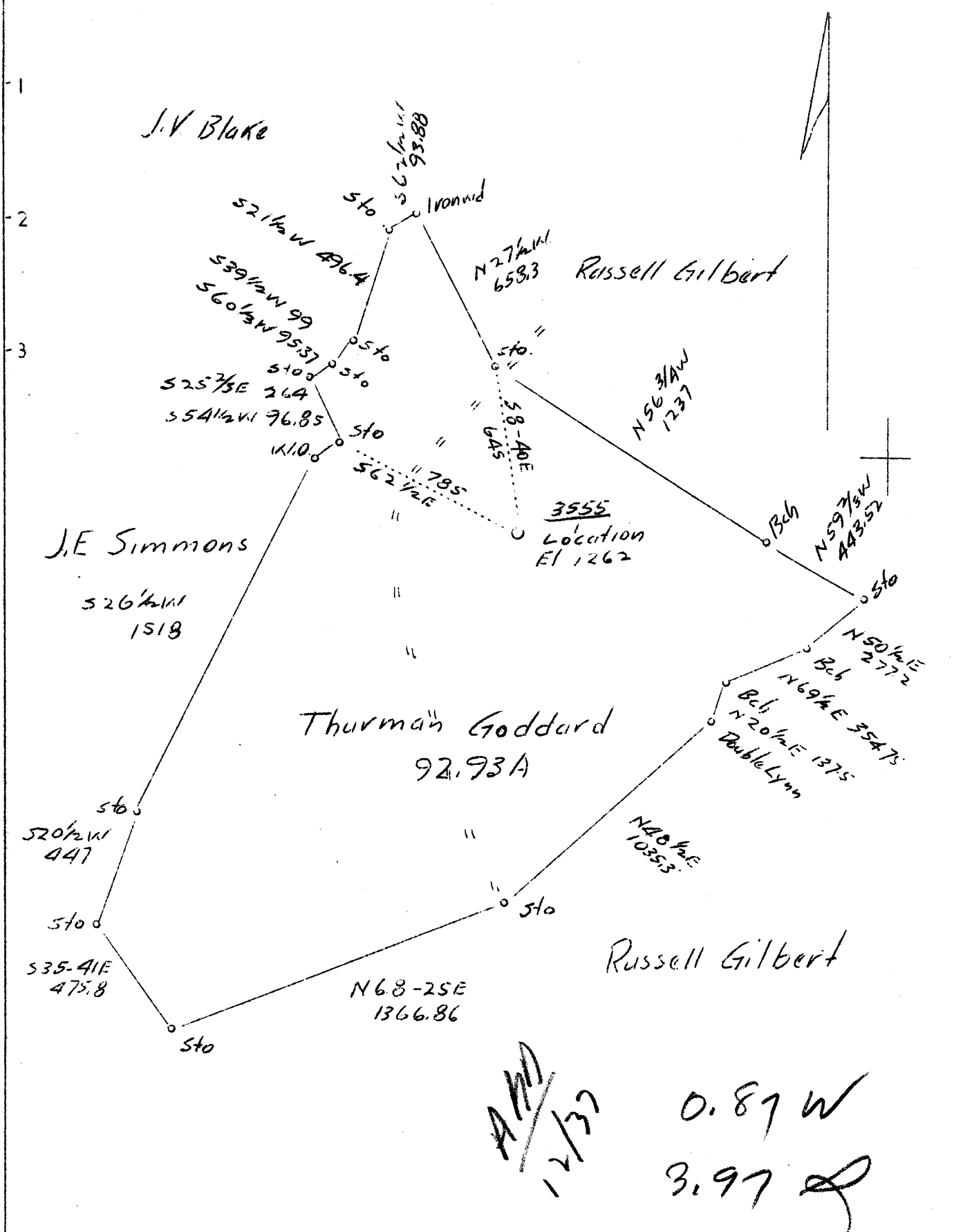
FILE No. Wet-167-REDRILL

+ DENOTES LOCATION OF WELL ON UNITED STATES TOPOGRAPHIC MAPS, SCALE 1 TO 62,500. LATITUDE AND LONGITUDE LINES BEING REPRESENTED BY BORDER LINES AS SHOWN.

- DENOTES ONE INCH SPACES ON BORDER LINE OF ORIGINAL TRACING.

LATITUDE 39° 45'

LONGITUDE 80° 40'



AMA  
12/37  
0.87 W  
3.97

Company The Manufacturers Light & Heat Co.  
 Address Pittsburgh, Pa.  
 Farm Thurman Goddard  
 Tract 1 Acres 92.93 Lease No. 17172  
 Well (Farm) No. 1 Serial No. 3555  
 Elevation (Spirit Level) 1262'  
 Quadrangle Littleton  
 County Wetzcl District Proctor  
 Engineer A.J. Russell  
 Engineer's Registration No.  
 File No. Drawing No. Y-7 796  
 Date Aug. 27, 1937 Scale 1" = 500'

STATE OF WEST VIRGINIA  
 Department of Mines  
 OIL AND GAS DIVISION  
 CHARLESTON

WELL LOCATION MAP

File No. WET-167

+ Denotes location of well on United States Topographic Maps, scale 1 to 62,500, latitude and longitude lines being represented by border lines as shown.

— Denotes one inch spaces on border line of original tracing.



STATE OF WEST VIRGINIA  
DEPARTMENT OF MINES  
OIL AND GAS DIVISION

9

*Littleton*

WELL RECORD

Permit No. WET-167-Redrill

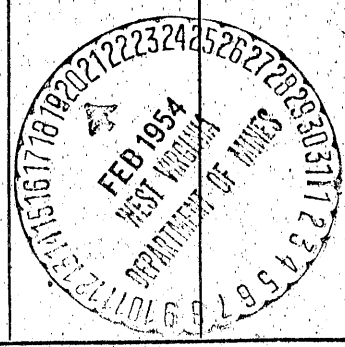
Oil or Gas Well Storage  
(KIND)

Company THE MANUFACTURERS LIGHT AND HEAT COMPANY  
Address 800 Union Trust Bldg., Pgh., Penna.  
Farm Thurman Goddard Acres 92.93  
Location (waters) \_\_\_\_\_  
Well No. 1-3555 Elev. 1262'  
District Proctor County Wetzel  
The surface of tract is owned in fee by \_\_\_\_\_  
Address \_\_\_\_\_  
Mineral rights are owned by \_\_\_\_\_  
Address \_\_\_\_\_  
Drilling commenced September 12, 1953  
Drilling completed November 11, 1953  
Date Shot From \_\_\_\_\_ To \_\_\_\_\_  
With \_\_\_\_\_  
Open Flow /10ths Water in \_\_\_\_\_ Inch  
/10ths Merc. in \_\_\_\_\_ Inch  
Volume None Cu. Ft.  
Rock Pressure \_\_\_\_\_ lbs. \_\_\_\_\_ hrs.  
Oil \_\_\_\_\_ bbls., 1st 24 hrs.  
Fresh water \_\_\_\_\_ feet \_\_\_\_\_ feet  
Salt water \_\_\_\_\_ feet \_\_\_\_\_ feet

Casing and Tubing	Used in Drilling	Left in Well	Packers
Size			Kind of Packer
16			
13			
10		503'11"	Size of
8 1/4		1582'9"	
6 5/8			Depth set
5 3/16		2077'6"	
3			Perf. top
2			Perf. bottom
Liners Used			Perf. top
			Perf. bottom

CASING CEMENTED \_\_\_\_\_ SIZE \_\_\_\_\_ No. Ft. \_\_\_\_\_ Date \_\_\_\_\_  
COAL WAS ENCOUNTERED AT \_\_\_\_\_ FEET \_\_\_\_\_ INCHES  
\_\_\_\_\_ FEET \_\_\_\_\_ INCHES FEET \_\_\_\_\_ INCHES  
\_\_\_\_\_ FEET \_\_\_\_\_ INCHES FEET \_\_\_\_\_ INCHES

Formation	Color	Hard or Soft	Top	Bottom	Oil, Gas or Water	Depth Found	Remarks
Top of Maxon Sand			2060		Schlumberger Measurement		
Bottom of Maxon Sand			2073		Casing Centralizers set at the following depths from bottom of casing:		
Set Lead Plug			2114		1	33'4"	
Cement			2073	2114	2	131'7"	
Total Depth				2073	3	164'7"	
					4	400'5"	
					5	596'3"	
					6	761'6"	
					7	1176'0"	



WEST VIRGINIA DEPARTMENT OF MINES  
OIL AND GAS DIVISION

549

WELL RECORD

Permit No. Wet-167

Oil or Gas Well Dry Hole  
(Kind)

Company The Manufacturers Light & Heat  
Address 800 Union Trust Building, Pittsburgh Pa.  
Farm Thurman Goddard Acres 101  
Location (waters) \_\_\_\_\_  
Well No. 3555 Elev. 262  
District Proctor County Wetzel  
The surface of tract is owned in fee by Thurman Goddard  
Address Beebe, W. Va.  
Mineral rights are owned by The Manufacturers Light & Heat Company  
Address Pittsburgh, Pa.  
Drilling commenced 10/6/37  
Drilling completed 11/13/37  
Date shot Not shot Depth of shot \_\_\_\_\_  
Open Flow 0 /10ths Water in \_\_\_\_\_ Inch  
\_\_\_\_\_ /10ths Merc. in \_\_\_\_\_ Inch  
Volume None Cu. Ft.  
Rock Pressure None lbs. \_\_\_\_\_ hrs.  
Oil None bbls., 1st 24 hrs.  
Fresh water None 1084 feet 1886 feet  
Salt water 1880 feet \_\_\_\_\_ feet

Casing and Tubing	Used in Drilling	Left in Well	Packers
Size			
16. Conductor		Yes	Kind of Packer _____
13.			<del>None</del>
10.	509-9	None	Size of _____
8 1/4	1585'-7"	None	
6 5/8	2222' 7"	None.	Depth set _____
5 3/16			
3.			Perf. top _____
2.			Perf. bottom _____
Liners Used			Perf. top _____
			Perf. bottom _____

CASING CEMENTED \_\_\_\_\_ SIZE \_\_\_\_\_ No. FT. \_\_\_\_\_ Date \_\_\_\_\_

COAL WAS ENCOUNTERED AT 646 FEET 12 INCHES  
705 FEET 12 INCHES 1001 FEET 24 INCHES  
1084 FEET 24 INCHES FEET INCHES

Formation	Color	Hard or Soft	Top	Bottom	Oil Gas or Water	Depth Found	Remarks
Clay shale	Brown	Soft	10	15			
Red rock	Red	Soft	15	20			
Shale	Black		20	25			
Shale	White		25	30			
Shale	Dark		30	35			
Sand	White		35	40			
Shale	Dark		40	45			
Red rock	Red	Soft	45	50			
Slate			50	55			
Lime	White		55	60			
Slate	Red	Soft	60	65			
Red rock	Red	Soft	65	70			
Lime			70	75			
Red rock	Red	Soft	75	80			
Slate			80	85			
Red rock	Red	Soft	85	90			
Sand			90	95			
Slate			95	100			
Red rock	Red	Soft	100	105			
Slate			105	110			
Lime	White		110	115			
Slate			115	120			
Coal	Black	Soft	120	125			
Slate	Dark		125	130			
Lime	White		130	135			
Slate	Black	Soft	135	140			
Sand			140	145			
Slate			145	150			
Lime			150	155			
Slate			155	160			
Sand			160	165			
Lime shells			165	170			
Coal Mapletown	Black	Soft	170	175			
Slate			175	180			
Slate			180	185			
Slate	Black	Soft	185	190			
Slate	White		190	195			
Lime			195	200			
Slate			200	205			
Murphy sand	Red	Soft	205	210			
Red rock	Red	Soft	210	215			
Slate			215	220			
Red rock	Red	Soft	220	225			
Lime			225	230			
Slate	Red	Soft	230	235			
Red rock	Red	Soft	235	240			
Lime			240	245			
Red rock	Red	Soft	245	250			
Slate	Red	Soft	250	255			
Red rock	Red	Soft	255	260			
Lime			260	265			
Slate	Red	Soft	265	270			
Red rock	Red	Soft	270	275			
Lime			275	280			
Slate			280	285			
Little Dunk.	Dark	Soft	285	290			
Slate	Red		290	295			
Gritty shell	Pink		295	300			
Pink rock	Pink		300	305			
Big Dunkard			305	310			
Slate			310	315			
Slate	Black		315	320			
Sand			320	325			
Slate			325	330	Water	1798-1800	
Salt sand	Black	Soft	330	335			
Slate	Black		335	340			
Salt sand	Black		340	345	Water	1880	
Slate	Black		345	350			
Gritty Lime			350	355			
Slate			355	360			

Formation	Color	Hard or Soft	Top	Bottom	Oil, Gas or Water	Depth Found	Remarks
<del>5rd salt</del>			1962	2010			
Shale	Black		2010	2025			
Line Gritty			2025	2050			
Maxon sand			2050	2095			
Slate & Shells			2095	2132			
Line shells			2132	2137			
Pencil Cave			2137	2157			
Blu Monday			2157	2185			
Big Line			2185	2227			
Big Injun sand			2227	2503	Water	2295	Show of gas 2295.
Total depth			2508				

2157  
 1262  
 -----  
 895

Date January 26th, 1938  
 THE MANUFACTURERS LIGHT & HEAT CO.,  
 APPROVED \_\_\_\_\_, Owner  
 By Harry H. Fowler  
 Land Dept. (Title) Office Manager.