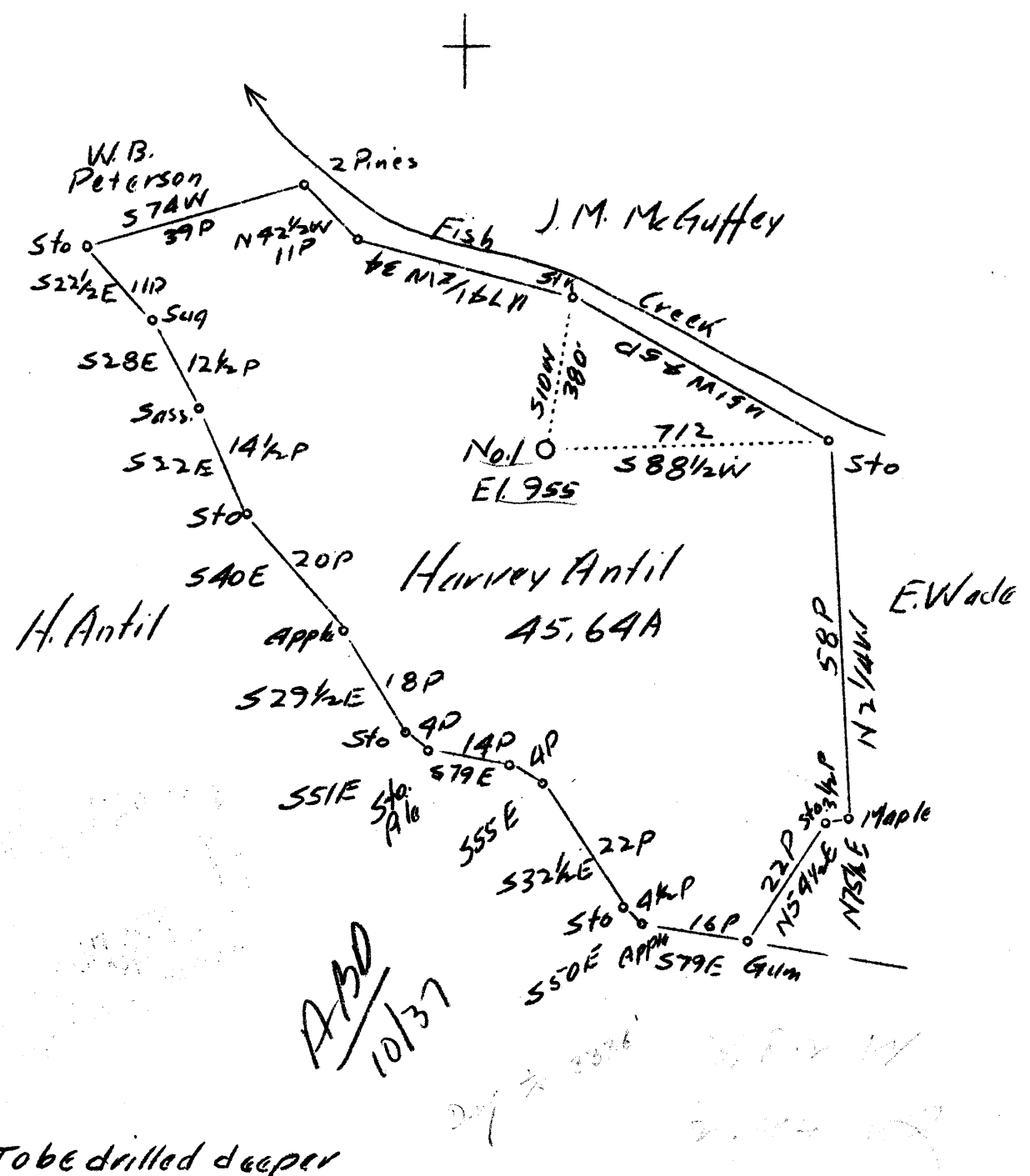


1 2 3 LATITUDE 45' 30'

1 2 3 LONGITUDE 80° 30'



Company	Carnegie Natural Gas Co.
Address	1014 Frick Bldg. Pittsburgh, Pa.
Farm	Harvey Antil
Tract	One Acres 45
Lease No.	E-9383-71
Well (Farm) No.	1
Serial No.	1093
Elevation (Spirit Level)	955'
Quadrangle	Littleton, N.E.
County	Wetzel
District	Center
Engineer	D.T. Britton
Engineer's Registration No.	
File No.	Drawing No.
Date	6-8-1937
Scale	1"-400'

STATE OF WEST VIRGINIA
Department of Mines
OIL AND GAS DIVISION
CHARLESTON

WELL LOCATION MAP
File No. INET-1600

+ Denotes location of well on United States Topographic Maps, Scale 1 to 62,500, latitude and long. lines being represented by border lines as shown.

— Denotes one inch spaces on border line of original tracing.

3-0 42

WEST VIRGINIA DEPARTMENT OF MINES
OIL AND GAS DIVISION

527

WELL RECORD

Oil
Oil

Permit No. 1-1093

Oil or Gas Well (Kind)

Company..... Carnegie Natural Gas Company	Casing and Tubing	Used in Drilling	Left in Well	Packers
Address..... Hundred, West Virginia.	Size			
Farm..... Harvey Antil Acres..... 45	16.....			Kind of Packer.....
Location (waters)..... Fish Creek	13.....			Size of.....
Well No..... 1-1093 Elev..... 985'	10.....			Depth set.....
District..... Center County..... Netzel	8 1/4.....			Perf. top.....
The surface of tract is owned in fee by.....	6 5/8.....			Perf. bottom.....
Address.....	5 3/16.....			Perf. top.....
Mineral rights are owned by.....	3.....			Perf. bottom.....
Address.....	2.....			
Drilling commenced..... June 27, 1937	Liners Used.....			
Drilling completed..... July 10, 1937				
Date shot..... Depth of shot.....				
Open Flow /10ths Water in..... Inch				
/10ths Merc. in..... Inch				
Volume..... Cu. Ft.	CASING CEMENTED..... SIZE..... No. FT..... Date			
Rock Pressure..... lbs..... hrs.				
Oil..... No Oil found in drilling deeper bbls., 1st 24 hrs.	COAL WAS ENCOUNTERED AT..... FEET..... INCHES			
Fresh water..... feet..... feet FEET..... INCHES..... FEET..... INCHES			
Salt water..... feet..... feet FEET..... INCHES..... FEET..... INCHES			

Formation	Color	Hard or Soft	Top	Bottom	Oil Gas or Water	Depth Found	Remarks
TOTAL DEPTH BEFORE DRIVING DOWN			2846'				
Line	White	Hard	2846'	2860'			
Slate	Black	Soft	2860'	2863'			
Line	White	Hard	2863'	2870'			
Slate	Gray	Soft	2870'	2886'			
Lime Shells	Grey	Hard	2886'	2890'			
Slate	Black	Soft	2890'	2900'			
Line	White	Hard	2900'	2902'			
Slate	Black	Soft	2902'	2909'			
Line Shells	Grey	Soft	2909'	2920'			
Slate	Grey	Soft	2920'	2931'			
Line Shells		Hard	2931'	2940'			
Slate	Black	Soft	2940'	2948'			
Line	White	Hard	2948'	2953'			
Slate	Black	Soft	2953'	2960'			
Line	White	Hard	2960'	2975'			
Slate	Black	Soft	2975'	2981'			
Line	White	Hard	2981'	3004'			
Slate	Black	Soft	3004'	3016'			
Line	White	Hard	3016'	3021'			
Slate	Black	Soft	3021'	3044'			
Line	White	Hard	3044'	3050'			
Slate	Gray	Soft	3050'	3054'			
Line	White	Hard	3054'	3064'			
Slate	Grey	Soft	3064'	3085'			
Line	White	Hard	3085'	3105'			
Slate	Grey	Soft	3105'	3125'			
Line Gritty	Dark	Hard	3125'	3134'			
Slate	Black	Soft	3134'	3140'			
Line Gritty	Dark	Hard	3140'	3150'			
Slate	Black	Soft	3150'	3158'			
Line Shells	White	Hard	3158'	3160'			
Slate	Black	Soft	3160'	3165'			
Line Shells	Grey	Hard	3165'	3175'			
Slate	Black	Soft	3175'	3180'			
Line Shells	Grey	Hard	3180'	3191'			
Slate	Black	Soft	3191'	3210'			
TOTAL DEPTH				3210'			



Formation	Color	Hard or Soft	Top	Bottom	Oil, Gas or Water	Depth Found	Remarks

Date..... July 31....., 19 37..

APPROVED..... CARNEGIE NATURAL GAS COMPANY....., Owner

By..... T. H. Archer.....
(Title) Land Agent..