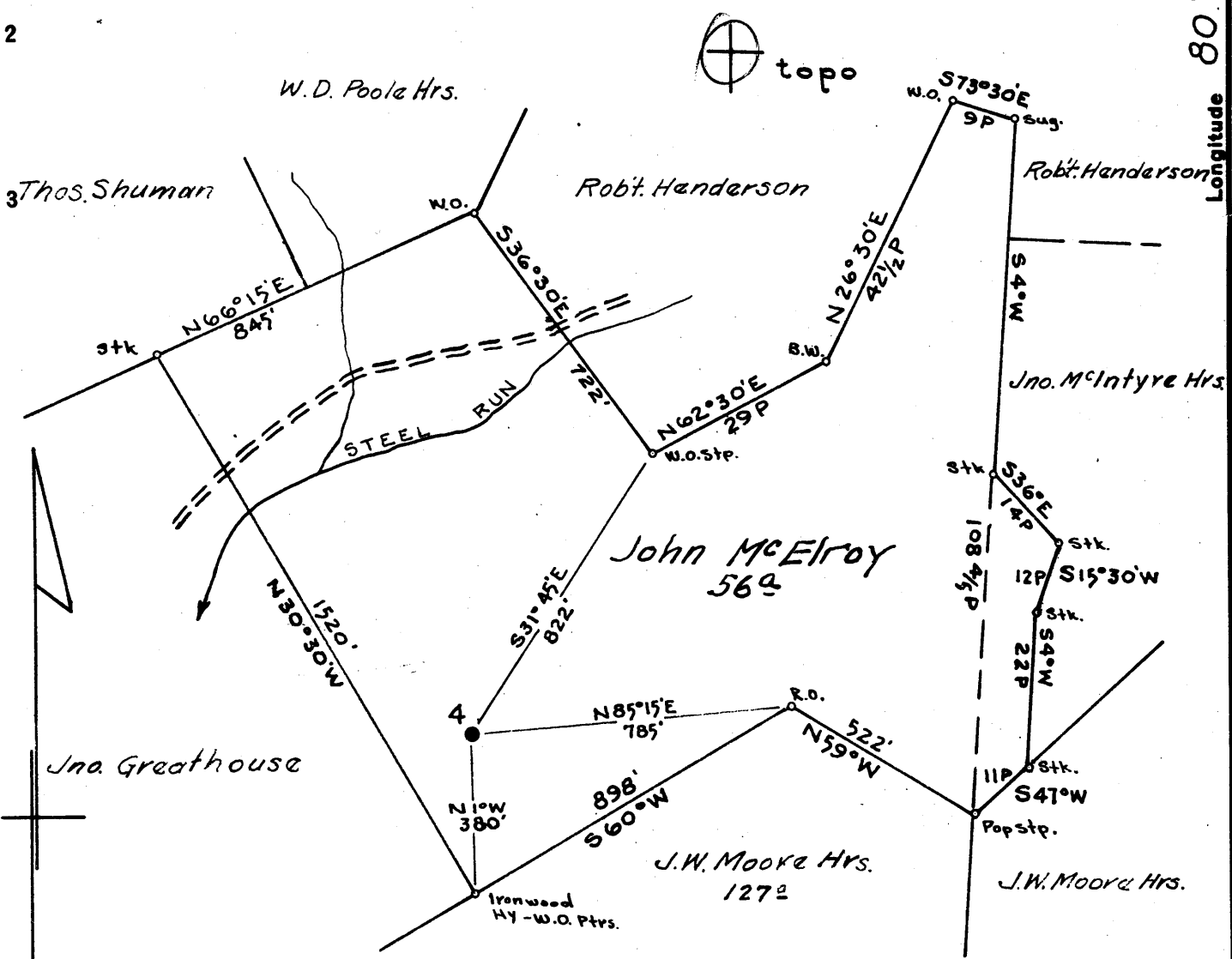


Latitude 39° 40'

Longitude 80° 35'



Coal & Surface: J.W. McElroy Est. and Goldie Barth
 % Eleanor D. McElroy
 336 Locust Ave.
 Fairmont, West Virginia

JUN 14 1959

3.0 W
 2.3 2-8

New Location...
 Drill Deeper...
 Abandonment...

Map N78 N13W1

Company South Penn Natural Gas Co.
 Address Parkersburg, W.Va.
 Farm John McElroy
 Tract _____ Acres 56 Lease No. 79737
 Well (Farm) No. 4 Serial No. _____
 Elevation (Spirit Level) 1255.46 ground
 Quadrangle Littleton
 County Wetzel District Center
 Engineer A.C. Hillert
 Engineer's Registration No. 2534
 File No. 441 Drawing No. _____
 Date May 21, 1959 Scale 1" = 400'

STATE OF WEST VIRGINIA
 DEPARTMENT OF MINES
 OIL AND GAS DIVISION
 CHARLESTON

WELL LOCATION MAP

FILE NO. WET-155-A P

+ Denotes location of well on United States Topographic Maps, scale 1 to 62,500, latitude and longitude lines being represented by border lines as shown.

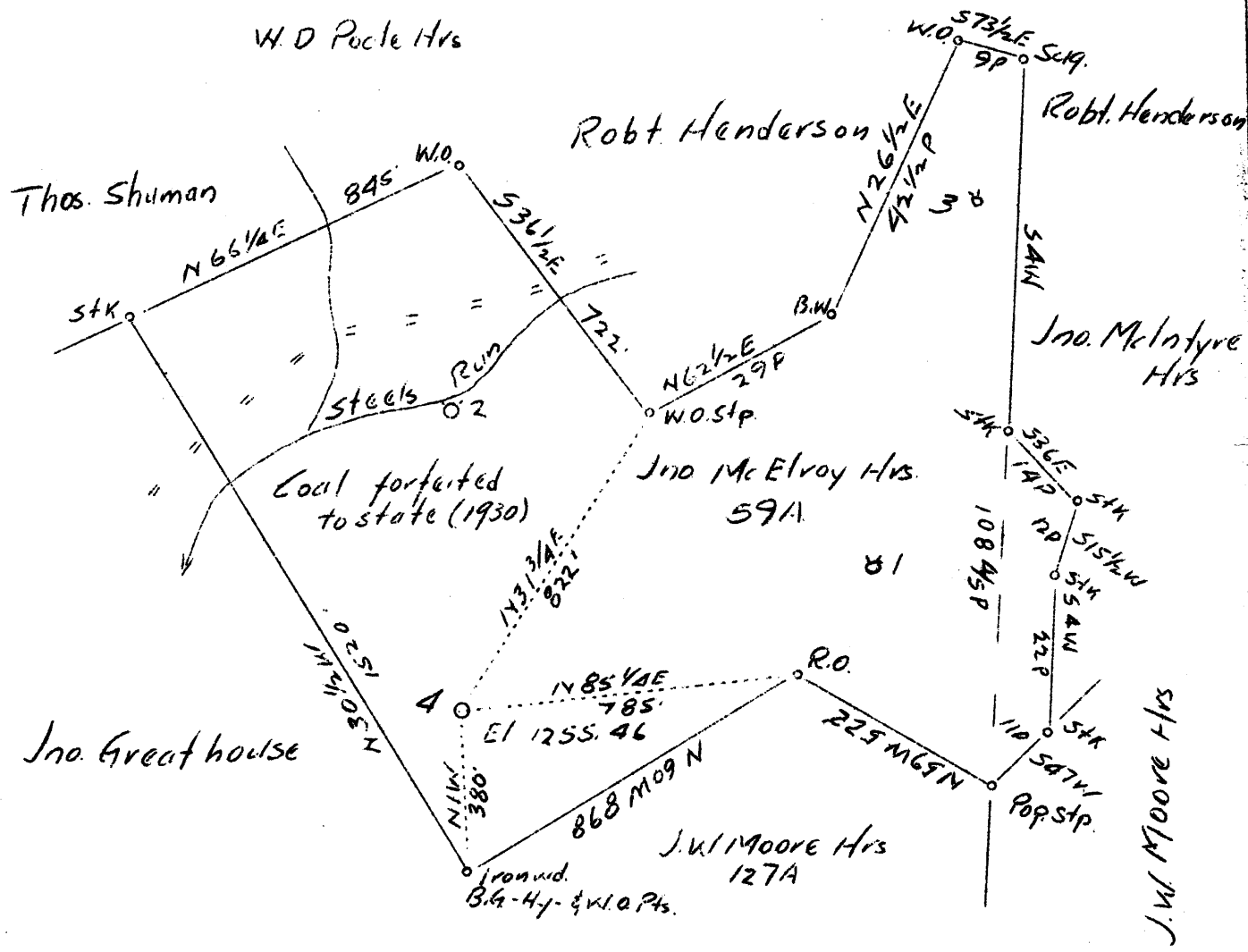
- Denotes one inch spaces on border line of original tracing.



JOHN McELROY No. 4 - SOUTH PENN NAT. GAS CO. - 66-38 D.P. No. - WET-155-

Eqvt

3.02W
2,132N



Company South Penn Oil Co
 Address 411 7th Ave., Pittsburgh, Pa
 Farm John McElroy
 Tract Acres 56 Lease No. 79737
 Well (farm) No. 4 Serial No. _____
 Quadrangle Littleton C
 County Wetzel
 District Center
 Engineer E. C. Tabler
 Engineer's Registration No. _____
 File No. _____ Drawing No. _____
 Date 4-14-37 Scale 1" = 400'

STATE OF WEST VIRGINIA
 Department of Mines
 OIL AND GAS DIVISION
 Charleston

WELL LOCATION MAP

File No. ~~153~~
WET 153

+ Denotes location of well on U. S. Topographic Maps, scale 1 to 62,500 latitude and longitude lines being represented by border lines as shown

— Denotes one inch spaces on border line of original tracing.

WEST VIRGINIA DEPARTMENT OF MINES

OIL AND GAS DIVISION

WELL RECORD

Permit No. Wet-155

Oil Well

Littleton Quad

CASING & TUBING

Company South Penn Oil Co.
 Address 411 Seventh Ave., Pittsburgh, Pa.
 Farm John McElroy Acres 56
 Location Steele's Run of Little Fishing Creek
 Well No. 4 Elev. 1255.46
 District Center County Wetzel
 Surface Jno. McElroy Hrs., c/o Maria Barth
 Address Locust Ave., Ext., Fairmont, W.Va.
 Mineral Same
 Drilling Commenced June 4, 1937
 Completed Aug. 6, 1937
 Date Shot Aug. 12, 1937 Depth 3219-24
 Volume 7,088 Cu.Ft.
 Rock Press. Not given
 Oil 10 bbls., 1st 24 hrs.

Cond.	16	
10	1324	Pulled
8 $\frac{1}{2}$	1694	Pulled
6 $\frac{5}{8}$	2383	
5 $\frac{3}{16}$	3088	
2	3214	

Formation Color ^{H₂O} TOP Base Result Formation Color ^{H₂O} TOP Base Result

Mapletown Coal		1088	1092						
Pitts. Coal		1190	1195						
Murphy Sand		1314	1330						
J. Dunkard		1555	1575						
B. Dunkard		1675	1706						
1st Gas Sand		1716	1735						
1st Salt Sand	2407	1875	1900						
2nd Salt Sand		1935	2227	Water					
Maxon Sand		2298	2315	1945					
L. Lime		2346	2354	4 Blr.					
Pencil Cave		2354	2358	pr. hr.					
Big Lime		2358	2407						
Big Injun Sand		2407	2643	Gas					
Squaw Sand		2650	2665	2486-89					
Berea Grit		2785	2812	1.8"W.					
50 ft. Sand		3069	3084	1"					
Stray Sand		3218	3230						
Gordon Sand		3230	3242	Gas					
TOTAL DEPTH			3242	2509-					
				2512-					
				3.2W.					
				1"					
				Oil & Gas					
				3219-	Oil-10 Bbl.				
				3224	Gas 1.5"W. $\frac{1}{2}$ "				