

Company <u>HOPE NATURAL GAS CO.</u>	
Address <u>CLARKSBURG, W.VA.</u>	
Farm <u>WM. SCHAFFER</u>	
Tract <u>1</u>	Acres <u>75</u> Lease No. <u>47187</u>
Well (Farm) No. <u>1</u>	Serial No. <u>7774</u>
Elevation (Spirit Level) <u>1015</u>	
Quadrangle <u>LITTLETON</u>	
County <u>WETZEL</u>	District <u>PROCTOR</u>
Engineer <u>C. W. Bradley</u>	
Engineer's Registration No. <u>135</u>	
File No. _____	Drawing No. _____
Date <u>FEB 1937</u> Scale <u>1"=400'</u>	

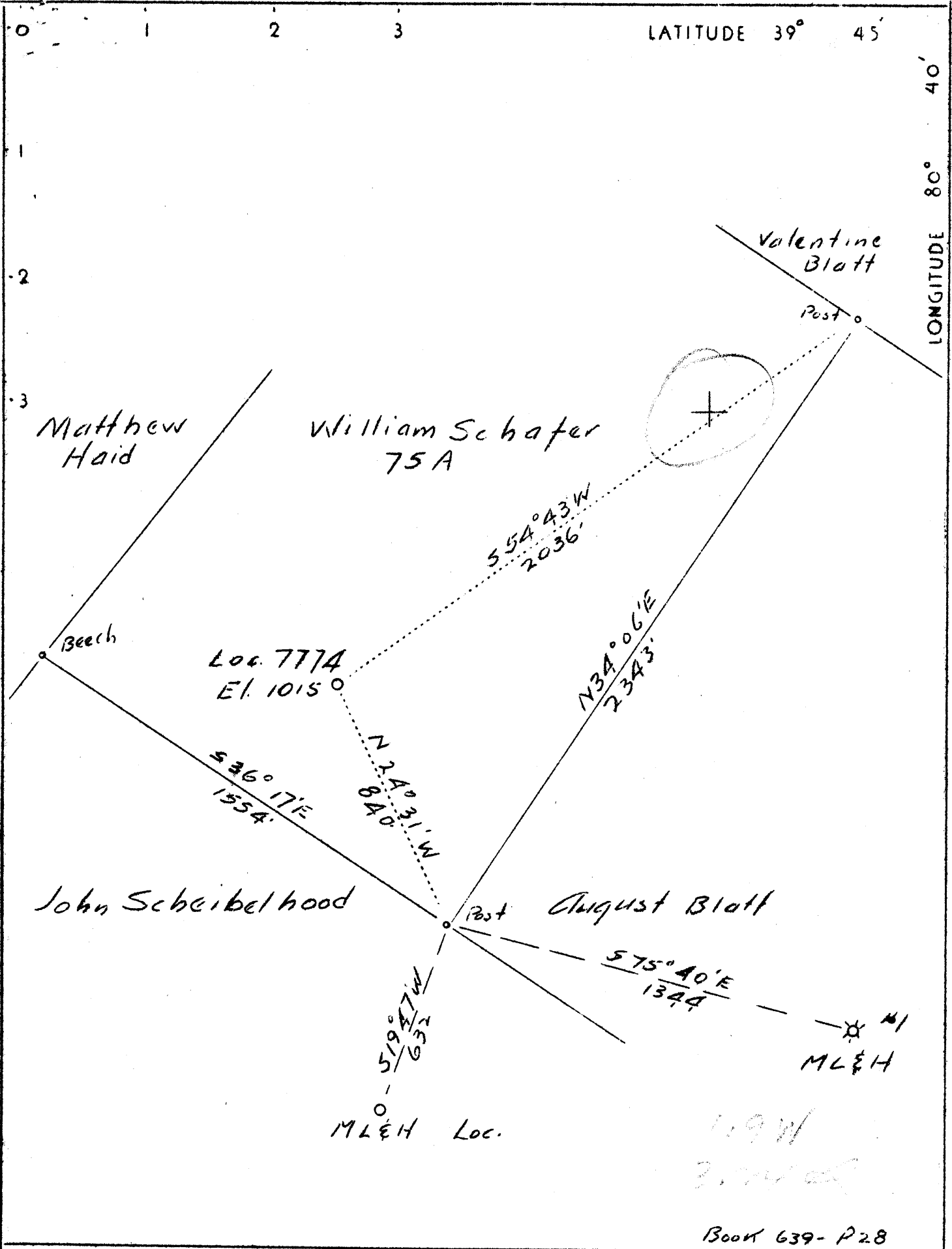
STATE OF WEST VIRGINIA
DEPARTMENT OF MINES
OIL AND GAS DIVISION
CHARLESTON

WELL LOCATION MAP

FILE NO. WET-153-REDRILL
NOW WELL # 1-4236
MANUFACTURERS LG. HEAT CO

† Denotes location of well on United States Topographic Maps, scale 1 to 62,500, latitude and longitude lines being represented by border lines as shown.

— Denotes one inch spaces on border line of original tracing.



Book 639-P28

Company	Hope Natural Gas Company
Address	Clarksburg, W. Va.
Farm	Wm. Schafer
Tract	1 Acres 75 Lease# 47187
Well(Farm) No. 1	Serial No. 7774
Elevation(Spirit Level)	1015
Quadrangle	Littleton <i>(720)</i>
County	Wetzel District Proctor
Engineer	S. H. Bradley
Engineer's Registration No.	135
File No.	Drawing No.
Date	2-1937 Scale 1" - 400'

STATE OF WEST VIRGINIA
 Department of Mines
 OIL AND GAS DIVISION
 Charleston

WELL LOCATION MAP
 File No. WVET-153

+ Denotes location of well on U. S. Topographic Maps, scale 1 to 62,500 latitude and longitude lines being represented by border lines as shown.

— Denotes one inch spaces on border line of original tracing.

LATITUDE

39 42 30

OGIS
7.5' loc

07 08

LONGITUDE

7.5 OGIS topo location

7.5' loc 0.40S
1.91W

15' loc 3.28S
(calc.) 1.91W

Company _____

Farm _____

Quad Wileyville Littleton NW

County _____

District Proctor

WELL LOCATION MAP

File No. Wet 153

WEST VIRGINIA DEPARTMENT OF MINES
OIL & GAS DIVISION
W E L L R E C O R D

Permit No. Wet-153-D
- Quad.

Gas Well

Company Hope Natural Gas Co.
Address Clarksburg, W. Va.
Farm William Schafer ACRES 75
Location Lynn Camp Run
Well No. 7774 ELEV. 1015
District Proctor - Wetzel County
Surface Wm. Schafer, Proctor, W. Va.
Deepening commenced May 6, 1940
Deepening completed May 23, 1940
Shot Not shot
Open Flow 50/10ths Merc. in 5-3/16 inch
Volume 6,581,000 c.f.
Rock Pressure 1055 lbs. 24 hrs.
Water None recorded

CASING & TUBING		
10	1000	1000
8-1/4	1748	1748
6-5/8	2053	2053
5-3/16	2812	2812
3	1696	ulled
Not cemented		
Coal at 915'	48"	

DRILLING DEEPER RECORD

	1950	1952-1954	
Started Drilling Deeper	1950	Gas 1952-1954	
Shells dark	1980	1985	
Shells hard	1985	1992	
Pencil Cave	1992	1997	
Lime hard	1997	2012	
Big Lime hard	2012	2071	
Big Injun Sand hard	2071	2315	
Slate	2315	2350	
Lime	2350	2365	
Slate	2365	2390	
Lime	2390	2410	
Slate	2410	2440	
Lime	2440	2490	
Slate	2490	2505	
Lime	2505	2550	
Slate	2550	2580	
Lime	2580	2600	
Slate	2600	2630	
Lime	2630	2690	
Slate	2690	2730	
Lime	2730	2776	
Pink Rock	2776	2800	
Slate	2800	2815	
Shells	2815	2860	
Lime	2860	2893	
Gordon Stray Sand	2893	2903	Gas 2893-2899
Gordon Sand	2948		Gas 2949-2954
Total Depth	2955		

2012
00

2102
1115

987

2102
1119

1183

5
2853
2853

STATE OF WEST VIRGINIA
DEPARTMENT OF MINES
OIL AND GAS DIVISION

800

WELL RECORD

Permit No. Wat-153-D

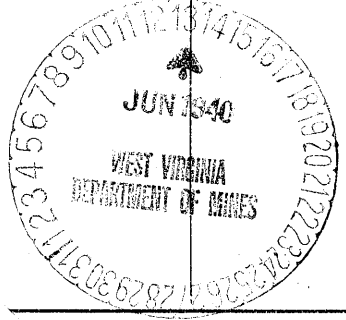
Oil or Gas Well Gas
(Kind)

Company Hope Natural Gas Company
Address Clarksburg, W. Va.
Farm William Schafer Acres 75
Location (waters) Lynn Camp Run
Well No. 7774 Elev. 1015
District Proctor County Wetzel
The surface of tract is owned in fee by Wm. Schafer
Address Proctor, W. Va.
Mineral rights are owned by _____
Address _____
Drilling commenced Deeper 5-6-1940
Drilling completed Deeper 5-23-1940
Date shot Not shot Depth of shot _____
Open Flow /10ths Water in _____ Inch
50 /10ths Merc. in 5-3/16" Inch
Volume 6,581,000 Cu. Ft.
Rock Pressure 1055 lbs. 24 hrs.
Oil _____ bbls., 1st 24 hrs.
Fresh water None recorded feet _____ feet
Salt water None recorded feet _____ feet

Casing and Tubing	Used in Drilling	Left in Well	Packers
Size			
16.			Kind of Packer
13.			
10.	1000	1000	Size of
8 1/4	1748	1748	
6 3/4	2053	2053	Depth set
5 3/16	2812	2812	
3.	1696	Pulled	Perf. top
2.			Perf. bottom
Liners Used			Perf. top
			Perf. bottom

CASING CEMENTED _____ SIZE _____ No. Ft. _____ Date _____
Not cemented
COAL WAS ENCOUNTERED AT 915 FEET 48 INCHES
FEET _____ INCHES FEET _____ INCHES
FEET _____ INCHES FEET _____ INCHES

Formation	Color	Hard or Soft	Top	Bottom	Oil, Gas or Water	Depth Found	Remarks
<u>DRILLING DEEPER RECORD</u>							
Started drilling deeper at				1950	Gas	1952-1954	
Shells	Dark		1980	1985			
Shells		Hard	1985	1992			
Pencil Cave			1992	1997			
Lime		Hard	1997	2012			
Big Lime		Hard	2012	2071			
Big Injun Sand		Hard	2071	2315			
Slate			2315	2350			
Lime			2350	2365			
Slate			2365	2390			
Lime			2390	2410			
Slate			2410	2440			
Lime			2440	2490			
Slate			2490	2505			
Lime			2505	2550			
Slate			2550	2580			
Lime			2580	2600			
Slate			2600	2630			
Lime			2630	2690			
Slate			2690	2730			
Lime			2730	2776			
Pink Rock			2776	2800			
Slate			2800	2815			
Shells			2815	2860			
Lime			2860	2893			
Gordon Stray Sand			2893	2903	Gas	2893-2899	
Gordon Sand			2948		Gas	2949-2954	
			Total Depth	2955			



WILLIAM SCHAFER NO. F-14071 WELL.

(HOPE N. G. CO. NO. 7774).

Procter District, Wetzel County, W. Va.

By The Manufacturers Light & Heat Co., 800 Union Trust Bldg., Pittsburgh, Pa.

Redrilled under permit Wet-~~53~~-R.

On 75 acres.

Elevation, 1069' L.

Drilling commenced April 22, 1937; completed May 27, 1937. Redrilled/in 1953. and deepened

10" casing, 1000'; 8" casing, 1748'; 6" casing, 2053'; 5" casing, 2812'; all left in.

Storage well. Record to Dept. of Mines dated Aug. 31, 1953.

Record to ROT from Mrs. Griffith Jan. 2, 1954. Old File No. 1419.

	Top.	Bottom.
Sandy	0	20
Slate (fresh water, 3 bbl. per hour)	20	45
Sand	45	60
Lime	60	65
Slate	65	72
Red rock	72	80
Slate	80	95
Red rock	95	245
Slate	245	290
Lime	290	300
Red rock	300	328
Slate	328	365
Red rock	365	390
Slate	390	415
Red rock	415	435
Slate	435	492
Slate	492	560
Lime	560	596
Sand	596	607
Red rock	607	614
Slate	614	620
Lime	620	640
Slate	640	650
Red rock	650	656
Sand	656	685
Slate	685	706
Lime	706	762
Slate	762	768
Lime (SLM, 825')	768	825
Maplestown (Sewickley) Coal	825	826
Lime	826	860
Slate	860	870
Lime	870	880
Slate (SLM, 915') (Sewickley) Coal	880	915
Pittsburgh Coal (show gas, 191')	915	919
Slate	919	929
Lime	929	944
Slate	944	955
Gritty lime (fresh water, 1/2 bbl. per hour)	955	974
Red rock	974	982
Slate	982	989
Lime	989	996
Murphy Sand	996	1014
		1022

Top. Bottom.
 2893 - 2903
 2949 - 2955
 Sand, Gordon Stroy (gas, 2893-2899')
 Gordon Sand (gas, 2949-2854')
 Total depth

	Top.	Bottom.
Slate	1094	1100
Red rock	1100	1144
Slate	1144	1174
Red rock	1174	1236
Little Dunkard Sand	1236	1273
Little Dunkard Sand	1273	1291
Red rock	1291	1320
Slate	1320	1367
Lime	1367	1377
Red rock	1377	1387
Big Dunkard Sand	1387	1433
Slate	1433	1440
Shale	1440	1455
Lime	1455	1490
Gas Sand	1490	1515
Slate	1515	1526
First Salt Sand	1526	1585
Shale	1585	1595
Lime	1595	1620
Coal	1620	1622
Slate	1622	1627
Second Salt Sand (water, 1690-1700', 2 bbls. per hour)	1627	1710
Slate	1710	1728
Third Salt Sand	1728	1750
Slate	1750	1806
Lime	1806	1825
Salt Sand	1825	1850
Slate	1850	1910
Marble Sand <i>Salt</i>	1910	1929
Sand	1929	1950
Original total depth		1950
DEEPENED:		
Sand (gas, 1952-1954', 40/10 W. 8 1/2")	1950	1980
Shells, dark	1980	1985
Shells, hard	1985	1992
Pencil Cove	1992	1997
Lime, hard	1997	2012
Big Lime, hard (grit at 2033')	2012	2071
Big Injan Sand, hard	2071	2315
Slate, dark	2315	2350
Lime, light	2350	2365
Slate, dark	2365	2390
Lime, gritty	2390	2410
Slate, dark	2410	2440
Lime, gritty	2440	2490
Slate, dark	2490	2505
Lime, gritty	2505	2550
Slate, dark	2550	2580
Lime, hard	2580	2600
Slate, soft	2600	2630
Lime, shells	2630	2690
Slate, soft	2690	2730
Lime, medium	2730	2776
Pink rock	2776	2800
Slate, dark	2800	2811
Shall		

Permit No. Wet-153

Gas Well

Littleton Quad.

CASING & TUBING

Company Hope Natural Gas Co.
 Address Clarksburg, W.Va.
 Farm William Schaffer Acres 75
 Location Lynn Camp Run
 Well No. 7774 Elev. 1015
 District ~~Proctor~~ County Wetzel
 Surface Not given
 Mineral Not given
 Drilling Commenced April 22, 1937
 Completed May 27, 1937

10 1000 1000
 8 1/4 1735 1735
 3 1950 1950

PACKERS

Kind of Packer Wall & Anchor
 Size of 8 1/4 x 3"
 Depth set 1938

Formation Color ^{Hor} Top Bottom Result Formation Color ^{Hor} Top Bottom Result

Sandy		0	20		2nd Salt Snd		1728	1750	
Slate		20	45	Water	Line		1806	1825	
Sand		45	60	45	3rd. Salt Snd.		1825	1850	
Lime		60	65		Sand	Dark	1910	1929	
Slate		65	72		Sand	white	1929	1950	Gas
Red Rock		72	80		Salt				1939-
Slate		80	95						1949-
Red Rock		95	245		TOTAL DEPTH			1950	1950
Slate		245	290						
Lime		290	300						
Red Rock		300	328						
Slate		328	365						
Red Rock		365	390						
Slate		390	415						
Red Rock		415	435						
Slate		435	492						
Lime		560	569						
Sand		596	607						
Red Rock		607	614						
Lime		620	640						
Red Rock		650	656						
Sand		656	685						
Lime		706	762						
Lime		768	825						
Mapletown Coal		825	828						
Lime		826	860						
Pitts. Coal		915	919						
Slate		919	929						
Lime		955	974	Water					
Red Rock		974	982	965-975					
Lime		989	996						
Sand		1033	1094						
Red Rock		1100	1144						
Red Rock		1174	1236						
Little Dunk.		1273	1291						
Red Rock		1291	1320						
Lime		1367	1377						
Red Rock		1377	1387						
Big Dunkard		1387	1433						
Shale		1433	1440						
Lime		1455	1490						
Gas Sand		1490	1515						
Sand		1526	1585						
Lime		1595	1620						
Slate		1622	1627						
1st. Salt Snd.		1627	1710	Water					
Slate		1710	1728	1690-1700					