

# McDOUGAL LEASE 80 ACRES+ TOTAL EQUITRANS 5406 47-103-0124

*Smile*  
7/15/97

LATITUDE 39°35'00"

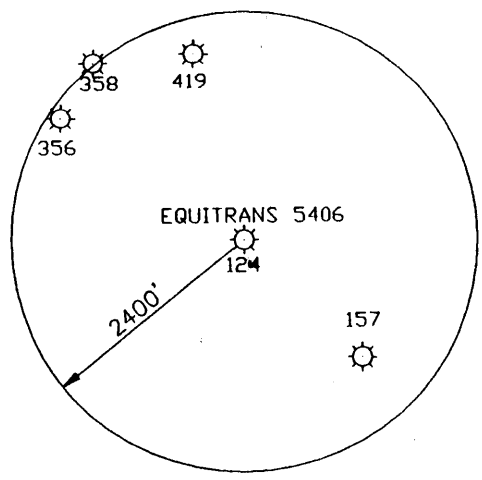
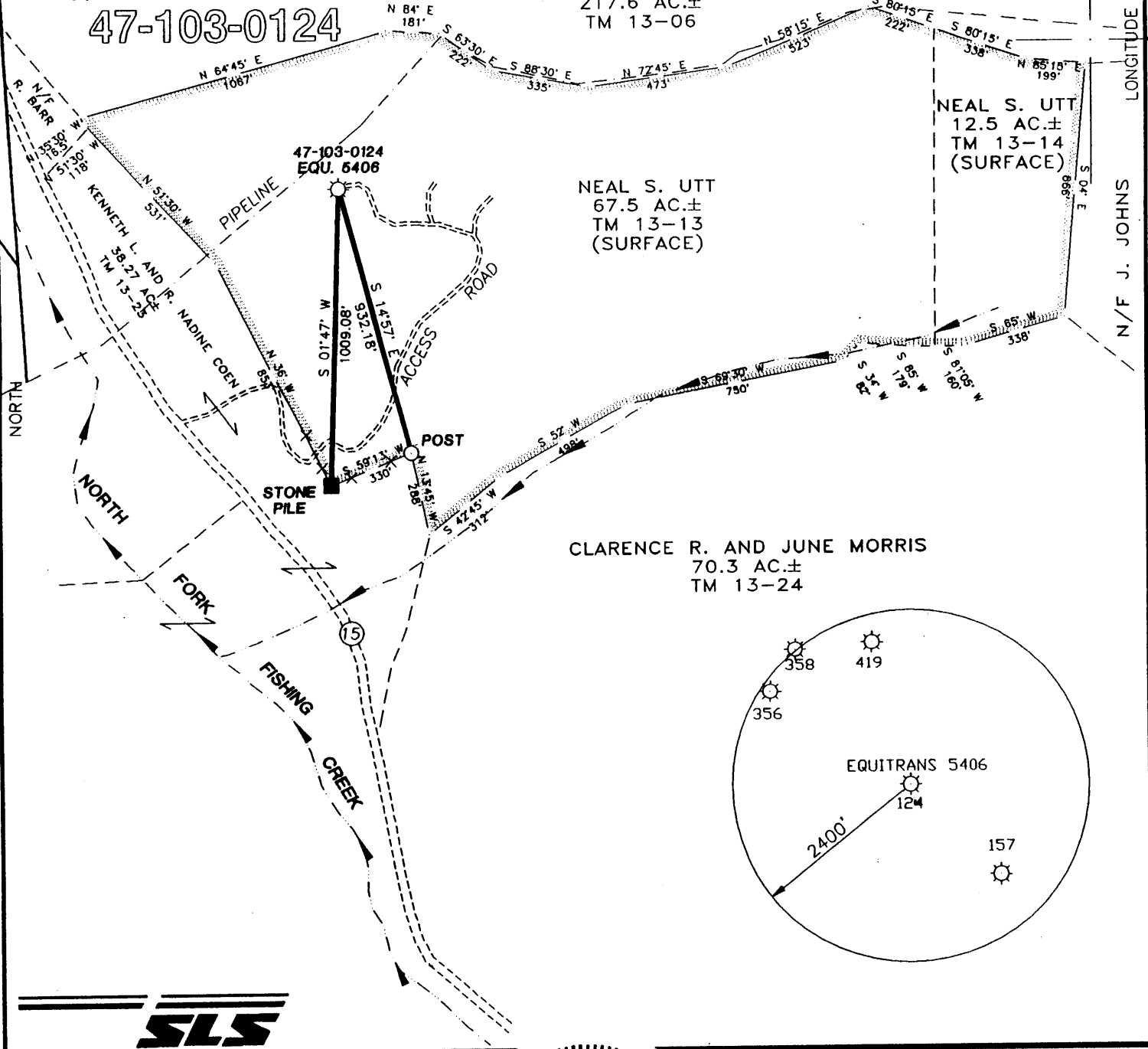
JOAN I. SCHAMP  
217.6 AC.±  
TM 13-06

0.465  
0.14

NEAL S. UTT  
12.5 AC.±  
TM 13-14  
(SURFACE)

NEAL S. UTT  
67.5 AC.±  
TM 13-13  
(SURFACE)

CLARENCE R. AND JUNE MORRIS  
70.3 AC.±  
TM 13-24



I THE UNDERSIGNED, HEREBY CERTIFY THAT THIS PLAT IS CORRECT TO THE BEST OF MY KNOWLEDGE AND BELIEF AND SHOWS ALL THE INFORMATION REQUIRED BY LAW AND THE REGULATIONS ISSUED AND PRESCRIBED BY THE DEPARTMENT OF ENERGY.



(+) DENOTES LOCATION OF WELL ON UNITED STATES TOPOGRAPHIC MAPS.

DATE JUNE 18, 19 97  
OPERATORS WELL NO. EQUITRANS 5406  
47-103-0124  
API WELL NO. 47-103-00124P  
STATE COUNTY PERMIT

MINIMUM DEGREE OF ACCURACY 1 / 200 FILE NO. 3737P1 (65-25)  
PROVEN SOURCE OF ELEVATION JUNCTION OF RADS ELEVATION 817' SCALE 1" = 500'

STATE OF WEST VIRGINIA  
DIVISION OF ENVIRONMENTAL PROTECTION  
OFFICE OF OIL AND GAS



WELL TYPE : OIL  GAS  LIQUID INJECTION  WASTE DISPOSAL  IF "GAS" PRODUCTION  STORAGE  DEEP  SHALLOW

LOCATION : ELEVATION 1196' WATERSHED NORTH FORK FISHING CREEK  
DISTRICT GRANT COUNTY WETZEL QUADRANGLE BIG RUN 7.5'

SURFACE OWNER NEAL S. UTT ACREAGE 67.5  
ROYALTY OWNER J.N. McDOUGAL ET AL LEASE ACREAGE 80  
PROPOSED WORK : LEASE NO. 21375

DRILL  CONVERT  DRILL DEEPER  REDRILL  FRACTURE OR STIMULATE  PLUG OFF OLD FORMATION  PERFORATE NEW FORMATION  PLUG AND ABANDON  CLEAN OUT AND REPLUG  OTHER

PHYSICAL CHANGE IN WELL (SPECIFY) Big layer beyond sands TARGET FORMATION 3260' ESTIMATED DEPTH 3260'

WELL OPERATOR EQUITRANS, L.P DESIGNATED AGENT WILLIAM HOSTUTLER  
ADDRESS 3500 PARK LANE PITTSBURGH, PA 15275 ADDRESS P.O. BOX 1550 CLARKSBURG, WV 26301

COUNTY NAME  
PERMIT

JUL 18 1997

LATITUDE

39 35

OGIS F0  
7.5' loc

8035

LONGITUDE

7.5 OGIS topo location

|          |              |         |              |
|----------|--------------|---------|--------------|
| 7.5' loc | <u>0.46S</u> | 15' loc | <u>0.46S</u> |
|          | <u>0.13W</u> | (calc.) | <u>0.13W</u> |

Company \_\_\_\_\_

Farm \_\_\_\_\_

Quad Big Run Littleton

County \_\_\_\_\_

District Grant

WELL LOCATION MAP

File No. Wet. 124

WEST VIRGINIA DEPARTMENT OF MINES  
OIL & GAS DIVISION  
W E L L R E C O R D

Permit No. Wet 124 D  
Littleton S.E. Quad.  
Company  
Address  
Farm  
Location  
Well No.  
District  
Surface  
Mineral  
Commenced  
Completed  
Open flow  
Volume  
Rock Pressure

Gas Well  
CASING & TUBING

Pittsburgh & W.Va. Gas Company  
Clarksburg, W.Va.  
J.N. McDougal Acres 80  
Littleton S/E 1-4  
5406 Elev. 1198 L  
Grant Wetzell County  
Wesley D. Brewer, Big Run, W.Va.  
J.N. McDougal, Mannington, W.Va.  
July 11, 1945  
July 26, 1945  
62/10ths W 1 1/2"  
163,500 C F,  
125 lbs. 9 hrs.

DRILLED DEEPER

Began drilling deeper at 2250'

|                |    |   |      |      |                                |
|----------------|----|---|------|------|--------------------------------|
| Big Injun      | Wh | H | 2139 | 2375 |                                |
| Slate          | Wh | S | 2375 | 2420 |                                |
| Lime Shells    | Wh | H | 2420 | 2445 |                                |
| Slate          | Dk | S | 2445 | 2505 |                                |
| Lime Shells    | Wh | H | 2505 | 2560 |                                |
| Slate          | Wh | S | 2560 | 2600 |                                |
| Slate          | Wh | H | 2600 | 2660 |                                |
| Lime Shells    | Wh | H | 2660 | 2680 |                                |
| Slate          | Wh | S | 2680 | 2755 |                                |
| Lime Shells    | Wh | H | 2755 | 2800 |                                |
| Pink Rock      |    | S | 2800 | 2810 |                                |
| Slate          | Wh | S | 2810 | 2830 |                                |
| Lime Shells    | Wh | H | 2830 | 2880 |                                |
| Slate          | Wh | S | 2880 | 2900 |                                |
| Lime Shells    | Wh | H | 2900 | 2909 | Gas 2909 100/10 W 1/2" Opng.   |
| Red Rock       |    | S | 2909 | 2917 |                                |
| Gordon Stray   |    | H | 2917 | 2954 |                                |
| Slate          | Wh | S | 2954 | 3000 |                                |
| Shells         | Wh | H | 3000 | 3060 |                                |
| Shells         | Wh | S | 3060 | 3100 |                                |
| Slate & Shells | Wh | S | 3100 | 3244 |                                |
| Byard Sand     | Dk | H | 3244 | 3249 | Gas 3245' 150/10 W 1 1/2 Opng. |
| Slate          | Dk | S | 3249 | 3262 |                                |
| TOTAL DEPTH    |    |   |      | 3262 |                                |

3242  
7230  
1012

Grant District, Wetzel County, W. Va.  
 By Pittsburgh & W. Va. Gas Co., Clarksburg, W. Va.  
 On 80 acres, (Map Loc., Littleton S.E.14); surface owned by  
 Wesley D. Brewer, Big Run, W. Va., and mineral rights by  
 J. N. McDougal, Mannington, W. Va.

Drilled under permit Wat-124, issued June 16, 1936.

Elevation, 1198' L.

1 3/4" conductor, 16'; 10" casing, 320'; 8 1/2", 1310'; 6-5/8", 2084'.

Coal was encountered at 533-536, 796-799, and 880-886'.

Completion reported to Dept. of Mines Oct. 21, 1936.

Located 5-22-1936; began drg. 8-12-1936; comp. drg. 9-25-1936.

Fresh water at 185 and 220'; salt water at 1705' and 1775-1780'.

Well was not shot. 6-5/8" hole.

Gas well; 53/10 water in 2" opening.

|  | Top. | Bottom. | Thickness. |
|--|------|---------|------------|
| Clay, yellow, soft   | 0    | 20      | 20         |
| Slate, gray, soft  | 20   | 70      | 50         |
| Red rock, soft   | 70   | 80      | 10         |
| Lime, dark, medium   | 80   | 110     | 30         |
| Slate, dark, soft  | 110  | 130     | 20         |
| Lime, gray, dark   | 130  | 145     | 15         |
| Shale, brown, soft   | 145  | 155     | 10         |
| Slate, dark, soft  | 155  | 157     | 2          |
| Slate, light, soft (water at 185'; 1/2<br>bailer per hour) | 157  | 200     | 43         |
| Lime, gray, hard (water, 220'; 2 bailers<br>per hour)      | 200  | 270     | 70         |
| Slate, light, soft   | 270  | 320     | 50         |
| Lime, gray, hard   | 320  | 345     | 25         |
| Sand, white, hard  | 325  | 365     | 40         |
| Lime and shells, hard                                      | 365  | 390     | 25         |
| Lime, gray, hard   | 390  | 405     | 15         |
| Lime, gray, medium   | 405  | 477     | 72         |
| Slate, dark, soft  | 477  | 479     | 2          |
| Lime and shells, gray, hard                                | 479  | 500     | 21         |
| Sand, white, medium  | 500  | 533     | 33         |
| Coal, black, soft  | 533  | 536     | 3          |
| Gritty lime, white, hard                                   | 536  | 564     | 28         |
| Slate and shells, dark, soft                               | 564  | 580     | 16         |
| Red rock, soft   | 580  | 585     | 5          |
| Lime, gray, hard   | 585  | 600     | 15         |
| Slate and shells, dark, hard and soft                      | 600  | 630     | 30         |
| Lime, gray, hard   | 630  | 796     | 166        |
| Mapletown (Sewickley) Coal, black, soft                    | 796  | 799     | 3          |
| Lime, dark, hard   | 799  | 880     | 81         |
| Pittsburgh Coal, black, soft                               | 880  | 886     | 6          |
| Lime, gray, medium   | 886  | 960     | 74         |
| Red rock, soft   | 960  | 975     | 15         |
| Lime, dark, hard   | 975  | 995     | 20         |
| Slate and shells, dark, hard and soft                      | 995  | 1020    | 25         |
| Lime, dark, hard   | 1020 | 1047    | 27         |
| Shale, pink, medium  | 1047 | 1060    | 13         |
| Lime, white, hard  | 1060 | 1085    | 25         |
| Slate, brown, soft   | 1085 | 1090    | 5          |
| Red rock, soft   | 1090 | 1110    | 20         |

(OVER)

J. N. McDOUGAL NO. 5406 WELL. (Continued).

|   | Top. | Bottom. | Thickness. |
|---|------|---------|------------|
| Lime, gray, hard  | 1110 | - 1140  | 30         |
| Slate and shells, dark, hard and soft   | 1140 | - 1185  | 45         |
| Lime, dark, hard  | 1185 | - 1241  | 56         |
| Slate and shells, black, soft   | 1241 | - 1348  | 107        |
| ✓ Big Dunkard Sand, dark, medium  | 1348 | - 1360  | 12         |
| Slate and shells, dark, hard and soft   | 1360 | - 1400  | 40         |
| Lime, white, hard   | 1400 | - 1470  | 70         |
| Slate and shell, dark, hard and soft  | 1470 | - 1475  | 5          |
| ✓ Gas Sand, white, medium   | 1475 | - 1595  | 120        |
| Slate and shell, dark, hard and soft  | 1595 | - 1635  | 40         |
| ✓ 1st Salt Sand, white, hard (gas at<br>1647-55'; 20/10 water in 2" opg.)                       | 1635 | - 1675  | 40         |
| Slate and lime, dark, hard and soft   | 1675 | - 1693  | 18         |
| ✓ 2nd Salt Sand, dark, medium (4 bailers<br>water per hour at 1705')                            | 1693 | - 1731  | 38         |
| Slate and shells, dark, soft and hard   | 1731 | - 1770  | 39         |
| ✓ 3rd Salt Sand, gray, hard (gas, 1770-<br>1772'; 6/10 water in 8½" opg.;<br>water, 1775-1780') | 1770 | - 1905  | 135        |
| Slate and shells, dark, soft and hard   | 1905 | - 1997  | 92         |
| Red rock, soft  | 1997 | - 2005  | 8          |
| Sand-Shells, gray, hard   | 2005 | - 2035  | 30         |
| Slate, gray, soft   | 2035 | - 2045  | 10         |
| ✓ Little Lime, gray, hard   | 2045 | - 2067  | 22         |
| ✓ Pencil Cave, dark, soft   | 2067 | - 2072  | 5          |
| ✓ Big Lime, white, hard   | 2072 | - 2139  | 67         |
| ✓ Big Infun Sand, white, hard (show gas,<br>2191'; gas, 2240-2244')                             | 2139 |         | 111        |
| Total depth   |      | 2250    |            |