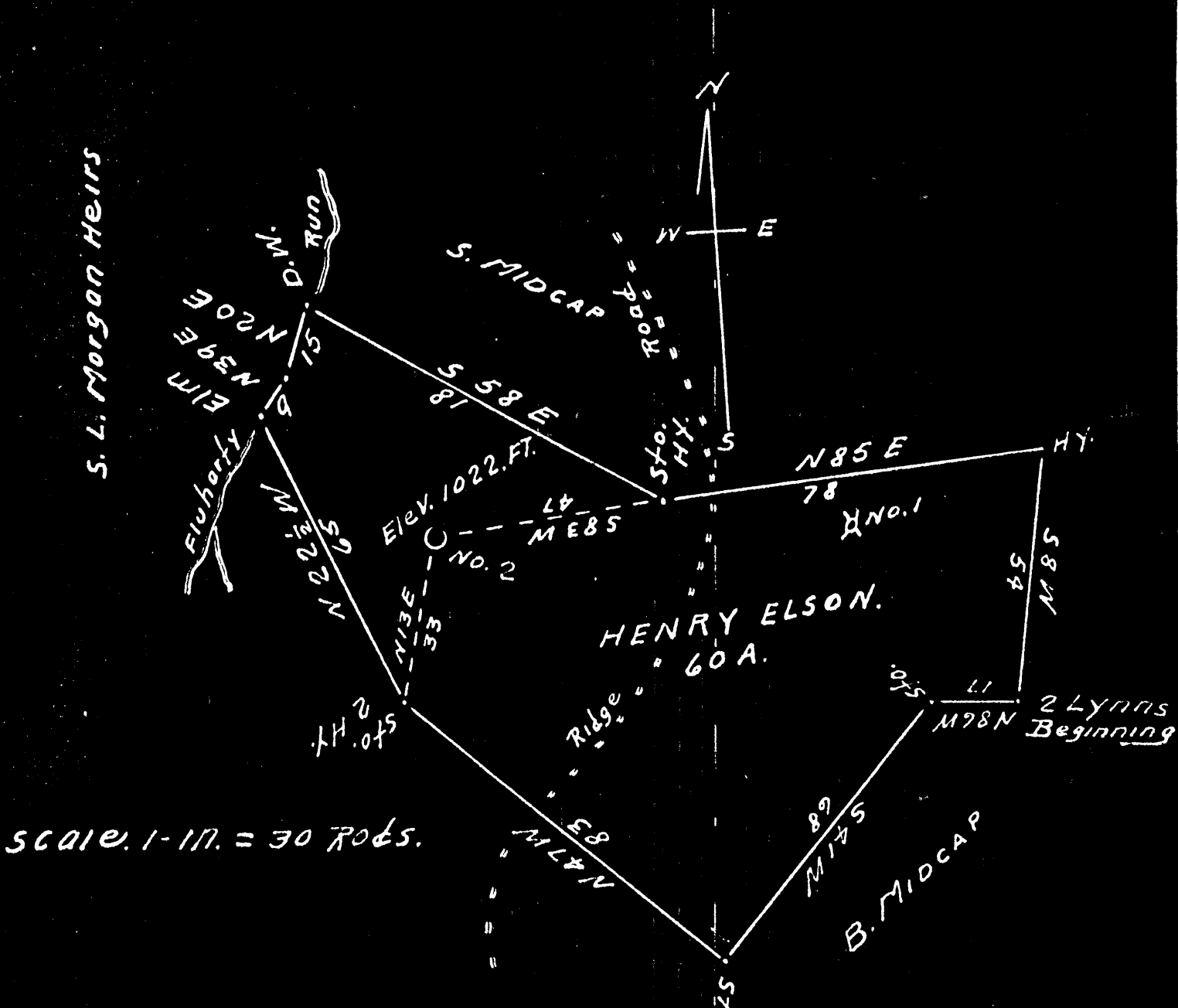


Plat of the proposed location of well No. 2.
of S. J. Midcap of Porters Falls West Virginia, on
the Hurry Elson farm, consisting of 60 acres
located in Green District Hazel Co. West Va.



SCALE 1" = 30 RODS.

I the undersigned hereby certify that this map
is correct and shows all the information
to the best of my knowledge and belief
required by the oil and gas section
of the Mining Laws of West Virginia.

Surveyor for
Hazel Co. West Virginia
Acknowledged before me a Notary Public this
day of November 1935.
Notary Public
for Hazel Co. West Virginia.
My Commission expires

LATITUDE

3935

8045

LONGITUDE

7.5' loc
24 7/2/91

7.5 OGIS topo location

7.5' loc 3935
8045

15' loc 3935
(calc.) 8045

Company _____

Farm _____

LOCATION MAP

Quad Porters Falls No. 10

County _____

District Green

WELL LOCATION MAP

File No. Wet 109

sa. farm as Wet. 210

Green District, Watauga County, N. Va.

By G. T. Midcap et al., New Martinsville, W. Va., Route 2.

On 66 acres, on Chisalfinger Ridges surface and minerals owned by

Henry Elson, Route 2, New Martinsville, W. Va.

Drilled under permit Wet-103, issued Dec. 6, 1935.

Elevation, 1022' B.

10" conductor, 14"; 8 1/2" casing, 185'; 6", 1190'; 5", 2010'.

Hook wall packer, 5" x 6", set at 2010'.

No liners used.

Completion reported to Dept. of Mines Apr. 13-14, 1936.

Well was not shot. One well.

Record to NCF from Mrs. Griffith Sept. 2, 1938.

	Top.	Bottom.	Thickness.
Clay, yellow, soft	0	15	15
Shale, white, soft	15	30	15
Shale, dark, soft	30	50	20
Lime, white, hard	50	60	10
Shale, dark, soft	60	85	25
Shale, light, soft	85	100	15
Sand, light, hard	100	115	15
Shale, light, soft	115	145	30
Shale, dark, soft	145	170	25
Lime, white, hard	170	190	20
Shale, light, soft	190	220	30
Sand, light, hard	220	235	15
Shale, dark, soft	235	250	15
Shale, light, soft	250	270	20
Lime, white, hard	270	285	15
Shale, dark, soft	285	315	30
Sand, light, hard	315	330	15
Shale, light, soft	330	355	25
Shale, dark, soft	355	370	15
Shale, light, soft	370	390	20
Lime, white, hard	390	420	30
Shale, light, soft	420	430	10
Lime, white, hard	430	445	15
Shale, dark, soft	445	460	15
Sand, light, hard	460	488	28
Lime, white, hard	488	510	22
✓Waynesburg Coal, black, soft	510	516	6
Shale, dark, soft	516	540	24
Sand, light, hard	540	560	20
Lime, white, hard	560	588	28
Shale, dark, soft	588	620	32
Shale, white, soft	620	670	50
Sand, light, hard	670	690	20
Lime, light, hard	690	740	50
Red rock, soft	740	760	20
Shale, dark, soft	760	790	30
Sand, light, hard	790	820	30
Shale, light, soft	820	850	30
Lime, light, hard	850	870	20
Shale, light, soft	870	900	30
Red rock, soft	900	935	35
Shale, dark, soft	935	960	25
Red rock, soft	960	1000	40

(OVER)

KERRY NELSON NO. 2 WELL (Continued).

	Top.	Bottom.	Thickness.
Slate, dark, soft	1000	- 1075	75
Sand, light, hard	1075	- 1095	20
Shale, dark, soft	1095	- 1120	25
Sand, light, hard	1120	- 1140	20
Red rock, soft	1140	- 1190	50
Lime, light, hard	1190	- 1210	20
Shale, dark, soft	1210	- 1240	30
Shale, light, soft	1240	- 1250	10
Shale, dark, soft	1250	- 1265	15
Sand, light, hard	1265	- 1270	5
Slate and shells, light	1270	- 1365	95
Sand, light, hard	1365	- 1395	30
✓ Salt Sand, light, hard	1395	- 1735	340
Salt Sand, light, soft (salt water)	1735	- 1738	3
Salt Sand, light, hard	1738	- 1755	17
Salt Sand, light, hard	1755	- 1785	30
Slate and shells	1785	- 1892	107
✓ Maxton Sand, light, hard	1892	- 1900	8
✓ Lime, light, hard	1900	- 1915	15
✓ Pencil Cove, dark, soft	1915	- 1920	5
✓ Big Lime, light, hard	1920	- 1989	69
✓ Keener Sand, gray, hard	1989	- 2000	11
✓ Big Injun Sand, gray, hard	2000	- 2080	80
✓ Big Injun Sand, gray, soft (gas, 2080-2083')	2080	- 2083	3
Total depth		2083	