

38° 17' 30"

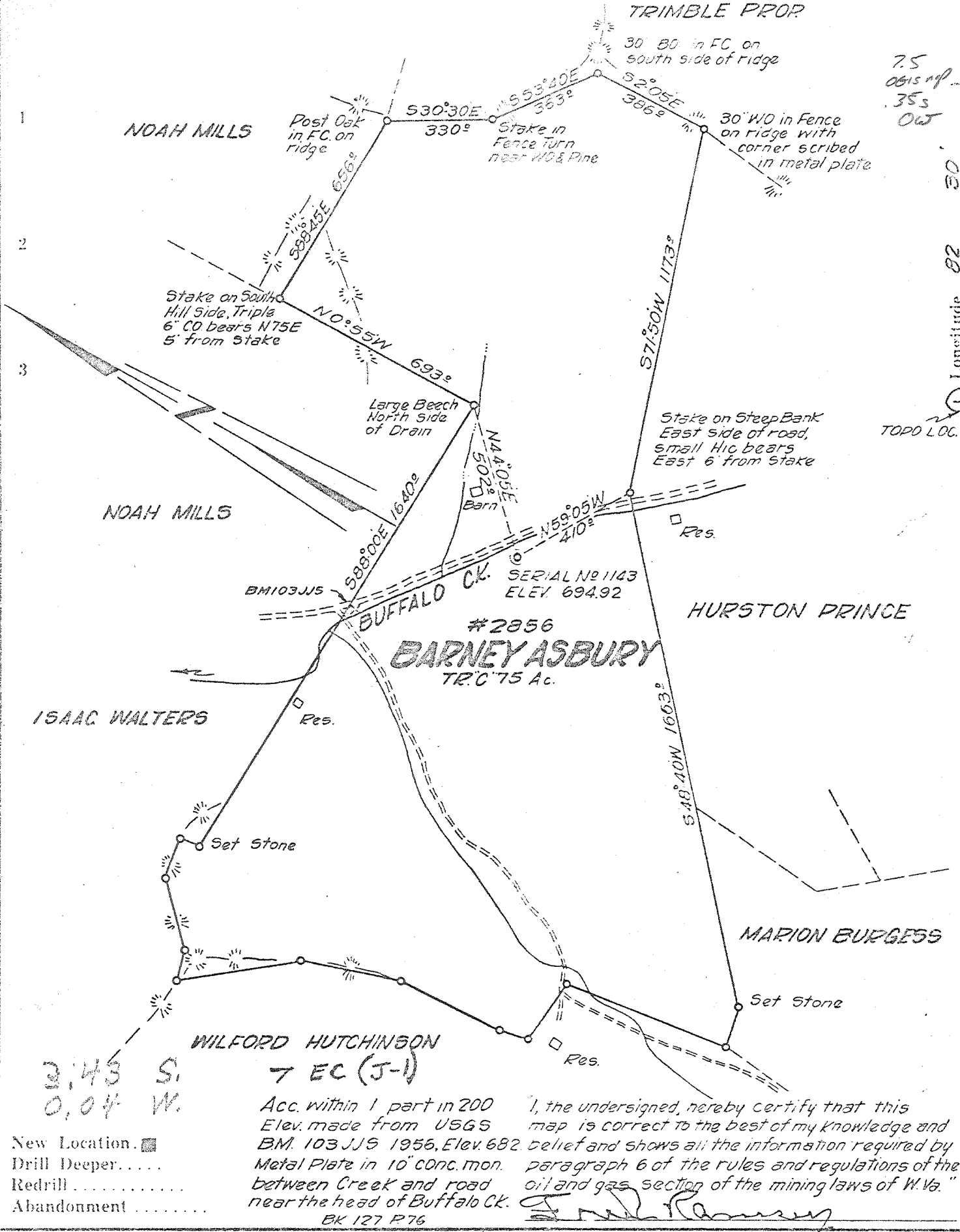
Latitude 38 20

TRIMBLE PROP.

7.5  
0615 up  
35s  
OW

Longitude 82

TOPO LOC.



3.43 S.  
0.04 W.

WILFORD HUTCHINSON  
7 EC (J-1)

Acc. within 1 part in 200  
Elev. made from USGS  
BM. 103 JJS 1956, Elev. 682  
Metal Plate in 10" conc. mon.  
between Creek and road  
near the head of Buffalo Ck.  
BK 127 P 76

I, the undersigned, hereby certify that this map is correct to the best of my knowledge and belief and shows all the information required by paragraph 6 of the rules and regulations of the oil and gas section of the mining laws of W. Va.  
*Fred Ramsey*

- New Location. ■
- Drill Deeper. ....
- Redrill. ....
- Abandonment. ....

Company **OWENS, LIBBEY OWENS GAS DEPT.**  
 Address **BOX 4168 CHARLESTON, W. VA.**  
 Farm **BARNEY ASBURY**  
 Tract "C" Acres **75** Lease No. **2856**  
 Well (Farm) No. **1** Serial No. **1143**  
 Elevation (Spirit Level) **694.92**  
 Quadrangle **CEREDO - SE**  
 County **WAYNE** District **CEREDO**  
 Engineer *Fred Ramsey*  
 Engineer's Registration No. **1540**  
 File No. Drawing No.  
 Date **APRIL 8, 1963** Scale **1" = 400 FT.**

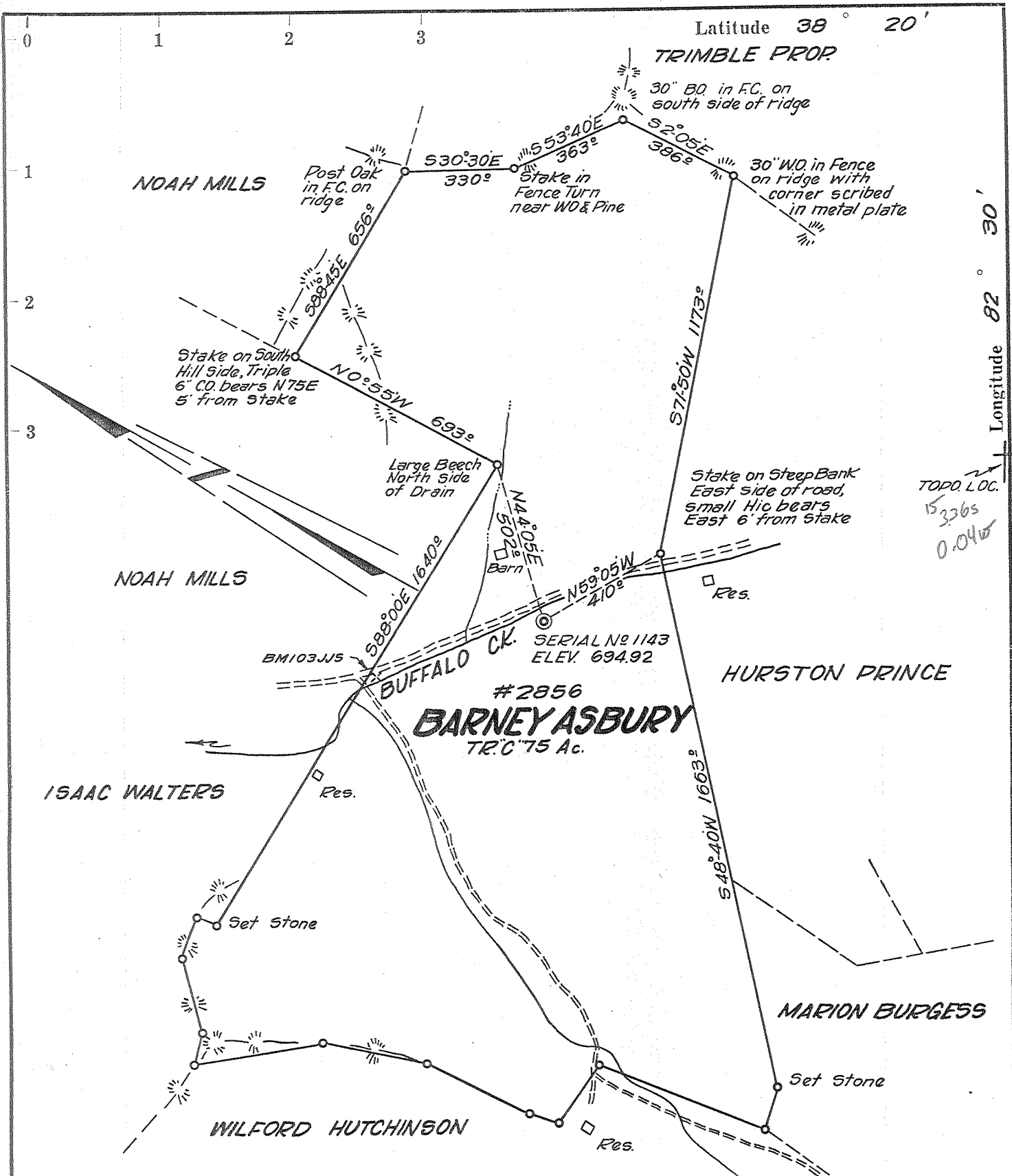
STATE OF WEST VIRGINIA  
 DEPARTMENT OF MINES  
 OIL AND GAS DIVISION  
 CHARLESTON

WELL LOCATION MAP  
 FILE NO. **WAY-1454**

**CORRECTED PERMIT NUMBER**  
 Denotes location of well on United States Topographic Maps, scale 1 to 62,500, latitude and longitude lines being represented by border lines as shown.  
 --- Denotes one inch spaces on border line of original tracing.

No Samples

Deep Well



#2856  
**BARNEY ASBURY**  
 TR. C 75 Ac.

Acc. within 1 part in 200  
 Elev. made from USGS  
 BM. 103 JJS 1956, Elev. 682.  
 Metal Plate in 10" conc. mon.  
 between Creek and road  
 near the head of Buffalo Ck.  
 BK. 127 P. 76

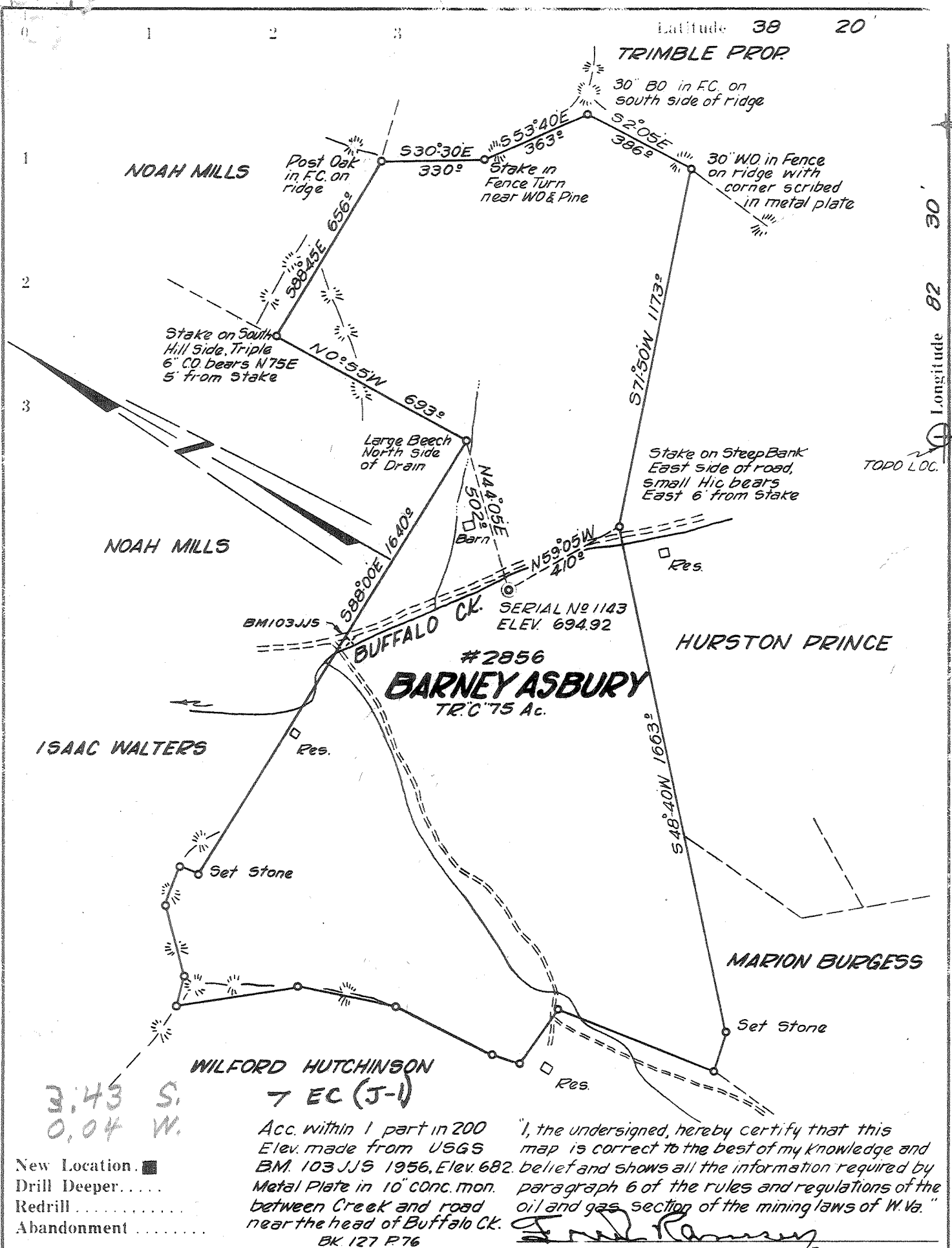
"I, the undersigned, hereby certify that this map is correct to the best of my knowledge and belief and shows all the information required by paragraph 6 of the rules and regulations of the oil and gas section of the mining laws of W. Va."  
*Fred Ramsey*

- New Location.
- Drill Deeper.
- Redrill.
- Abandonment.

Company	OWENS, LIBBEY-OWENS GAS DEPT.
Address	BOX 4168 CHARLESTON, W. VA.
Farm	<b>BARNEY ASBURY</b>
Tract "C"	Acres 75 Lease No. 2856
Well (Farm) No.	1 Serial No. 1143
Elevation (Spirit Level)	694.92
Quadrangle	CEREDO SE
County	WAYNE District CEREDO
Engineer	<i>Fred Ramsey</i>
Engineer's Registration No.	1540
File No.	Drawing No.
Date	APRIL 8, 1963 Scale 1" = 400 FT.

STATE OF WEST VIRGINIA  
 DEPARTMENT OF MINES  
 OIL AND GAS DIVISION  
 CHARLESTON

**WELL LOCATION MAP**  
 FILE NO. WAY-1454  
 CORRECTED PERMIT NUMBER  
 + Denotes location of well on United States Topographic Maps, scale 1 to 62,500, latitude and longitude lines being represented by border lines as shown.  
 — Denotes one inch spaces on border line of original tracing.



3.43 S.  
0.04 W.

- New Location. ■
- Drill Deeper. ....
- Redrill. ....
- Abandonment. ....

Acc. within 1 part in 200  
Elev. made from USGS  
BM. 103 JJS 1956, Elev. 682.  
Metal Plate in 10" conc. mon.  
between Creek and road  
near the head of Buffalo Ck.  
BK 127 P76

"I, the undersigned, hereby certify that this map is correct to the best of my knowledge and belief and shows all the information required by paragraph 6 of the rules and regulations of the oil and gas section of the mining laws of W. Va."  
*Fred Ramsey*

Company **OWENS, LIBBEY OWENS GAS DEPT.**  
 Address **BOX 4168 CHARLESTON, W. VA.**  
 Farm **BARNEY ASBURY**  
 Tract "C" Acres **75** Lease No. **2856**  
 Well (Farm) No. **1** Serial No. **1143**  
 Elevation (Spirit Level) **694.92**  
 Quadrangle **CEREDO - SE**  
 County **WAYNE** District **CEREDO**  
 Engineer *Fred Ramsey*  
 Engineer's Registration No. **1540**  
 File No. \_\_\_\_\_ Drawing No. \_\_\_\_\_  
 Date **APRIL 8, 1963** Scale **1" = 400 FT.**

STATE OF WEST VIRGINIA  
 DEPARTMENT OF MINES  
 OIL AND GAS DIVISION  
 CHARLESTON

**WELL LOCATION MAP**  
 FILE NO. **WAY-1454**  
 CORRECTED PERMIT NUMBER

Denotes location of well on United States Topographic Maps, scale 1 to 62,500, latitude and longitude lines being represented by border lines as shown.

— Denotes one inch spaces on border line of original tracing.

No Samples 6-6-279 Deep Well



STATE OF WEST VIRGINIA  
DEPARTMENT OF MINES  
OIL AND GAS DIVISION 31

Quadrangle Ceredo

**WELL RECORD**

Permit No. Way-1454

Oil or Gas Well GAS  
(KIND)

Company OWENS, LIBBEY-OWENS GAS DEPARTMENT  
Address P. O. BOX 4168, Charleston 4, W. Va.  
Farm Barney Asbury "C" Acres 100  
Location (waters) \_\_\_\_\_  
Well No. 1 (Serial No. 1143) Elev. 694.92  
District Ceredo County Wayne  
The surface of tract is owned in fee by \_\_\_\_\_  
Address \_\_\_\_\_  
Mineral rights are owned by Mr. Barney Asbury  
Address Wayne, W. Va.

Casing and Tubing	Used in Drilling	Left in Well	Packers
Size			Kind of Packer
16			
13			
10 - 3/4"	311'1"	311'1"	Size of
8 5/8"	1278'	Pulled	
8-5/8"	1286'2"	1286'2"	Depth set
7"	2095'11"	Pulled	
7"	2109'2"	2109'2"	Perf. top
5-1/2"	3687'4"	3687'4"	Perf. bottom
Liners Used			Perf. top
			Perf. bottom

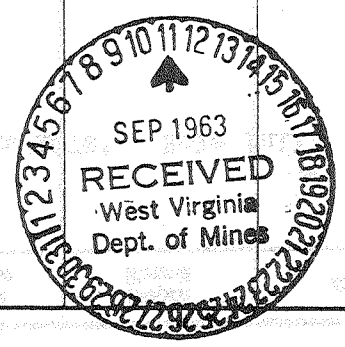
Drilling commenced April 22, 1963  
Drilling completed July 23, 1963  
Date Shot 8-1-63 From 3747 To 3810  
With 400# Trojan Powder  
Open Flow /10ths Water in \_\_\_\_\_ Inch  
/10ths Merc. in \_\_\_\_\_ Inch  
Volume \_\_\_\_\_ Cu. Ft.  
Rock Pressure \_\_\_\_\_ lbs. \_\_\_\_\_ hrs.  
Oil \_\_\_\_\_ bbls., 1st 24 hrs.  
WELL ACIDIZED Dowell acidized Big Six Sand  
with 2,000 gals. intensified acid & 93 bbls.  
water to flush acid.  
WELL FRACTURED

CASING CEMENTED 5-1/2" SIZE 492 No. Ft. 7-3-63 Date  
Halliburton cemented 5-1/2" csg. with 30 bags  
Marquette cement.  
COAL WAS ENCOUNTERED AT 200 FEET 48 INCHES  
\_\_\_\_\_ FEET \_\_\_\_\_ INCHES \_\_\_\_\_ FEET \_\_\_\_\_ INCHES  
\_\_\_\_\_ FEET \_\_\_\_\_ INCHES \_\_\_\_\_ FEET \_\_\_\_\_ INCHES

RESULT AFTER TREATMENT 134 MCF Big Six Sand  
ROCK PRESSURE AFTER TREATMENT 1050 lbs. in 48 hrs.  
Fresh Water 25 Feet 400-450 Salt Water 1070', 1590' Feet

Formation	Color	Hard or Soft	Top	Bottom	Oil, Gas or Water	Depth	Remarks
Surface	Red	Soft	0	12			
Slate	Dark	Soft	12	112	Water at 25'	2 BPH	
Red Rock	Red	Med.	112	137			
Slate	Grey	Med.	137	140			
Red Rock	Red	Med.	140	160			
Slate	Dark	Med.	160	200			
Coal	Black	Soft	200	204			
Broken Sand	Grey	Med.	204	244			
Slate	Grey	Med.	244	315			
Broken Sand	Grey	Med.	315	357			
Slate	Grey	Soft	357	372			
Sand	Light	Soft	372	460	Water at 400-450'	1 BPH	
Slate	Light	Med.	460	470			
Sand	Light	Med.	470	490			
Slate	Dark	Med.	490	522			
Sand	Light	Med.	522	609			
Slate	Dark	Med.	609	648			
Slate	Dark	Soft	648	668			
Sand	Dark	Med.	668	718			
Slate	Dark	Med.	718	864			
Broken Sand	Light	Med.	864	872			
Slate	Dark	Med.	872	899			
Sand	Light	Med.	899	919			
Slate	Light	Med.	919	959			
Sand	Light	Med.	959	973			
Slate	Dark	Med.	973	997			
Sand	Light	Med.	997	1007			

4-25-63  
SLM 310 - Sand LM 310  
Installed 10-3/4" casing on a shoe at  
310'.



(over)

*Deep Well*

Formation	Color	Hard or Soft	Top <i>31</i>	Bottom	Oil, Gas or Water	Depth Found	Remarks
Slate	Dark	Med.	1007	1053			
Sand	Light	Hard	1053	1068			
Water Sand	Light	Med.	1068	1083	Water at 1070' - Hole full		
Settling Sand	Light	Med.	1083	1117			
Sand	Light	Hard	1117	1133			
Slate	Dark	Soft	1133	1151			
Sand	Light	Hard	1151	1178			
Slate	Dark	Med.	1178	1182			
Slate	Dark	Soft	1182	1188			
Sand	Dark	Hard	1188	1198			
Slate	Dark	Med.	1198	1231			
Little Lime	Dark	Hard	1231	1238			
Slate	Dark	Hard	1238	1248			
Little Lime	Dark	Hard	1248	1260			
Slate	White	Soft	1260	1262			
Big Lime	White	Hard	1262	1298	5-11-63 Re-installed 8-5/8" casing at 1288' on a shoe.		
Big Lime	White	Hard	1298	1415			
Injun Sand	Grey	Med.	1415	1614	Water at 1590' 1-1/2 BPH		
Sand	Grey	Hard	1614	1639			
Sl & Shls	Dark	Med.	1639	1663			
Slate	Grey	Med.	1663	1706			
Sl & Shls	Dark	Med.	1706	1738			
Slate	Grey	Med.	1738	1776			
Sl & Shls	Dark	Med.	1776	2007			
Shell	Dark	Hard	2007	2025			
Slate	Dark	Med.	2025	2041			
Coffee Shale	Dark	Soft	2041	2073			
Berea Sand	Grey	Hard	2073	2091	Gas at 2083' 20.7 M		
Slate	Dark	Med.	2091	2095			
Shell	Black	Hard	2095	2106			
Slate	Dark	Med.	2106	2109			
Shell	Dark	Med.	2109	2115	5-28-63 Re-installed 7" casing at 2110' on a shoe.		
Sl & Shls	Dark	Med.	2115	2148			
Shell	Dark	Med.	2148	2153			
Br. Shale	Brown	Med.	2153	2277			
Slate	White	Med.	2277	2379			
Br. Shale	Brown	Med.	2379	2860			
Slate	White	Med.	2860	3068	Gas 2874' 300 cu.ft.		
Br. Shale	Brown	Med.	3068	3089			
Br. Shale	Brown	Med.	3089	3100			
Corn. Lime	Dark	Hard	3100	3306	Show of black water 3250-3272' 1/2 BPH Gas 3272' 490 cu.ft.		
Corn. Lime	Dark	Hard	3306	3546			
Corn. Lime	Dark	Hard	3546	3692	7-3-63 Installed 5-1/2" casing at 3692' on a shoe with 3 centralizers. Halliburton cemented in the 5-1/2" csg. from 3200-3692' with 30 bags Marquette cement.		
Corn. Lime	Dark	Hard	3692	3698			
Corn. Lime	Dark	Hard	3698	3747			
Big Six	Grey	Hard	3747	3777	Gas 3750' 8.6 MCF Gas 3753' 9.6 MCF Gas 3755' 11.4 MCF Gas 3757' 12.2 MCF		
Big Six Sand	Grey	Hard	3777	3810			
Slate	Grey	Soft	3810	3813			
Red Rock	Red	Med.	3813	3832	2 Min. test 3832' 11.0 MCF		
			Total Depth 3832'		Filled with rock to 3814' SIM 3814' Cement (1 sack) dumped on rock		

3100  
695  
2405

418

Date September 6, 1963

APPROVED OWENS, LIBBEY-OWENS GAS DEPARTMENT, Own

By *A. H. Smith*  
A. H. Smith, Mgr. (Title Land, Engrg. &



STATE OF WEST VIRGINIA  
DEPARTMENT OF MINES  
OIL AND GAS DIVISION 31A

Quadrangle Ceredo

Permit No. Way-1454

WELL RECORD  
(PAGE TWO)

Oil or Gas Well GAS  
(KIND)

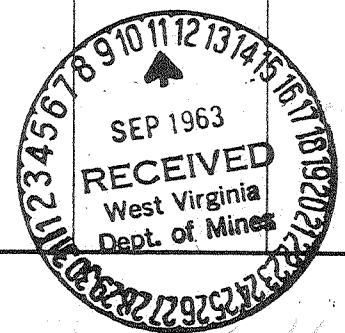
Company OWENS, LIBBEY-OWENS GAS DEPARTMENT  
Address P. O. Box 4168, Charleston 4, W. Va.  
Farm Barney Asbury "C" Acres 100  
Location (waters) \_\_\_\_\_  
Well No. 1 (Serial No. 1143) Elev. 694.92  
District \_\_\_\_\_ County \_\_\_\_\_  
The surface of tract is owned in fee by \_\_\_\_\_  
Address \_\_\_\_\_  
Mineral rights are owned by \_\_\_\_\_  
Address \_\_\_\_\_  
Drilling commenced \_\_\_\_\_  
Drilling completed \_\_\_\_\_  
Date Shot \_\_\_\_\_ From \_\_\_\_\_ To \_\_\_\_\_  
With \_\_\_\_\_  
Open Flow /10ths Water in \_\_\_\_\_ Inch  
/10ths Merc. in \_\_\_\_\_ Inch  
Volume \_\_\_\_\_ Cu. Ft.  
Rock Pressure \_\_\_\_\_ lbs. \_\_\_\_\_ hrs.  
Oil \_\_\_\_\_ bbls., 1st 24 hrs.  
WELL ACIDIZED \_\_\_\_\_  
WELL FRACTURED \_\_\_\_\_

Casing and Tubing	Used in Drilling	Left in Well	Packers
Size			
16			Kind of Packer _____
13			
10			Size of _____
8 1/4			
6 3/4			Depth set _____
5 3/16			
3			Perf. top _____
2			Perf. bottom _____
Liners Used			Perf. top _____
			Perf. bottom _____

CASING CEMENTED \_\_\_\_\_ SIZE \_\_\_\_\_ No. Ft. \_\_\_\_\_ Date \_\_\_\_\_  
COAL WAS ENCOUNTERED AT \_\_\_\_\_ FEET \_\_\_\_\_ INCHES  
\_\_\_\_\_ FEET \_\_\_\_\_ INCHES FEET \_\_\_\_\_ INCHES  
\_\_\_\_\_ FEET \_\_\_\_\_ INCHES FEET \_\_\_\_\_ INCHES

RESULT AFTER TREATMENT \_\_\_\_\_  
ROCK PRESSURE AFTER TREATMENT \_\_\_\_\_  
Fresh Water \_\_\_\_\_ Feet \_\_\_\_\_ Salt Water \_\_\_\_\_ Feet \_\_\_\_\_

Formation	Color	Hard or Soft	Top	Bottom	Oil, Gas or Water	Depth	Remarks
					8-1-63 Test before shot: 14 MCF T.D. before shot - 3805' King Torpedo Co. shot the Big Six Sand from 3743' to 3805' with 400# Trojan Powder. Test 15 Min. A.S. 133 MCF Test 8 Hrs. A.S. 38.3 MCF 8-7-63 Test 9:45 A.M. 33.2 MCF Dowell acidized the Big Six Sand with 2,000 gals. intensified acid. Used 93 bbls. water to flush acid. 8-14-63 Test 6:50 P.M. 150 MCF		



*Doug Well*